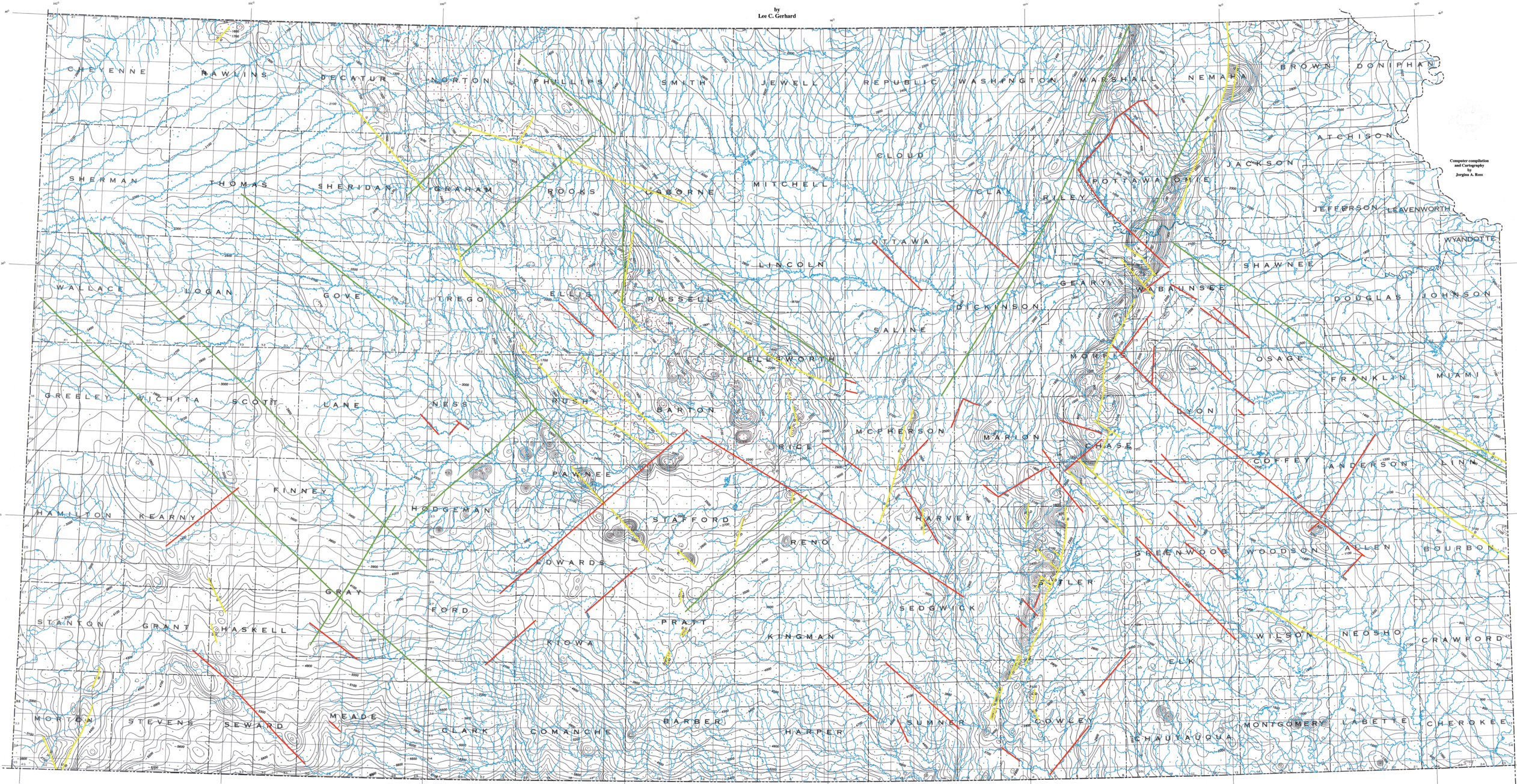


PRELIMINARY LINEAMENT MAP OF KANSAS

by
Lee C. Gerhard

Computer compilation
and Cartography
by
Joseph A. Ross



- Drainage controlled linears
- Potential fields controlled linears
- Faults
- Wells to the Precambrian
- Estimated depth to Precambrian

Prepared on a base of Cole, Virgil B., 1974, Configuration of the Top of the Precambrian Rocks in Kansas, Kansas Geological Survey, Map 57, 1:100,000, and drainage from the Digital Kansas Cartographic Database.

The map documents linears interpreted from Cole (1974) (yellow), drainage anomalies (red), and potential field interpretations (green). The linear outline locust trends, reflecting interpreted basement structural elements.

↑
Datum: Sea Level

Scale 1:100,000
1 inch equals approximately
2.5 miles and 40,000 feet

The Kansas Geological Survey does not guarantee this map is the most current or accurate and disclaims any responsibility or liability for interpretations made from the map or derivative products.