



TECHNICAL PROGRAM "New Ideas – More Oil and Gas"

Wednesday, February 14, 2007

- Abstracts due: Friday, January 12, 2007
(see submittal instructions)

Oral Presentations

- Two concurrent oral sessions over two days
- Planned sessions and formats of papers (ORAL/POSTER) will depend on actual submittals.

**NEW
DATE**

Geology

Contact Lynn Watney

785-864-2184, lwatney@kgs.ku.edu–

- 1) Reservoir/play models and case studies;
- 2) Unconventional resources (sponsored by EMD-AAPG);
- 3) Petroleum business (sponsored by PTTC);
- 4) Integrated studies - reservoir sedimentology/ stratigraphy/ structural/ diagenesis/core and log petrophysics/ geoengineering.

Environmental Geology

Contact Chuck Brewer

316-554-0725, cbrewer@gsinetwork.com –

- 1) Environmental protection, mitigation, and case studies;
- 2) Shallow ground-water imaging.

Geophysics

Contact Rick Saenger

316-264-6366, rsaenger@mulldrilg.com –

- 1) 3D, 3D-3C, 4D seismic, and beyond;
- 2) Post-processing methodologies to delineate and characterize reservoirs and fluids;
- 3) Case studies;
- 4) Coincident gravity/magnetic and seismic interpretation.

General Poster Session

Presentation on any of the above topics.

Contact: Wan Yang

316-978-7241, wan.yang@wichita.edu

- Student awards for best *poster* and *oral papers*.

www.kgslibrary.com



Kansas Geological Society
212 North Market Street, Suite 100
Wichita, Kansas 67202

PRSRT STD US
POSTAGE PAID
Wichita KS
PERMIT NO 923

American Association of Petroleum Geologists
MID-CONTINENT SECTION MEETING

2007

CALL FOR PAPERS

**NEW
DEADLINE**

February 14, 2007

New Ideas – More Oil and Gas

September 9-11, 2007
Wichita, Kansas
Airport Hilton



www.kgslibrary.com

Hosted by: Kansas Geological Society
212 North Market Street, Suite 100
Wichita, Kansas 67202



Midcontinent Section AAPG Leadership

President – Alan De Good
Past President – William S. Boyd
Treasurer – Carroll L. Kinney
Secretary – Michael D. Allison

General Chair

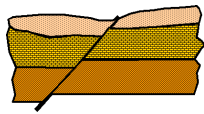
Ernie Morrison
EMorrison@MULLDRLG.com
Phone: 316-264-5368

Advisors

Alan DeGood (316-263-5785)
Fred James (316-267-7592)
Rebecca Radford (316-265-8678)



AAPG
Mid-Continent Section



Note: Students are encouraged to participate in the meeting to get feedback on their research, publish some facet of their work, and meet potential employers.

Submission of Abstracts

- Abstracts in .doc or .rtf format should be attached to an email sent to lwatney@kgs.ku.edu. **DUE DATE: ~~January 12, 2007~~ Wednesday February 14, 2007**

If you cannot submit your abstract via email, please contact: W. Lynn Watney, Kansas Geological Survey, 1930 Constant Avenue, Lawrence, Kansas. lwatney@kgs.ku.edu, ph: 785-864-2184, fax: 785-864-5317.

- **Meeting Transactions** containing abstracts, expanded abstracts, and full papers will be processed to develop a CD-ROM version of the *Mid-Continent AAPG 2007 Meeting Transactions*. Due date for expanded abstracts and papers is **May 15, 2007**. Instructions for writing papers will be sent to senior author when abstract is accepted.
- The option for a **post-meeting peer-reviewed publication** of your paper through the Kansas Geological Survey's online journal *Current Research in Earth Sciences* (www.kgs.ku.edu/Current/) is encouraged. Author will indicate their intent to submit a paper to be reviewed and published in this digital journal. For consistency, instructions to authors on preparing the manuscript and figures will be the same as for papers included on the CD-ROM distributed at the meeting. No due date. Articles reviewed as they are received.

Abstract Format: Abstracts should contain no more than 275 words and cover the objectives, procedures, results, and conclusions. The title should be brief and state the topic. Abstract titles should not include company names. Please submit your abstract in the form that you wish to see it published, as abstracts will not be edited. **Authors will be notified of acceptance or rejection in late January 2007.** Authors of accepted abstracts will have the option to submit an extended version of their abstract or full paper, which will be available on a CD-ROM meeting transactions as described above.

We seek original works and discourage submittal of previously presented materials. Authors may solicit contributions from others to develop and chair specific theme sessions. However, an invitation to submit does not guarantee acceptance into the program. Final decisions for acceptance rest with the technical program committee.

CALL FOR PAPERS

Information for Presenters

AAPG has no funding for speakers. Do not submit an abstract unless at least one author is certain to attend the convention. All session chairs, speakers, and poster presenters must register to attend the convention.

Oral Sessions

PowerPoint will be the ONLY presentation format available. Speakers will be connected to one electronic data projector and have access to one screen and a pointer. Slide projectors, overhead projectors, and multiple screens will not be available. All computers will be Microsoft Windows-based with Microsoft Office 2003.

Poster Sessions

Presenters will have access to three 4'x8' display panels (long dimension horizontal). Tables and electrical outlets will be available upon request. Any special equipment, such as projectors, computers or microscopes, must be provided by the authors. Responsibility for special equipment lies with the authors.

NON-ENDORSEMENT POLICY

The American Association of Petroleum Geologists (AAPG) does not endorse or recommend any products and services that may be cited, used, or discussed in AAPG publications or in presentations at events associated with AAPG.

Other Meeting Activities and Contacts

Field Trips (Sal Mazzullo, 316-978-7211)
Short Courses (Tim Carr, 785-864-2135)
Social Activities (Doug Davis, 316-263-5785)
Exhibits (Larry Richardson, 316-262-8427)
Sponsors (Debbie FitzGerald, 316-634-2526)
Guest/Spouse Activities (Linda Beauchamp)
Publicity (Paul Gunzelman, 316-634-6026)
Judging (Larry Friend, 316-265-3000)