

GEOLOGIC CROSS SECTIONS

Clay County, Kansas

By

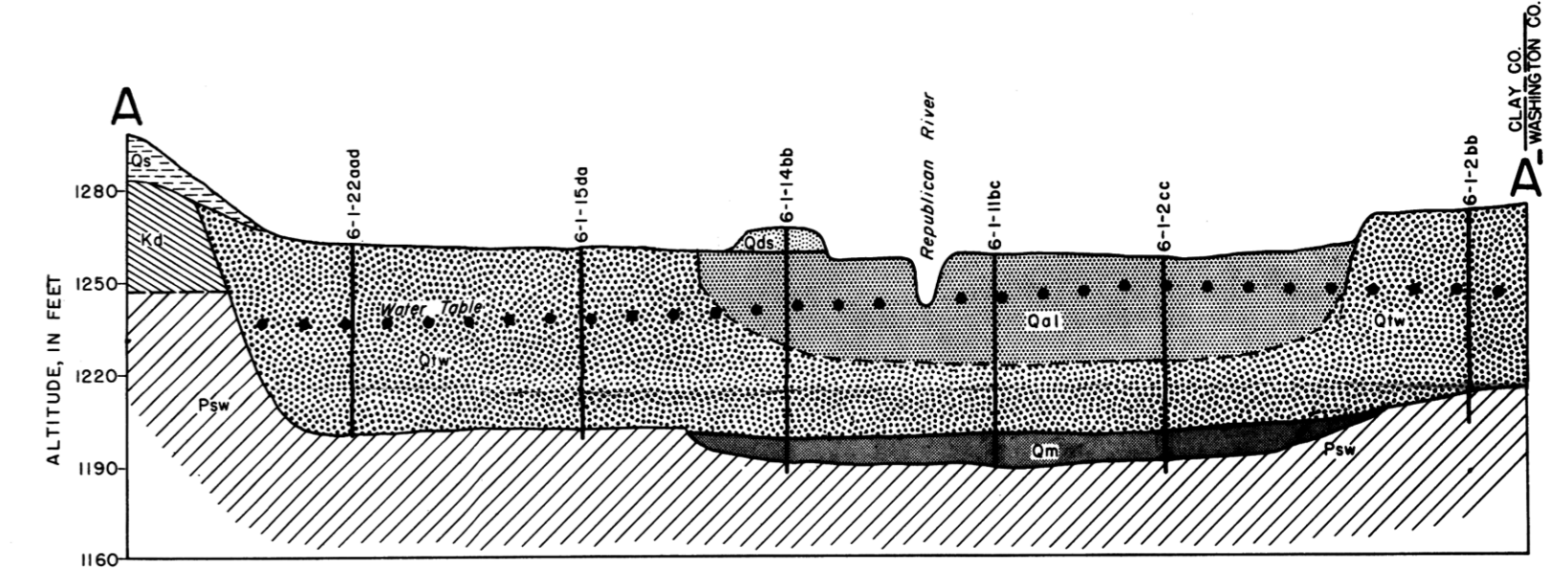
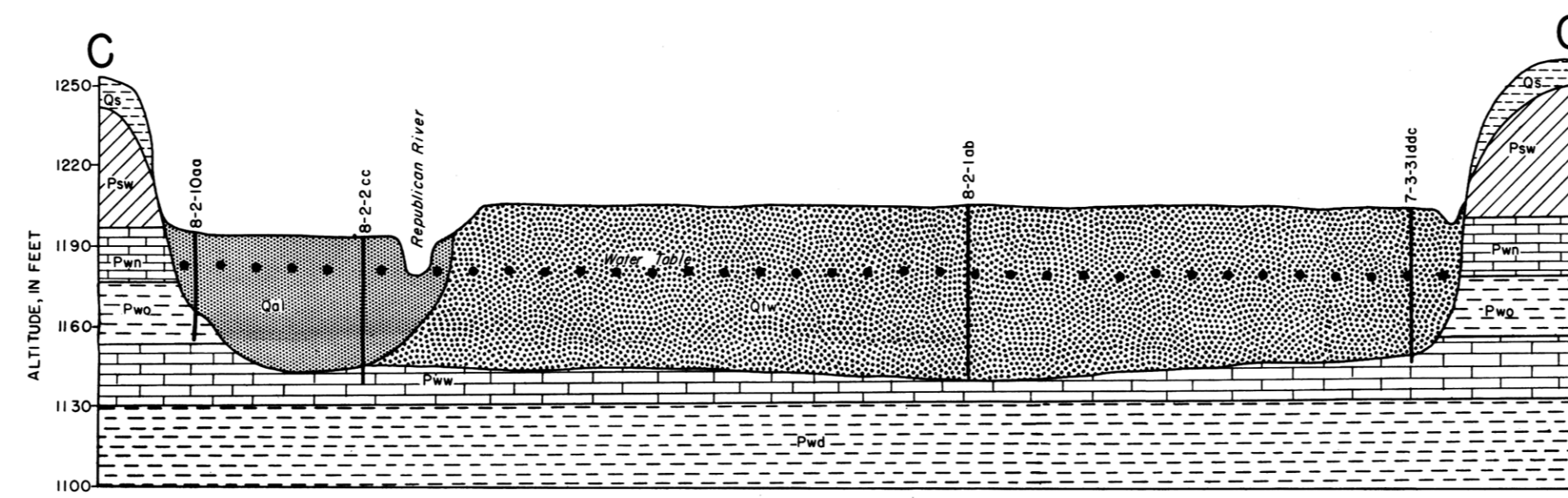
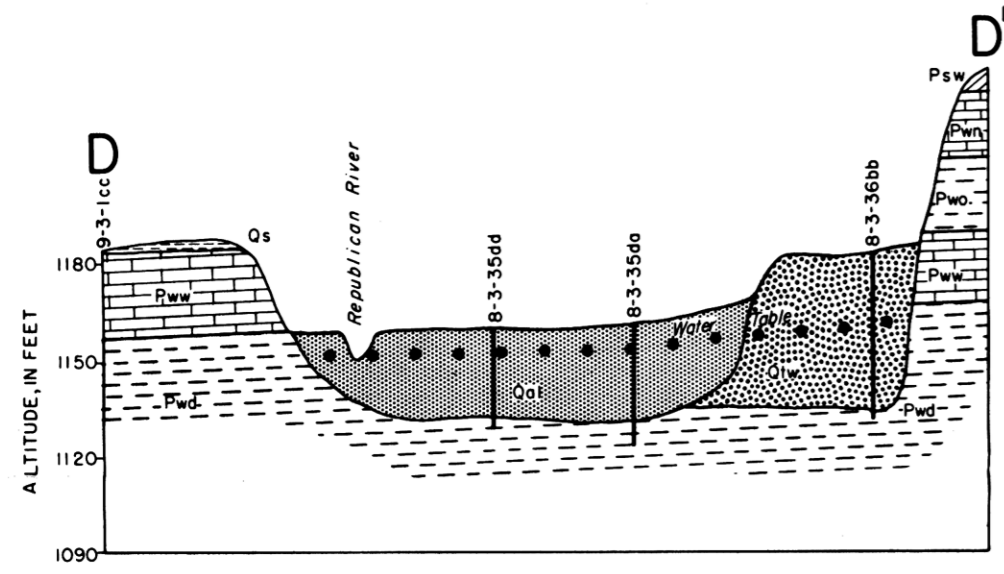
Kenneth L. Walters and Charles K. Bayne

1954

Bulletin 136

Plate 3

State Geological Survey of Kansas



EXPLANATION

Qds	Dune sand	} QUATERNARY	} LEONARDIAN
Qal	Alluvium		
Oiw	Wisconsinan terrace deposits		
Qs	Sanborn Group		
Oal	Illinoian terrace deposits		
Om	Meade Group		
Kd	Dakota Formation	} GULFIAN	} PERMIAN
Psw	Wellington Formation		
Pwn	Nolans Limestone		
Pwo	Odell Shale		
Pww	Winfield Limestone	} WOLF CAMPIAN	} PERMIAN
Pwd	Doyle Shale		

