

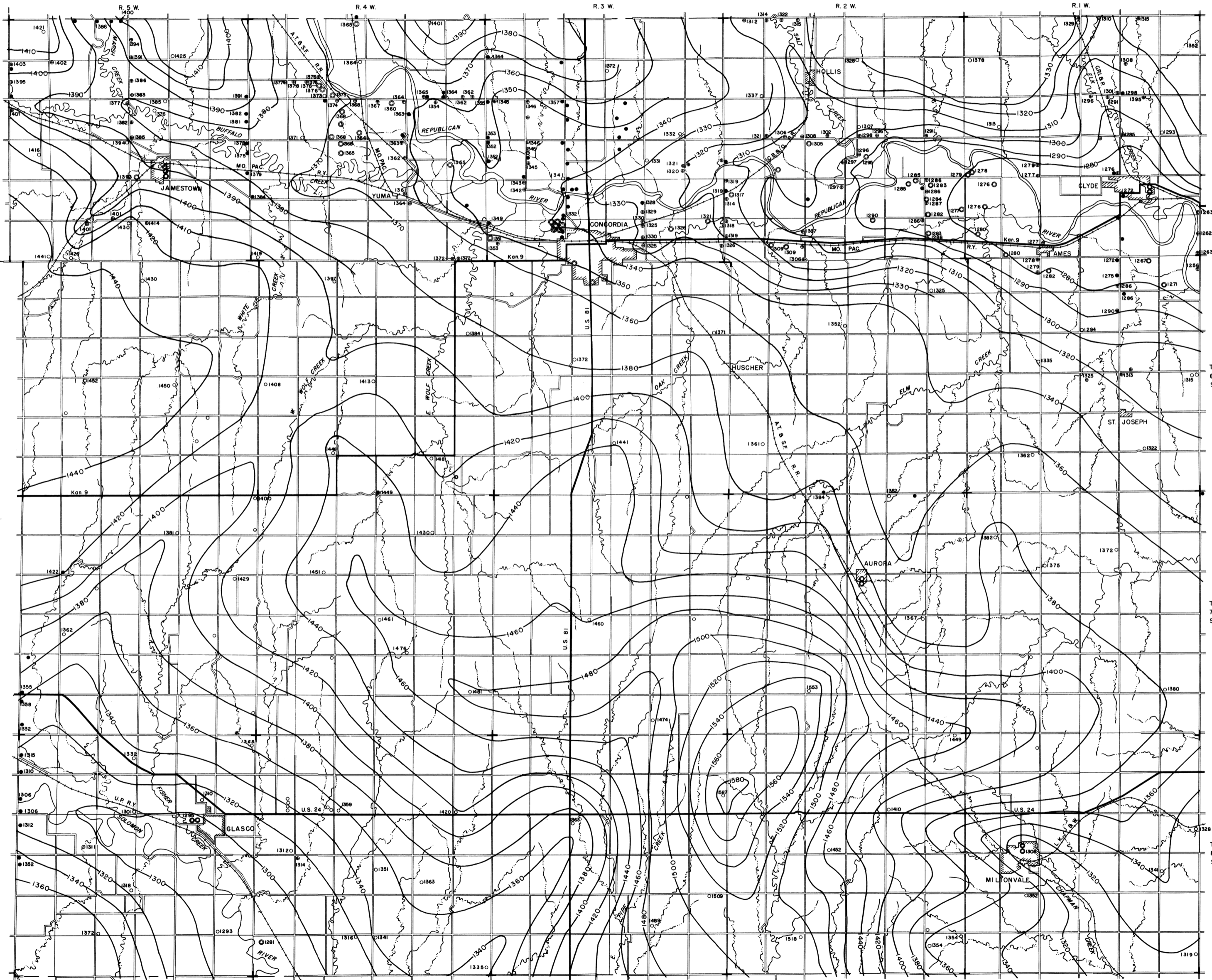
MAP OF CLOUD COUNTY, KANSAS

showing water-table contours and wells, test holes,
and auger holes for which records are given

by Charles K. Bayne and Kenneth L. Walters
1954

State Geological Survey
of Kansas

Bulletin 139
Plate 2

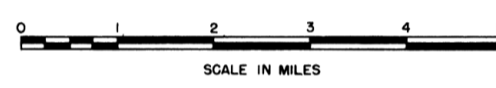


EXPLANATION

- Domestic and stock well
- Auger hole
- Test hole
- Irrigation well
- Public supply well

— 1400 —
Contours based on instrumental levels. Contour interval 10 feet in valley area and 20 feet in upland area.

○ 1381
Number refers to altitude of water level.



Base compiled from map prepared by
the Soil Conservation Service

Drainage from map prepared by
U. S. Dept. of Agriculture