



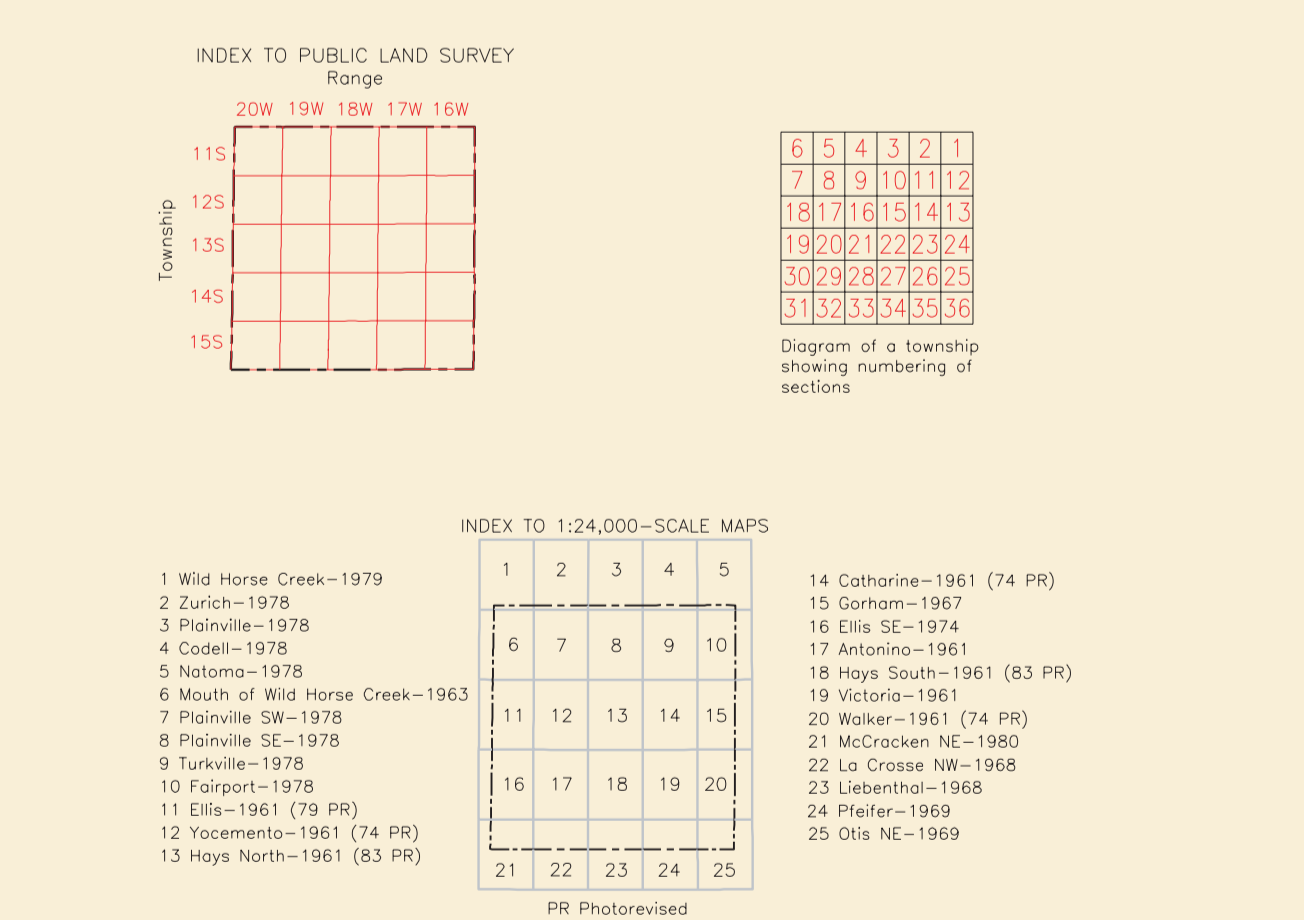
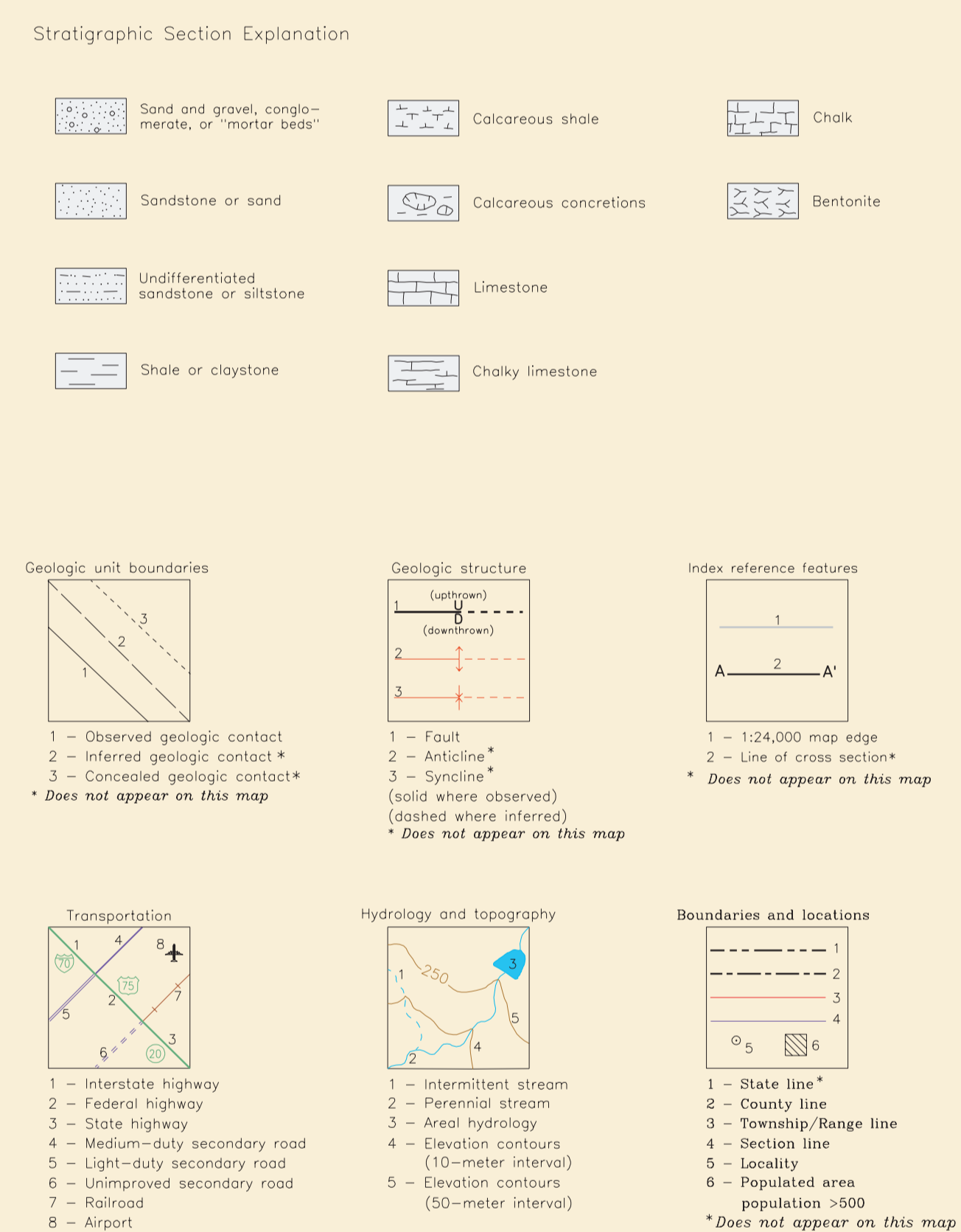
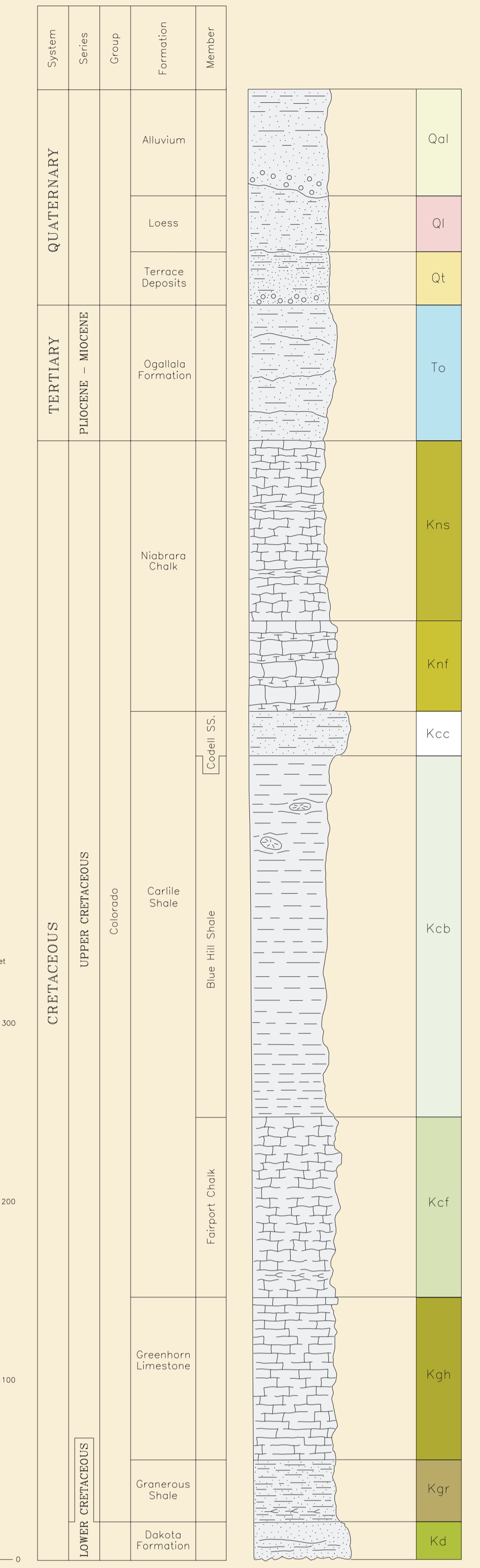
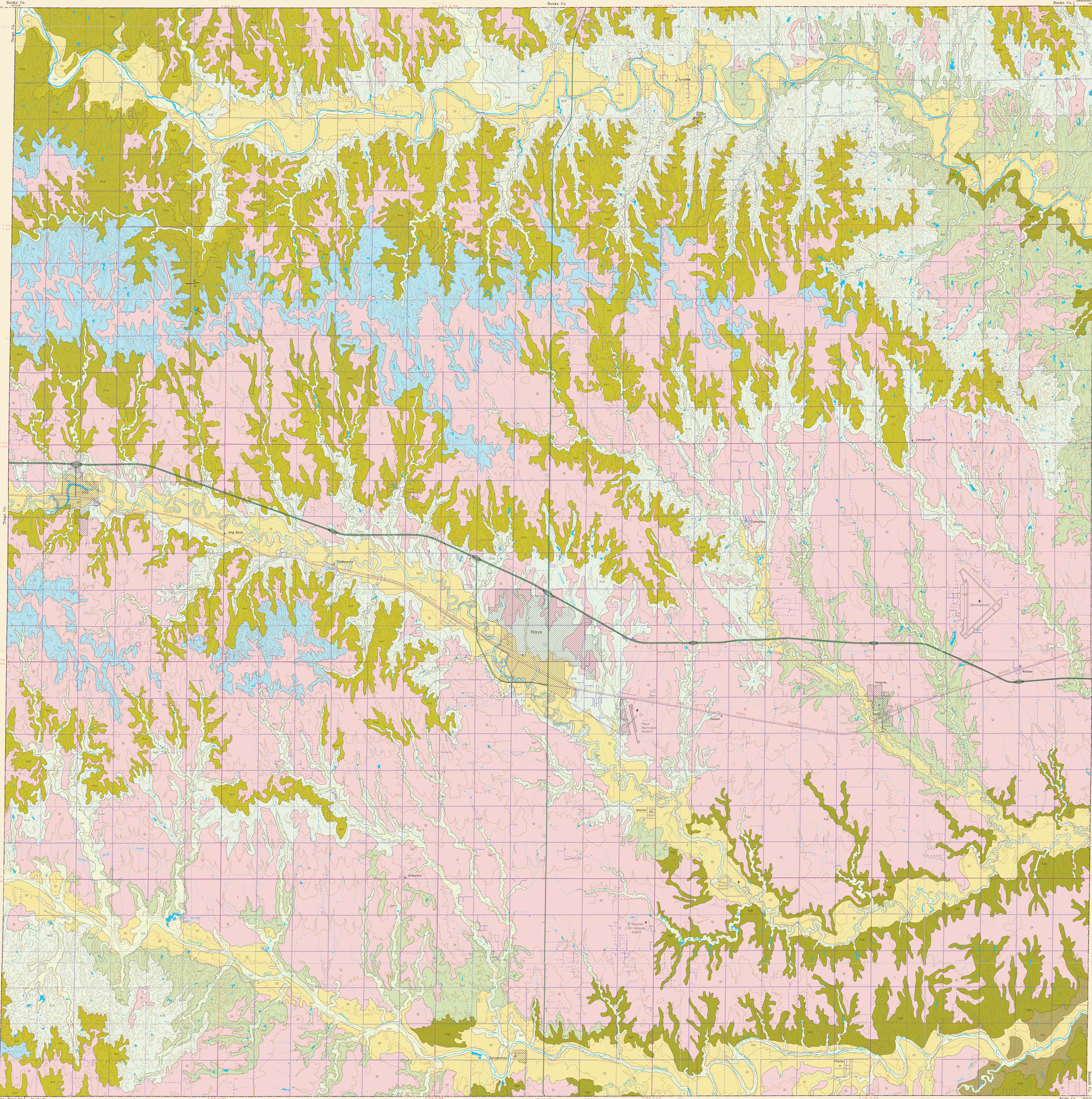
GEOLOGIC MAP OF ELLIS COUNTY, KANSAS

1988

Revised and Reprinted, 1996

Kenneth R. Neuhauser
James C. Pool

Computer compilation by
Junguo A. Ross
Michael Kwak-Wing Wong
Weng C. Wong
Charles C. Ross



ACKNOWLEDGMENTS

This map was compiled by James C. Pool under the supervision of Kenneth R. Neuhauser, Fort Hays State University. The work was funded by the Kansas Geological Survey and coordinated by Frank W. Wilson, Senior Geologist.

The geology was interpreted from air photography and from the Ellis County Soil Report and maps published by the U.S. Department of Agriculture, Soil Conservation Service, August, 1975, and from Construction Materials in Ellis County, Kansas, U.S. Geological Survey Circular 30, April 1949. Some areas were checked on the field under the general direction of...

Elevation contours are presented for general reference. They are taken from 1:24,000-scale maps (1:24,000) from contour lines from base maps at a scale of 1:100,000. In some places the contours from base maps do not exactly follow the topographic contours used for compilation of geologic outcrop patterns. Outcrop patterns on the map will generally reflect topographic contours more accurately than the associated contour lines. Repeated fluctuations of an outcrop line across a contour line should be interpreted as an indication that the mapped rock unit is representing a relatively constant elevation along a generalized contour.

This map was produced by computer-aided cartography using the CIMAP (Geological Interactive Management Map Analysis and Production) system developed at the Kansas Geological Survey.

The Kansas Geological Survey does not guarantee this map to be free from errors of omission and disclaims any responsibility or liability for interpretations made from the map or its derivative products.

Conversion Table

Feet	Meters	Centimeters	Miles
1	0.3048	30.48	0.0001578
100	30.48	3048	0.0001578
1000	304.8	30480	0.0001578
10000	3048	304800	0.0001578

To convert feet to meters multiply by 0.3048
To convert meters to feet multiply by 3.2808
To convert kilometers to miles multiply by 0.62137
To convert miles to kilometers multiply by 1.60934