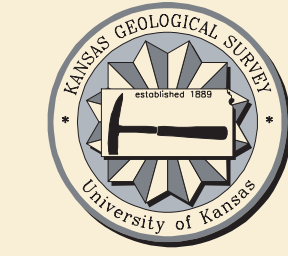


GEOLOGIC MAP OF LABETTE COUNTY, KANSAS

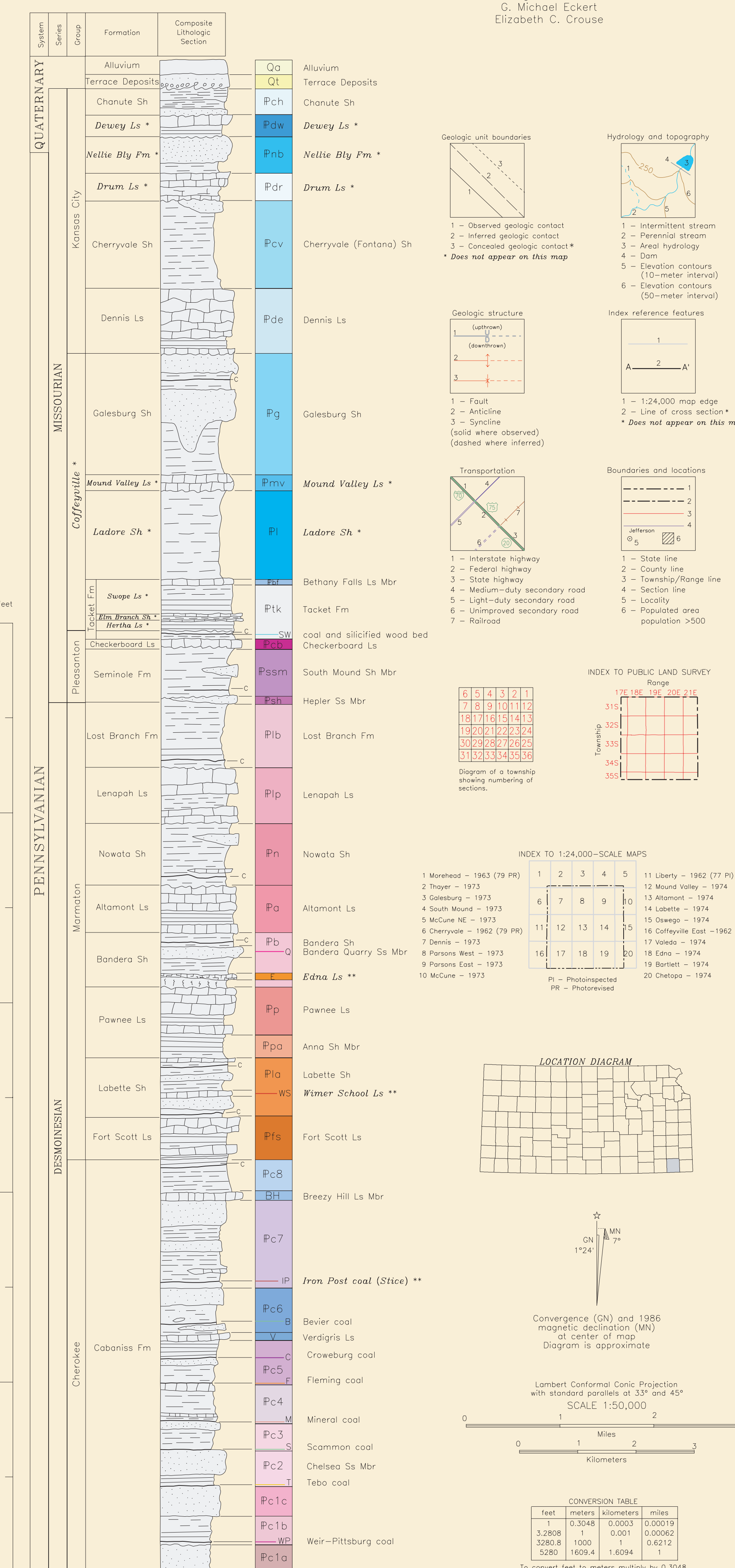
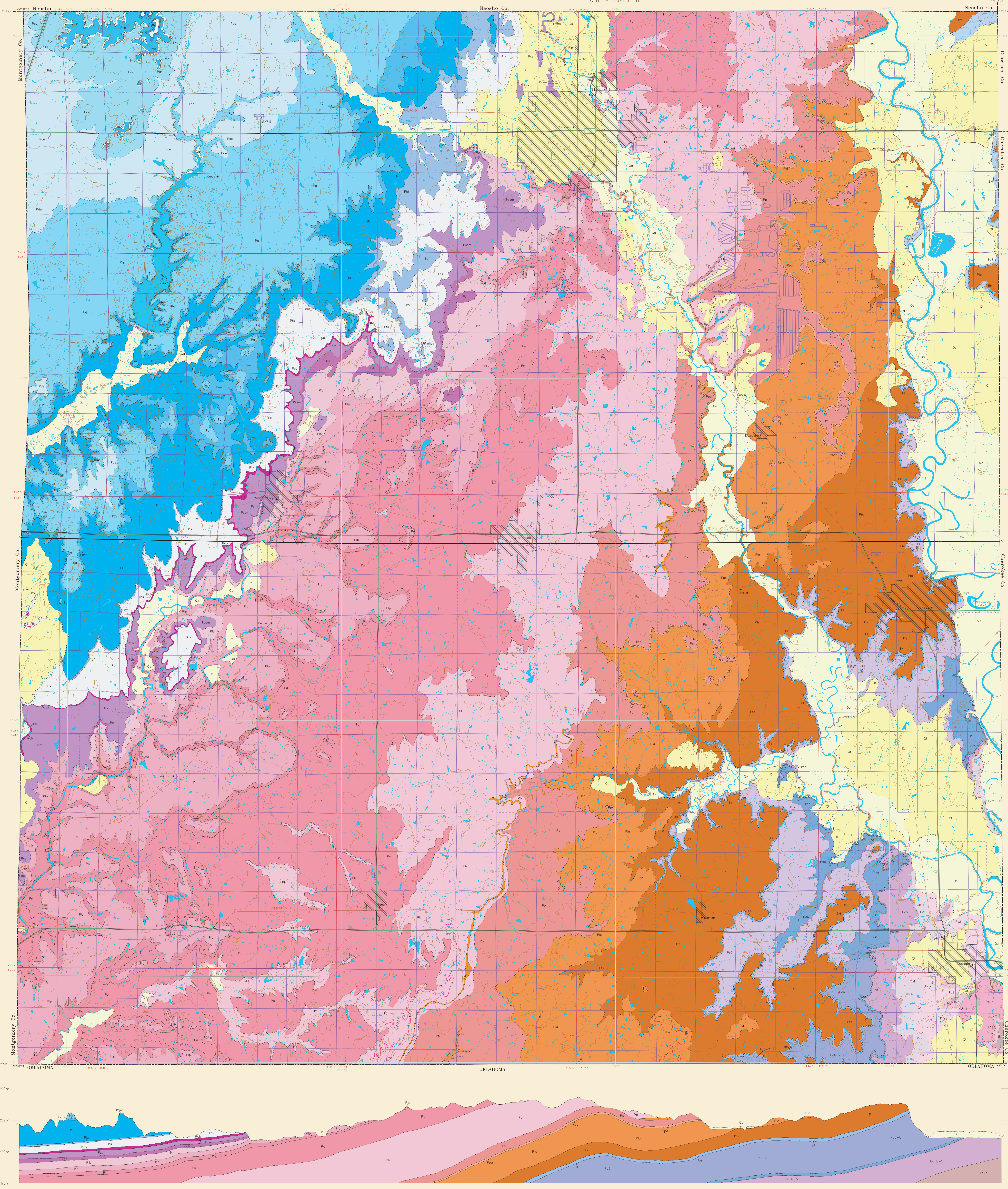
1998

Allan P. Bennison



KANSAS GEOLOGICAL SURVEY
THE UNIVERSITY OF KANSAS
MAP M-48

Computer compilation and cartography by
Jorgina A. Reas
C. Michael Eckert
Elizabeth C. Crouse



Stratigraphic terms pending Kansas Geological Survey recommendations. ** These stratigraphic terms are not officially recognized by the Kansas Geological Survey.

EXPLANATION

- Sand and gravel, conglomerate, or "barber sand"
- Siltstone or sand
- Siltstone
- Unconsolidated silt and clay
- Shale or siltstone
- Block shale
- Coal or lignite locally with underlain
- Limestone

CONVERSION TABLE

feet	meters	miles
3,280.8	1.0	0.00062137
6,561.6	2.0	0.00124274
10,932.5	3.0	0.00186411
15,243.4	4.0	0.00248548
19,609.3	5.0	0.00310685
23,975.2	6.0	0.00372822
28,341.1	7.0	0.00434959
32,707.0	8.0	0.00497096
37,072.9	9.0	0.00559233
41,438.8	10.0	0.00621370
45,804.7	11.0	0.00683507
50,170.6	12.0	0.00745644
54,536.5	13.0	0.00807781
58,902.4	14.0	0.00869918
63,268.3	15.0	0.00932055
67,634.2	16.0	0.00994192
72,000.1	17.0	0.01056329
76,366.0	18.0	0.01118466
80,731.9	19.0	0.01180603
85,097.8	20.0	0.01242740

To convert feet to meters multiply by 0.3048
To convert meters to feet multiply by 3.2808
To convert miles to kilometers multiply by 1.60934
To convert kilometers to miles multiply by 0.621371

INDEX TO PUBLIC LAND SURVEY MAPS

Year	1	2	3	4	5
1887-1893 (76 P)	1	2	3	4	5
1893-1900 (76 P)	6	7	8	9	10
1900-1907 (76 P)	11	12	13	14	15
1907-1914 (76 P)	16	17	18	19	20
1914-1921 (76 P)	21	22	23	24	25
1921-1928 (76 P)	26	27	28	29	30
1928-1935 (76 P)	31	32	33	34	35
1935-1942 (76 P)	36	37	38	39	40
1942-1949 (76 P)	41	42	43	44	45
1949-1956 (76 P)	46	47	48	49	50
1956-1963 (76 P)	51	52	53	54	55
1963-1970 (76 P)	56	57	58	59	60
1970-1977 (76 P)	61	62	63	64	65
1977-1984 (76 P)	66	67	68	69	70
1984-1991 (76 P)	71	72	73	74	75
1991-1998 (76 P)	76	77	78	79	80

INDEX TO 1:24,000-SCALE MAPS

Year	1	2	3	4	5
1887-1893 (76 P)	1	2	3	4	5
1893-1900 (76 P)	6	7	8	9	10
1900-1907 (76 P)	11	12	13	14	15
1907-1914 (76 P)	16	17	18	19	20
1914-1921 (76 P)	21	22	23	24	25
1921-1928 (76 P)	26	27	28	29	30
1928-1935 (76 P)	31	32	33	34	35
1935-1942 (76 P)	36	37	38	39	40
1942-1949 (76 P)	41	42	43	44	45
1949-1956 (76 P)	46	47	48	49	50
1956-1963 (76 P)	51	52	53	54	55
1963-1970 (76 P)	56	57	58	59	60
1970-1977 (76 P)	61	62	63	64	65
1977-1984 (76 P)	66	67	68	69	70
1984-1991 (76 P)	71	72	73	74	75
1991-1998 (76 P)	76	77	78	79	80

LOCATION DIAGRAM

Convergence (G) and 1886 magnetic declination (M) are shown. Diagram is approximate.

Lambert Conformal Conic Projection with standard parallels at 33° and 40°

SCALE 1:50,000

GENERAL GEOLOGY The geology of Labette County provides important data on depositional patterns and tectonic evolution in the midcontinent area during the transition from the Middle Pennsylvanian to the Permian. The geology of Labette County is a complex of Pennsylvanian, Permian, and Quaternary rocks. The Pennsylvanian rocks are the most extensive and are divided into the lower and upper divisions. The Permian rocks are the most recent and are divided into the lower and upper divisions. The Quaternary rocks are the most recent and are divided into the lower and upper divisions.

STRATIGRAPHIC SEQUENCE Except for Quaternary alluvial deposits, the stratigraphic sequence in Labette County is the Pennsylvanian System. The Pennsylvanian System is divided into the lower and upper divisions. The lower division is the most extensive and is divided into the lower and upper divisions. The upper division is the most recent and is divided into the lower and upper divisions.

TECTONIC HISTORY AND STRATIGRAPHY OF LABETTE COUNTY, KANSAS The tectonic history of Labette County is a complex of Pennsylvanian, Permian, and Quaternary rocks. The Pennsylvanian rocks are the most extensive and are divided into the lower and upper divisions. The Permian rocks are the most recent and are divided into the lower and upper divisions. The Quaternary rocks are the most recent and are divided into the lower and upper divisions.

REFERENCES

Bredy, L.L. and others, 1934, Coal resources of the Joplin 1°42' Quadrangle, Kansas and Missouri. Kansas Geological Survey and Missouri Department of Natural Resources, Division of Geology and Land Survey.

Hess, W. B., 1900, Stratigraphy of Pennsylvanian (Chester) rocks in southeastern Kansas. Kansas Geological Survey Bulletin 123, 132p.

Jungmann, W. C. and Williams, C. C., 1958, Geology and ground water in Labette County, United States Geological Survey Bulletin 279.

Pence, W. C. and Courter, W. H., 1937, Geology and coal resources of the southeastern coal field in Crawford, Cherokee and Labette counties. Kansas Geological Survey Bulletin 24, p. 1-91.