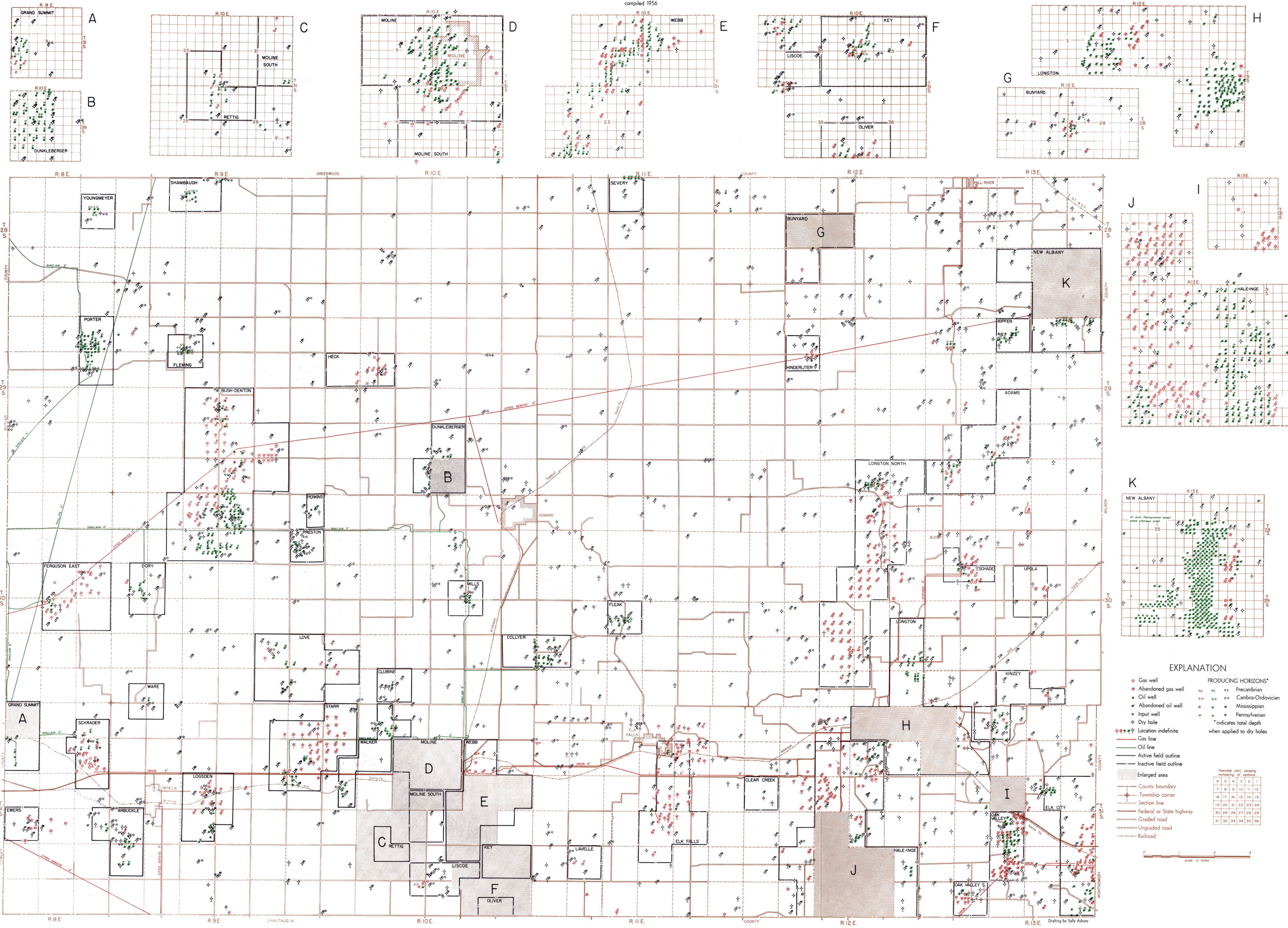


Oil and Gas Resources of Elk County, Kansas

STATE GEOLOGICAL SURVEY OF KANSAS

by William R. Atkinson, Edwin D. Goebel, Paul L. Hilpman, Frank Moffitt, and R. K. Smith, 1957
compiled 1956

VOLUME 14, PLATE 2



EXPLANATION

- Gas well
- Abandoned gas well
- Oil well
- Abandoned oil well
- Input well
- ◇ Dry hole
- Location indefinite
- Gas line
- Oil line
- Active field outline
- Inactive field outline
- Enlarged area
- County boundary
- Township corner
- Section line
- Federal or State highway
- Graded road
- Ungraded road
- Railroad

PRODUCING HORIZONS*

- pc Precambrian
- co Cambro-Ordovician
- ms Mississippian
- pn Pennsylvanian
- * indicates total depth when applied to dry holes

Township grid showing township numbers											
6	5	4	3	2	1						
7	8	9	10	11	12						
13	14	15	16	17	18						
19	20	21	22	23	24						
25	26	27	28	29	30						
31	32	33	34	35	36						

Scale in miles: 0 1 2 3

Drafting by Sally Abby