

MAP OF GOVE COUNTY

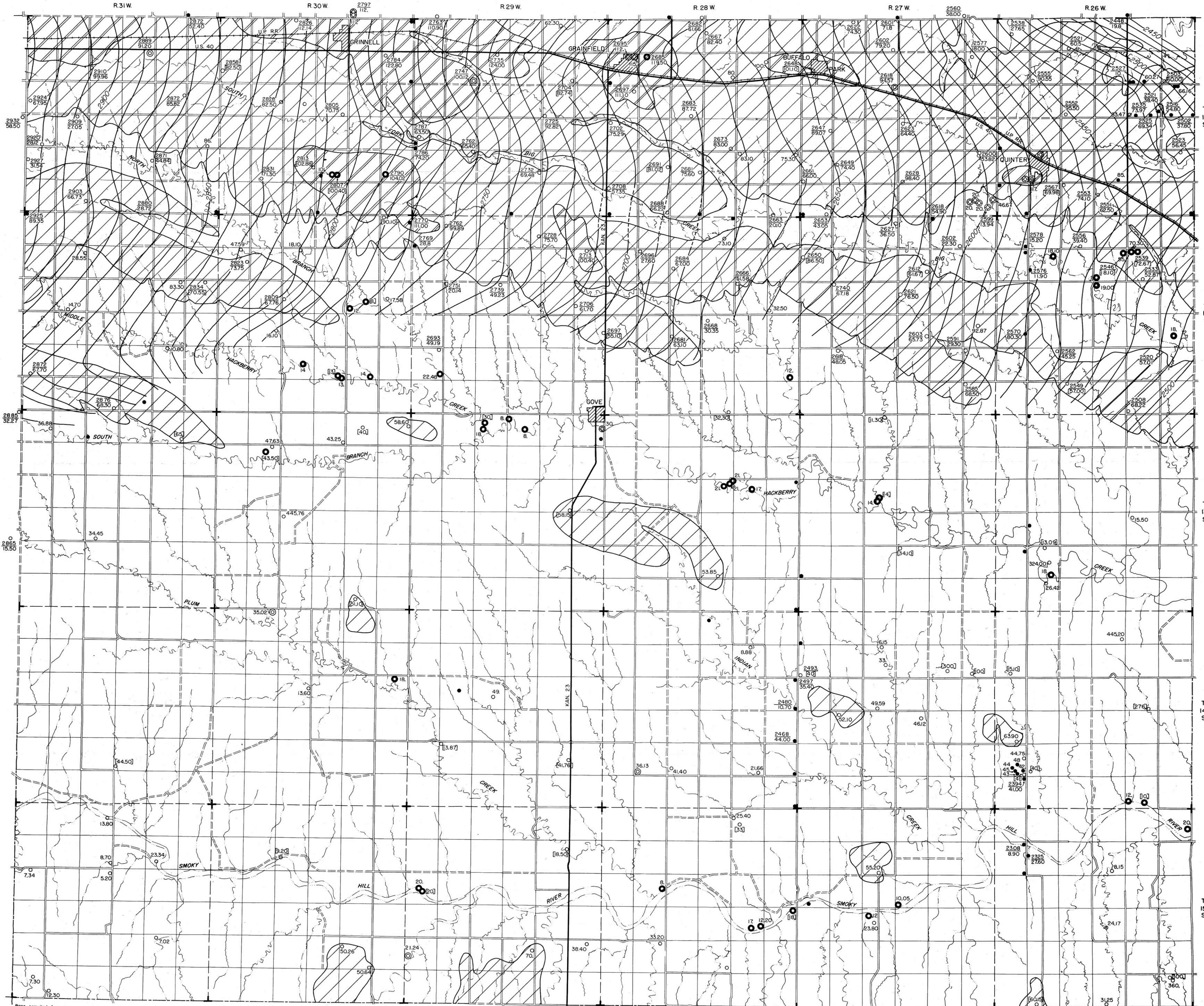
showing the depths to water level, the location of wells and test holes for which records are given, and water-table contours

By Warren G. Hodson and Kenneth D. Wahl
1956

Bulletin 145

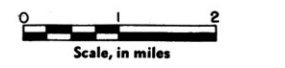
Plate 2

State Geological Survey
of Kansas



EXPLANATION

- 50-100
- 100-150
- Depth to water level below land surface, in feet
- Area in which the water table is less than 50 feet below land surface and is generally discontinuous
- Domestic or stock well
- Public supply well
- Irrigation well
- Test hole
- Observation well and domestic or stock well
- 2700—
- Altitude of water table, in feet
- Water-table contours based on instrumental levels (dashed where approximate)
- Contour interval, 10 feet
- Upper number indicates altitude of water table, in feet
Lower number indicates depth to water level, in feet
(Only one number indicates depth to water level)
Brackets around number, (82.50), indicate that analysis of water is given
- Federal or State Highway
- Graded road
- Ungraded road
- Railroad
- County line (no road)
- Township line (no road)
- Section line (no road)
- Intermittent stream



Base compiled from map prepared by the Soil Conservation Service