

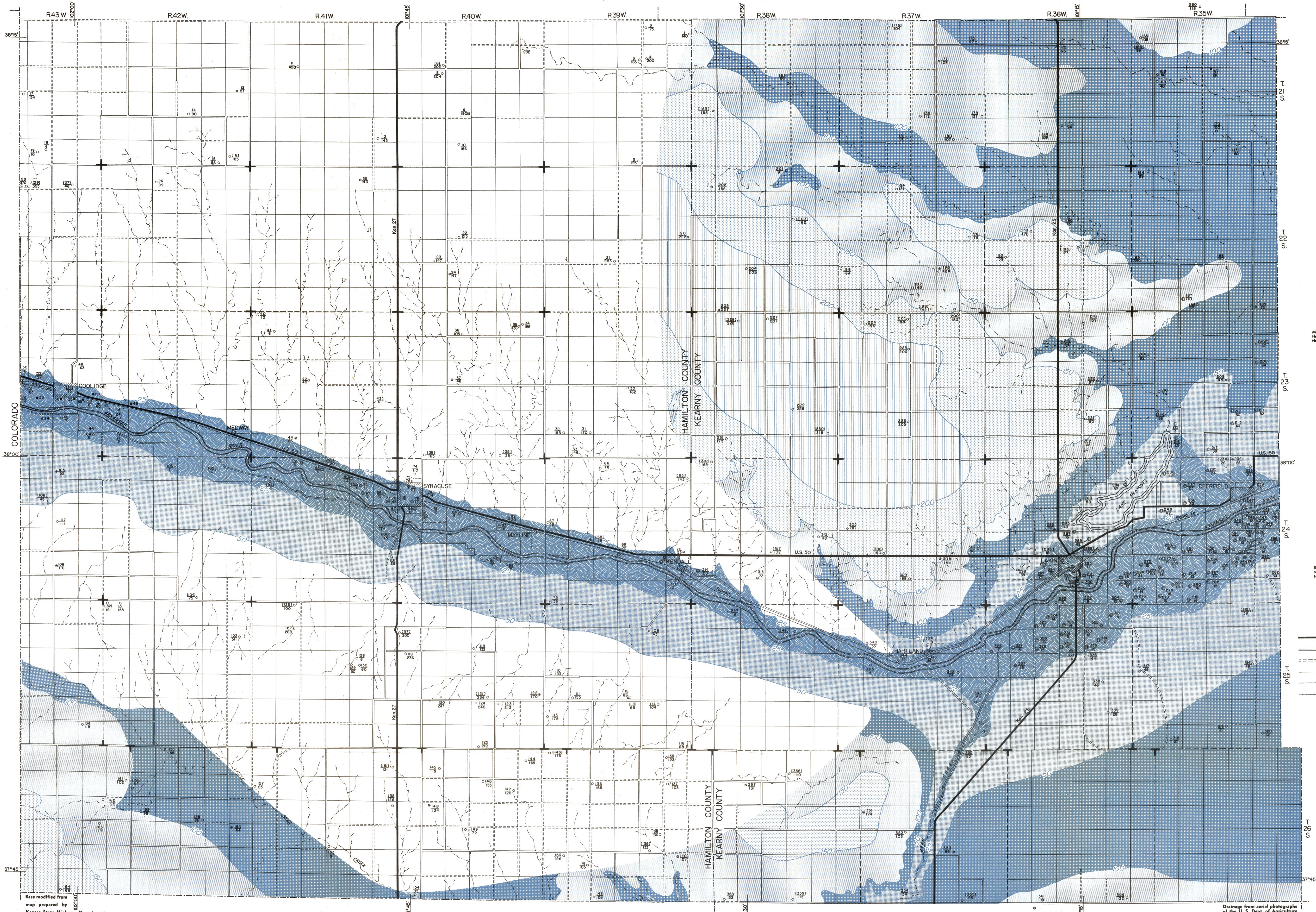
MAP OF HAMILTON AND KEARNY COUNTIES, KANSAS

Showing the depths to Water Level and the Location
of Wells for which Records are given

By Thad G. McLaughlin
1940

Bulletin 49
Plate 2

State Geological Survey
of Kansas



EXPLANATION

- Area in which water table generally is absent.
 - Less than 25
 - 25-50
 - 50-100
 - 100-150
 - 150-200
 - More than 200
- Depth to water level below land surface, in feet

Moderate quantities of water may be obtained from the Dakota formation of moderate depths south of the river and at great depths north of the river.

- Domestic and stock well
- ⊙ Irrigation well
- ⊕ Public supply well
- ⊗ Observation well
- Flowing well

Upper number is well number used in well tables. Brackets around upper number, 235, indicate that analysis of water is given. Lower number is depth to water level below land surface, in feet.

- Federal or State highway
- Graded road
- - - - - Ungraded road
- - - - - Section line (no road)
- - - - - Township line (no road)
- Railroad

6	5	4	3	2	1
7	8	9	10	11	12
13	14	15	16	17	18
19	20	21	22	23	24
25	26	27	28	29	30
31	32	33	34	35	36

Order in which wells are numbered within a township and within a section

Base modified from map prepared by Kansas State Highway Department

Drainage from aerial photographs of the U. S. Dept. of Agriculture

