

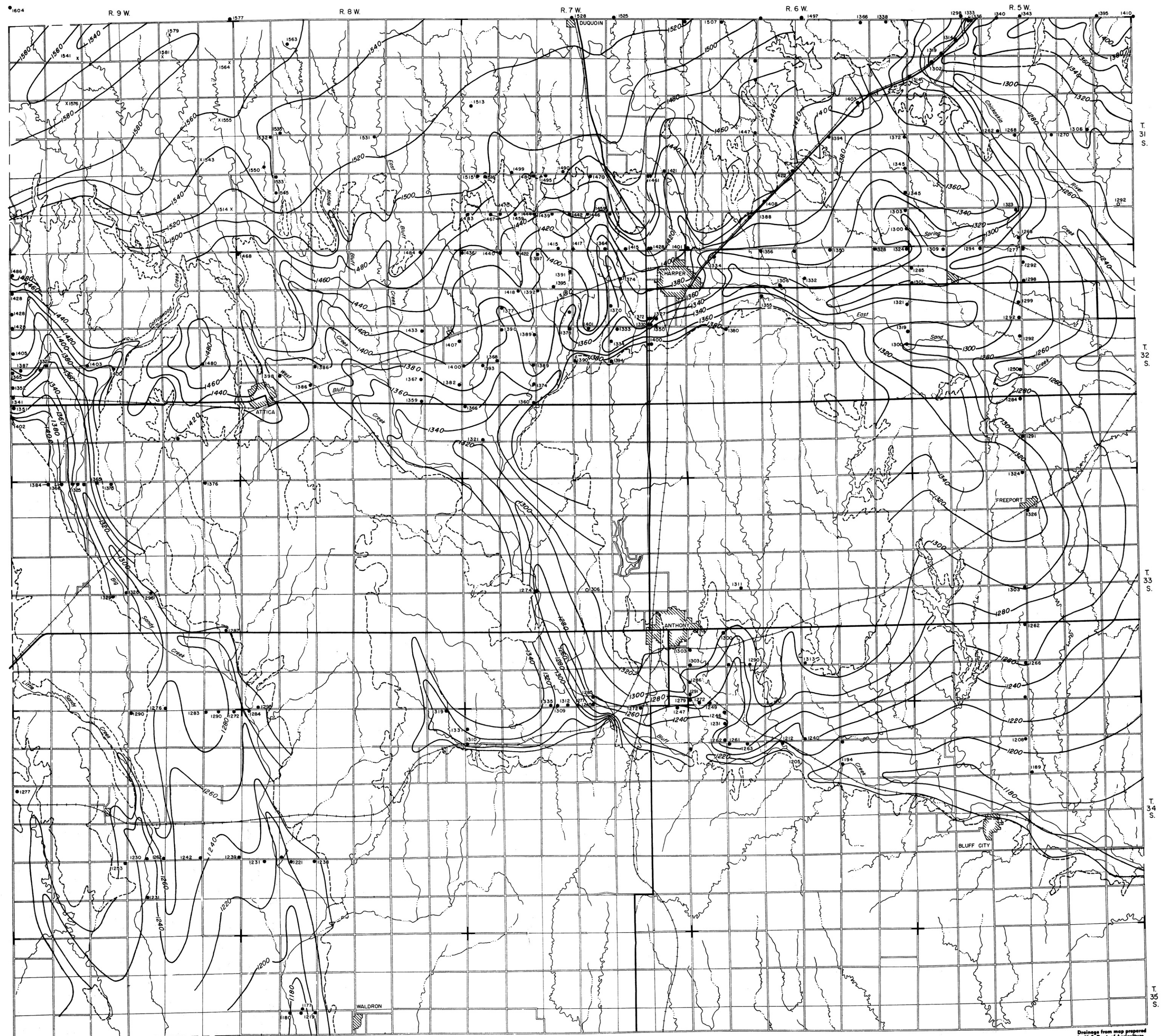
CONFIGURATION OF THE PRE-PLEISTOCENE SURFACE IN A PART OF HARPER COUNTY

Bulletin 143

Plate 4

By Charles K. Bayne
1956

State Geological Survey
of Kansas



EXPLANATION

- 1563
Test hole or well
Number indicates bedrock altitude
- 1500 —
Bedrock contour
Contour interval 20 feet
- P —
Permian-Pleistocene contact

T. 31 S.
T. 32 S.
T. 33 S.
T. 34 S.
T. 35 S.