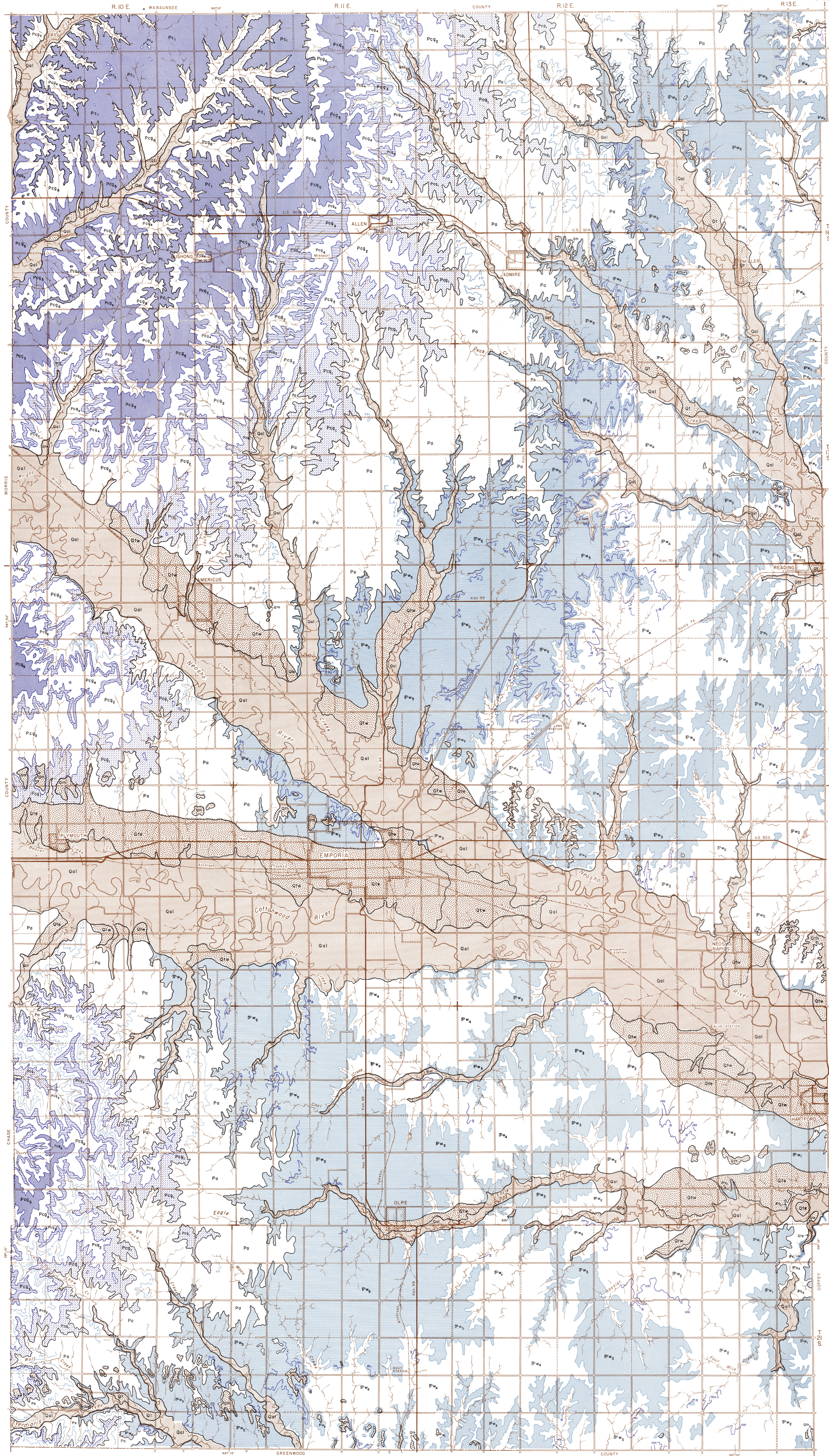


Areal Geology of Lyon County, Kansas

STATE GEOLOGICAL SURVEY OF KANSAS

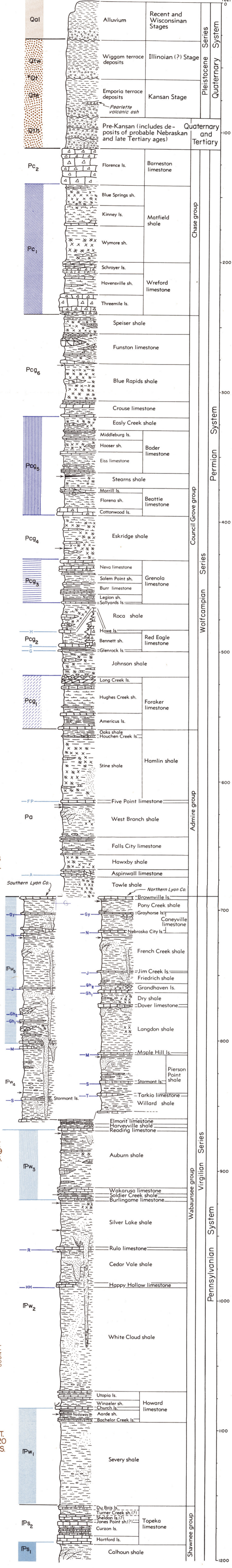
By Howard G. O'Connor, 1952

VOLUME 12, PLATE 1

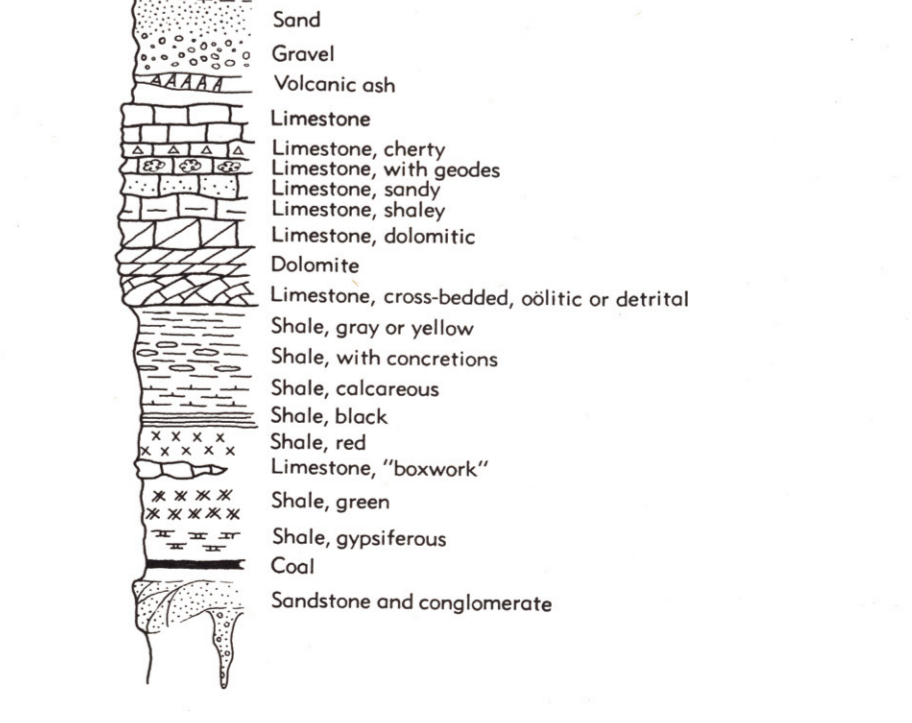


EXPLANATION

Generalized stratigraphic column of outcropping rocks:



Key to lithology



Drainage and base adapted from aerial photographs of the U.S. Dept. of Agriculture