

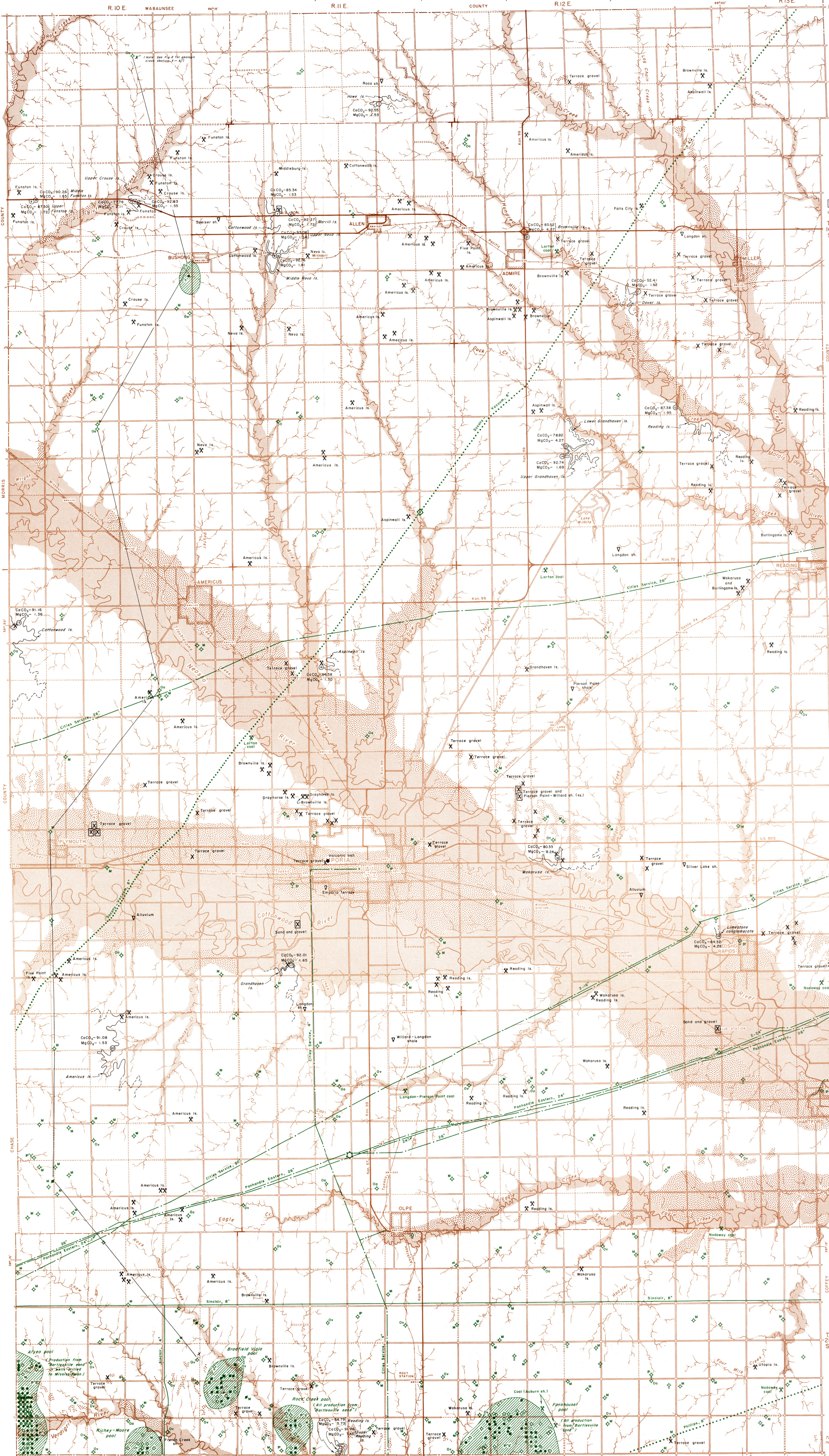
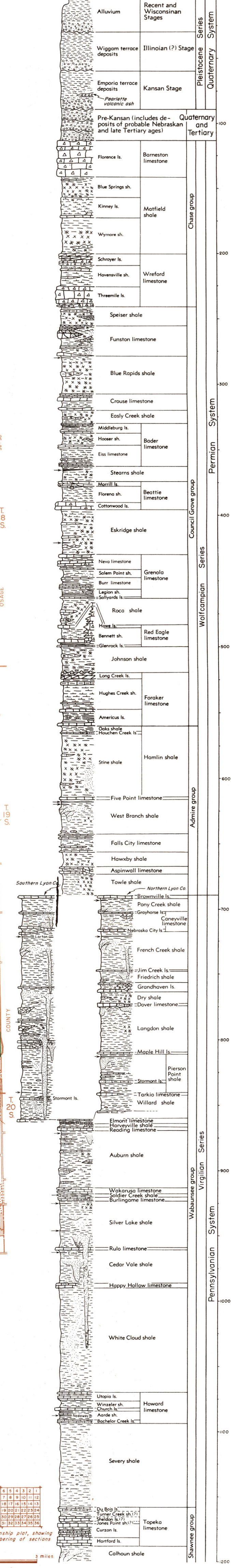
By Howard G. O'Connor, Edwin D. Goebel, and Norman Plummer, 1952

EXPLANATION

- MINERAL FUELS DATA**
- Oil pool
 - Oil well
 - Abandoned oil well
 - Water supply well
 - Input well
 - Dry hole
 - No log
 - Location indefinite
 - Products line
 - Oil line
 - Gas line
 - Booster station
 - Compressor station
 - Coal mines
- Symbols for oil producing rocks**
- Pennsylvanian (Undif.)
 - "Bartlesville sand" (Pennsylvanian)
 - "Bartlesville sand" (Pennsylvanian)
 - Permian
 - Pennsylvanian (Undif.)
 - "Bartlesville sand" (Pennsylvanian)
 - Mississippian
 - "Horton" (Devonian)
 - Ordovician (Undif.)
 - Viola (Ordovician)
 - Simpson ss. (Ordovician)
 - Atsuckle (Ordovician)
 - Pre-Cambrian
- Symbols for total depths of wells:**
- Permian
 - Pennsylvanian (Undif.)
 - "Bartlesville sand" (Pennsylvanian)
 - Mississippian
 - "Horton" (Devonian)
 - Ordovician (Undif.)
 - Viola (Ordovician)
 - Simpson ss. (Ordovician)
 - Atsuckle (Ordovician)
 - Pre-Cambrian

- OTHER NONMETALLIC MINERAL RESOURCES**
- Sand and gravel pit
 - Limestone quarry
 - Volcanic ash pit
 - Clay or shale sample location
 - Commercial pit or quarry
 - Depleted pits or quarries
 - Limestone outcrop line
 - Adjacent to sample localities
 - Numbers refer to chemical analyses, Table 1
 - Terrace gravels
 - Alluvium

Generalized section of rocks showing thickness, lithology, and beds associated with the mined, quarried, or sampled mineral deposits of Lyon County. Ceramic and chemical test data are given in Tables 1, 2, and 3 and a great extent of stratigraphic units is shown on Plate 1.



Discharge and base adapted from aerial photographs of the U.S. Dept. of Agriculture

County boundary Township boundary Section line Federal or State highway Graded road Ungraded road Railroad Perennial stream Intermittent stream Lake or pond Dam Monumented benchmark with spirit level elevation