

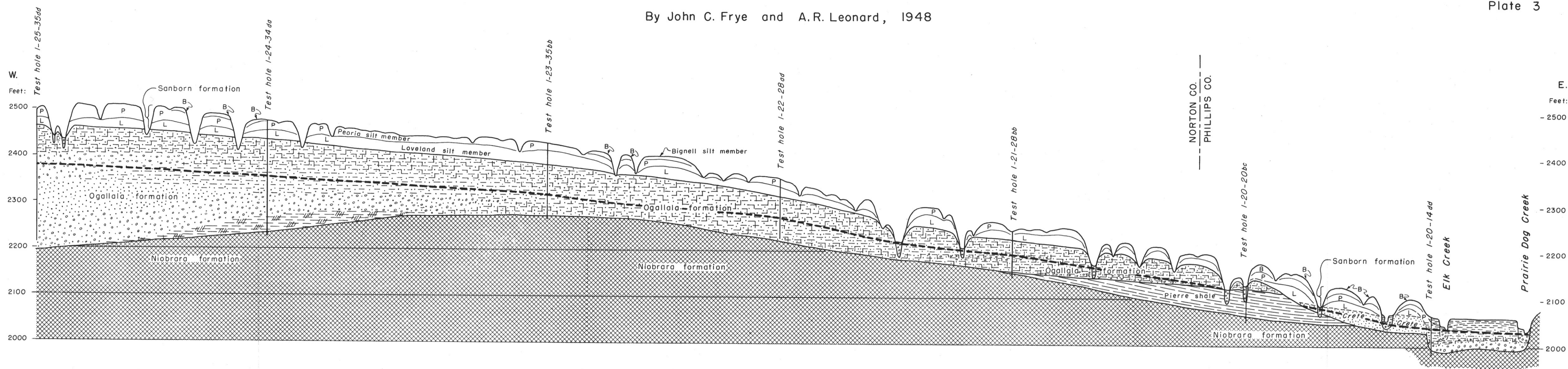
GEOLOGIC CROSS SECTIONS

NORTON COUNTY AND NORTHWESTERN PHILLIPS COUNTY, KANSAS

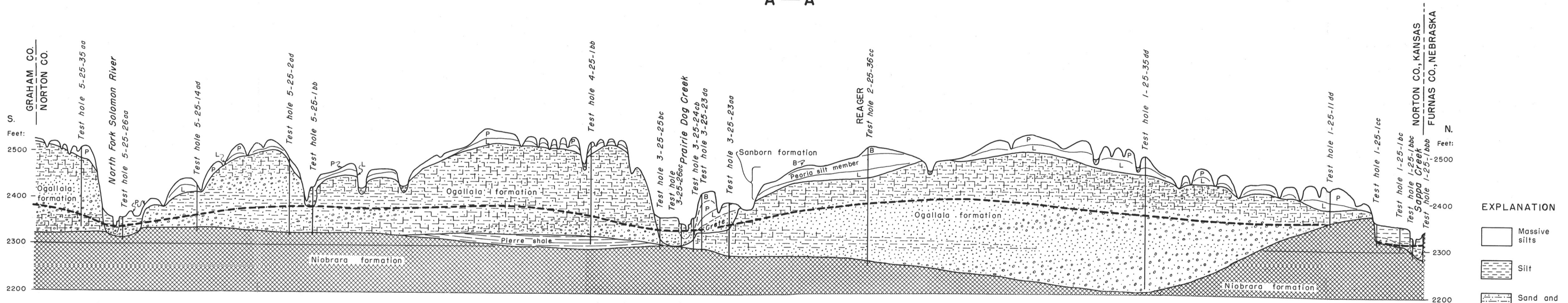
By John C. Frye and A.R. Leonard, 1948

State Geological Survey
of Kansas

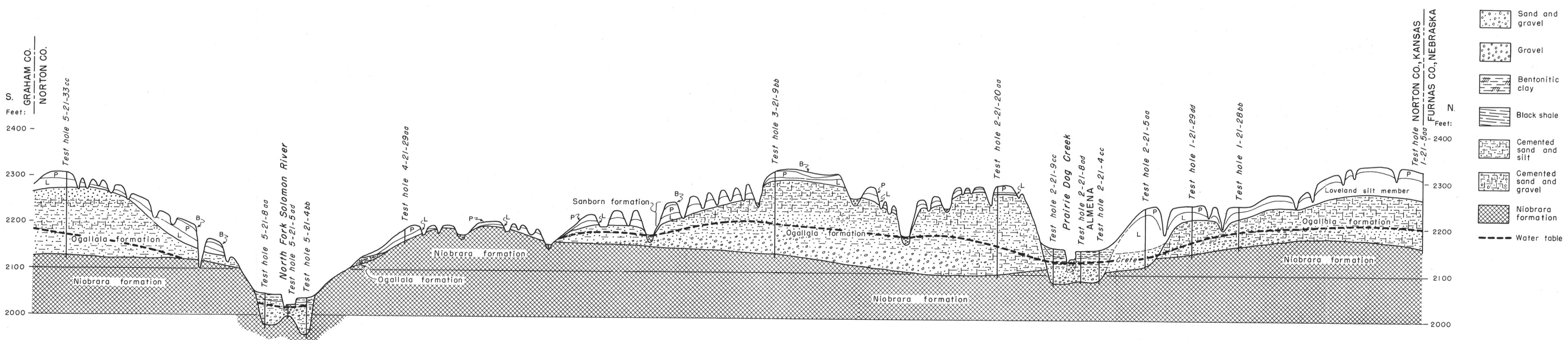
Bulletin 81
Plate 3



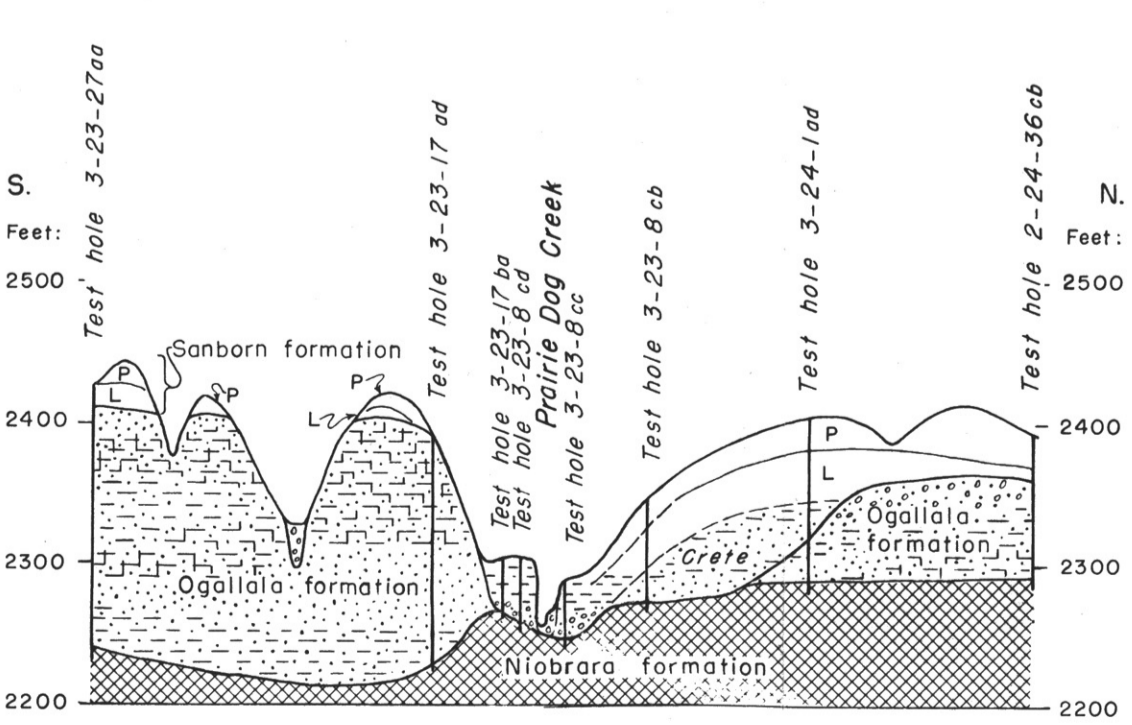
A—A'



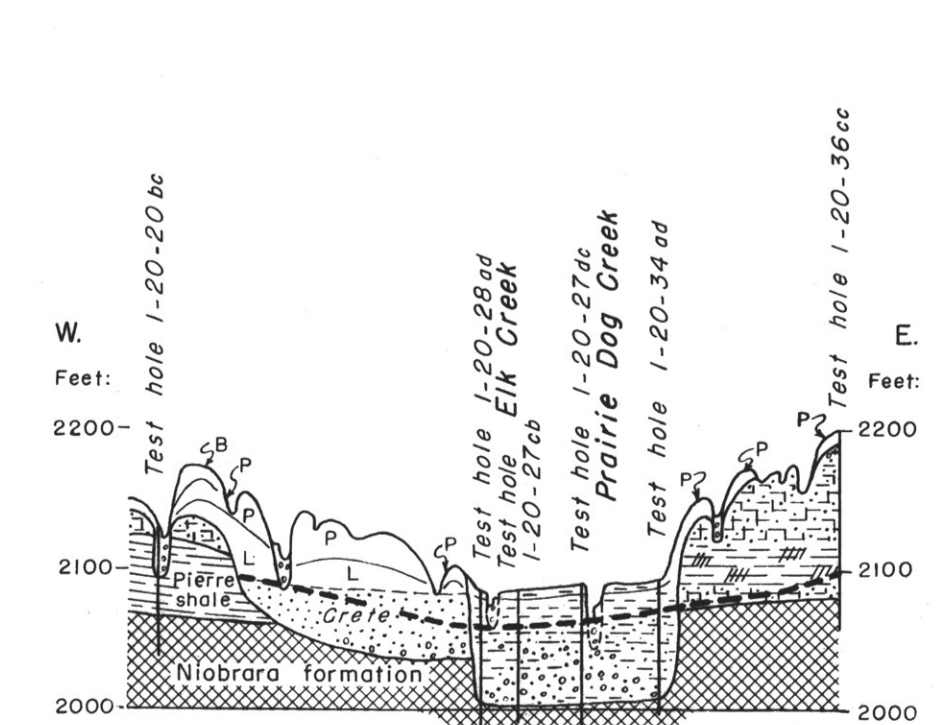
B—B'



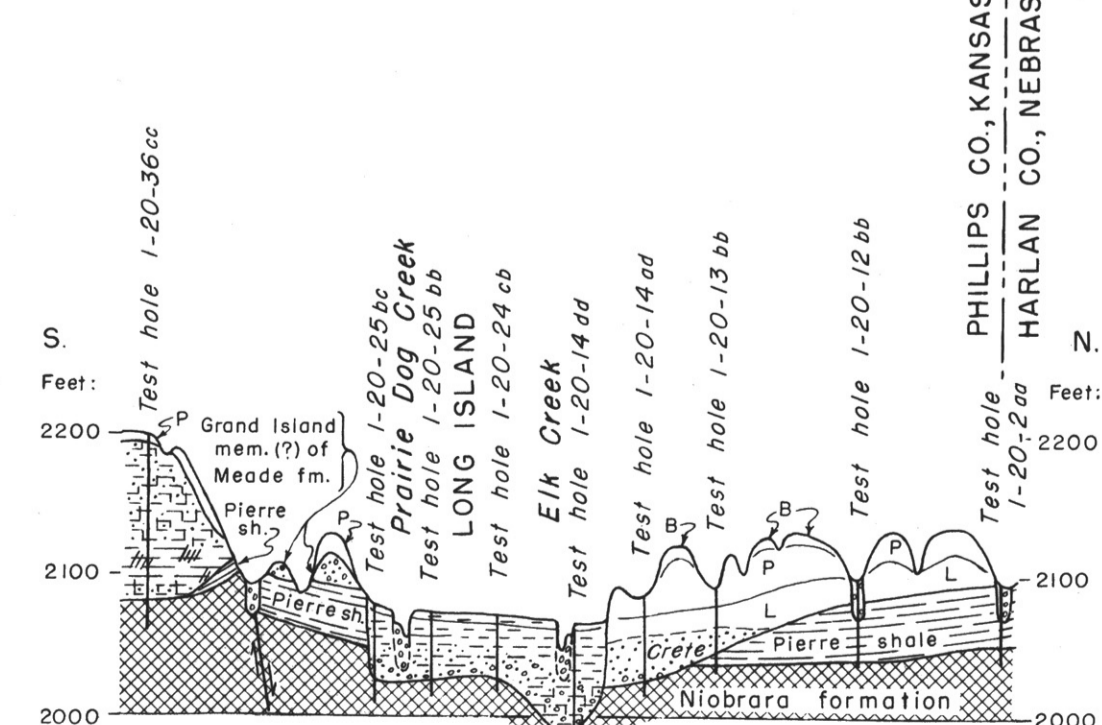
C—C'



D—D'



E—E'



F—F'

- EXPLANATION**
- Massive silts
 - Silt
 - Sand and silt
 - Sand
 - Sand and gravel
 - Gravel
 - Bentonitic clay
 - Black shale
 - Cemented sand and silt
 - Cemented sand and gravel
 - Niobrara formation
 - Water table

