

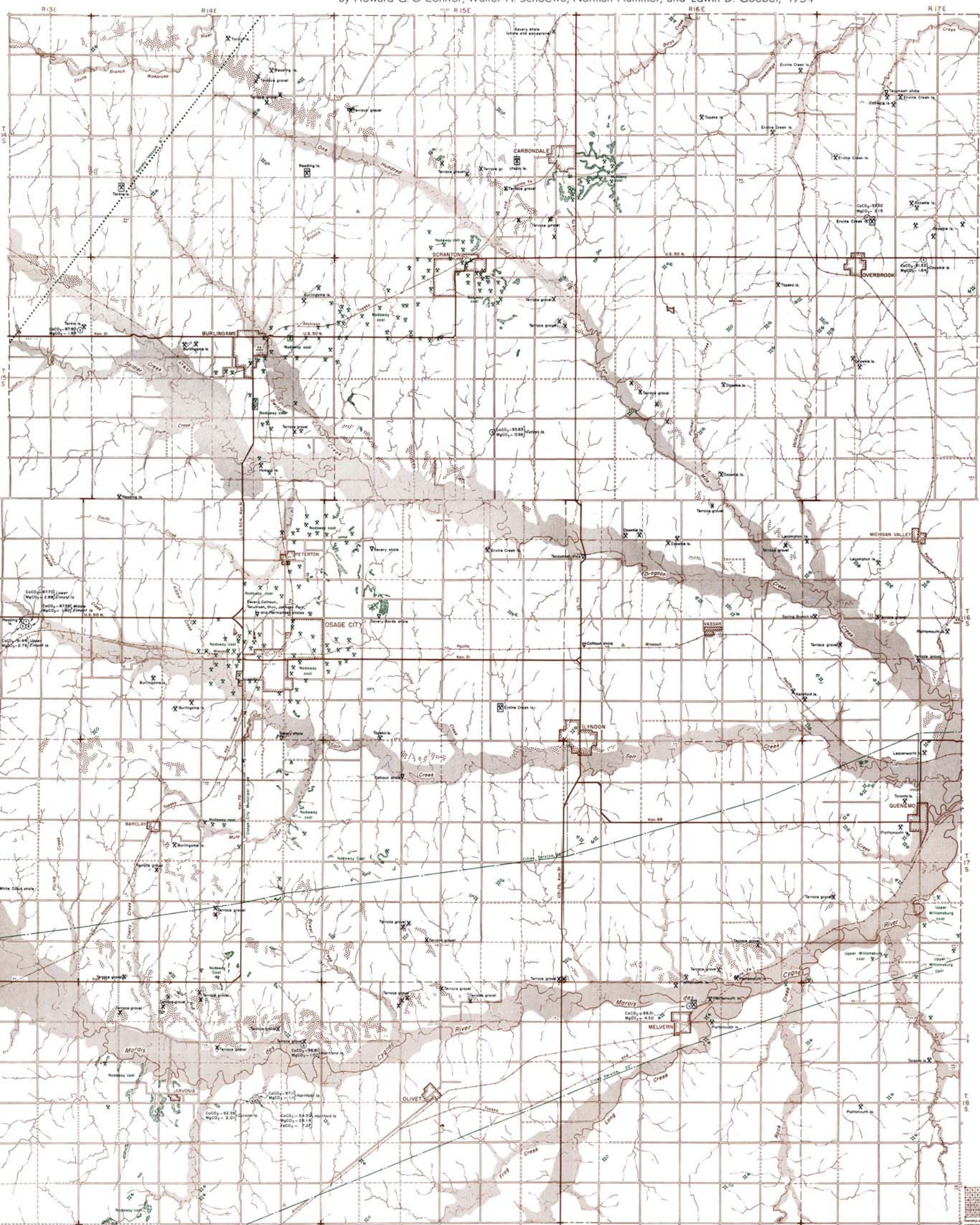
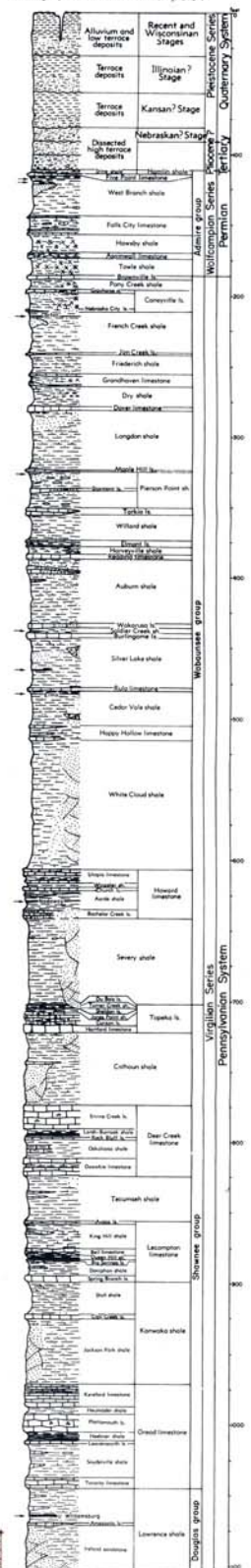
By Howard G. O'Connor, Walter H. Schoewe, Norman Plummer, and Edwin D. Goebel, 1954

EXPLANATION

MINERAL FUELS DATA

- Oil and Gas**
- ◇ Dry hole
 - ✱ Abandoned gas well
 - ✱ Location indefinite
 - Products line
 - Gas line
- Coal**
- ✱ Coal mine (shaft)
 - ⊠ Active coal strip pit
 - ⊠ Active coal mine
- OTHER NONMETALLIC MINERAL RESOURCES**
- ✱ Sand and gravel pit
 - ✱ Limestone quarry
 - ✱ Terrace gravel
 - ✱ Alluvium
- Symbols for total depths of wells**
- ⊠ Pennsylvanian (Undr.)
 - ⊠ Mississippian
 - ⊠ Ordovician (Undr.)
 - ⊠ Arbuckle (Undr.)
 - ⊠ Pre-Cambrian
- Limestone sample locality, numbers refer to chemical analyses, Table I**
- ⊠ Clay or shale sample location
 - ⊠ Commercial pit or quarry

Generalized section of rocks showing thickness, lithology, and beds associated with the mined, quarried, or sampled mineral deposits of Osage County. Ceramic and chemical test data are given in Tables 1, 2, and 3 and areal extent of stratigraphic units is shown on plate 1.



R 13 E R 14 E R 15 E R 16 E R 17 E
 T 14 S T 15 S T 16 S T 17 S T 18 S
 County boundary Township boundary Section line Federal or State highway Graded road Ungraded road Railroad Perennial stream Intermittent stream Lake or pond Dam Monumented benchmark with spirit level elevation
 Scale in miles

Drafting by Jeanne Turk