

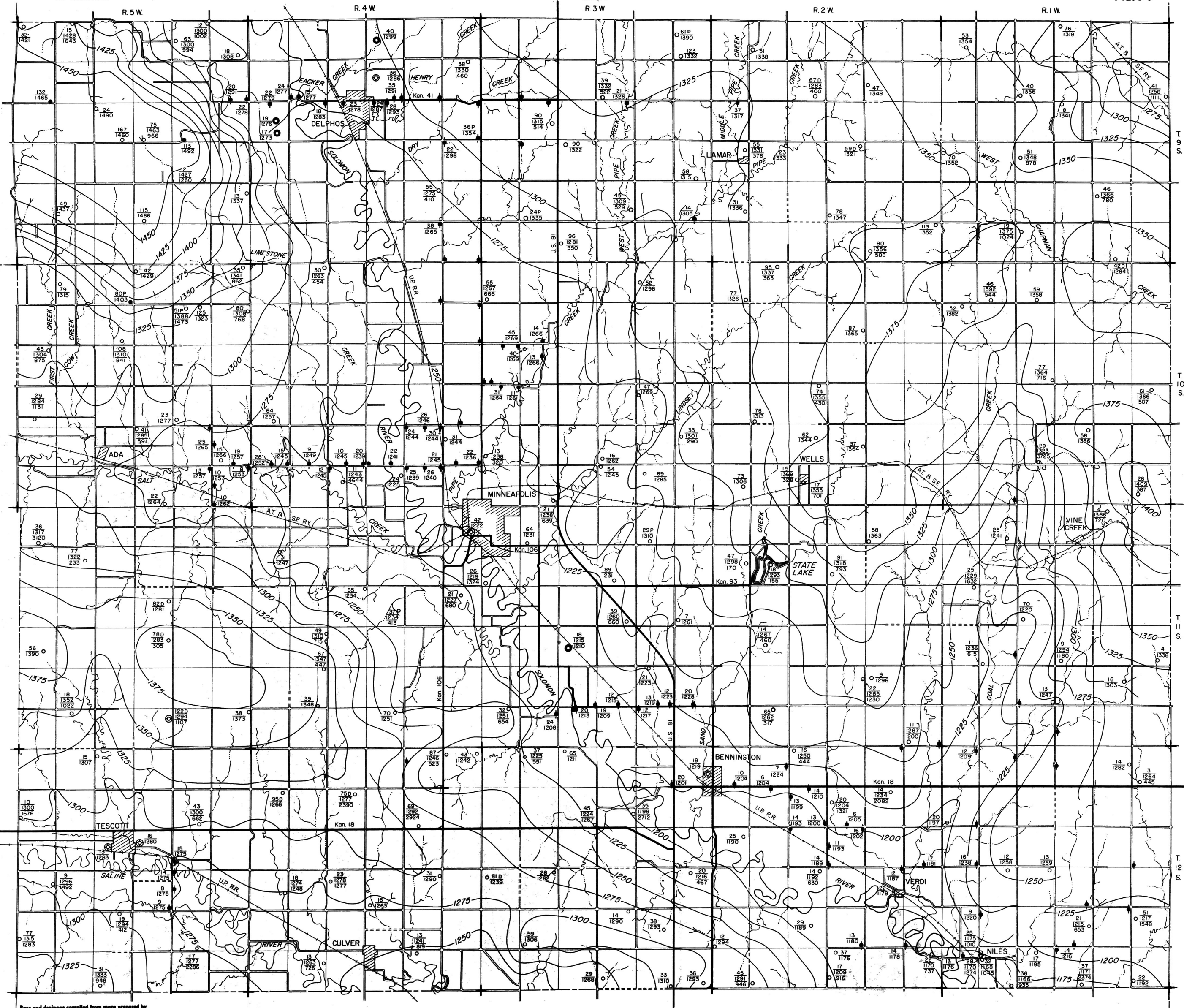
# MAP OF OTTAWA COUNTY, KANSAS

Showing piezometric contours, location of test holes and inventoried wells,  
depth to water, and specific conductance of water samples

State Geological Survey  
of Kansas

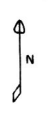
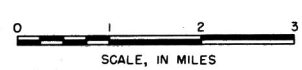
By Leslie E. Mack  
1959

Bulletin 154  
Plate 7



## EXPLANATION

- Domestic, stock, school, or cemetery well
  - ◆ Augered test hole
  - Drilled test hole
  - ⊙ Irrigation well
  - ⊕ Public supply well
  - ⊗ Industrial well
- Upper number is depth to water below land surface, in feet. Middle number is altitude of piezometric surface. Lower number is specific conductance of water, in micromhos. If only two numbers are given, specific conductance is absent.
- $\frac{51}{1238}$   
480
- Piezometric contour
  - Contour interval 25 feet
  - Datum is mean sea level
  - Federal or state highway
  - Township or county road
  - Section line (no road)
  - Railroad
  - Perennial stream
  - Intermittent stream



Base and drainage compiled from maps prepared by the State Highway Commission of Kansas 1957