

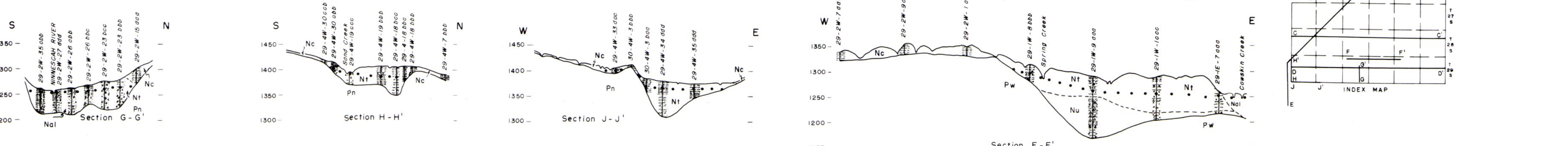
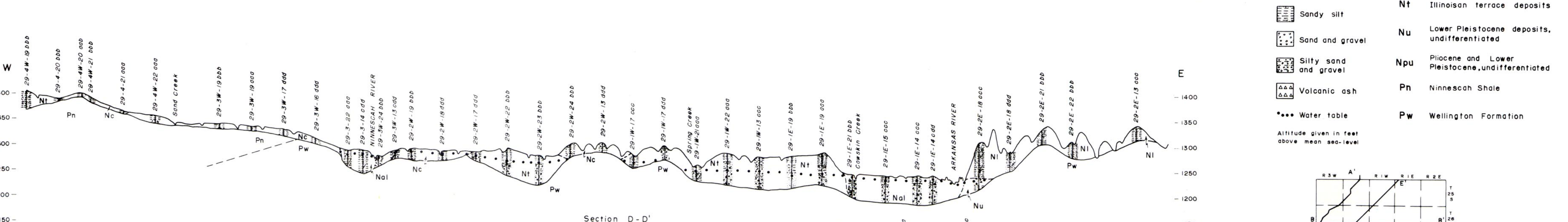
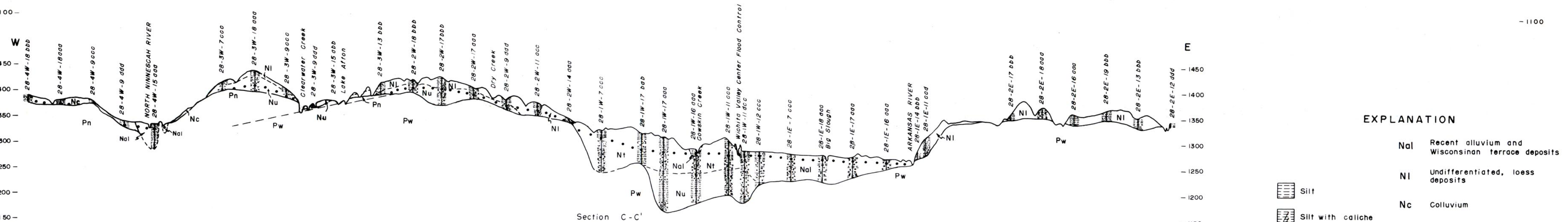
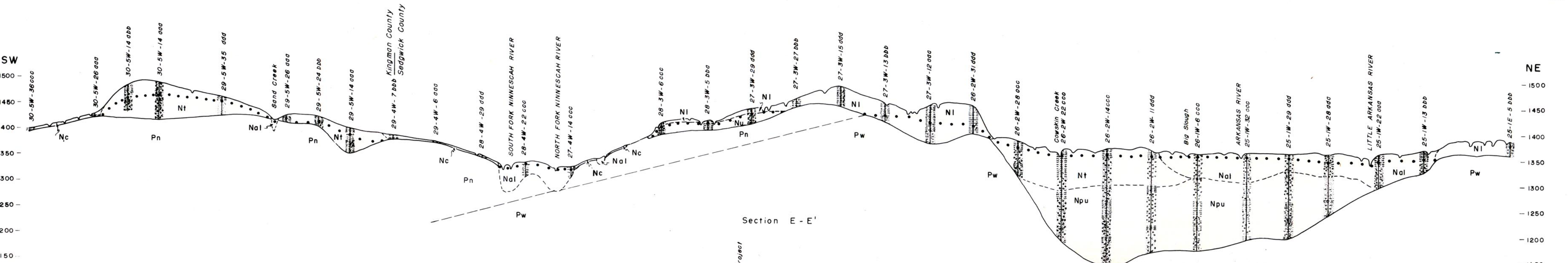
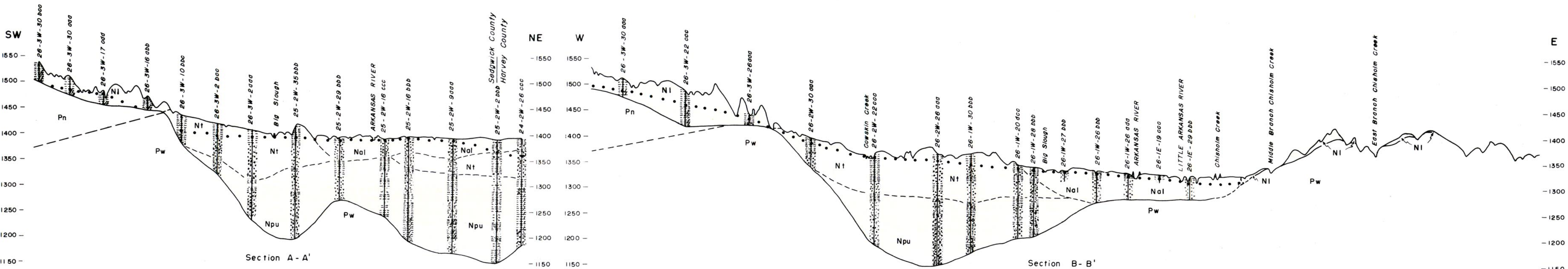
GEOLOGIC CROSS SECTIONS OF SEDGWICK COUNTY, KANSAS

1965

by Charles W. Lane and Don E. Miller

Bulletin 176
Plate 2

State Geological Survey
of Kansas



EXPLANATION

	Nal	Recent alluvium and Wisconsinan terrace deposits
	Ni	Undifferentiated, loess deposits
	Nc	Colluvium
	Nt	Illinoisan terrace deposits
	Nu	Lower Pleistocene deposits, undifferentiated
	Npu	Pliocene and Lower Pleistocene, undifferentiated
	Pn	Ninnescah Shale
	Pw	Wellington Formation

Altitude given in feet above mean sea-level

