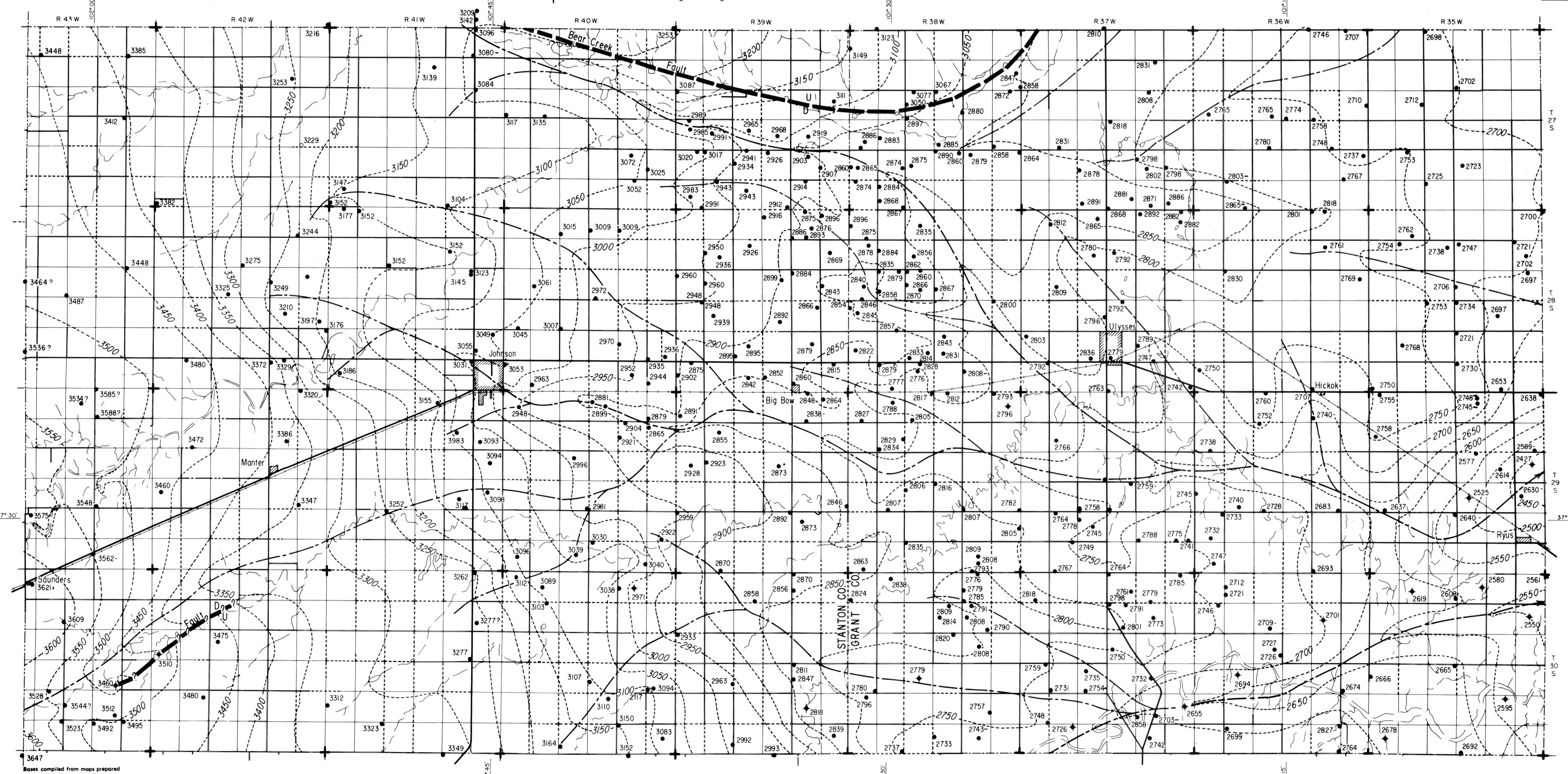


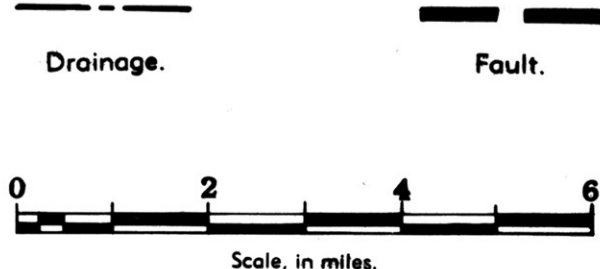
A. SHOWING CONTOURS ON THE BEDROCK SURFACE AND LOCATIONS OF GEOLOGIC CROSS SECTIONS.

- 3235 Altitude of bedrock surface in feet above mean sea level from test holes.
- 3495 - Well not drilled to bedrock.
- ◆ 3510 Altitude from logs of oil or gas tests.
- - - 3600 Contours on bedrock surface; contour interval, 50 feet.
- E - E' Location of geologic cross section.



B. SHOWING CONTOURS ON THE UPPER SURFACE OF THE OGALLALA FORMATION.

- 3096 Altitude of top of Ogallala surface in feet above mean sea level.
- 3544 ? Reported data. Not positive that top of Ogallala was encountered at indicated altitude.
- 3585 - Well not drilled to base of Pleistocene deposits.
- ◆ 2971 Altitude from logs of oil or gas tests.
- - - 3150 Contours on eroded surface; contour interval, 50 feet.



Bases compiled from maps prepared by the Soil Conservation Service