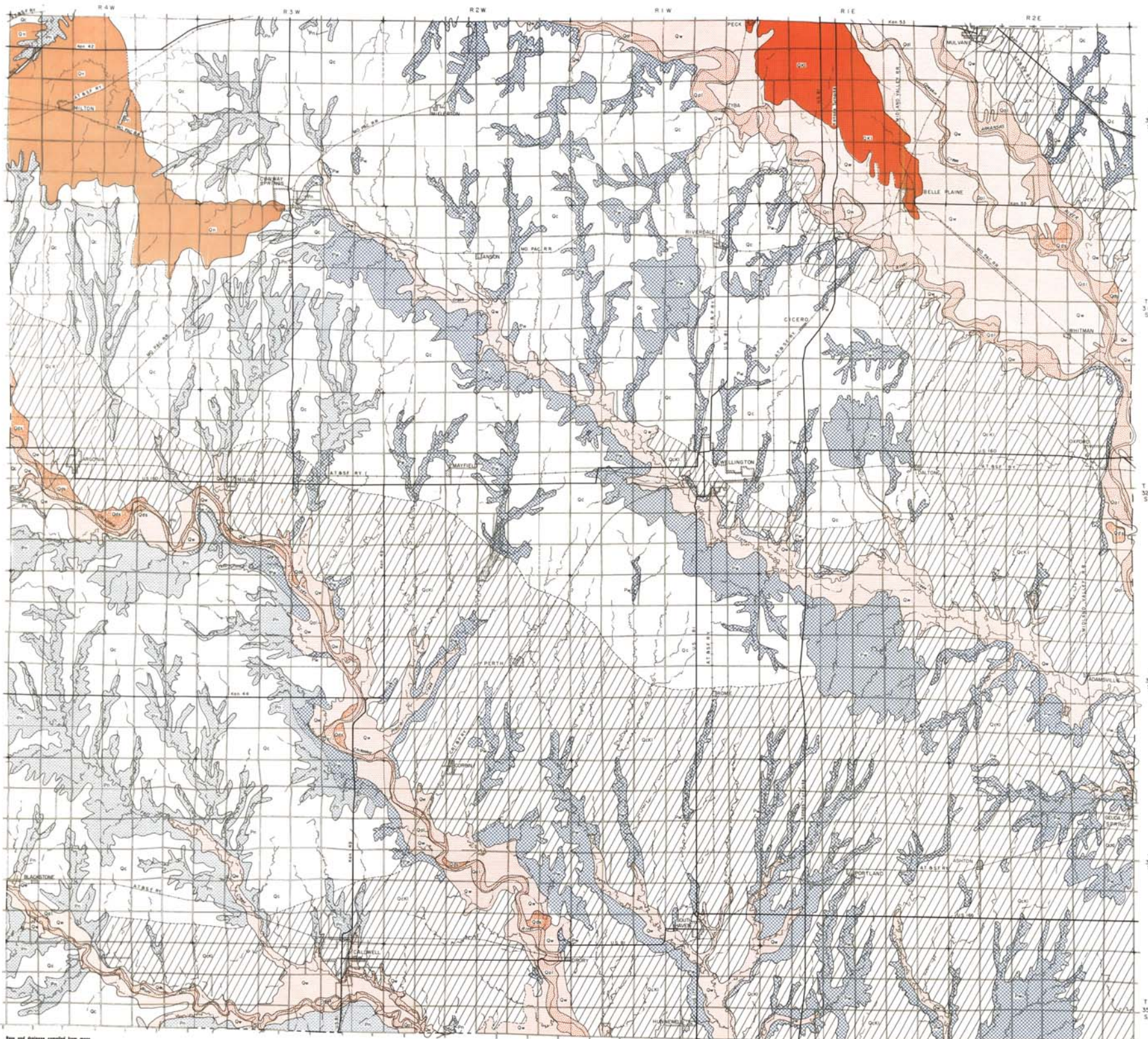


# AREAL GEOLOGY OF SUMNER COUNTY, KANSAS

State Geological Survey  
of Kansas

by Kenneth L. Walters  
1957

Bulletin 151  
Plate 1



## EXPLANATION

PLEISTOCENE	Recent	Q <sub>1</sub>	Dune sand	QUATERNARY
	Recent	Q <sub>2</sub>	Sand, medium and fine, contains some silt. Generally above the water table; does not yield water to wells.	
	Wisconsinan	Q <sub>3</sub>	Alluvium	
	Wisconsinan	Q <sub>4</sub>	Terrace deposits	
KANSAS AND ILLINOISAN	Kansan and Illinoian	Q <sub>5</sub>	Terrace deposits	QUATERNARY
	Kansan and Illinoian	Q <sub>6</sub>	Fairly sorted sand and gravel; contains red lenses of silt and clay. Yields large quantities of water to wells.	
NEBRASKAN	Nebraskan	Q <sub>7</sub>	Terrace deposits	PERMIAN
	Nebraskan	Q <sub>8</sub>	Clay, medium to coarse calcareous sand. Yields moderate quantities of water to wells.	
	Nebraskan	Q <sub>9</sub>	Hinnersloh Shale	
	Nebraskan	Q <sub>10</sub>	Wellington Formation	
ILLINOISAN TO RECENT	Illinoian to Recent	Q <sub>11</sub>	Colluvium or pediment deposits	PLEISTOCENE
	Illinoian to Recent	Q <sub>12</sub>	Silt and clay; contains minor amounts of sand and gravel. Does not yield appreciable quantities of water to wells.	
KANSAN TO RECENT	Kansan to Recent	Q <sub>13</sub>	Colluvium or pediment deposits underlain by Kansan or Illinoian terrace deposits	PLEISTOCENE
	Kansan to Recent	Q <sub>14</sub>	Silt and clay; contains minor amounts of sand and gravel underlain by discontinuous Kansan or Illinoian terrace deposits. Yields moderate supplies of water to wells locally.	

—	Federal or state highway
—	Graded road
—	Railroad
—	Ungraded road
—	County line (no road)
—	State line (no road)
—	Section line (no road)
—	Intermittent stream

Scale, in miles

Base and outlines compiled from maps prepared by the Soil Conservation Service.