

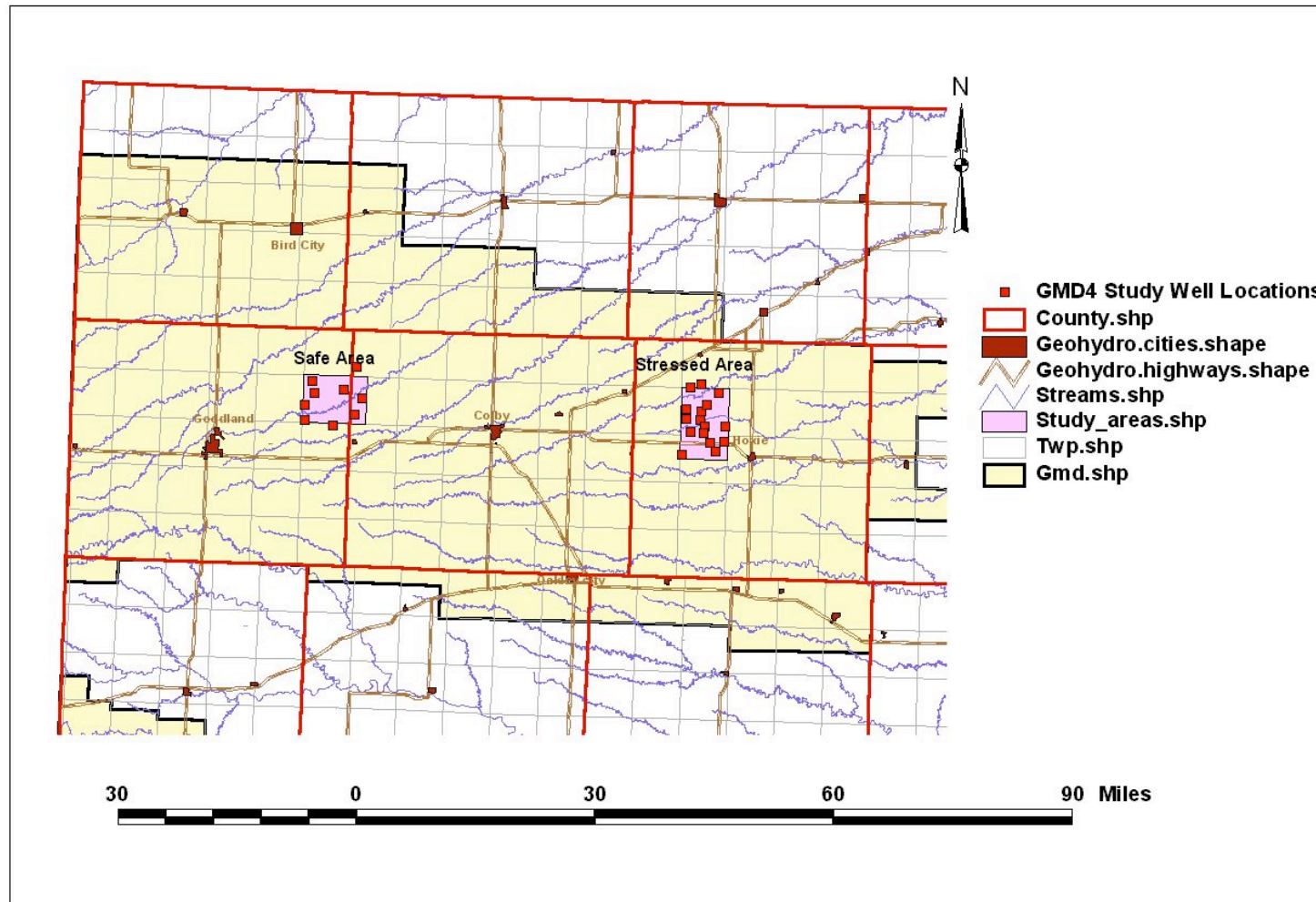
GMD-4 Study Water Level Results

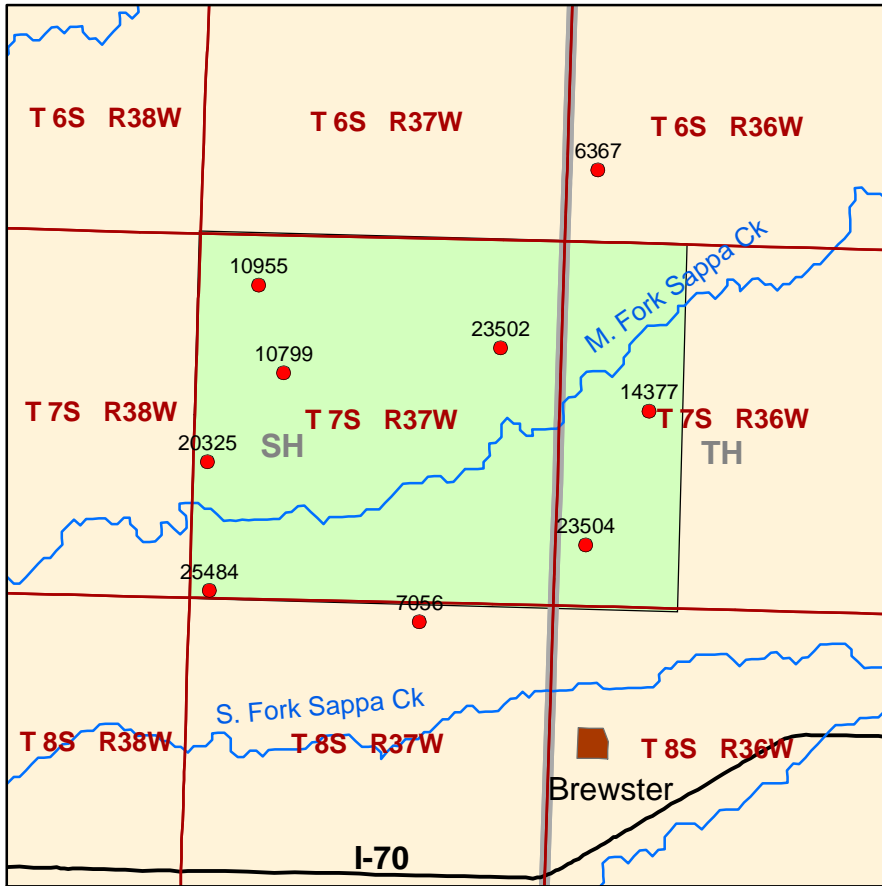
July 2003

- 1. Study areas**
- 2. Well locations**
- 3. Continuous recorder results (all data)**
- 4. Average change Sherman and Sheridan Counties**
- 5. Barometric and average daily change (2 pages)**
- 6. Sherman water level change**
- 7. Sherman Co. hydrographs**
- 8. Sheridan Co. water level change**
- 9. Sheridan Co. hydrographs (2 pages)**

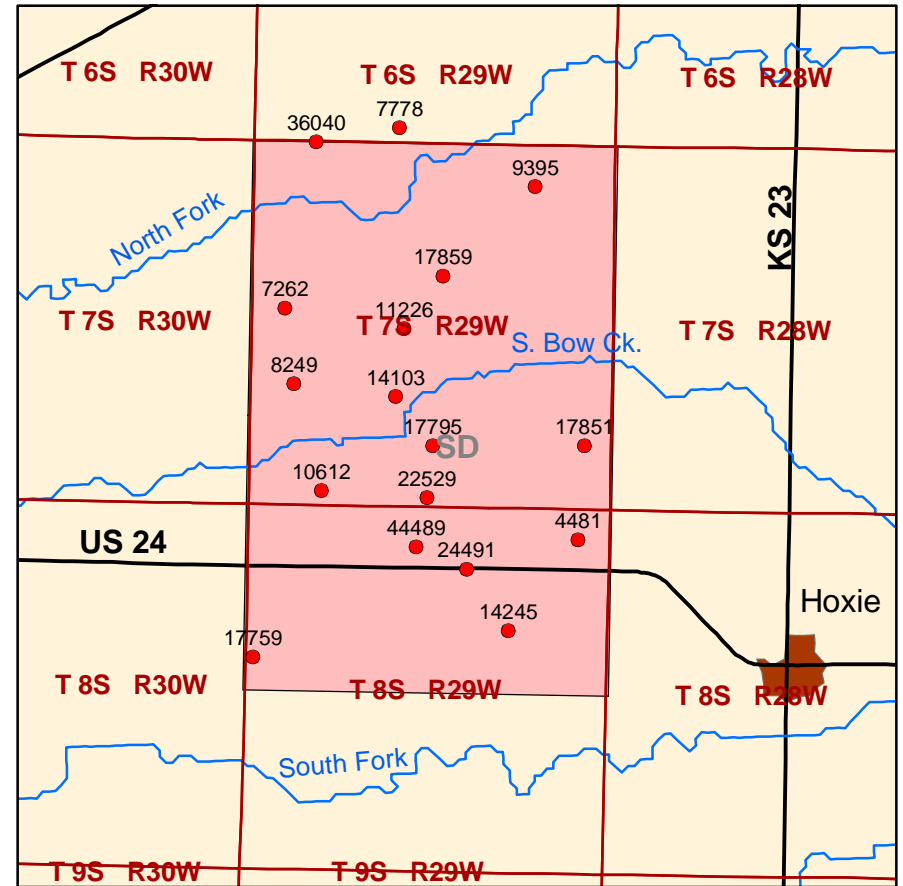
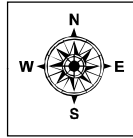
GMD 4 Study Areas

GMD 4 Study Areas





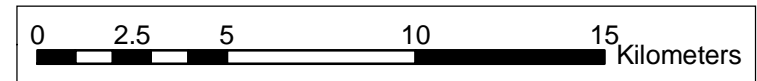
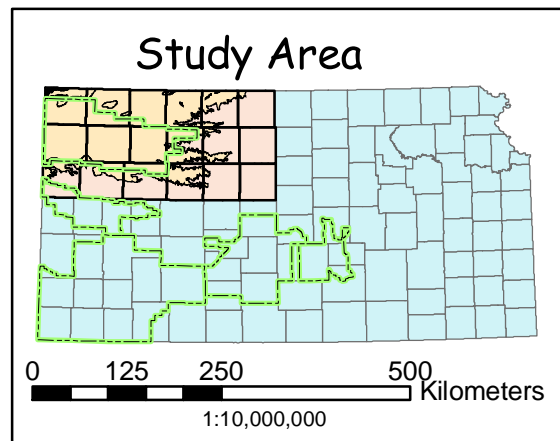
Safe Area



Stressed Area

Legend

- Study well & WR No.
- Highways
- Stream
- Town
- ▭ GMD Boundary
- ▭ County Boundary
- ▭ General Study Area
- Study Area
 - ▭ Safe area
 - ▭ Stressed area
 - ▭ PLSS_Townships



1:200,000

GARY R. HECOX DISSERTATION
University of Kansas

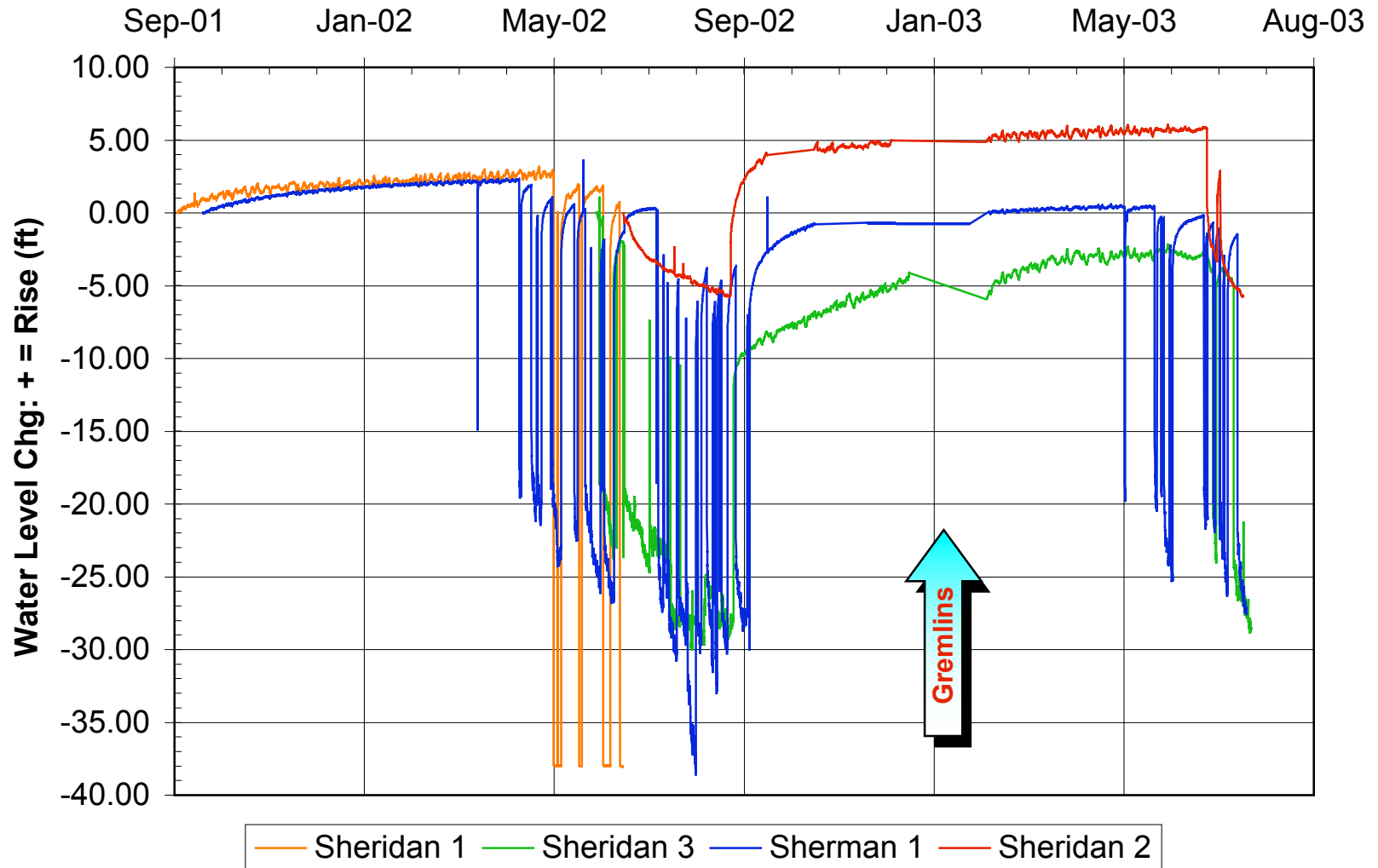
GMD-4 Detailed Study Areas

Drawn by	Date	File Name	Projection	Scale
grh	10/02/02	GMD4 study areas.mxd	UTM Zone 14 NAD 1983	1:200,000

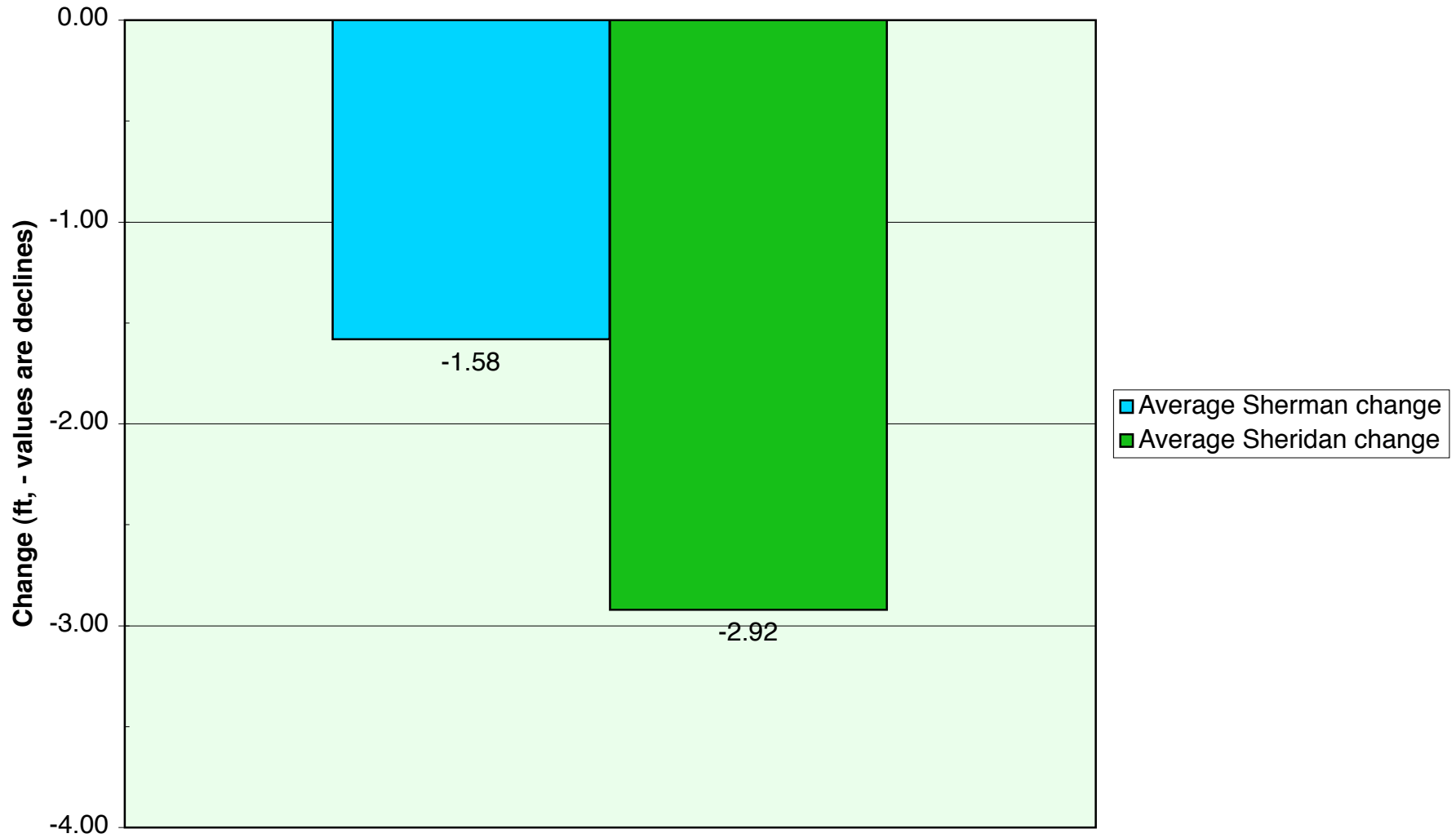
Continuous Water Level Recorder Results

GMD-4 Continuous Recorder Data

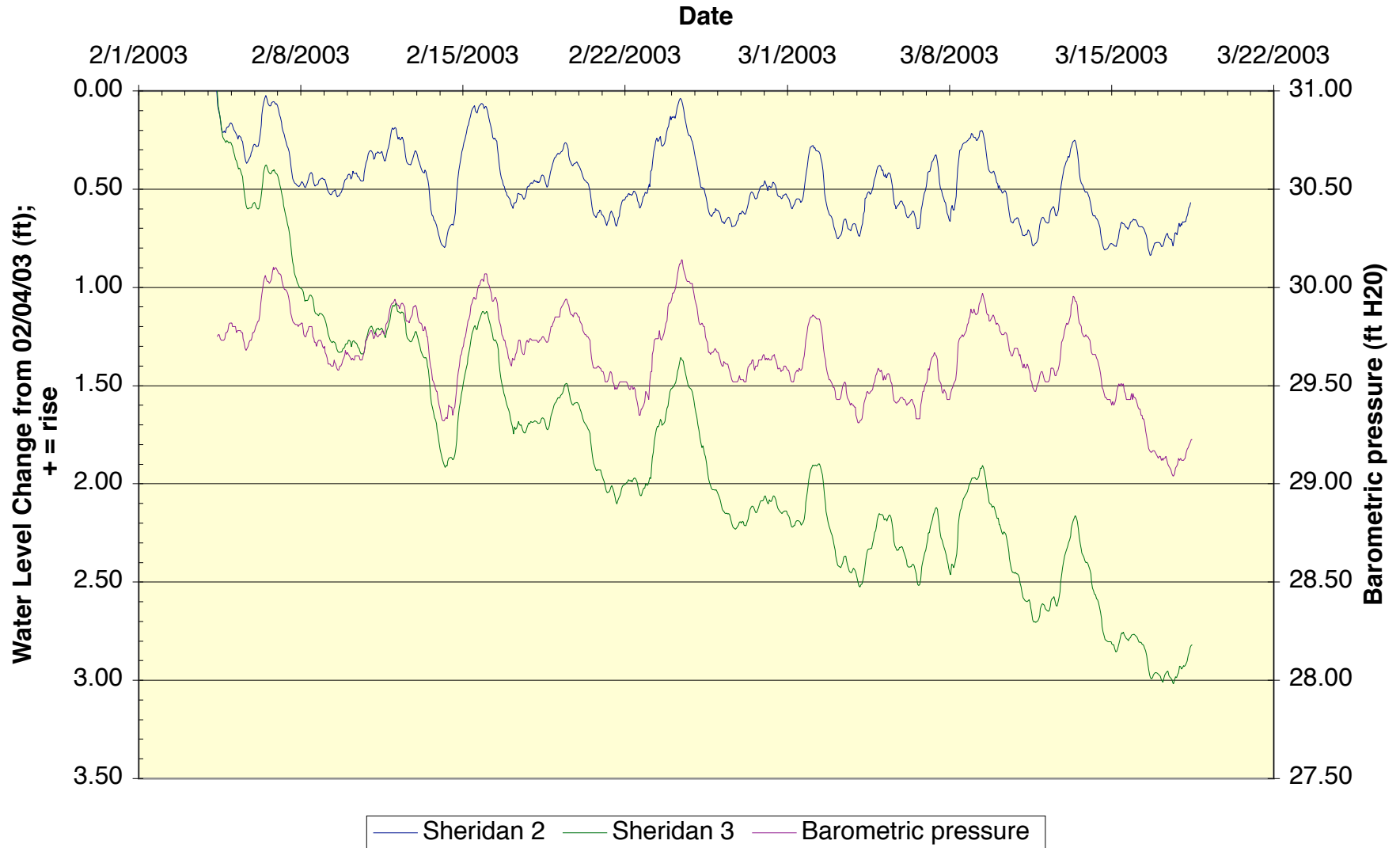
07/23/03



Average Water Level Change May 2002 to April/May 2003

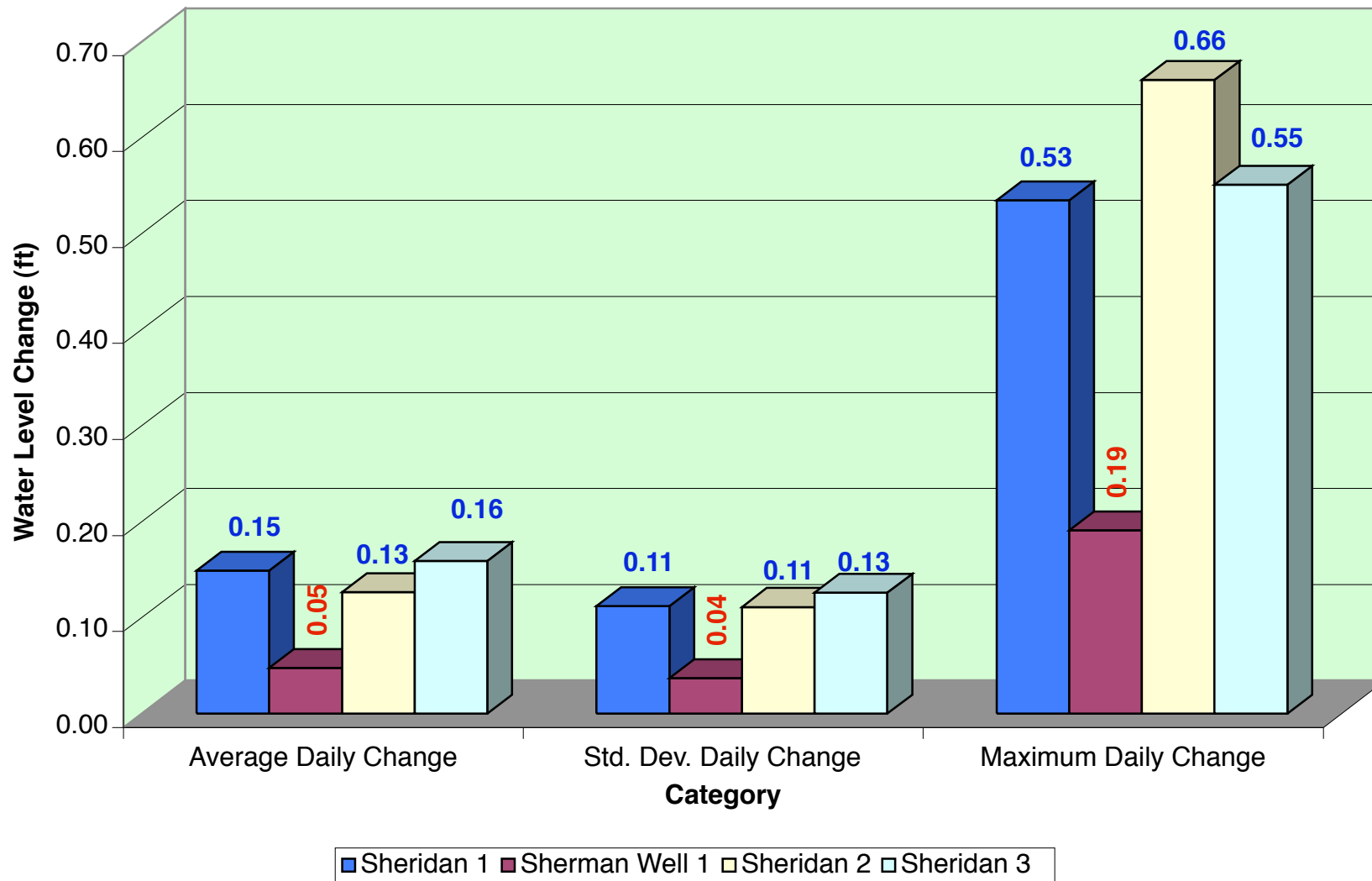


Barometric Pressure and Water Levels Sheridan Co.



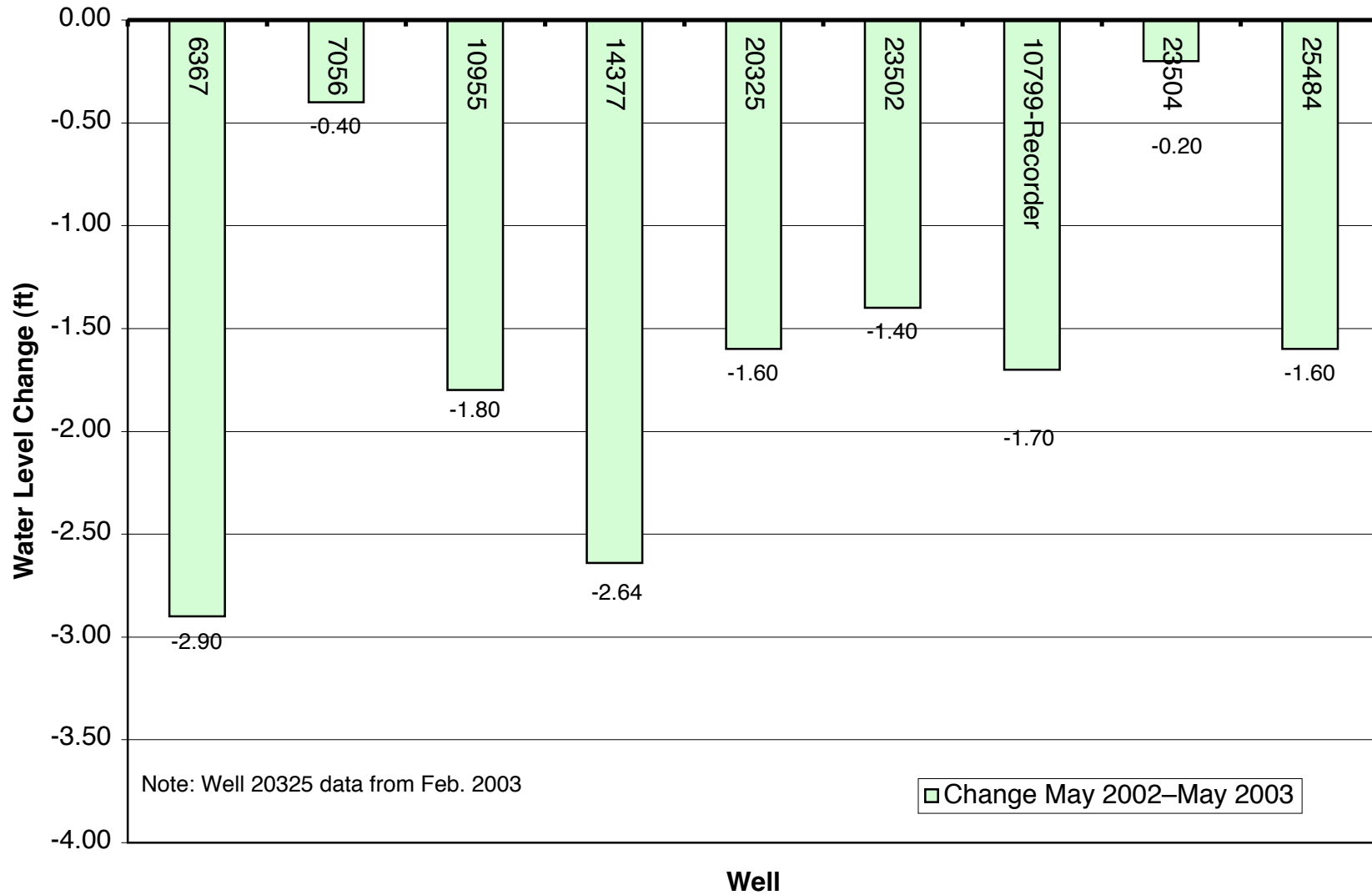
Daily *Nonpumping* Water Level Changes

(Absolute Value (Today's water level - Yesterday's water level))



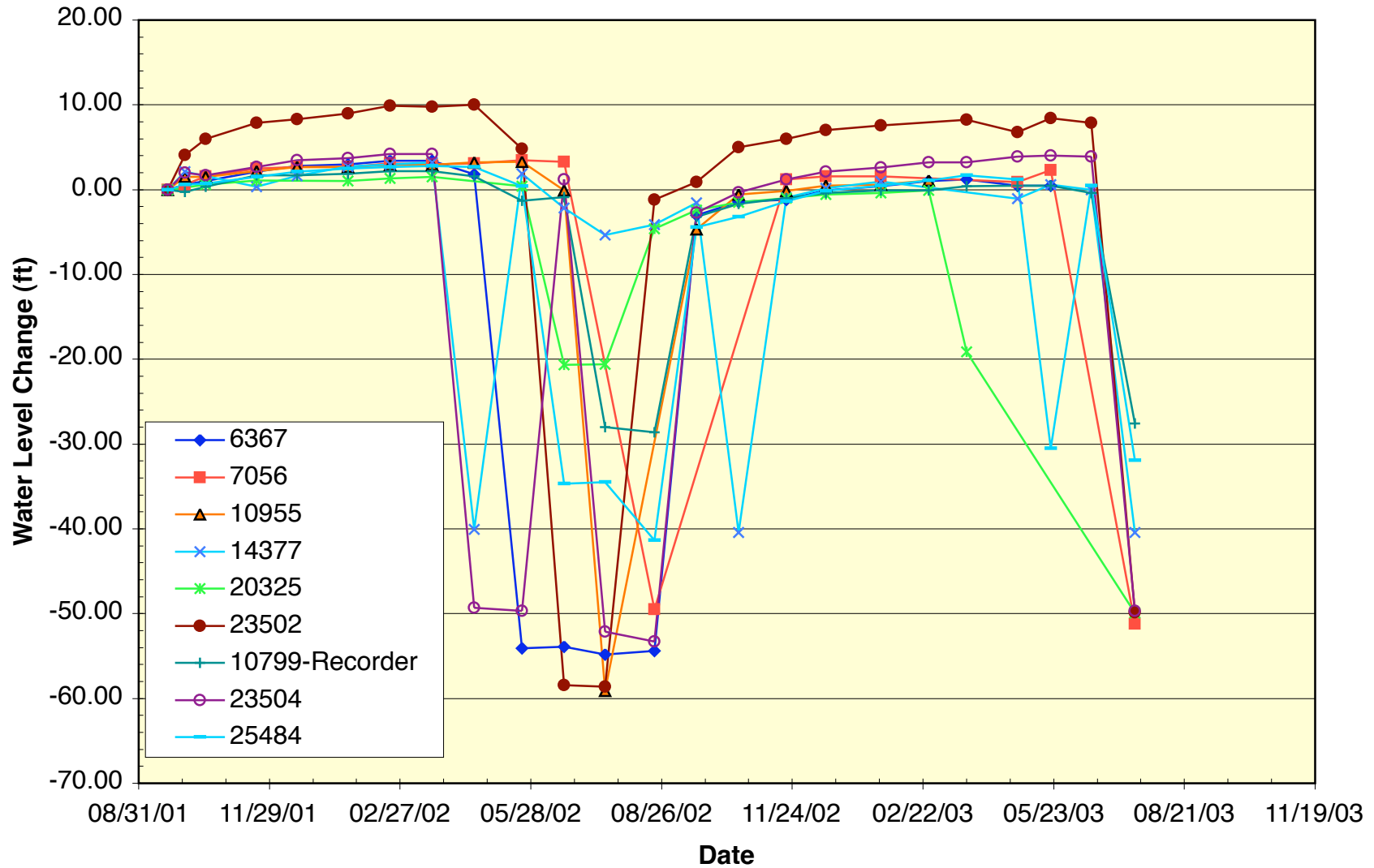
GMD 4 Manual Water Level Measurement Results

Sherman Co. Net Water Level Change May 2002 to April/May 2003



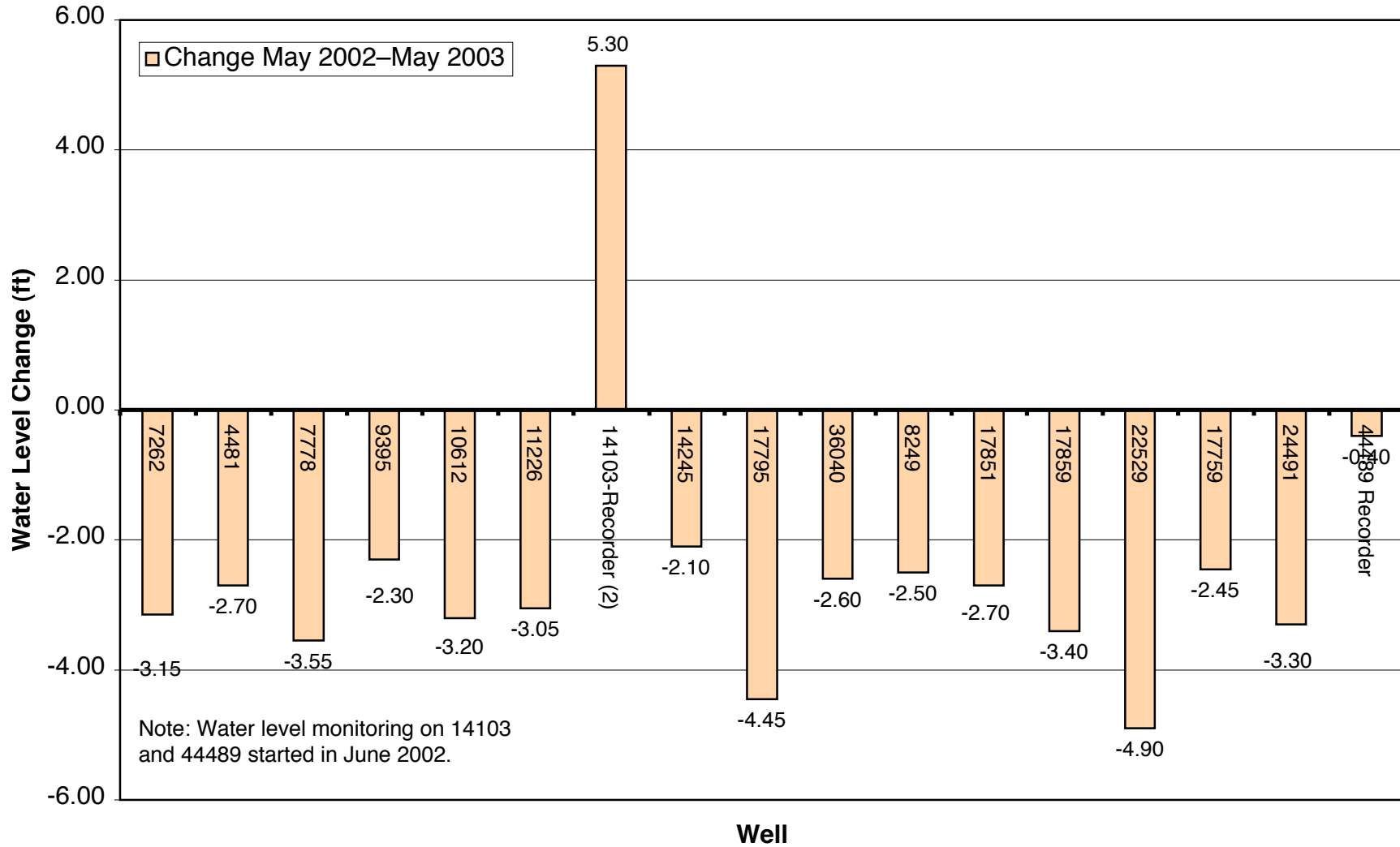
GMD 4 Manual Water Level Measurement Results

Sherman Co. Water Level Changes



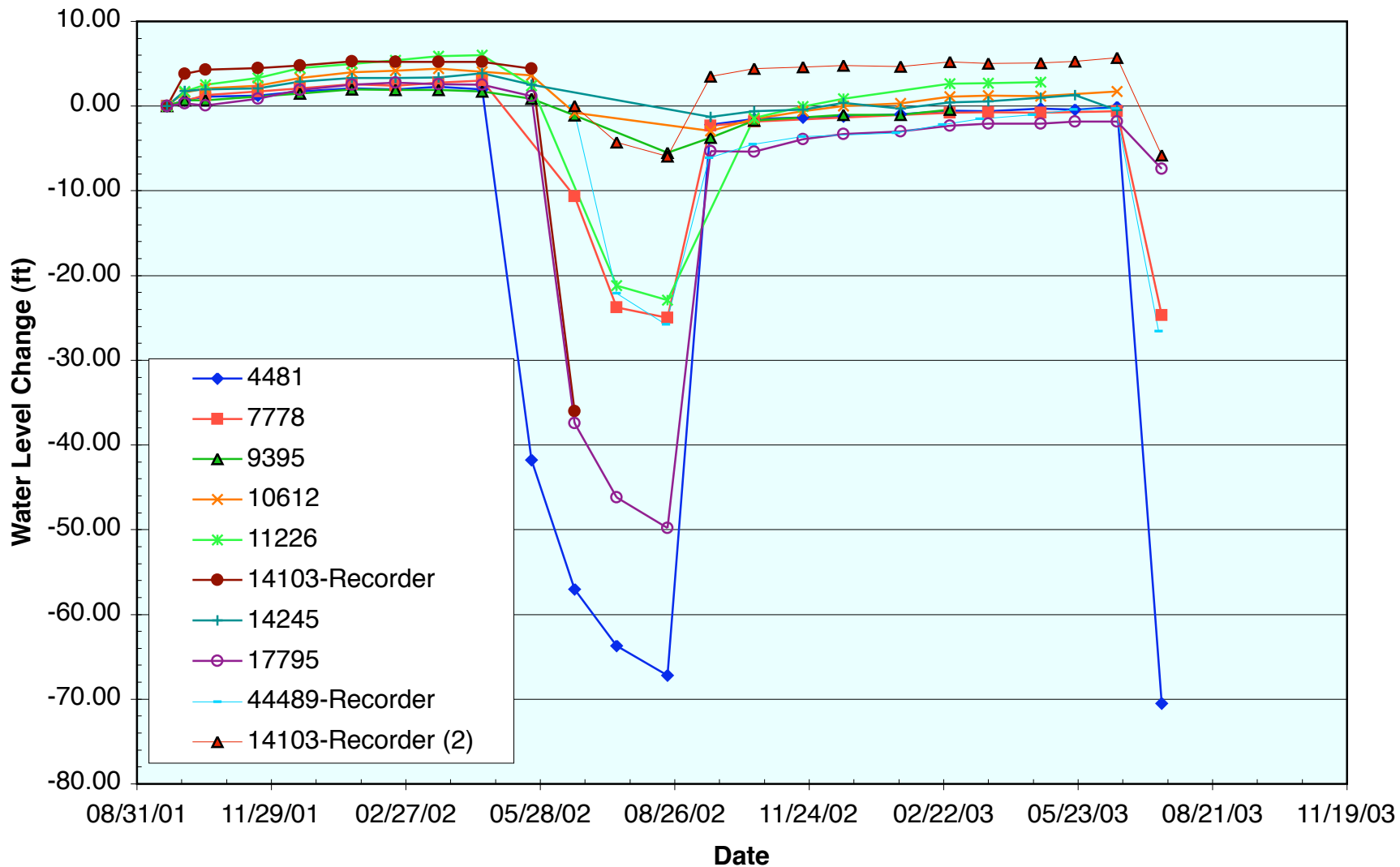
GMD 4 Manual Water Level Measurement Results

**Sheridan Co. Net Water Level Changes
May 2002 to April/May 2003**



GMD 4 Manual Water Level Measurement Results

Sheridan Co. Water Level Change 1



GMD 4 Manual Water Level Measurement Results

Sheridan Co. Water Level Change 2

