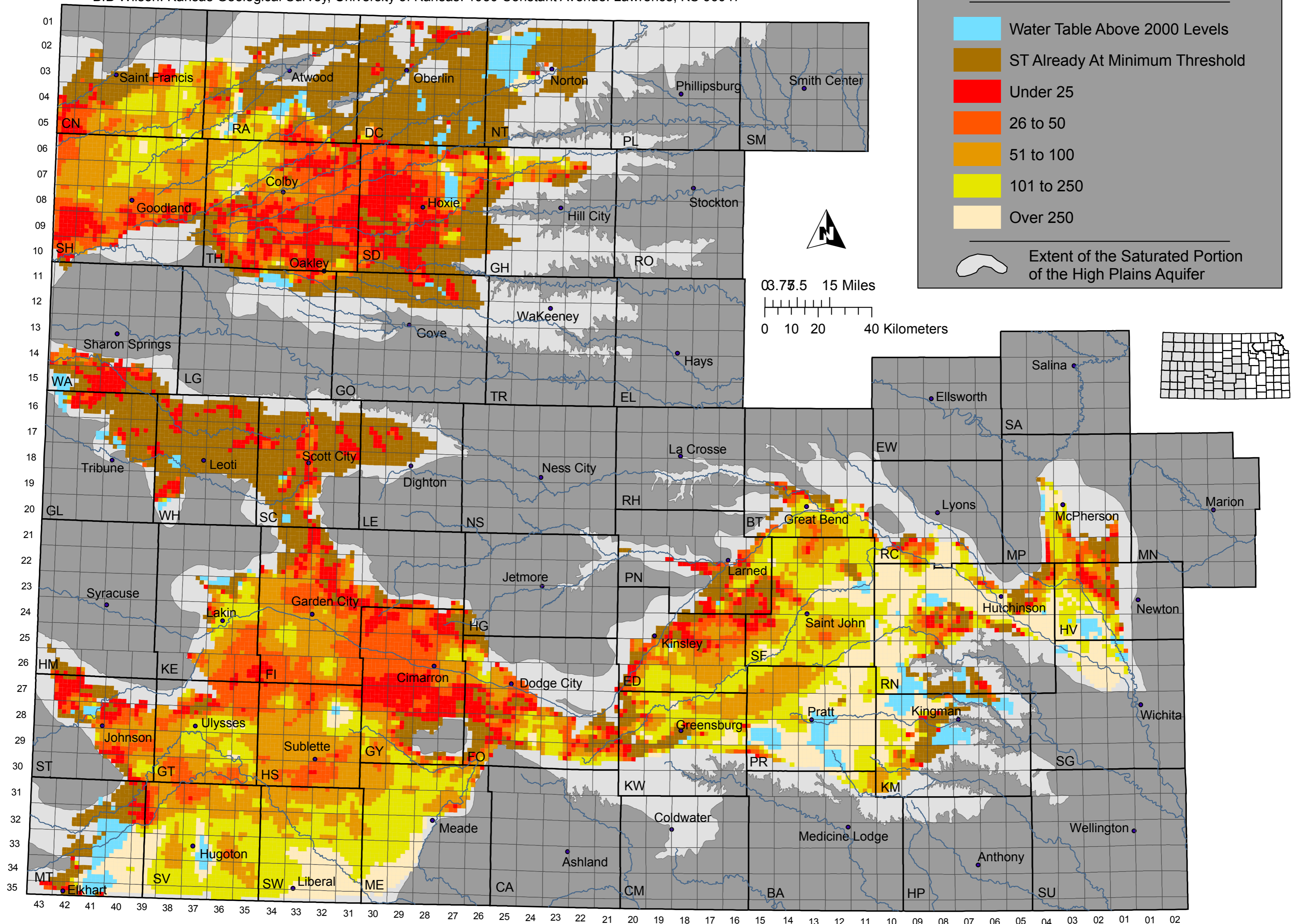


Estimated Usable Lifetime for the High Plains Aquifer in Kansas

(Based on ground-water trends from 2000 to 2005 and the minimum saturated thickness required to support 400 gpm well yields under a 90 day pumping period with wells on 1/4 section)

B.B Wilson. Kansas Geological Survey, University of Kansas. 1930 Constant Avenue. Lawrence, KS 66047



Kansas Geological Survey
 The University of Kansas
 1930 Constant Avenue
 Lawrence, Kansas 66047-3726
 (785) 864-3965 <http://www.kgs.ku.edu>

KGS Open-file Report 2005-8.

The Kansas Geological Survey made a conscientious effort to ensure the accuracy of this report. However, the Kansas Geological Survey does not guarantee this document to be completely free from errors or inaccuracies and disclaims any responsibility or liability for interpretations based on data used in the production of this document or decisions based thereon. This report is intended to make results of research available at the earliest possible date, but is not intended to constitute final or formal publication.

Ground-water data obtained from the Water Information Storage and Retrieval Database (WIZARD) at <http://www.kgs.ku.edu/Magellan/WaterLevels/index.html>. Minimum ST threshold estimates based on results in KGS OFR 2002-25C which can be obtained at http://www.kgs.ku.edu/HighPlains/OHP/2002_25C.pdf.

Projection: Lambert Conformal Conic
 Standard Parallels: 33 and 45 degrees North
 Central Meridian: -98.25 degrees West
 Latitude of Origin: 36 degrees North

April 22, 2005