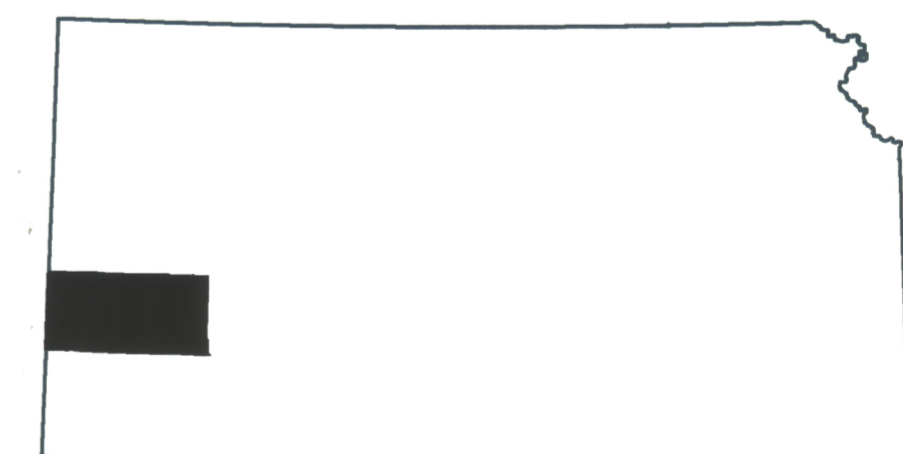
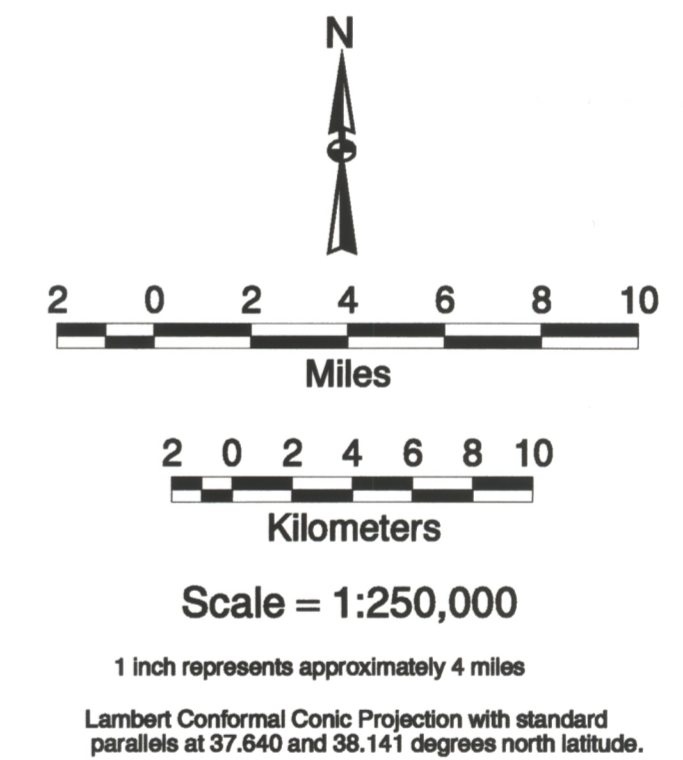
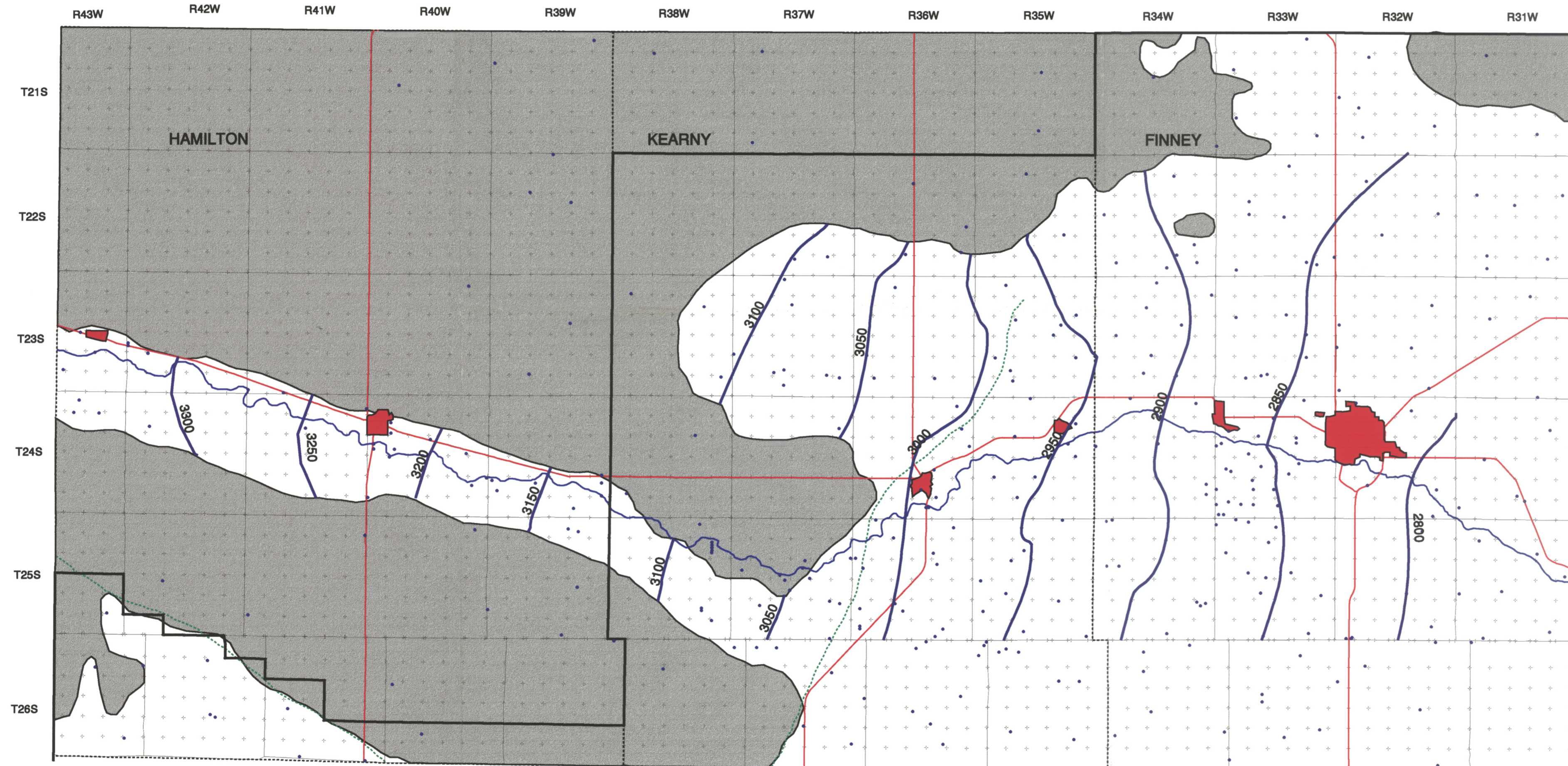


ELEVATION OF PREDEVELOPMENT WATER LEVEL SURFACE FOR THE HIGH PLAINS AQUIFER IN THE GARDEN CITY STUDY AREA

Legend

- Contour line for water level (elevation in feet)
- Southwest Kansas Groundwater Management District boundary
- County boundary
- Cities
- Highways
- Well locations
- Arkansas River
- Township boundary
- Section corner
- Fault zone
- Boundary of the High Plains Aquifer
- Thinly saturated or nonsaturated areas



Water-level data are from the Kansas Geological Survey, the Division of Water Resources, and Groundwater Management District No.3

Compiled and produced by Mingshu Tsou May, 1996
Kansas Geological Survey

This map has been prepared at the Kansas Geological Survey under a contract entitled "Upper Arkansas River Corridor Study" funded by the Kansas Water Plan through the Kansas Water Office. It is part of a series of map plates created to assist in the assessment of human and environmental influences on salinity migration into freshwater areas.

The Kansas Geological Survey does not guarantee this map to be free from errors or inaccuracies and disclaim any responsibility or liability for interpretations from the map or decisions based thereon. This map is intended to make results of research available at the earliest possible date, but is not intended to constitute final or formal publications.