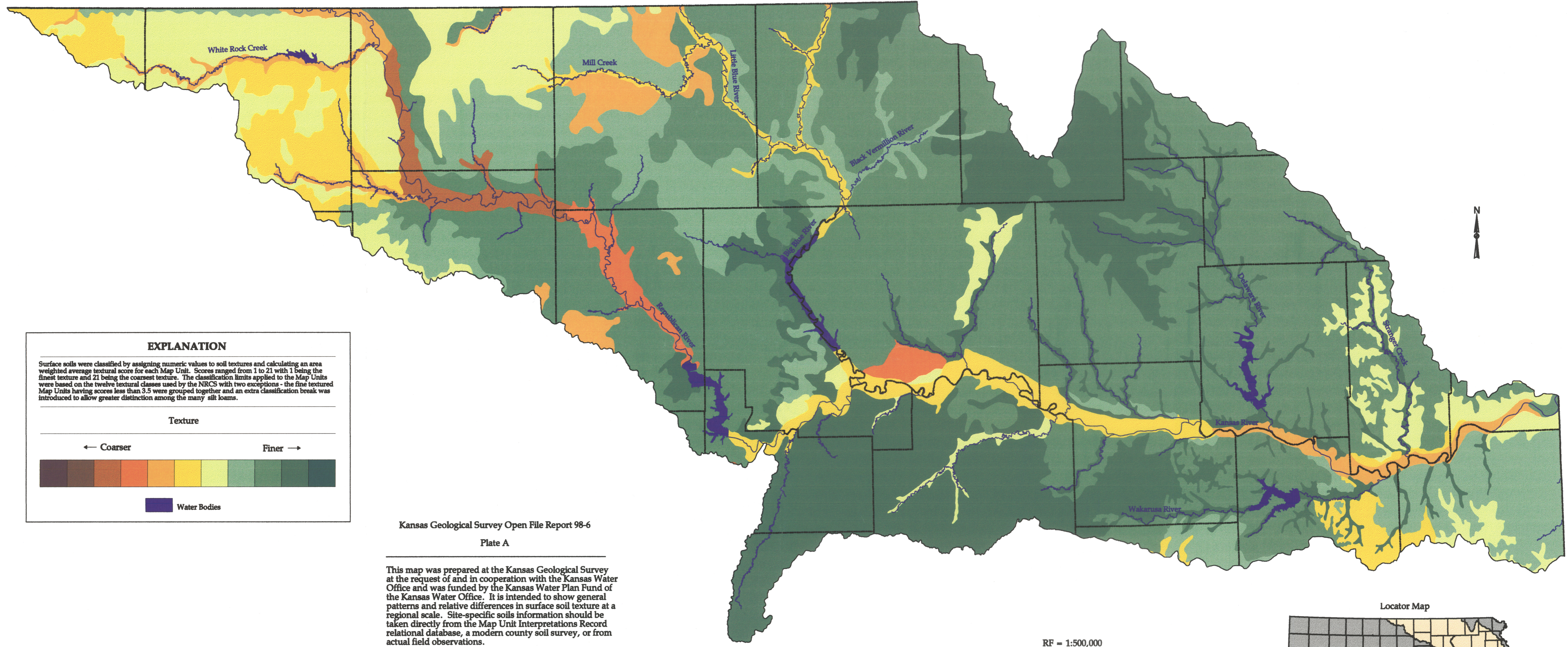


Surface Soils Classified by Texture in the Kansas-Lower Republican River Basins in Kansas



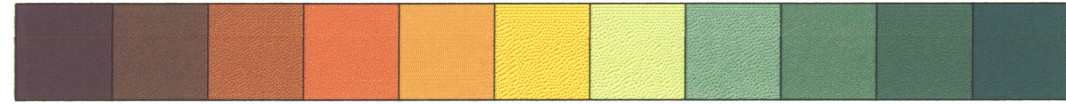
EXPLANATION

Surface soils were classified by assigning numeric values to soil textures and calculating an area weighted average textural score for each Map Unit. Scores ranged from 1 to 21 with 1 being the finest texture and 21 being the coarsest texture. The classification limits applied to the Map Units were based on the twelve textural classes used by the NRCS with two exceptions - the fine textured Map Units having scores less than 3.5 were grouped together and an extra classification break was introduced to allow greater distinction among the many silt loams.

Texture

← Coarser

Finer →



Water Bodies

Kansas Geological Survey Open File Report 98-6

Plate A

This map was prepared at the Kansas Geological Survey at the request of and in cooperation with the Kansas Water Office and was funded by the Kansas Water Plan Fund of the Kansas Water Office. It is intended to show general patterns and relative differences in surface soil texture at a regional scale. Site-specific soils information should be taken directly from the Map Unit Interpretations Record relational database, a modern county soil survey, or from actual field observations.

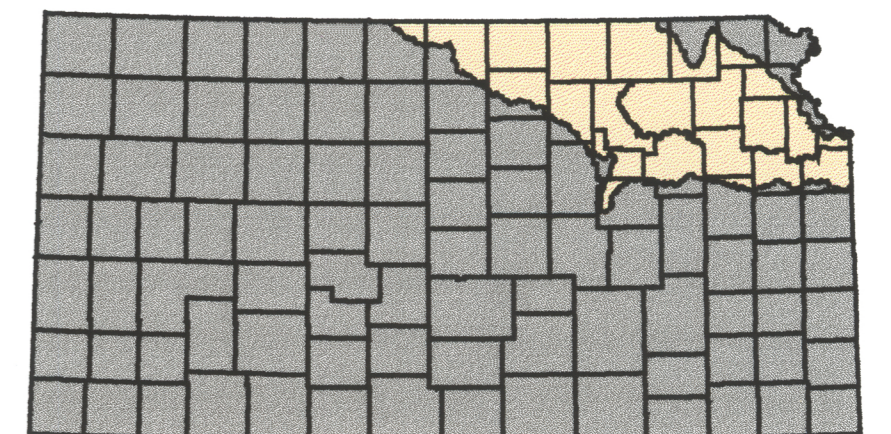
RF = 1:500,000

0 10 20 Miles

0 10 20 30 40 Kilometers

One inch equals approximately eight miles

Locator Map



The Kansas Geological Survey compiled this map according to specific cartographic standards, using what is thought to be the most reliable information available. The Kansas Geological Survey does not guarantee freedom from errors or inaccuracies and disclaims any legal responsibility or liability for interpretations made from the map, or decisions based thereon.

Projection: Lambert Conformal Conic
 Standard Parallels: 33 and 45 degrees North
 Central Meridian: -98.15 degrees West
 Latitude of Origin: 36 degrees North
 Datum: NAD27

Data Source:
 U.S. Department of Agriculture,
 Natural Resources Conservation
 Service (NRCS), 1994

Compiled by Jeff Schloss and Lee
 Bissinger at the Kansas Geological
 Survey in May 1998.