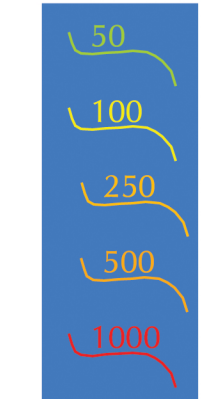


Sulfate Concentration Isolines for the High Plains Aquifer in the Upper Arkansas River Corridor in Southwest Kansas

Kansas Geological Survey
Open-File Report 2000-72, Plate B

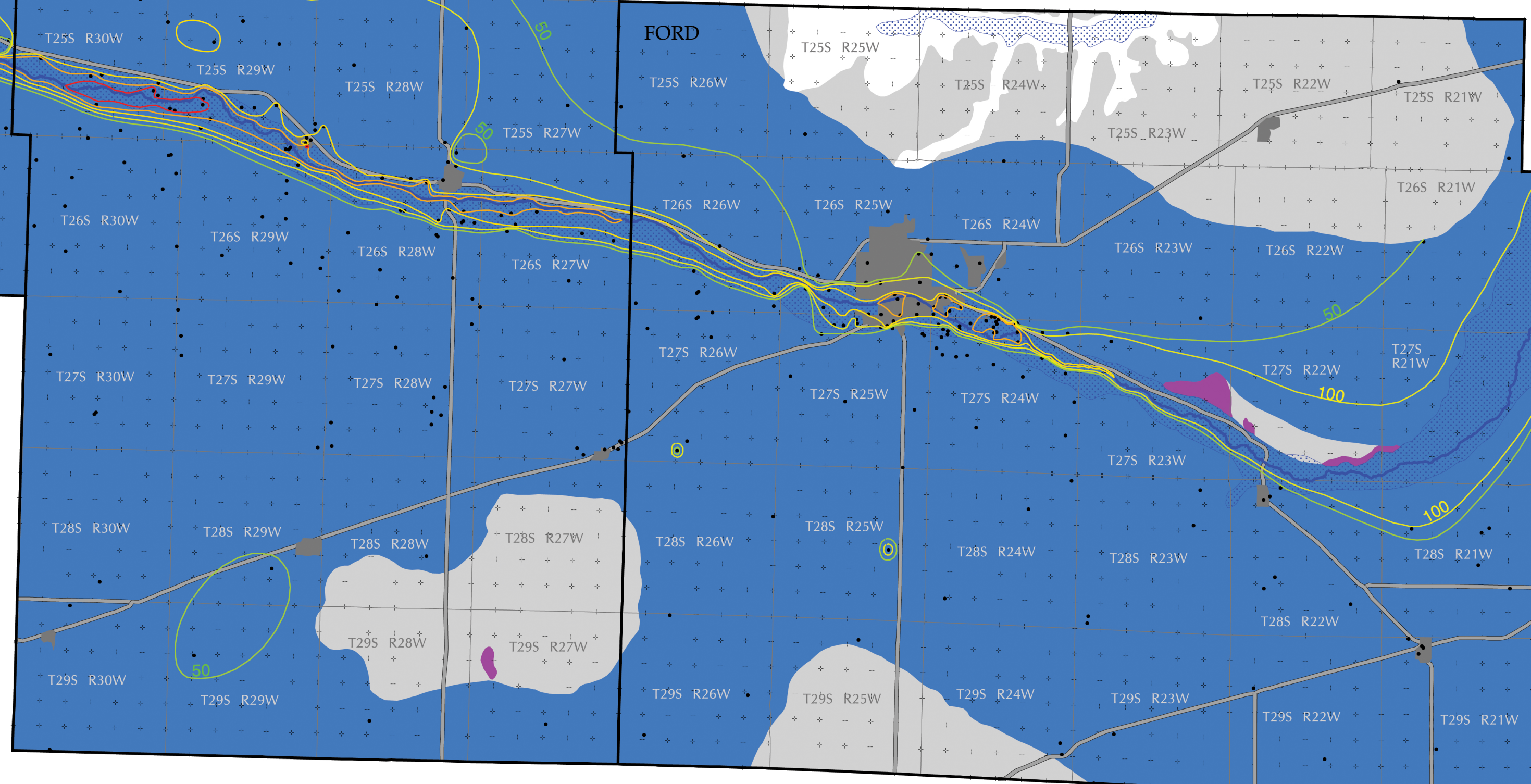
Scientific author: D.O. Whittemore
Cartography: J.A. Schloss



Sulfate isolines and concentrations in mg/L

A description of the sources of data and of the methods used in their analysis can be found in Kansas Geological Survey Open-File Report 2000-73.

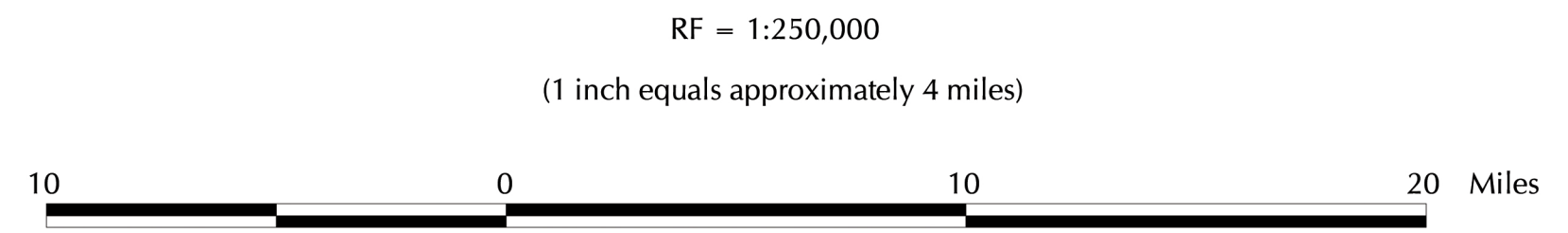
- Wells with water quality samples
- Main channel of the Arkansas River
- Quaternary alluvium



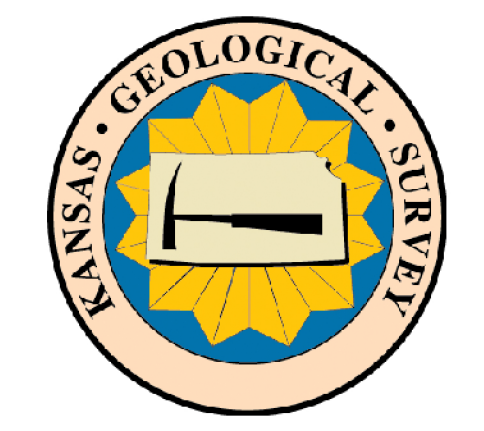
High Plains aquifer extent:

- Area of little or no saturated thickness
- Missing aquifer due to outcrop of older rocks
- Area having some saturated thickness
- Arkansas River alluvium

- County boundaries
- Major cities
- Major highways
- Township boundaries
- Section corners



The Kansas Geological Survey does not guarantee this map to be free from errors or inaccuracies and disclaims any responsibility or liability for interpretations based on data used in the production of this map or decisions based thereon. This map is intended to make results of research available at the earliest possible date, but is not intended to constitute final or formal publication.



Projection: Lambert Conformal Conic
Units: Meters
Datum: NAD27
1st standard parallel: 33 00 00
2nd standard parallel: 45 00 00
Central meridian: -98 15 00
Latitude of projection's origin: 36 00 00

Prepared by the Kansas Geological Survey as part of the Upper Arkansas River Corridor Study, a Kansas Water Plan project.