

PERCENT CHANGE IN SATURATED THICKNESS  
AT SECTION CENTERS

IN THE HIGH PLAINS AQUIFER  
1979-1981 TO 1999-2001

using data only from wells that have measurements  
in both periods (1979-1981 and 1999-2001)



SOUTHWEST KANSAS GROUNDWATER MANAGEMENT DISTRICT

Prepared by Kansas Geological Survey in cooperation with the  
Southwest Kansas Groundwater Management District

John J. Woods and Marios A. Sophocleous

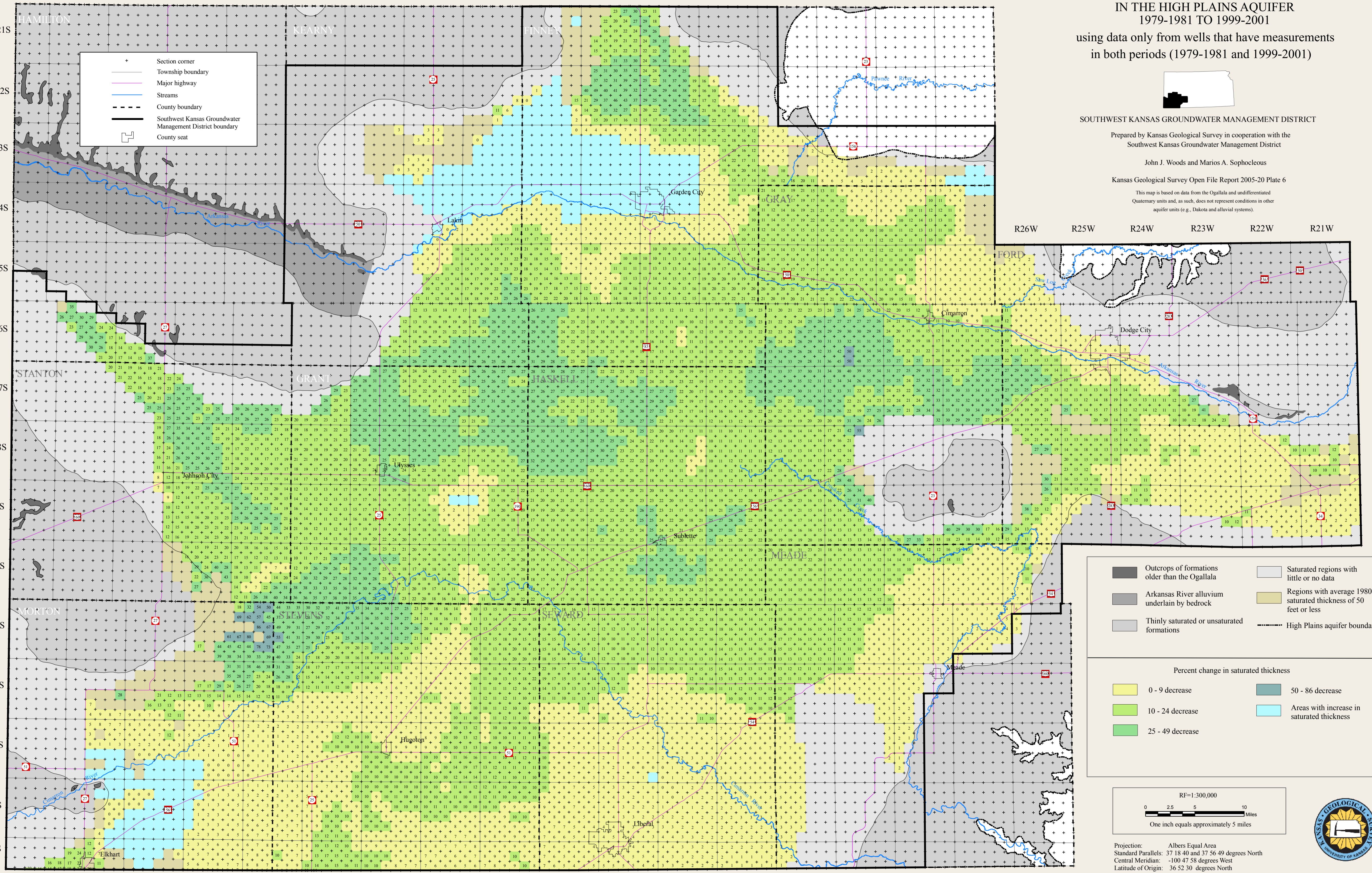
Kansas Geological Survey Open File Report 2005-20 Plate 6

This map is based on data from the Ogallala and undifferentiated  
Quaternary units and, as such, does not represent conditions in other  
aquifer units (e.g., Dakota and alluvial systems).

R43W R42W R41W R40W R39W R38W R37W R36W R35W R34W R33W R32W R31W R30W R29W R28W R27W

T21S  
T22S  
T23S  
T24S  
T25S  
T26S  
T27S  
T28S  
T29S  
T30S  
T31S  
T32S  
T33S  
T34S  
T35S

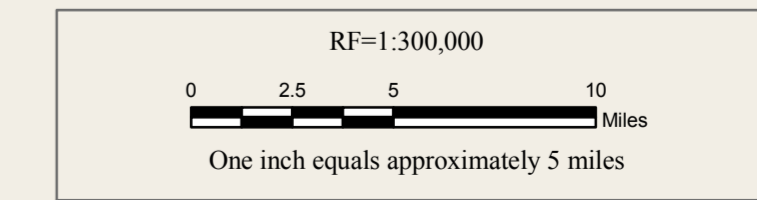
+ Section corner  
 --- Township boundary  
 --- Major highway  
 --- Streams  
 - - - County boundary  
 - - - Southwest Kansas Groundwater Management District boundary  
 □ County seat



■ Outcrops of formations older than the Ogallala  
 ■ Arkansas River alluvium underlain by bedrock  
 ■ Thinly saturated or unsaturated formations  
 ■ Saturated regions with little or no data  
 ■ Regions with average 1980 saturated thickness of 50 feet or less  
 - - - High Plains aquifer boundary

Percent change in saturated thickness

|                    |  |
|--------------------|--|
| ■ 0 - 9 decrease   | ■ 50 - 86 decrease                           |
| ■ 10 - 24 decrease | ■ Areas with increase in saturated thickness |
| ■ 25 - 49 decrease |  |



Projection: Albers Equal Area  
Standard Parallels: 37 18 40 and 37 56 49 degrees North  
Central Meridian: -100 47 58 degrees West  
Latitude of Origin: 36 52 30 degrees North



The Kansas Geological Survey and the Southwest Kansas Groundwater Management District do not guarantee this map to be free from errors or inaccuracies and disclaim any responsibility or liability for interpretations from the map or decisions based thereon.