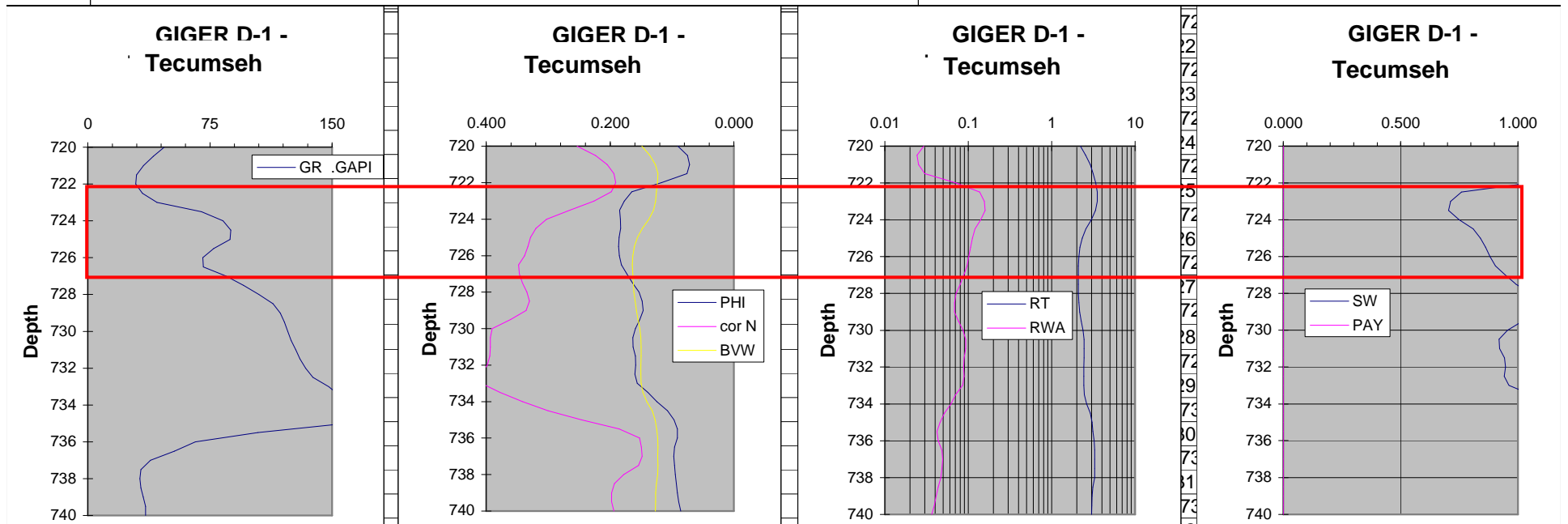
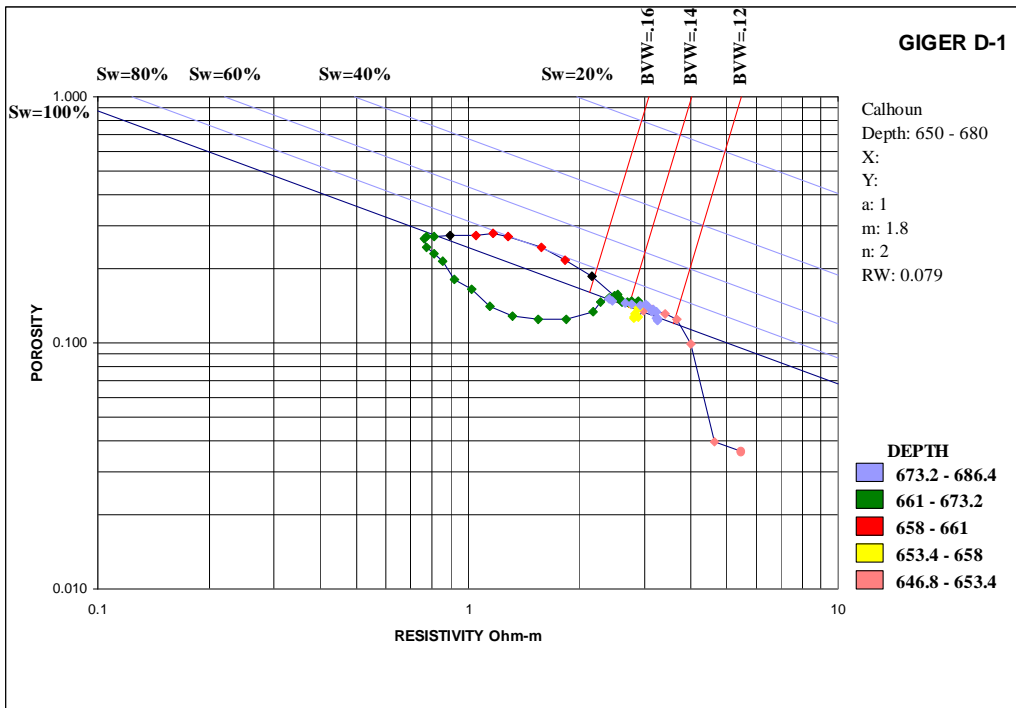


## Giger D-1

### Tecumseh (722-727 ft)

- BVW and Sw increase with depth
- Separation between density porosity and BVW
- **Poor prospect - gas in transition**





**Giger D-1**  
**Calhoun (658-661 ft)**

- Gas effect on neutron density, some separation between density porosity and BVW
- Sw > 80% and increases with depth. BVW + 0.16
- **Poor prospect - Gas in transition,**

