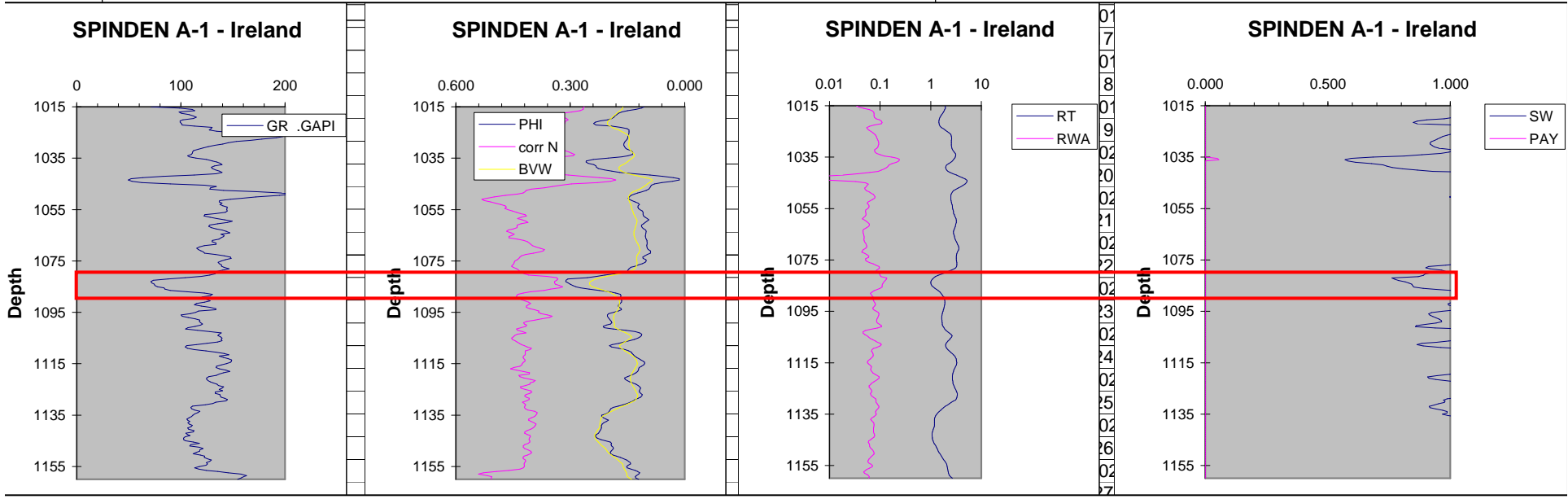
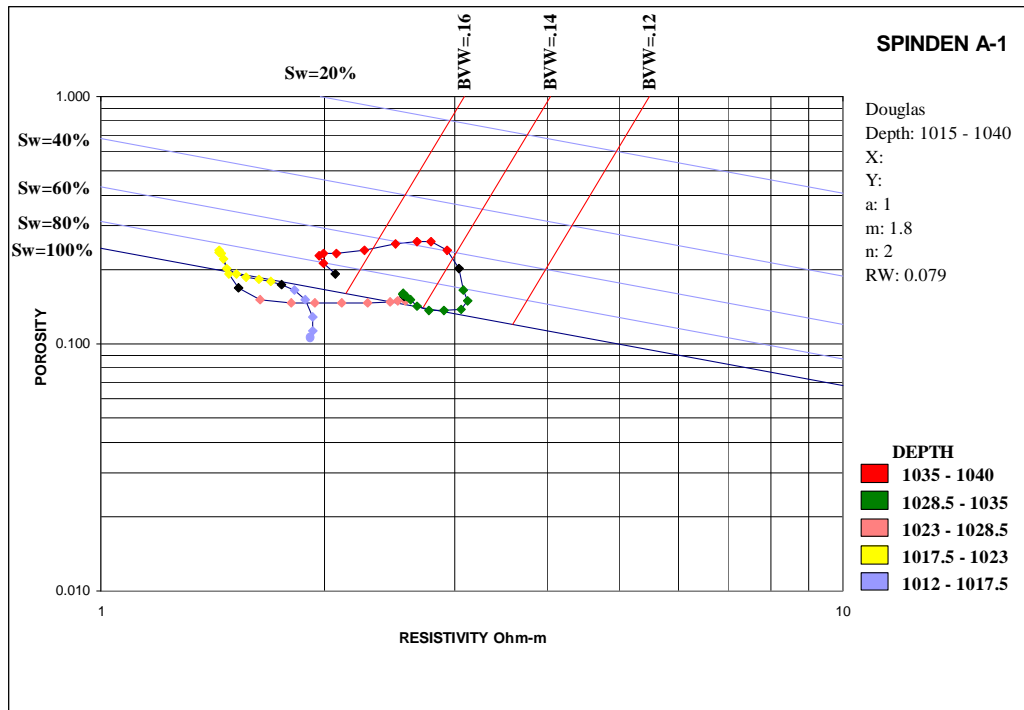


**Spinden A-1
Ireland (1080-1086 ft)**

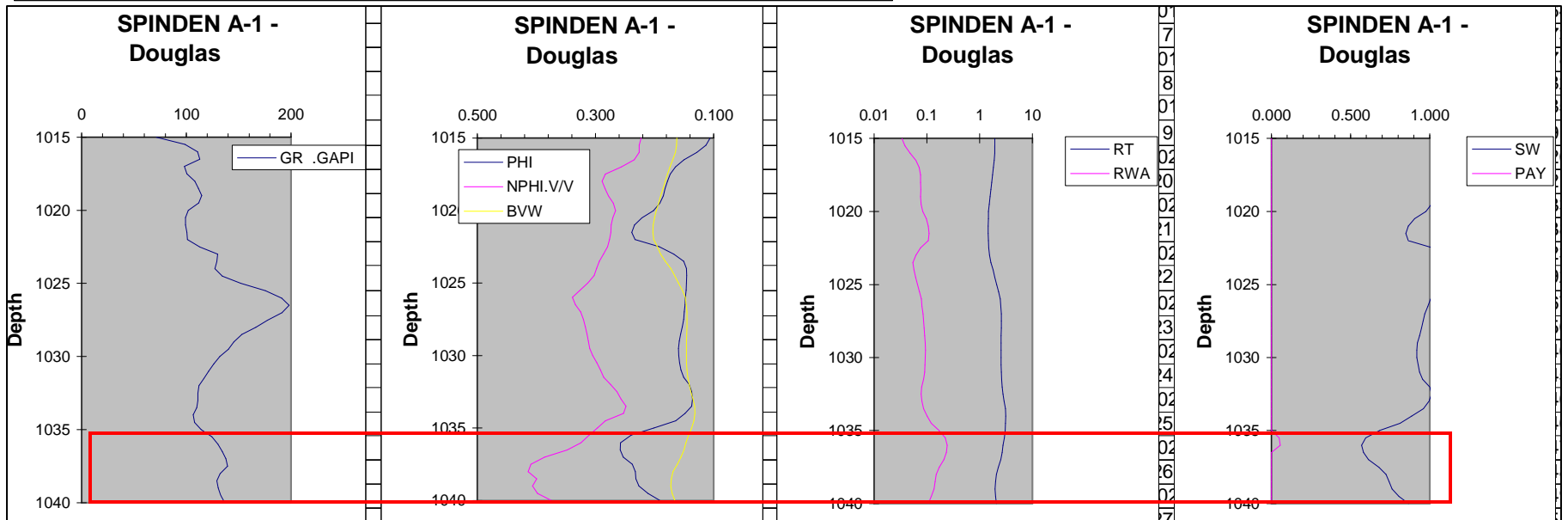
- Separation between density porosity and BVW
- GR < 100, Sw~80%, BVW high
- **Poor prospect – some gas in transition**

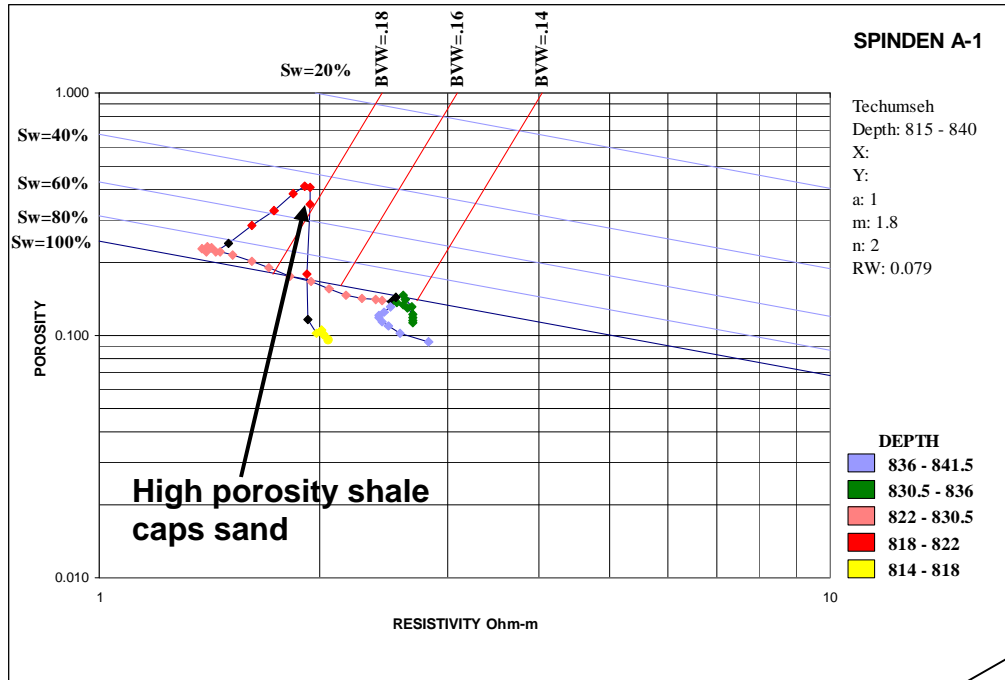




Spinden A-1 Douglas (1035-40)

- High GR (> 100 API), separation between density porosity and BVW
- Increasing Sw at the base indicate possible transition
- **Probably some gas** where Sw < 60%.
- GR cut-off needs to be tested.

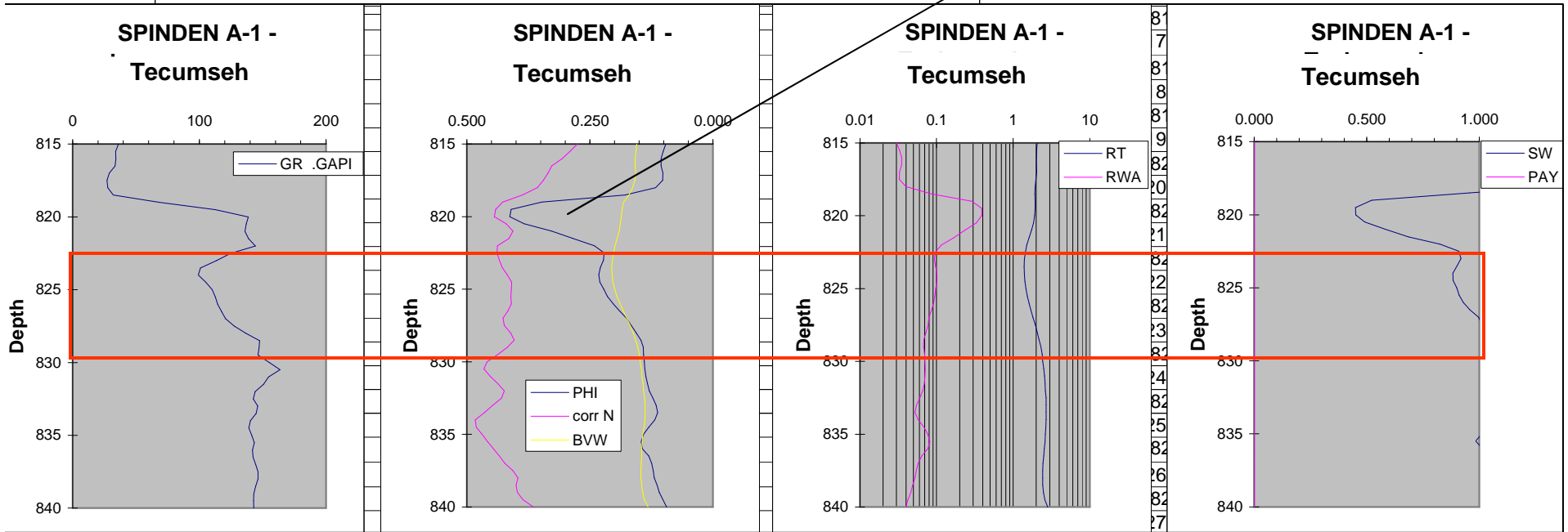




**Spinden A-1
 Tecumseh (822-30 ft)**

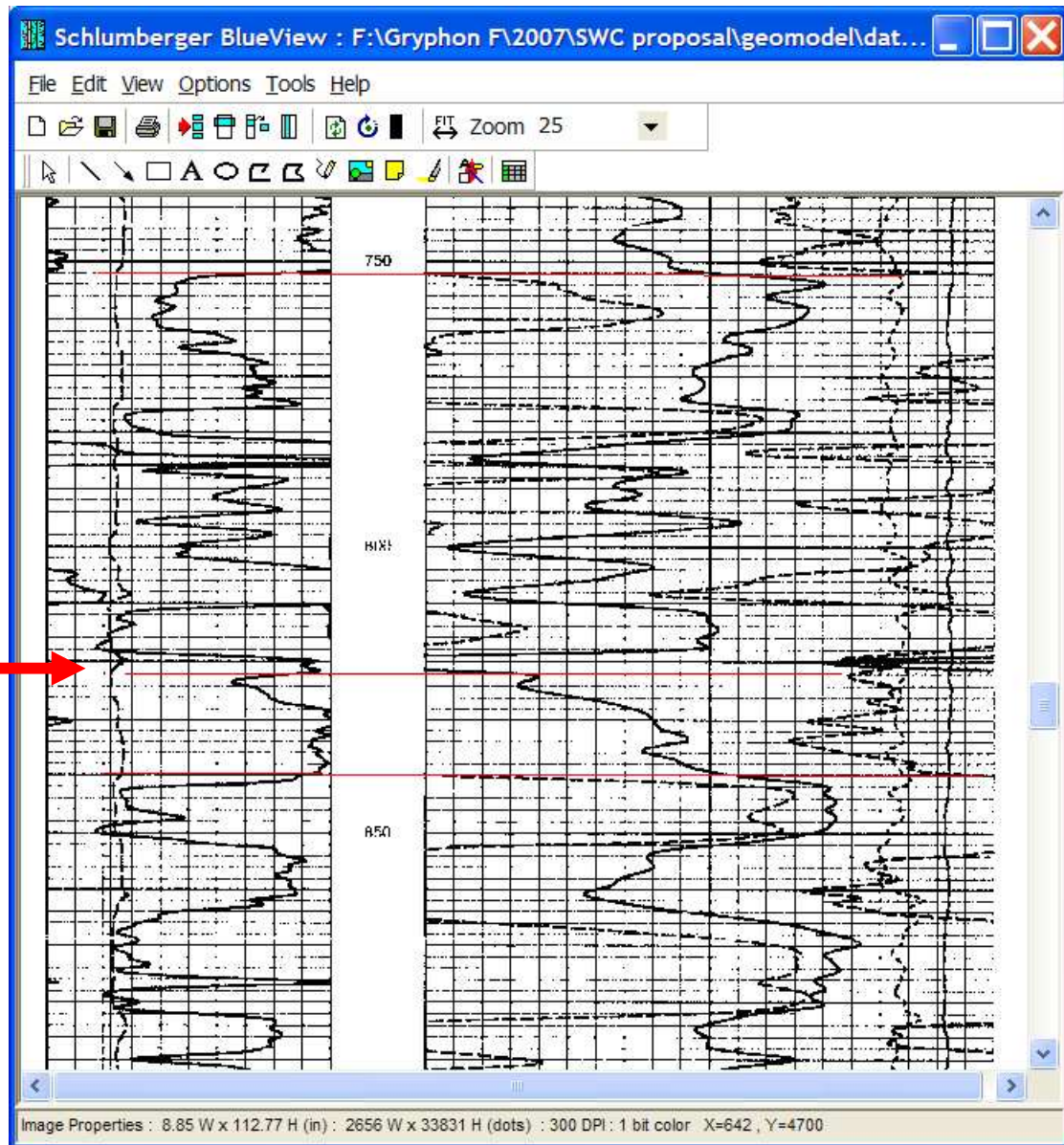
- Capping shale on top of sand.
- Density porosity and BVW overlap in sand, and high GR (> 100 API)
- **Sand expected to be wet**

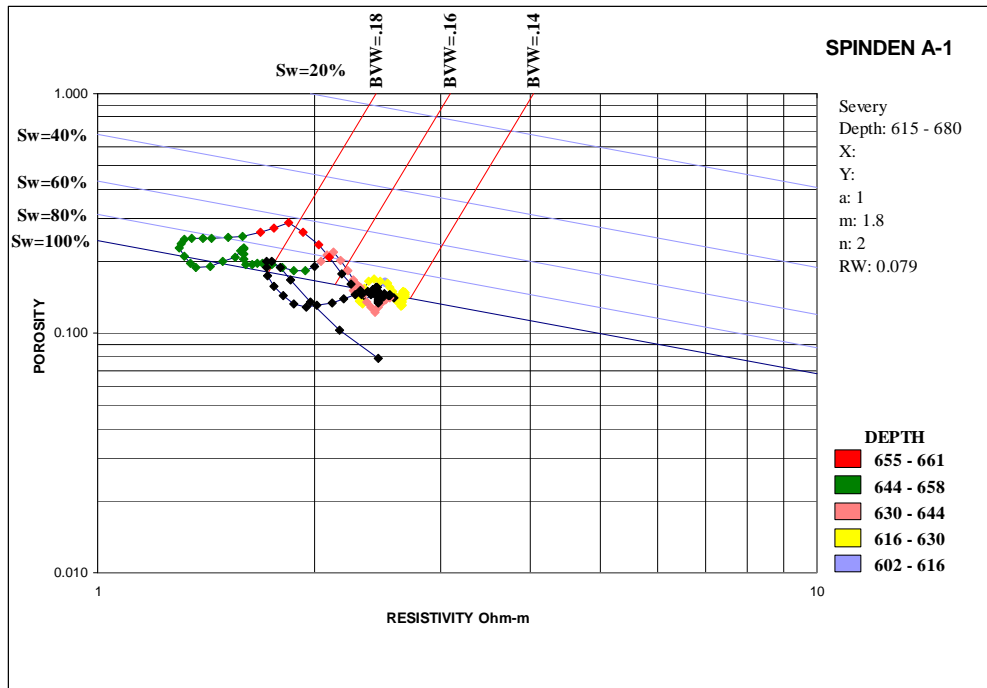
Capping shale – not a wash out effect



Spinden A-1

Shale caps
Tecumseh sand.
The high porosity
marking the shale
is not due to hole
washout





Spinden A-1 Severy (655-61 ft)

- Cleaner sand (low GR) with high BVW (>0.16) indicating finer pores
- Separation between density porosity and BVW
- Intermediate Sw (between 60 and 70%) suggests
- **Gas in transition**

