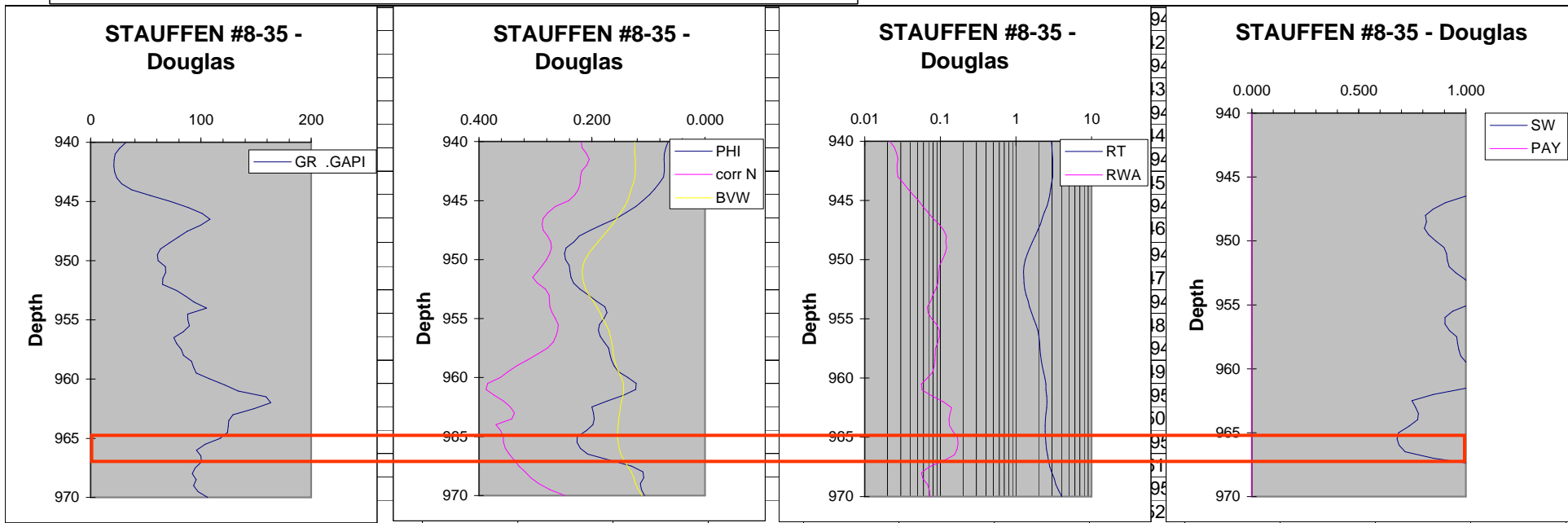


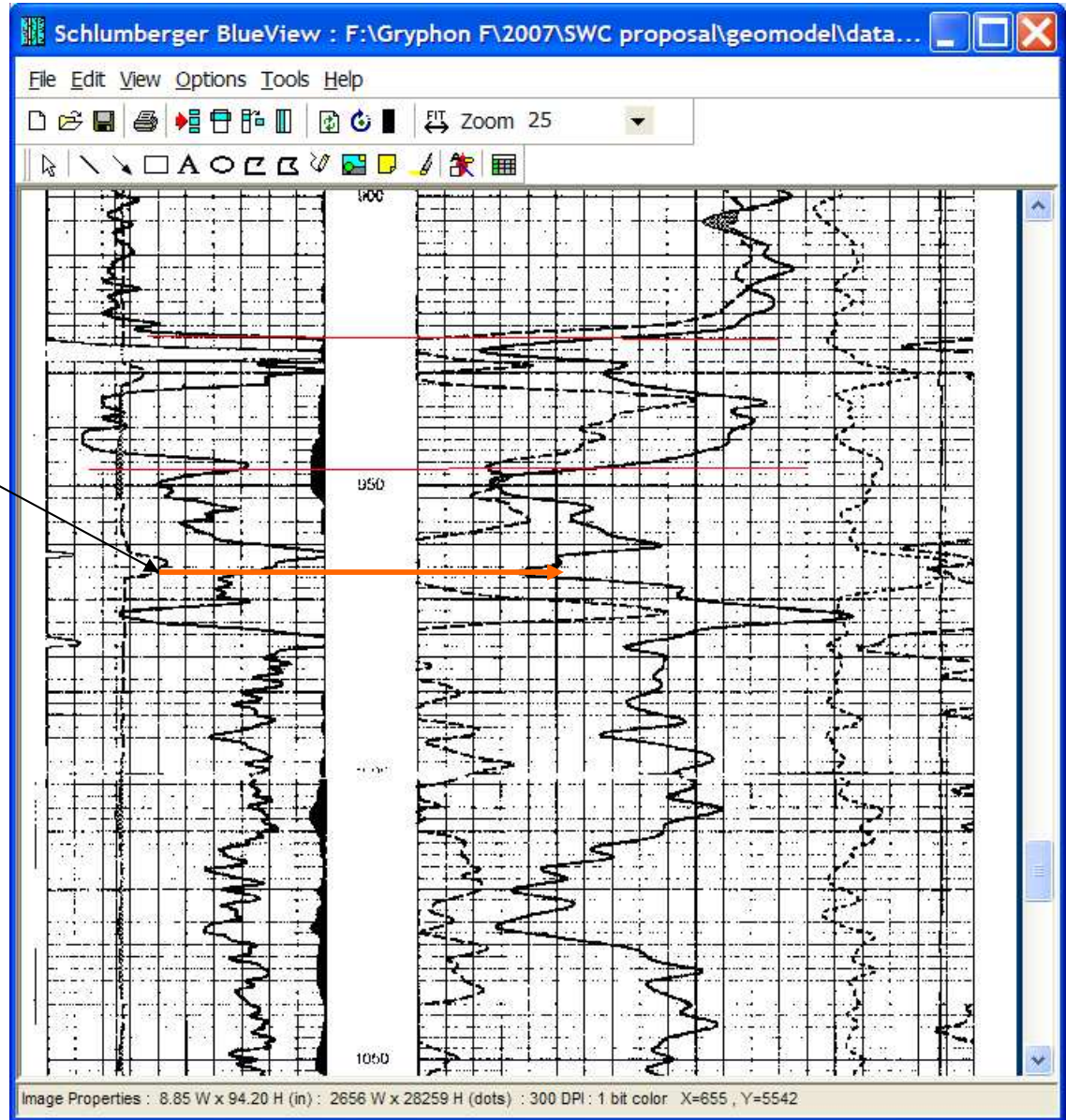
Stauffer 8-35 Douglas (965-967 ft)

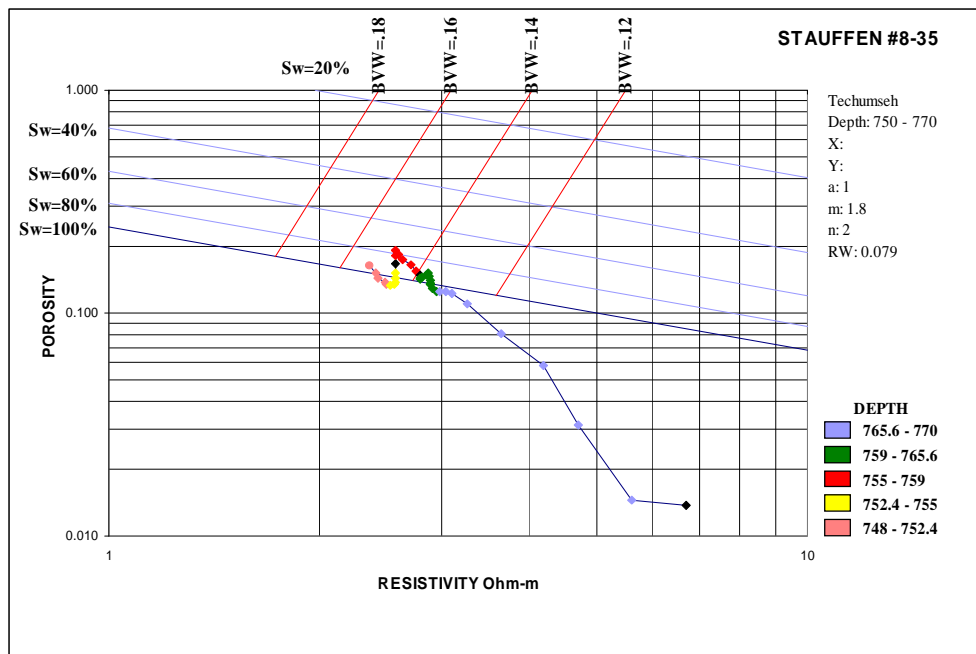
- Shale washout on top of sand (962-964 ft)
- Sand below shale - BVW cluster around 0.15, separation between density porosity and BVW
- Sw < 80%
- **Thin zone with some transitional gas.**
- Zone needs to be tested to see if water is mobile.



Stauffer 8-35 Douglas

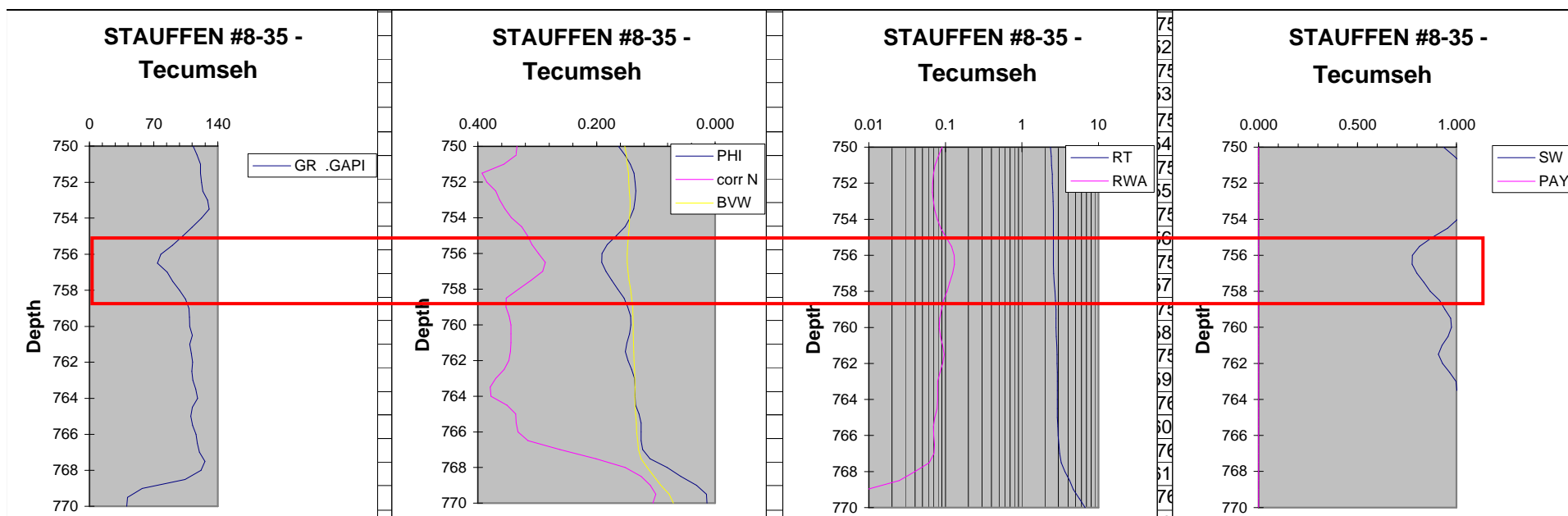
- Washout at top in overlying shale

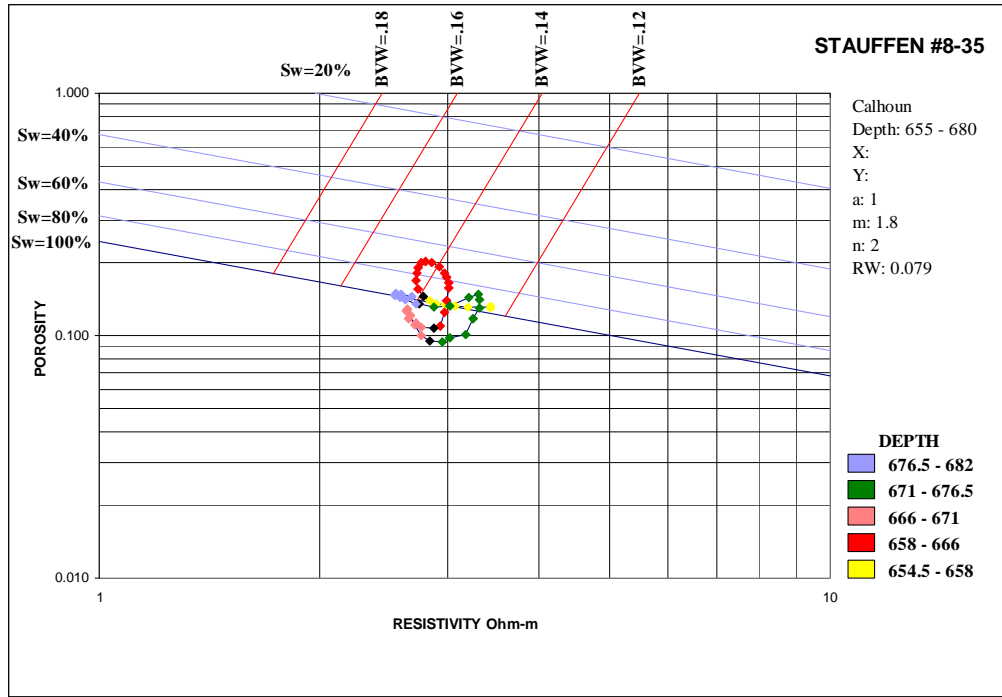




Stauffer 8-35 Tecumseh (755-759 ft)

- Small clustering at moderate BVW (0.15) – test to check for mobile water
- Decrease in GR upwards may be indicative of coarsening
- Top of sand - Separation between density porosity and BVW
- Sw > 80%
- Bottom of sand - Sw increases downwards
- **Poor prospect - gas in transition zone**

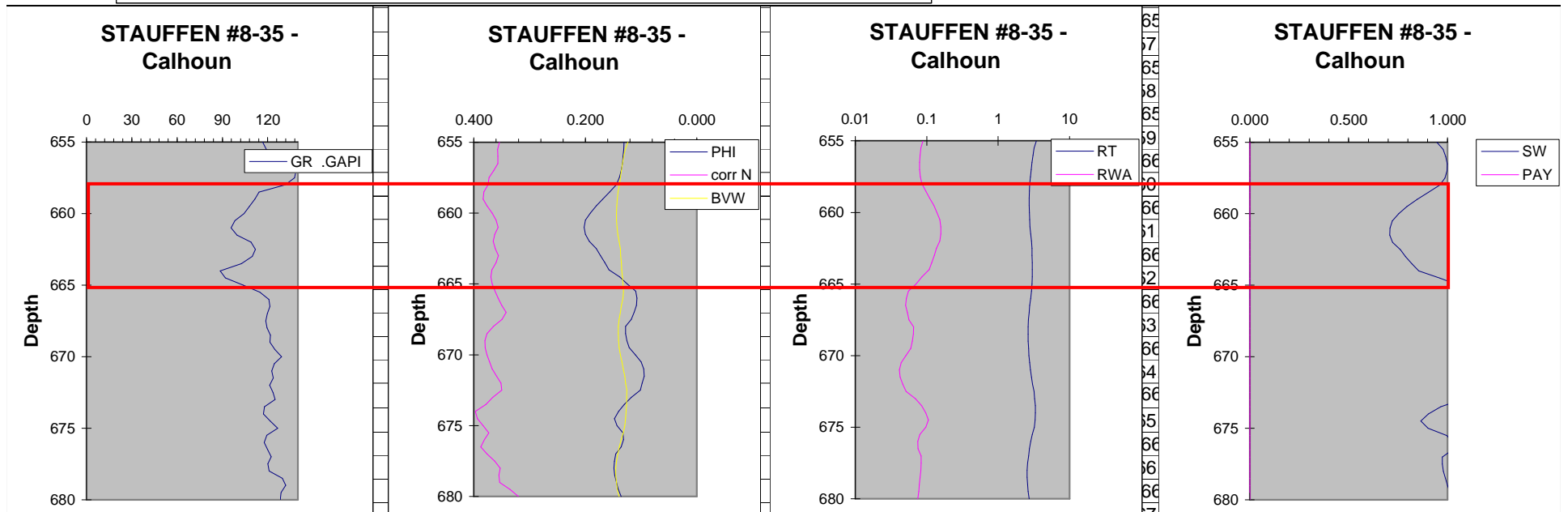


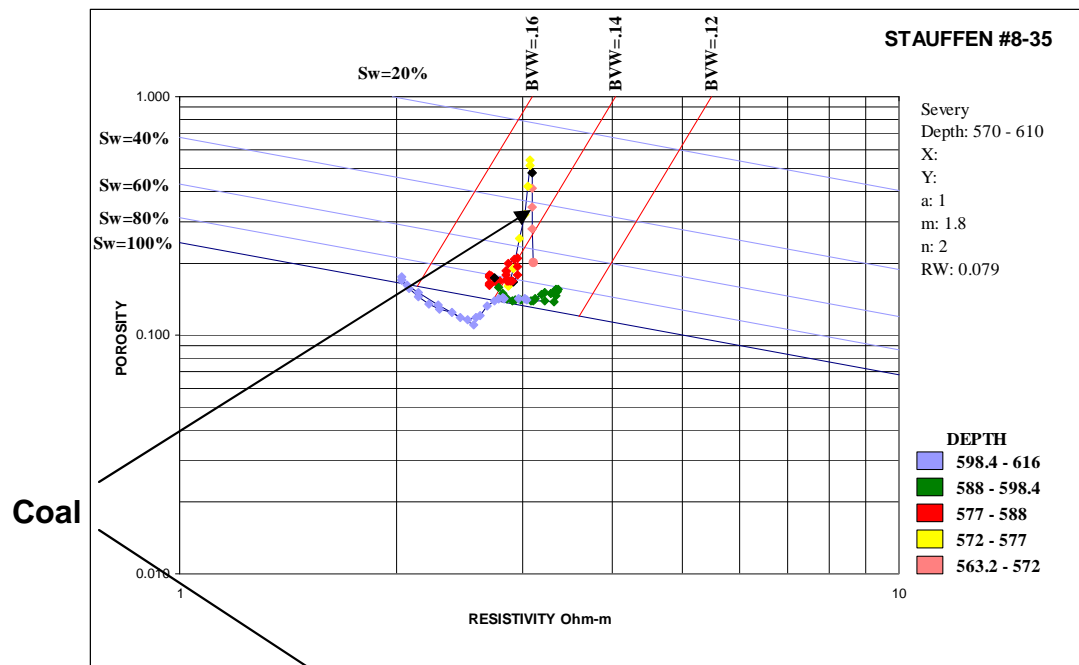


Stauffer 8-35

Calhoun (658-65 ft)

- Top of sand – low GR and separation between density porosity and BVW, BVW around 0.14
- Base of sand - Sw increases with depth – indicative of transition
- **Probably gas in transition**





Stauffer 8-35

Severy (577-588 ft)

- Clustered BVW ~0.14
- Coal on top of sand (high porosity, moderate GR)
- GR indicates cleaning upward in sand. No gas effect visible. Porosity low.
- Slight separation between density porosity and BVW, Sw < 80%
- **Probable gas**

