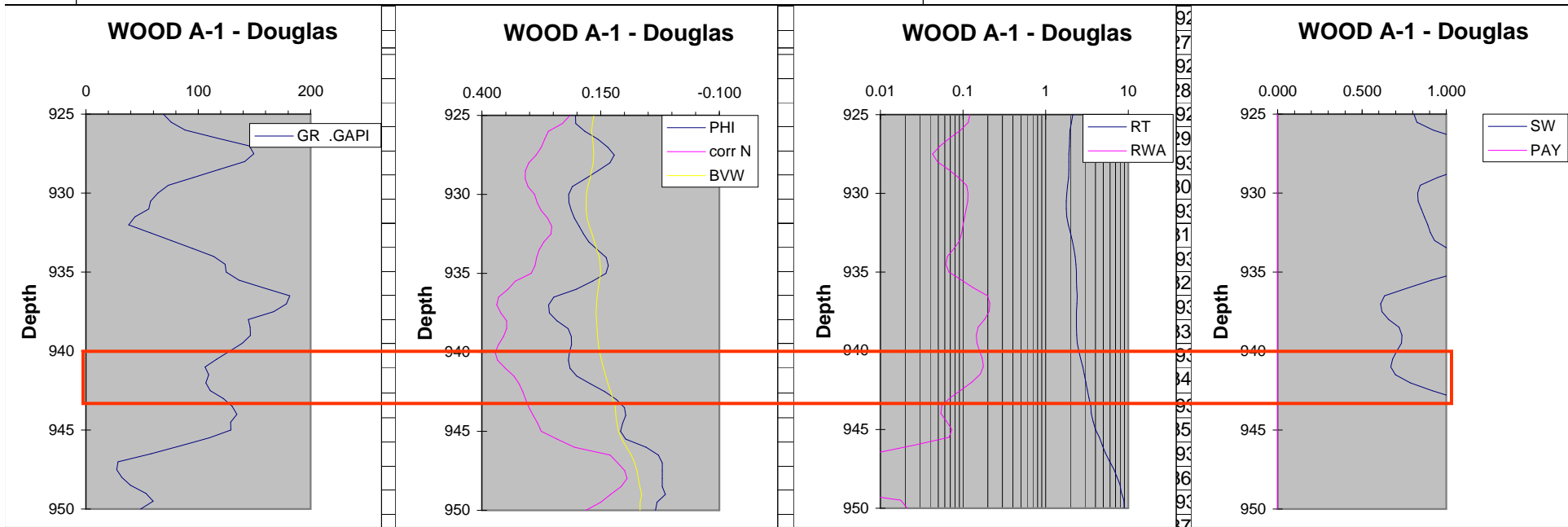
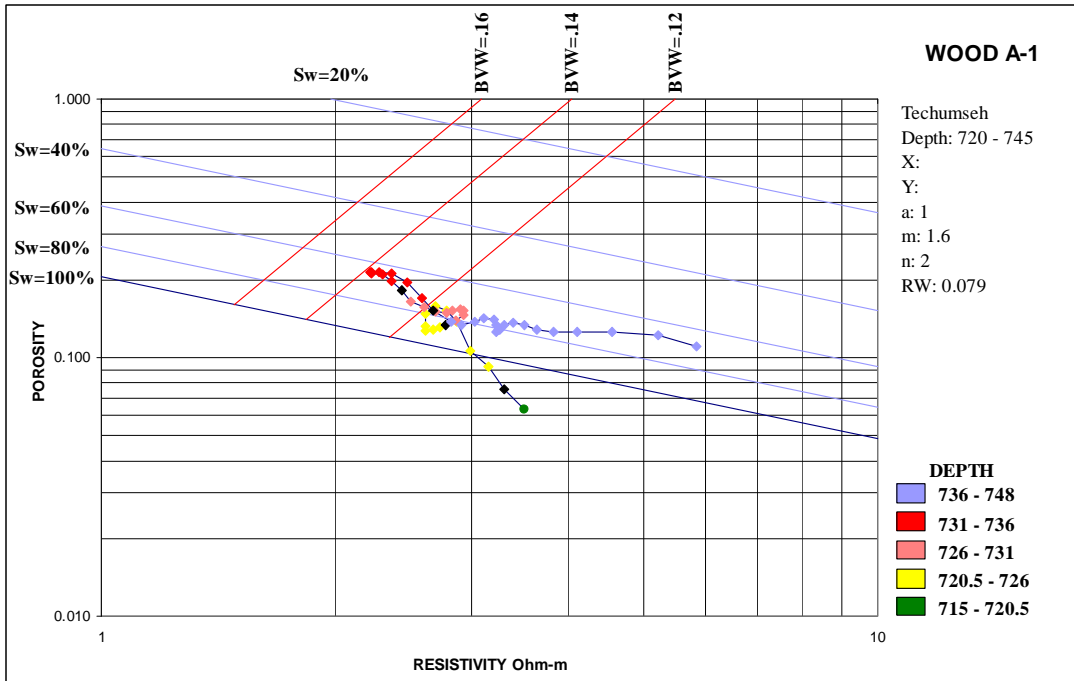


### Wood A-1

#### Douglas (940-943 ft)

- No gas effect on neutron porosity. Separation between density porosity and BVW.
- Quite shaly (GR > 100 API), but BVW less than 0.155
- Sw < 80% and increases with depth
- **Possible gas in transition**





### Wood A-1

#### Tecumseh (732-736 ft)

- Slight gas effect on neutron log.
- GR < 100 API with moderate porosity and BVW cluster around 0.0135
- Sw < 80%. No transition visible
- **Possibly gas**

