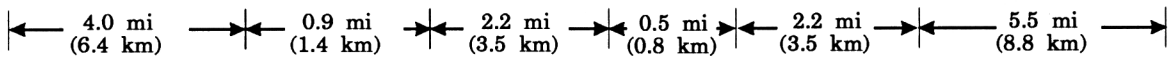


B

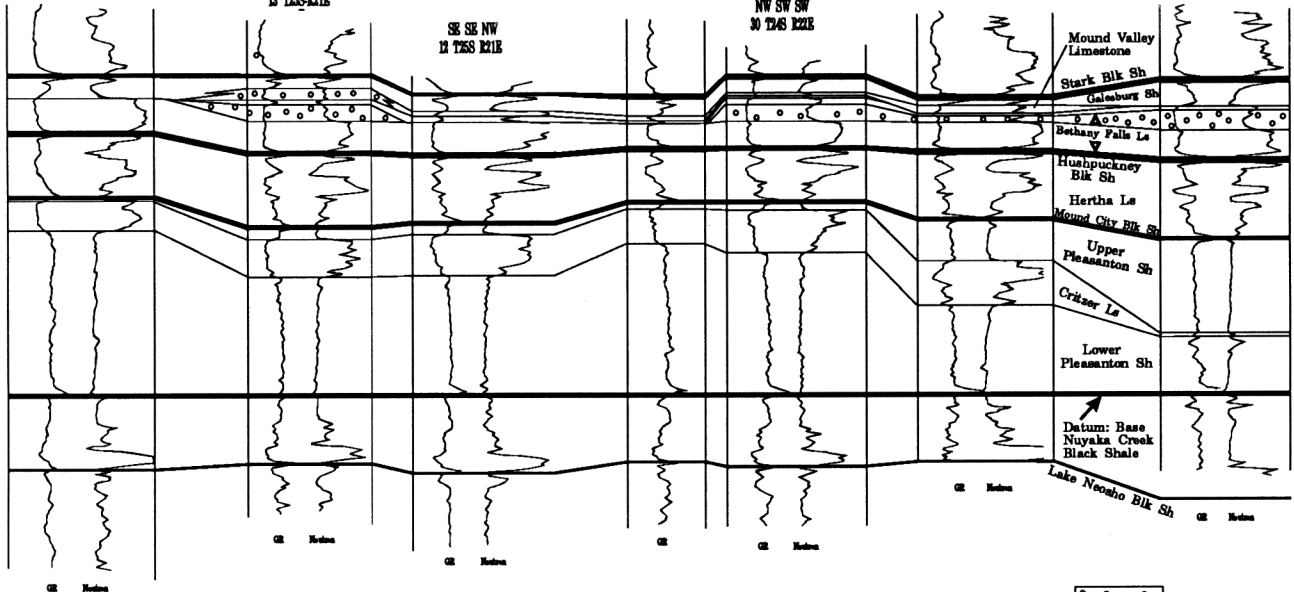
*

*

B'

Tie with A-A'

SE SW SW 28 T2S R2E C NW 13 T2S R2E SE SE NW 12 T2S R2E NE NE NE 36 T2S R2E NW SW SW 30 T2S R2E E2S Highlough #1 SW SE SW #1 T2S R2E E2S Womelsdorf #1 SE SE SE 17 T2S R2E



Porous oolitic and bioclastic grainstone and packstone

* Cores used in workshop