

Pendleton Ld. & Ex. Inc. #1 Schauf (core)- #1 Pendleton (E-logs)
 16-27s-29w Gray Co. Kansas

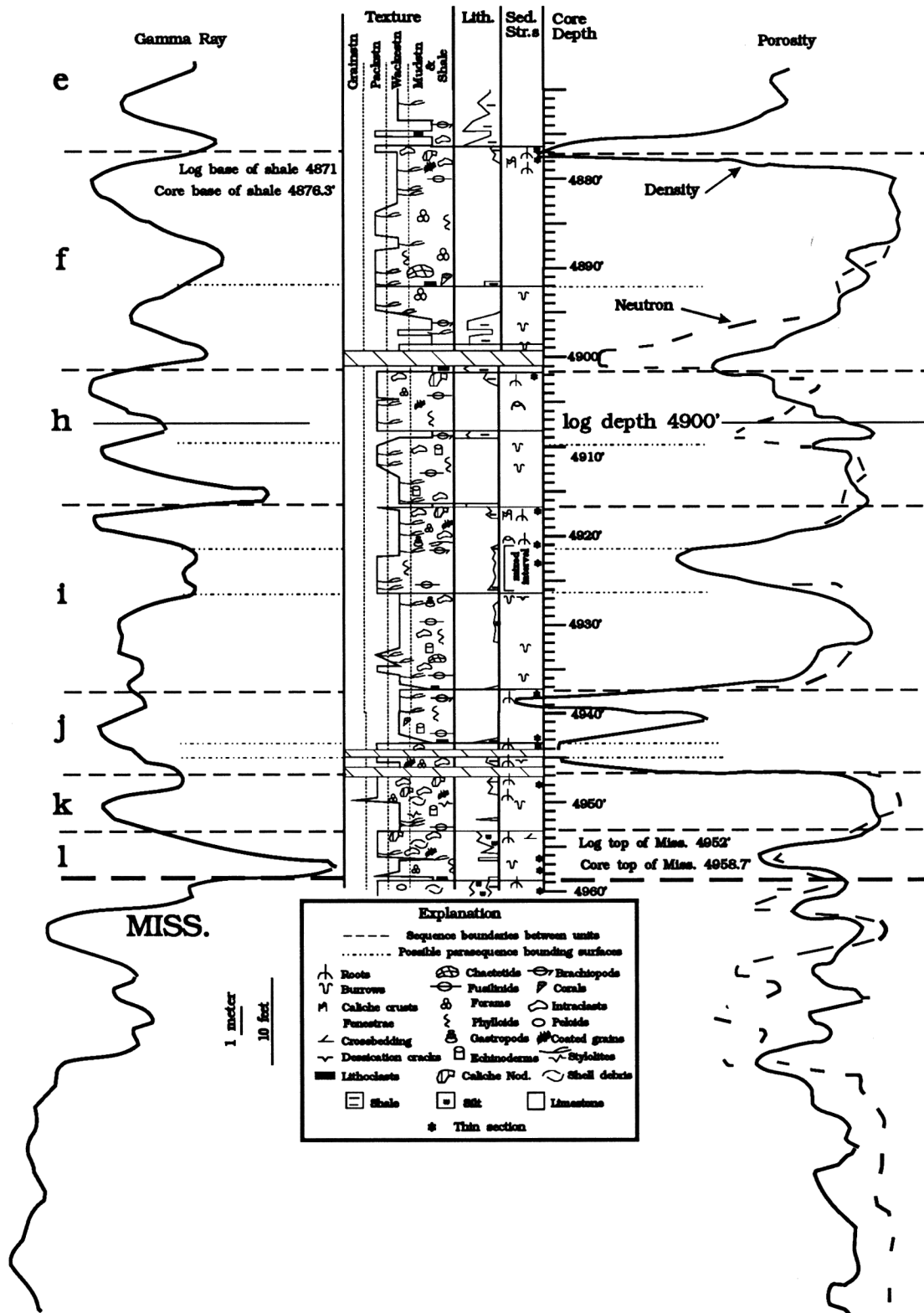


FIGURE 3—CORE DESCRIPTION AND WIRELINE LOG OF "GRAY GROUP" ROCKS FROM TYPE SECTION, Pendleton Land & Exploration Inc., #1 Schauf, sec. 16, T. 27 S., R. 29 W., Gray County, Kansas.