

DATE: 07-25-83 TIME: 13M WELL NO: 10 WELL DEPTH: 3433' WELL TYPE: OIL

LOGGING COMPANY: GEACORND LEVEL 110' LOGGING EQUIPMENT: K. B. L. FILM

LOGGING DATE: 07-25-83 LOGGING TIME: 13M LOGGING LOCATION: KAUFMAN #2

LOGGING DEPTH: 3433' LOGGING INTERVAL: 0.034" 343'

LOGGING DEPTH: 3433' LOGGING INTERVAL: 0.034" 343'

LOGGING DEPTH: 3433' LOGGING INTERVAL: 0.034" 343'

LOGGING DEPTH: 3433' LOGGING INTERVAL: 0.034" 343'

LOGGING DEPTH: 3433' LOGGING INTERVAL: 0.034" 343'

LOGGING DEPTH: 3433' LOGGING INTERVAL: 0.034" 343'

LOGGING DEPTH: 3433' LOGGING INTERVAL: 0.034" 343'

LOGGING DEPTH: 3433' LOGGING INTERVAL: 0.034" 343'

LOGGING DEPTH: 3433' LOGGING INTERVAL: 0.034" 343'

LOGGING DEPTH: 3433' LOGGING INTERVAL: 0.034" 343'

LOGGING DEPTH: 3433' LOGGING INTERVAL: 0.034" 343'

LOGGING DEPTH: 3433' LOGGING INTERVAL: 0.034" 343'

LOGGING DEPTH: 3433' LOGGING INTERVAL: 0.034" 343'

LOGGING DEPTH: 3433' LOGGING INTERVAL: 0.034" 343'

LOGGING DEPTH: 3433' LOGGING INTERVAL: 0.034" 343'

LOGGING DEPTH: 3433' LOGGING INTERVAL: 0.034" 343'

LOGGING DEPTH: 3433' LOGGING INTERVAL: 0.034" 343'

LOGGING DEPTH: 3433' LOGGING INTERVAL: 0.034" 343'

LOGGING DEPTH: 3433' LOGGING INTERVAL: 0.034" 343'

LOGGING DEPTH: 3433' LOGGING INTERVAL: 0.034" 343'

LOGGING DEPTH: 3433' LOGGING INTERVAL: 0.034" 343'

LOGGING DEPTH: 3433' LOGGING INTERVAL: 0.034" 343'

LOGGING DEPTH: 3433' LOGGING INTERVAL: 0.034" 343'

LOGGING DEPTH: 3433' LOGGING INTERVAL: 0.034" 343'

LOGGING DEPTH: 3433' LOGGING INTERVAL: 0.034" 343'

LOGGING DEPTH: 3433' LOGGING INTERVAL: 0.034" 343'

LOGGING DEPTH: 3433' LOGGING INTERVAL: 0.034" 343'

LOGGING DEPTH: 3433' LOGGING INTERVAL: 0.034" 343'

LOGGING DEPTH: 3433' LOGGING INTERVAL: 0.034" 343'

LOGGING DEPTH: 3433' LOGGING INTERVAL: 0.034" 343'

LOGGING DEPTH: 3433' LOGGING INTERVAL: 0.034" 343'

LOGGING DEPTH: 3433' LOGGING INTERVAL: 0.034" 343'

LOGGING DEPTH: 3433' LOGGING INTERVAL: 0.034" 343'

LOGGING DEPTH: 3433' LOGGING INTERVAL: 0.034" 343'

LOGGING DEPTH: 3433' LOGGING INTERVAL: 0.034" 343'

GENERAL		GAMMA RAY		NEUTRON	
WELL NO.	10	LOG NO.	110	WELL NO.	10
WELL DEPTH	3433'	LOG DEPTH	3433'	WELL DEPTH	3433'
LOGGING DATE	07-25-83	LOGGING TIME	13M	LOGGING DATE	07-25-83
LOGGING LOCATION	KAUFMAN #2	LOGGING INTERVAL	0.034" 343'	LOGGING LOCATION	KAUFMAN #2
LOGGING DEPTH	3433'	LOGGING INTERVAL	0.034" 343'	LOGGING DEPTH	3433'
LOGGING INTERVAL	0.034" 343'	LOGGING INTERVAL	0.034" 343'	LOGGING INTERVAL	0.034" 343'

GAMMA RAY		NEUTRON	
API UNITS	3539	API UNITS	76
API UNITS	2100	API UNITS	76
API UNITS	2100	API UNITS	76

GAMMA RAY		NEUTRON	
API UNITS	3539	API UNITS	76
API UNITS	2100	API UNITS	76
API UNITS	2100	API UNITS	76

GAMMA RAY		NEUTRON	
API UNITS	3539	API UNITS	76
API UNITS	2100	API UNITS	76
API UNITS	2100	API UNITS	76

GAMMA RAY		NEUTRON	
API UNITS	3539	API UNITS	76
API UNITS	2100	API UNITS	76
API UNITS	2100	API UNITS	76

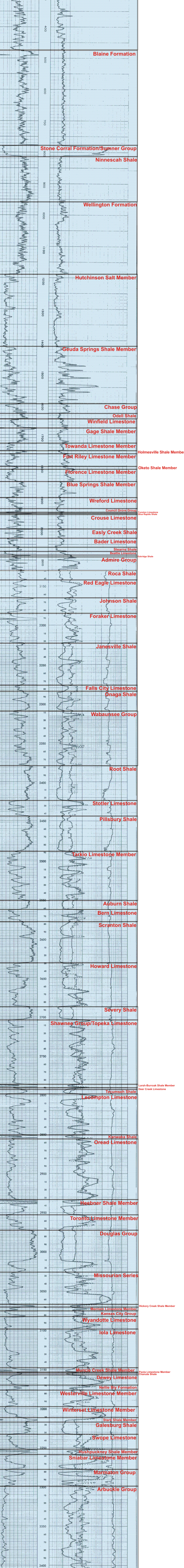
GAMMA RAY		NEUTRON	
API UNITS	3539	API UNITS	76
API UNITS	2100	API UNITS	76
API UNITS	2100	API UNITS	76

GAMMA RAY		NEUTRON	
API UNITS	3539	API UNITS	76
API UNITS	2100	API UNITS	76
API UNITS	2100	API UNITS	76

GAMMA RAY		NEUTRON	
API UNITS	3539	API UNITS	76
API UNITS	2100	API UNITS	76
API UNITS	2100	API UNITS	76

GAMMA RAY		NEUTRON	
API UNITS	3539	API UNITS	76
API UNITS	2100	API UNITS	76
API UNITS	2100	API UNITS	76

GAMMA RAY		NEUTRON	
API UNITS	3539	API UNITS	76
API UNITS	2100	API UNITS	76
API UNITS	2100	API UNITS	76



GREENHORN LIMESTONE

GRANEROS SHALE

DAKOTA FORMATION

BLAINE FORMATION

STONE CORRAL FORMATION/SUMNER GROUP

NINESCAH SHALE

WELLINGTON FORMATION

HUTCHINSON SALT MEMBER

GEUDA SPRINGS SHALE MEMBER

CHASE GROUP

ODDELL SHALE

WINFIELD LIMESTONE

GAGE SHALE MEMBER

TOWANDA LIMESTONE MEMBER

FORT RILEY LIMESTONE MEMBER

FLORENCE LIMESTONE MEMBER

BLUE SPRINGS SHALE MEMBER

WREFOED LIMESTONE

COUNCIL GROVE GROUP

FUNSTON LIMESTONE

BLUE RAPIDS SHALE

CROUSE LIMESTONE

EASLEY CREEK SHALE

BADER LIMESTONE

STEARNS SHALE

BEATTIE LIMESTONE

ADMIRE GROUP

ESKRIDGE SHALE

ROCA SHALE

RED EAGLE LIMESTONE

JOHNSON SHALE

FORAKER LIMESTONE

JANESVILLE SHALE

FALLS CITY LIMESTONE

ONAGA SHALE

WABAUNSEE GROUP

ROOT SHALE

STOTLER LIMESTONE

PILLSBURY SHALE

TARKIO LIMESTONE MEMBER

AUBURN SHALE

BERN LIMESTONE

SCRANTON SHALE

HOWARD LIMESTONE

SEVERY SHALE

SHAWNEE GROUP/TOPEKA LIMESTONE

TEGUMSEH SHALE

LARSH-BURROAK SHALE MEMBER

DEER CREEK LIMESTONE

LECOMPTON LIMESTONE

KANWAKA SHALE

OREAD LIMESTONE

HEEBNER SHALE MEMBER

TORONTO LIMESTONE MEMBER

DOUGLAS GROUP

MISSOURIAN SERIES

MERRIAM LIMESTONE MEMBER

KANSAS CITY GROUP

HICKORY CREEK SHALE MEMBER

WYANDOTTE LIMESTONE

IOLA LIMESTONE

MUNCIE CREEK SHALE MEMBER

POCAHONTAS LIMESTONE MEMBER

CHANUTE SHALE

DEWEY LIMESTONE

NELLIE PILY FORMATION

WESTERVILLE LIMESTONE MEMBER

WINTERSSET LIMESTONE MEMBER

STARK SHALE MEMBER

GALESBURG SHALE

SWOPE LIMESTONE

HUSHPUCKNEY SHALE MEMBER

SNIABAR LIMESTONE MEMBER

MARMATON GROUP

ARBUCKLE GROUP