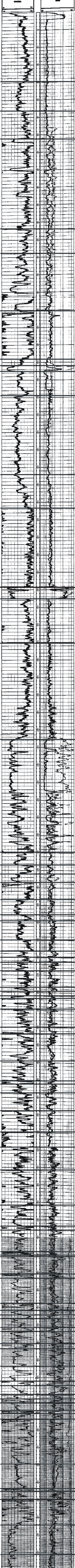


15-135-21452
Schaben
4



- Greenhorn Limestone
- Graneros Shale
- Dakota Formation
- Kiowa Shale
- Cheyenne Sandstone
- Whitehorse Formation
- Nippewalla Group/Dog Creek Formation
- Blaine Formation
- Flower Pot Shale
- Cedar Hills Sandstone
- Salt Plain Formation
- Harper Sandstone
- Stone Corral Formation
- Ninnescah Shale
- Wellington Formation
- Hutchinson Salt Member
- Chase Group/Nolans Limestone
- Odell Shale
- Winfield Limestone
- Gage Shale Member
- Towanda Limestone Member
- Holmesville Sh. Member
- Fort Riley Limestone
- Blue Springs Sh. Mbr.
- Wreford Limestone
- Council Grove Group
- Funston Shale
- Blue Rapids Shale
- Crouse Limestone
- Easley Creek shale
- Stearns Shale
- Beattie Limestone
- Eskridge Shale
- Grenola Limestone
- Red Eagle Limestone
- Johnson Shale
- Foraker Limestone
- Admire Group
- Wabaunsee Group
- Root Shale
- Stotler Limestone
- Nemaha Subgroup
- Shawnee Group/
Topeka Limestone
- Calhoun Shale
- Deer Creek Limestone
- Larsh-Burroak Sh. Mbr.
- Tecumseh Shale
- Lecompton Limestone
- Kanwaka Shale
- Oread Limestone
- Heebner Shale Mbr.
- Toronto Limestone Mbr.
- Douglas Group
- Lansing Group
- Vilas Shale
- Plattsburg Limestone
- Lane Shale
- Kansas City Group
- Iola limestone
- Chanute Shale
- Cherryvale Formation
- Dennis Limestone
- Stark Shale Mbr.
- Swope Limestone
- Hushpuckney Shale Mbr.
- Hertha Limestone
- Marmaton Group
- Pawnee Limestone
- Labette Shale
- Fort Scott Limestone
- Cherokee Group
- Mississippian System
Warsaw Limestone
- Osagian Stage