



DRILL STEM TEST REPORT

Prepared For: **GRAND MESA OPERATING COMPANY**

1700 N WATERFRONT PKWY BLDG 600
WICHITA KS 67206

ATTN: BOB PETERSON

26-12S-32W LOGAN

G ANDERSEN 2-26

Start Date: 2010.10.09 @ 06:00:00

End Date: 2010.10.09 @ 15:42:00

Job Ticket #: 1034 DST #: 6

Eagle Testers LLC.

P.O.Box 1011, Great Bend, KS 67530

620-617-7548

Printed: 2010.10.09 @ 07:06:23

GRAND MESA OPERATING COMPANY

G ANDERSEN 2-26

26-12S-32W LOGAN

DST # 6

JOHNSON

2010.10.09



DRILL STEM TEST REPORT

GRAND MESA OPERATING COMPANY

G ANDERSEN 2-26

1700 N WATERFRONT PKWY BLDG 600
WICHITA KS 67206

26-12S-32W LOGAN

Job Ticket: 1034

DST#: 6

ATTN: BOB PETERSON

Test Start: 2010.10.09 @ 06:00:00

GENERAL INFORMATION:

Formation: **JOHNSON**

Deviated: No Whipstock: ft (KB)

Time Tool Opened: 08:30:00

Time Test Ended: 15:42:00

Test Type: Conventional Bottom Hole (Initial)

Tester: DAVID NICHOLS

Unit No: 15 70 MRT SCOTT CIT

Interval: 4532.00 ft (KB) To 4586.00 ft (KB) (TVD)

Reference Elevations: 2995.00 ft (KB)

Total Depth: 4586.00 ft (KB) (TVD)

2990.00 ft (CF)

Hole Diameter: 7.88 inches Hole Condition: Fair

KB to GR/CF: 5.00 ft

Serial #: 6666

Inside

Press @ Run Depth: 208.87 psig @ 4582.00 ft (KB)

Capacity: 5000.00 psig

Start Date: 2010.10.09 End Date: 2010.10.09

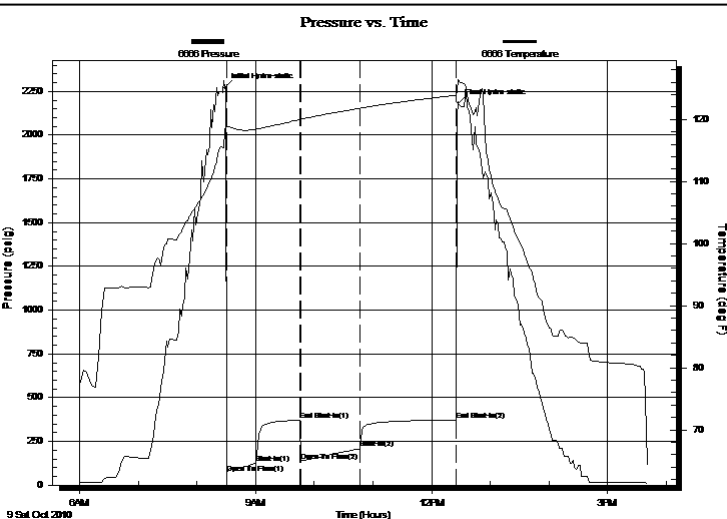
Last Calib.: 2010.10.09

Start Time: 06:00:00 End Time: 15:42:00

Time On Btm: 2010.10.09 @ 08:28:30

Time Off Btm: 2010.10.09 @ 12:27:30

TEST COMMENT: 30-INITIAL OPENING GOOD BLOW BOTTOM BUCKET IN 5 MINS
45-INITIAL SHUT IN FAIR BLOW BACK
60-FINAL OPENING GOOD BLOW BOTTOM BUCKET IN 3 MINS
90FINAL SHUT IN FAIR BLOW BACK



PRESSURE SUMMARY

Time (Min.)	Pressure (psig)	Temp (deg F)	Annotation
0	2271.44	118.16	Initial Hydro-static
2	67.43	118.77	Open To Flow (1)
32	124.18	118.39	Shut-In(1)
77	371.04	119.97	End Shut-In(1)
78	135.68	119.98	Open To Flow (2)
138	208.87	121.78	Shut-In(2)
237	372.56	123.88	End Shut-In(2)
239	2182.52	126.44	Final Hydro-static

Recovery

Length (ft)	Description	Volume (bbl)
1400.00	GAS IN PIPE 100%GAS	19.31
320.00	GASSY OIL 30%GAS70%OIL	4.68
60.00	MUD CUT OIL 20%MUD 80%OIL	0.88

Gas Rates

	Choke (inches)	Pressure (psig)	Gas Rate (Mcf/d)



DRILL STEM TEST REPORT

GRAND MESA OPERATING COMPANY

G ANDERSEN 2-26

1700 N WATERFRONT PKWY BLDG 600
WICHITA KS 67206

26-12S-32W LOGAN

Job Ticket: 1034

DST#: 6

ATTN: BOB PETERSON

Test Start: 2010.10.09 @ 06:00:00

GENERAL INFORMATION:

Formation: **JOHNSON**

Deviated: No Whipstock: ft (KB)

Time Tool Opened: 08:30:00

Time Test Ended: 15:42:00

Test Type: Conventional Bottom Hole (Initial)

Tester: DAVID NICHOLS

Unit No: 15 70 MRT SCOTT CIT

Interval: 4532.00 ft (KB) To 4586.00 ft (KB) (TVD)

Reference Elevations: 2995.00 ft (KB)

Total Depth: 4586.00 ft (KB) (TVD)

2990.00 ft (CF)

Hole Diameter: 7.88 inches Hole Condition: Fair

KB to GR/CF: 5.00 ft

Serial #: 6651 Outside

Press @ Run Depth: 374.62 psig @ 4583.00 ft (KB)

Capacity: 5000.00 psig

Start Date: 2010.10.09 End Date: 2010.10.09

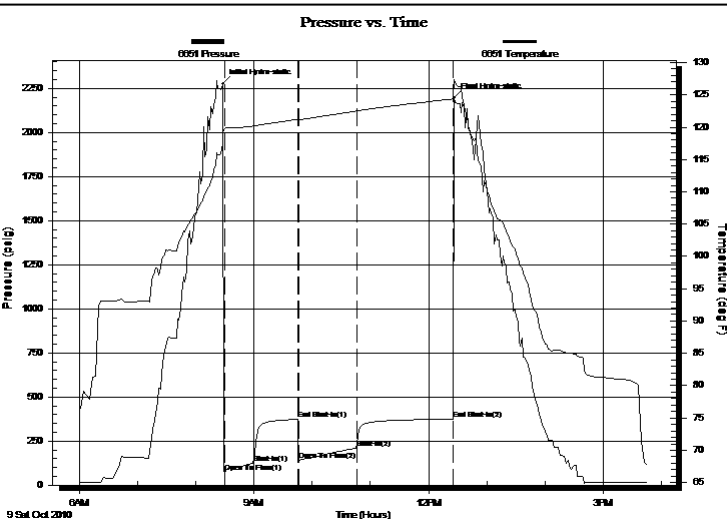
Last Calib.: 2010.10.09

Start Time: 06:00:00 End Time: 15:47:00

Time On Btm: 2010.10.09 @ 08:28:00

Time Off Btm: 2010.10.09 @ 12:26:30

TEST COMMENT: 30-INITIAL OPENING GOOD BLOW BOTTOM BUCKET IN 5 MINS
45-INITIAL SHUT IN FAIR BLOW BACK
60-FINAL OPENING GOOD BLOW BOTTOM BUCKET IN 3 MINS
90FINAL SHUT IN FAIR BLOW BACK



PRESSURE SUMMARY

Time (Min.)	Pressure (psig)	Temp (deg F)	Annotation
0	2275.94	119.17	Initial Hydro-static
2	74.00	119.79	Open To Flow (1)
32	126.02	120.17	Shut-In(1)
77	373.09	121.21	End Shut-In(1)
78	140.59	121.16	Open To Flow (2)
138	212.00	122.49	Shut-In(2)
237	374.62	124.36	End Shut-In(2)
239	2197.71	127.39	Final Hydro-static

Recovery

Length (ft)	Description	Volume (bbl)
1400.00	GAS IN PIPE 100%GAS	19.31
320.00	GASSY OIL 30%GAS70%OIL	4.68
60.00	MUD CUT OIL 20%MUD 80%OIL	0.88

Gas Rates

	Choke (inches)	Pressure (psig)	Gas Rate (Mcf/d)



DRILL STEM TEST REPORT

TOOL DIAGRAM

GRAND MESA OPERATING COMPANY

G ANDERSEN 2-26

1700 N WATERFRONT PKWY BLDG 600
WICHITA KS 67206

26-12S-32W LOGAN

Job Ticket: 1034

DST#: 6

ATTN: BOB PETERSON

Test Start: 2010.10.09 @ 06:00:00

Tool Information

Drill Pipe:	Length: 4390.00 ft	Diameter: 3.88 inches	Volume: 64.20 bbl	Tool Weight: 2000.00 lb
Heavy Wt. Pipe:	Length: 0.00 ft	Diameter: 0.00 inches	Volume: 0.00 bbl	Weight set on Packer: 20000.00 lb
Drill Collar:	Length: 120.00 ft	Diameter: 2.25 inches	Volume: 0.59 bbl	Weight to Pull Loose: 70000.00 lb
			<u>Total Volume: 64.79 bbl</u>	Tool Chased 0.00 ft
Drill Pipe Above KB:	1.00 ft			String Weight: Initial 50000.00 lb
Depth to Top Packer:	4532.00 ft			Final 56000.00 lb
Depth to Bottom Packer:	ft			
Interval between Packers:	54.00 ft			
Tool Length:	77.00 ft			
Number of Packers:	2	Diameter: 6.75 inches		

Tool Comments:

Tool Description	Length (ft)	Serial No.	Position	Depth (ft)	Accum. Lengths
SHUT IN TOOL	5.00			4514.00	
HYD S.I. Tool	5.00			4519.00	
jars	6.00			4525.00	
safty joint	2.00			4527.00	
TRAVEL COLER	2.00			4529.00	
Packer	3.00			4532.00	23.00 Bottom Of Top Packer
travel collar	2.00			4534.00	54.00 Tool Interval
Packer	3.00			4537.00	
change over sub	0.75			4537.75	
drill pipe	31.50			4569.25	
change over sub	0.75			4570.00	
Perforations	11.00			4581.00	
Recorder	1.00	6666	Inside	4582.00	
Recorder	1.00	6651	Outside	4583.00	
bull plug	3.00			4586.00	1000076.00 Bottom Packers & Anchor

Total Tool Length: 77.00



DRILL STEM TEST REPORT

FLUID SUMMARY

GRAND MESA OPERATING COMPANY
1700 N WATERFRONT PKWY BLDG 600
WICHITA KS 67206
ATTN: BOB PETERSON

G ANDERSEN 2-26
26-12S-32W LOGAN
Job Ticket: 1034 **DST#: 6**
Test Start: 2010.10.09 @ 06:00:00

Mud and Cushion Information

Mud Type: Gel Chem	Cushion Type:	Oil API: 29 deg API
Mud Weight: 9.00 lb/gal	Cushion Length: ft	Water Salinity: ppm
Viscosity: 57.00 sec/qt	Cushion Volume: bbl	
Water Loss: 8.80 in ³	Gas Cushion Type:	
Resistivity: ohm.m	Gas Cushion Pressure: psig	
Salinity: 2500.00 ppm		
Filter Cake: inches		

Recovery Information

Recovery Table

Length ft	Description	Volume bbl
1400.00	GAS IN PIPE 100%GAS	19.309
320.00	GASSY OIL 30%GAS70%OIL	4.680
60.00	MUD CUT OIL 20%MUD 80%OIL	0.877

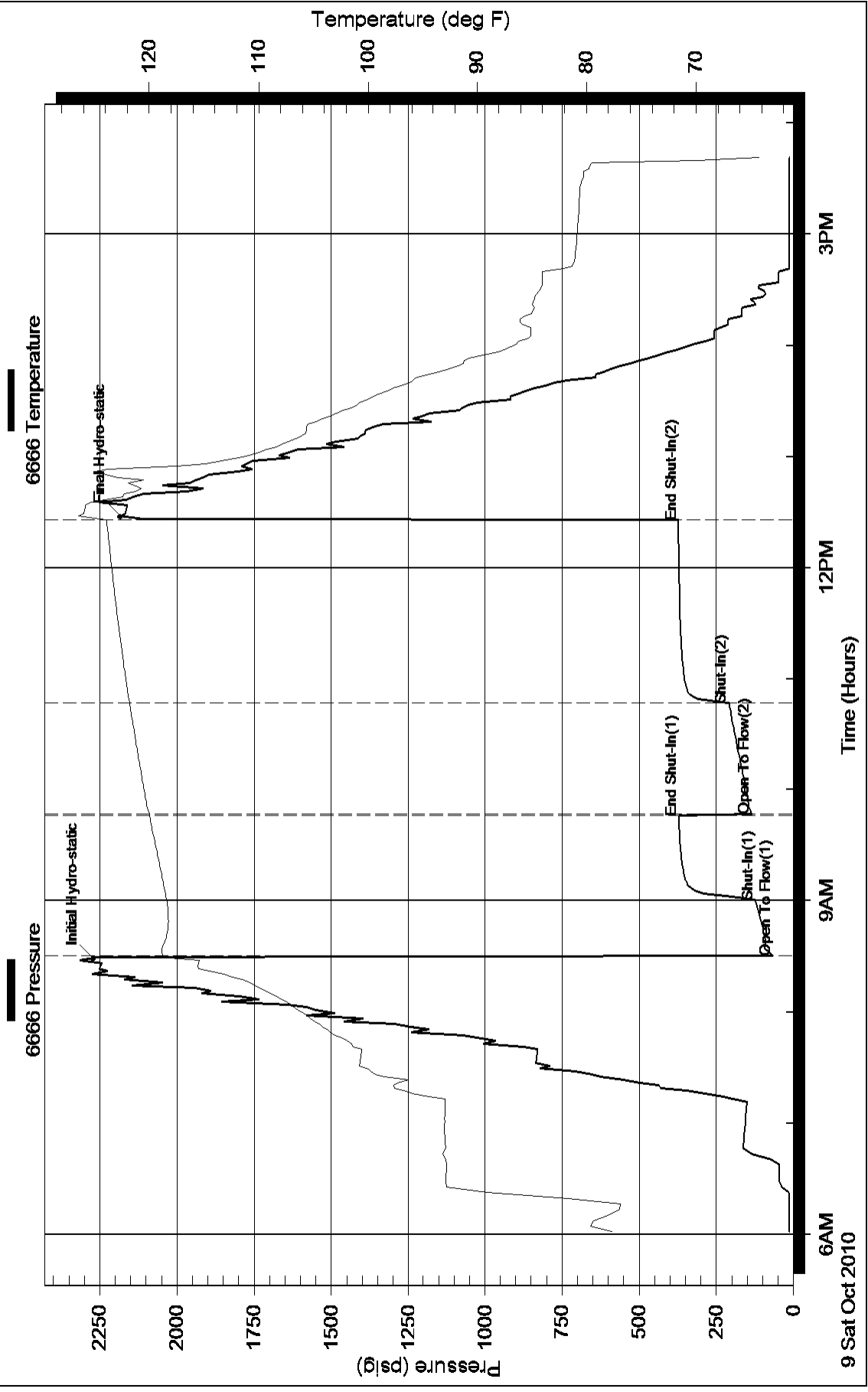
Total Length: 1780.00 ft Total Volume: 24.866 bbl

Num Fluid Samples: 0 Num Gas Bombs: 0 Serial #:

Laboratory Name: Laboratory Location:

Recovery Comments:

Pressure vs. Time



Pressure vs. Time

