

## DRILL STEM TEST REPORT

Prepared For: **Sam Gary Jr.and assoc. Inc.**

1515 Wynkoop St.  
Suite 700  
Denver Co.80202

ATTN: Neil Sharp

**6-21s-10w Rice**

**Wells Trust 1-16**

Start Date: 2010.09.05 @ 20:20:05

End Date: 2010.09.06 @ 05:47:10

Job Ticket #: 040383      DST #: 4

Trilobite Testing, Inc

PO Box 362 Hays, KS 67601  
ph: 785-625-4778 fax: 785-625-5620

Sam Gary Jr.and assoc. Inc.

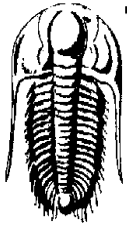
Wells Trust 1-16

6-21s-10w Rice

DST # 4

Arbuckle

2010.09.05



**TRILOBITE TESTING, INC**

# DRILL STEM TEST REPORT

Sam Gary Jr. and assoc. Inc.  
 1515 Wynkoop St.  
 Suite 700  
 Denver Co. 80202  
 ATTN: Neil Sharp

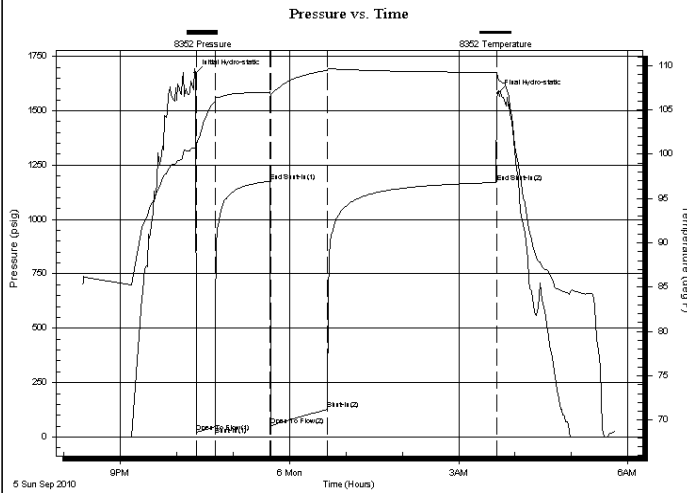
**Wells Trust 1-16**  
**6-21s-10w Rice**  
 Job Ticket: 040383 **DST#: 4**  
 Test Start: 2010.09.05 @ 20:20:05

## GENERAL INFORMATION:

Formation: **Arbuckle**  
 Deviated: No Whipstock: ft (KB)  
 Time Tool Opened: 22:20:40  
 Time Test Ended: 05:47:10  
 Test Type: Conventional Bottom Hole  
 Tester: Andy Carreira  
 Unit No: 31  
 Interval: **3394.00 ft (KB) To 3404.00 ft (KB) (TVD)**  
 Total Depth: 3404.00 ft (KB) (TVD)  
 Hole Diameter: 7.88 inches Hole Condition: Fair  
 Reference Elevations: 1739.00 ft (KB)  
 1729.00 ft (CF)  
 KB to GR/CF: 10.00 ft

**Serial #: 8352** **Outside**  
 Press@RunDepth: 128.06 psig @ 3395.00 ft (KB) Capacity: 8000.00 psig  
 Start Date: 2010.09.05 End Date: 2010.09.06 Last Calib.: 2010.09.06  
 Start Time: 20:20:05 End Time: 05:47:09 Time On Btm: 2010.09.05 @ 22:20:00  
 Time Off Btm: 2010.09.06 @ 03:41:39

TEST COMMENT: IF: Fair, 4 inches  
 IS: No Return  
 FF: BOB, 50 min.  
 FS: No Return



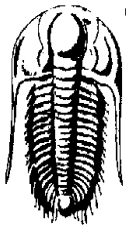
PRESSURE SUMMARY			
Time (Min.)	Pressure (psig)	Temp (deg F)	Annotation
0	1671.94	100.84	Initial Hydro-static
1	22.38	100.33	Open To Flow (1)
21	47.96	106.01	Shut-In(1)
80	1175.80	107.01	End Shut-In(1)
80	51.49	106.57	Open To Flow (2)
141	128.06	109.45	Shut-In(2)
321	1170.06	109.24	End Shut-In(2)
322	1579.38	108.68	Final Hydro-static

## Recovery

Length (ft)	Description	Volume (bbl)
250.00	SW sw =100%	3.51

## Gas Rates

Choke (inches)	Pressure (psig)	Gas Rate (MMcf/d)



**TRILOBITE TESTING, INC**

# DRILL STEM TEST REPORT

Sam Gary Jr. and assoc. Inc.

**Wells Trust 1-16**

1515 Wynkoop St.  
Suite 700  
Denver Co. 80202  
ATTN: Neil Sharp

**6-21s-10w Rice**

Job Ticket: 040383 **DST#: 4**  
Test Start: 2010.09.05 @ 20:20:05

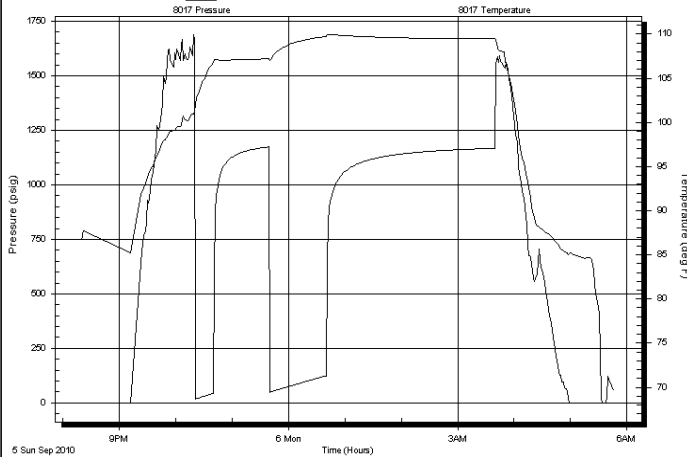
**GENERAL INFORMATION:**

Formation: **Arbuckle**  
 Deviated: No Whipstock: ft (KB)  
 Time Tool Opened: 22:20:40  
 Time Test Ended: 05:47:10  
**Interval: 3394.00 ft (KB) To 3404.00 ft (KB) (TVD)**  
 Total Depth: 3404.00 ft (KB) (TVD)  
 Hole Diameter: 7.88 inches Hole Condition: Fair  
 Test Type: Conventional Bottom Hole  
 Tester: Andy Carreira  
 Unit No: 31  
 Reference Elevations: 1739.00 ft (KB)  
 1729.00 ft (CF)  
 KB to GR/CF: 10.00 ft

**Serial #: 8017** Inside  
 Press @ Run Depth: psig @ 3395.00 ft (KB) Capacity: 8000.00 psig  
 Start Date: 2010.09.05 End Date: 2010.09.06 Last Calib.: 2010.09.06  
 Start Time: 20:20:05 End Time: 05:47:09 Time On Btm:  
 Time Off Btm:

**TEST COMMENT:** IF: Fair, 4 inches  
 IS: No Return  
 FF: BOB, 50 min.  
 FS: No Return

Pressure vs. Time



**PRESSURE SUMMARY**

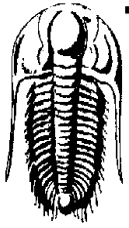
Time (Min.)	Pressure (psig)	Temp (deg F)	Annotation

**Recovery**

Length (ft)	Description	Volume (bbl)
250.00	SW sw =100%	3.51

**Gas Rates**

	Choke (inches)	Pressure (psig)	Gas Rate (MMcf/d)



**TRILOBITE  
TESTING, INC.**

## DRILL STEM TEST REPORT

**TOOL DIAGRAM**

Sam Gary Jr. and assoc. Inc.

1515 Wynkoop St.  
Suite 700  
Denver Co. 80202  
ATTN: Neil Sharp

**Wells Trust 1-16**

**6-21s-10w Rice**

Job Ticket: 040383

**DST#: 4**

Test Start: 2010.09.05 @ 20:20:05

### Tool Information

Drill Pipe:	Length: 3378.00 ft	Diameter: 3.80 inches	Volume: 47.38 bbl	Tool Weight: 3000.00 lb
Heavy Wt. Pipe:	Length: 0.00 ft	Diameter: 2.70 inches	Volume: 0.00 bbl	Weight set on Packer: 25000.00 lb
Drill Collar:	Length: 0.00 ft	Diameter: 2.25 inches	Volume: 0.00 bbl	Weight to Pull Loose: 50000.00 lb
			<u>Total Volume: 47.38 bbl</u>	Tool Chased 0.00 ft
Drill Pipe Above KB:	12.00 ft			String Weight: Initial 44000.00 lb
Depth to Top Packer:	3394.00 ft			Final 46000.00 lb
Depth to Bottom Packer:	ft			
Interval between Packers:	10.00 ft			
Tool Length:	38.00 ft			
Number of Packers:	2	Diameter: 6.75 inches		

Tool Comments:

Tool Description	Length (ft)	Serial No.	Position	Depth (ft)	Accum. Lengths
Change Over Sub	1.00			3367.00	
Shut In Tool	5.00			3372.00	
Hydraulic tool	5.00			3377.00	
Jars	5.00			3382.00	
Safety Joint	3.00			3385.00	
Packer	5.00			3390.00	28.00 Bottom Of Top Packer
Packer	4.00			3394.00	
Stubb	1.00			3395.00	
Recorder	0.00	8017	Inside	3395.00	
Recorder	0.00	8352	Outside	3395.00	
Perforations	6.00			3401.00	
Bullnose	3.00			3404.00	10.00 Bottom Packers & Anchor

**Total Tool Length: 38.00**



**TRILOBITE**  
TESTING, INC

# DRILL STEM TEST REPORT

**FLUID SUMMARY**

Sam Gary Jr. and assoc. Inc.

**Wells Trust 1-16**

1515 Wynkoop St.  
Suite 700  
Denver Co. 80202  
ATTN: Neil Sharp

**6-21s-10w Rice**

Job Ticket: 040383

**DST#: 4**

Test Start: 2010.09.05 @ 20:20:05

## Mud and Cushion Information

Mud Type: Gel Chem	Cushion Type:	Oil API:	deg API
Mud Weight: 9.00 lb/gal	Cushion Length: ft	Water Salinity:	20000 ppm
Viscosity: 56.00 sec/qt	Cushion Volume: bbl		
Water Loss: 10.39 in <sup>3</sup>	Gas Cushion Type:		
Resistivity: ohm.m	Gas Cushion Pressure: psig		
Salinity: 7400.00 ppm			
Filter Cake: inches			

## Recovery Information

Recovery Table

Length ft	Description	Volume bbl
250.00	SW sw =100%	3.507

Total Length: 250.00 ft      Total Volume: 3.507 bbl

Num Fluid Samples: 0

Num Gas Bombs: 0

Serial #:

Laboratory Name:

Laboratory Location:

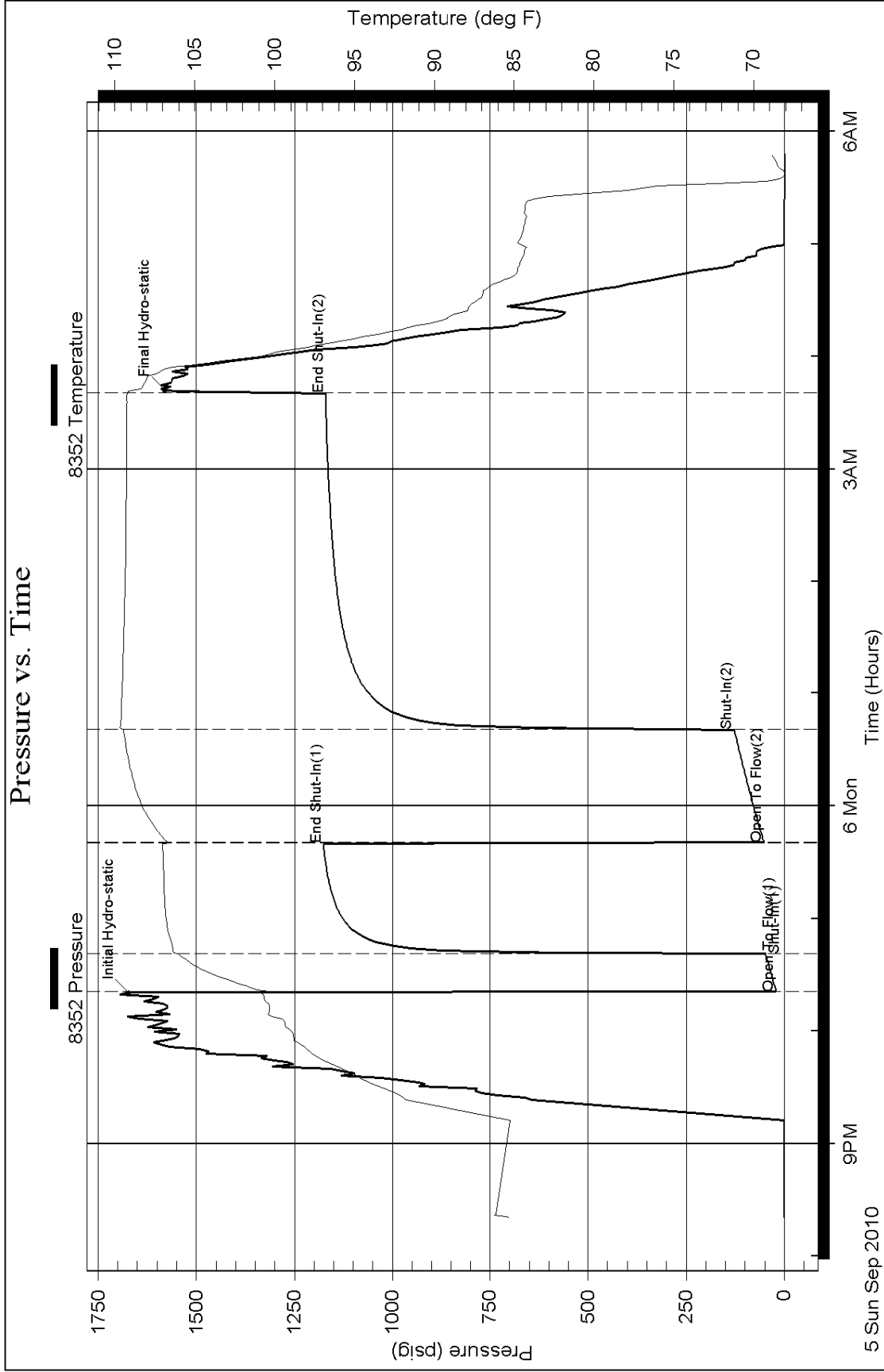
Recovery Comments:

Serial #: 8352

Outside Sam Gary Jr. and assoc. Inc.

6-21s-10w Rice

DST Test Number: 4



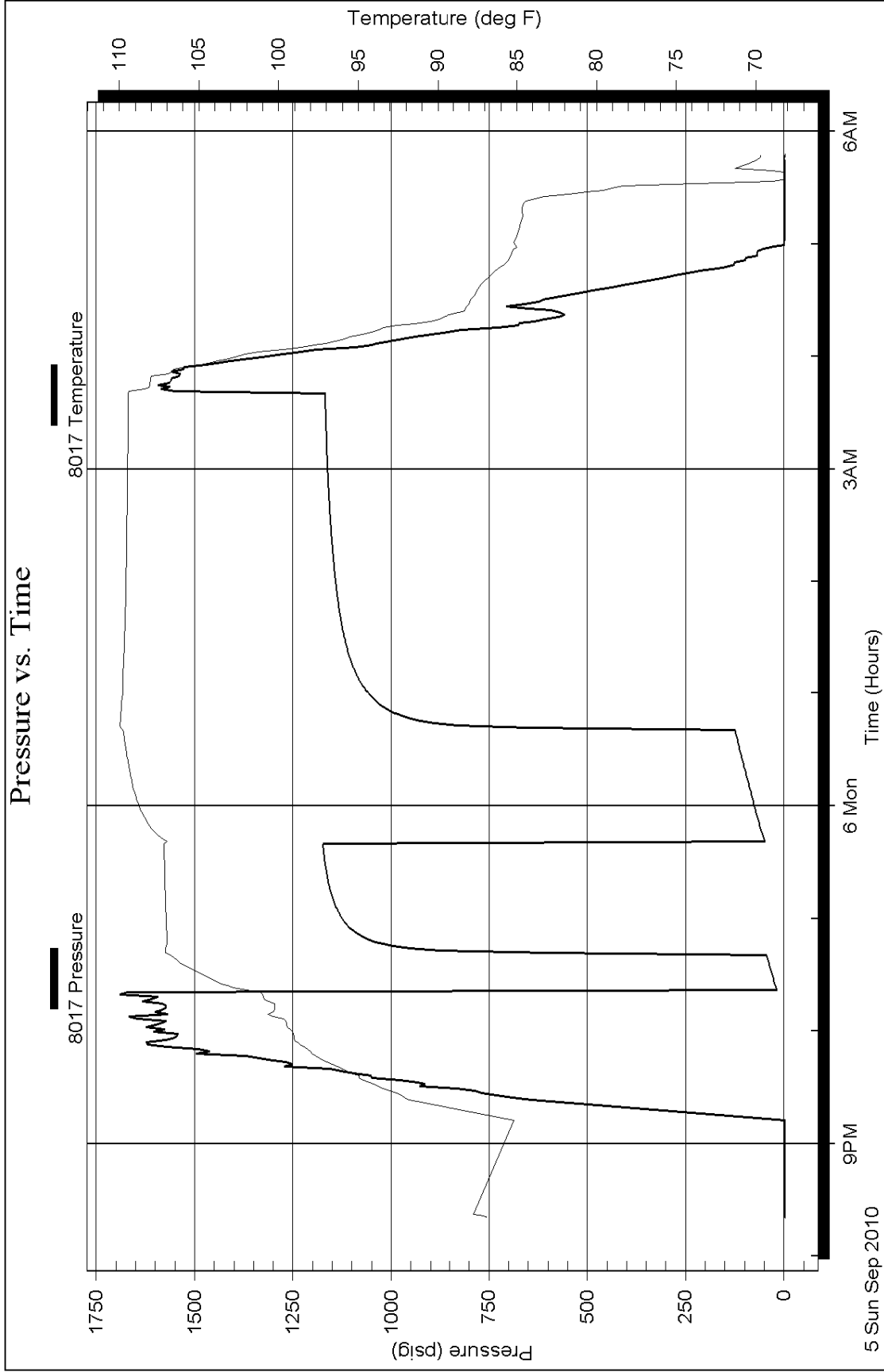
Serial #: 8017

Inside

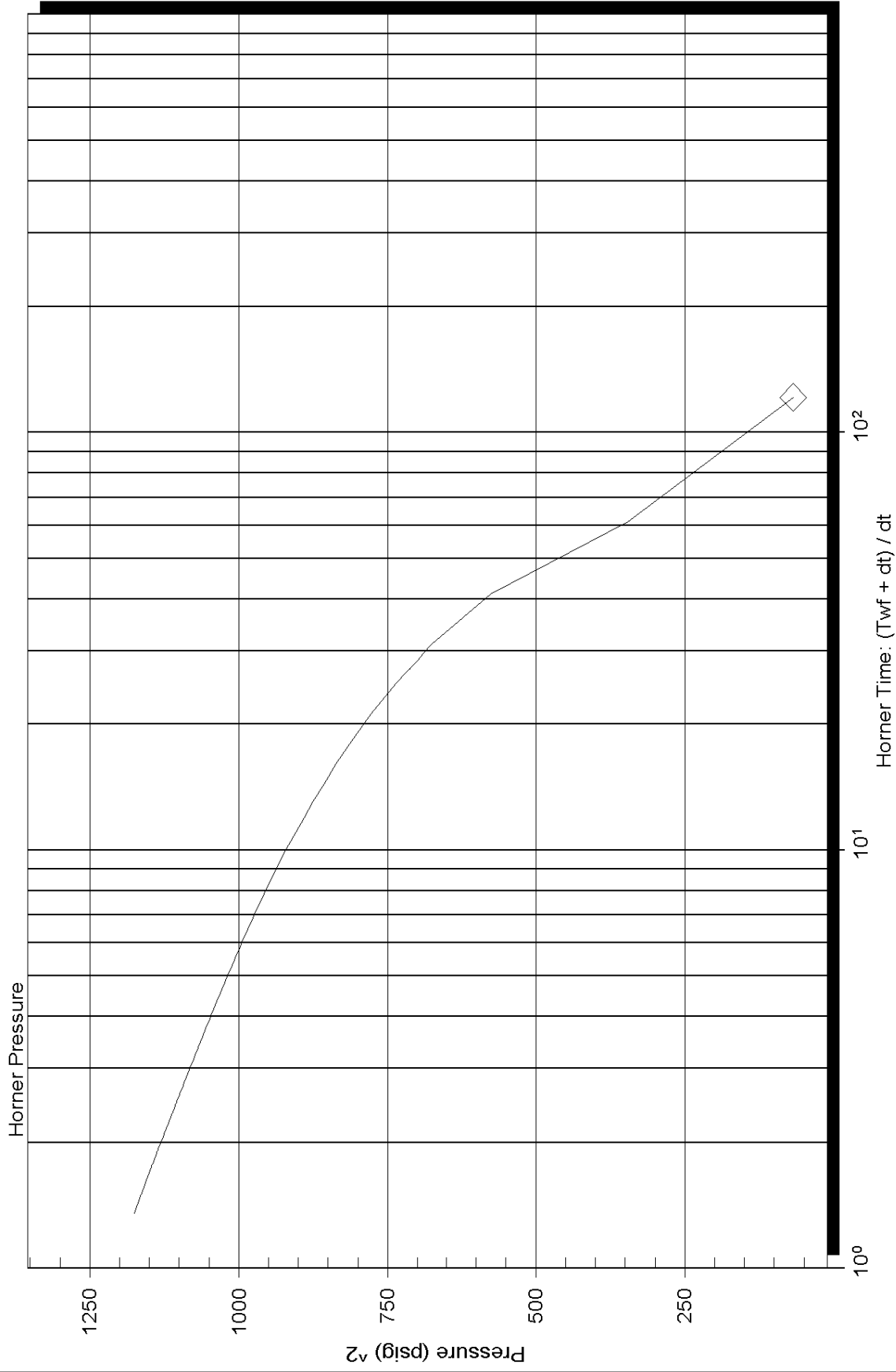
Sam Gary Jr. and assoc. Inc.

6-21s-10w Rice

DST Test Number: 4

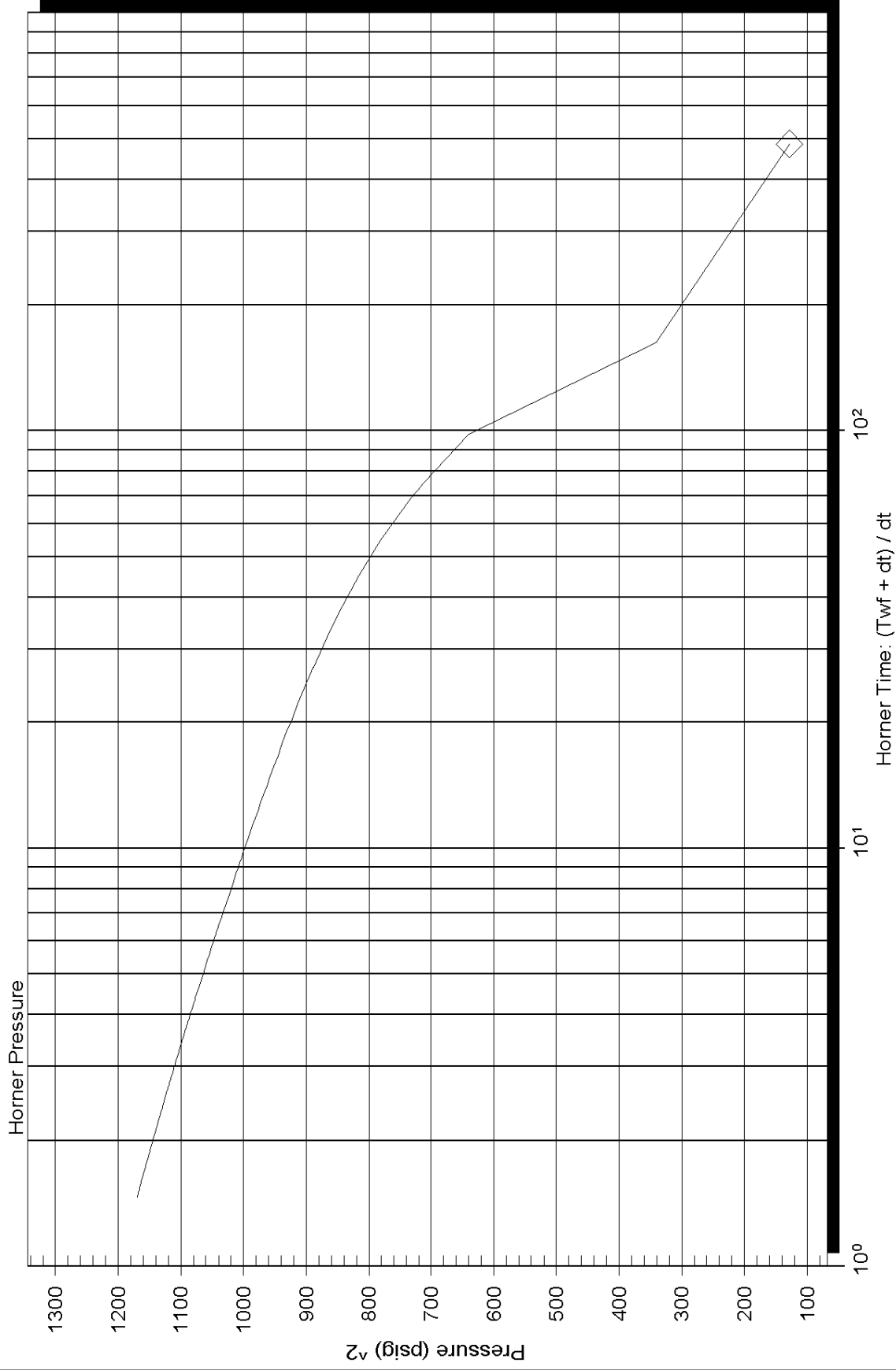


### Horner Plot

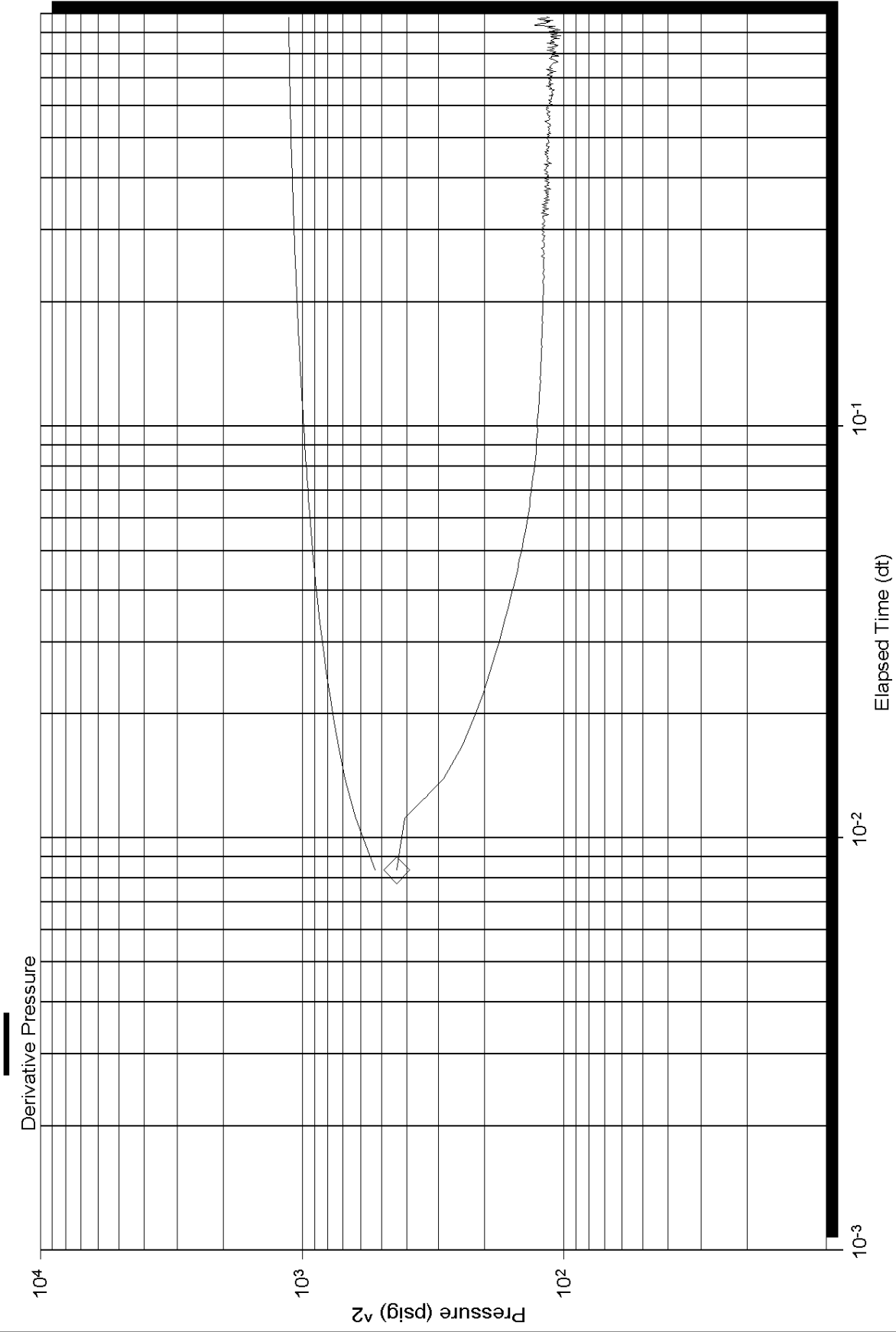




### Horner Plot



# Log-Log and Pseudo-Log-Derivative



# Log-Log and Pseudo-Log-Derivative

