



**TRILOBITE
TESTING, INC**

DRILL STEM TEST REPORT

Woolsey Operating Co.LLC

Lewis#1

125 N.Market,Ste.1000
Wichita ks.67202

23-34s-9w Harper Ks.

ATTN: Bill Klaver

Job Ticket: 039219

DST#: 1

Test Start: 2010.11.04 @ 01:50:10

GENERAL INFORMATION:

Formation: **Miss.**

Deviated: No Whipstock: ft (KB)

Time Tool Opened: 03:43:10

Time Test Ended: 10:34:25

Test Type: Conventional Bottom Hole

Tester: Gary Pevoteaux

Unit No: 45

Interval: 4598.00 ft (KB) To 4618.00 ft (KB) (TVD)

Reference Elevations: 1289.00 ft (KB)

Total Depth: 4618.00 ft (KB) (TVD)

1278.00 ft (CF)

Hole Diameter: 7.88 inches Hole Condition: Fair

KB to GR/CF: 11.00 ft

Serial #: 6798

Inside

Press @RunDepth: 70.34 psig @ 4599.00 ft (KB)

Capacity: 8000.00 psig

Start Date: 2010.11.04

End Date:

2010.11.04

Last Calib.:

2010.11.04

Start Time:

01:50:11

End Time:

10:34:25

Time On Btm:

2010.11.04 @ 03:38:10

Time Off Btm:

2010.11.04 @ 08:16:40

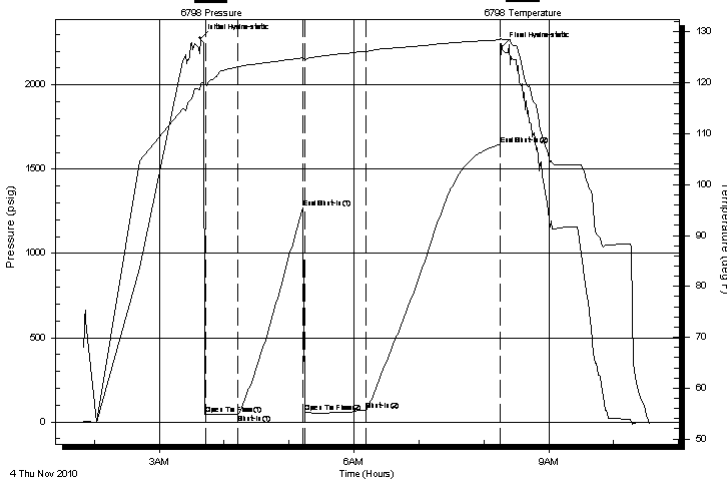
TEST COMMENT: IF:Fair to strong blow . B.O.B. in 12 1/2 mins.

IS:No blow .

FF:Strong blow . B.O.B. in 2 - 3 secs.

FS:No blow .

Pressure vs. Time



PRESSURE SUMMARY

Time (Min.)	Pressure (psig)	Temp (deg F)	Annotation
0	2275.71	119.56	Initial Hydro-static
5	44.16	119.71	Open To Flow (1)
35	47.78	123.14	Shut-In(1)
95	1270.92	124.92	End Shut-In(1)
96	58.21	124.62	Open To Flow (2)
154	70.34	126.14	Shut-In(2)
277	1647.20	128.47	End Shut-In(2)
279	2228.25	128.57	Final Hydro-static

Recovery

Length (ft)	Description	Volume (bbl)
55.00	GOCM 22%g 18%o 60%m	0.50
0.00	2590 ft.of GIP	0.00

Gas Rates

	Choke (inches)	Pressure (psig)	Gas Rate (Mcf/d)



**TRILOBITE
TESTING, INC**

DRILL STEM TEST REPORT

FLUID SUMMARY

Woolsey Operating Co.LLC

Lewis#1

125 N.Market,Ste.1000
Wichita ks.67202

23-34s-9w Harper Ks.

Job Ticket: 039219

DST#: 1

ATTN: Bill Klaver

Test Start: 2010.11.04 @ 01:50:10

Mud and Cushion Information

Mud Type: Gel Chem

Cushion Type:

Oil API:

deg API

Mud Weight: 9.00 lb/gal

Cushion Length:

ft

Water Salinity:

5000 ppm

Viscosity: 46.00 sec/qt

Cushion Volume:

bbbl

Water Loss: 9.19 in³

Gas Cushion Type:

Resistivity: 0.00 ohm.m

Gas Cushion Pressure:

psig

Salinity: 5000.00 ppm

Filter Cake: 0.20 inches

Recovery Information

Recovery Table

Length ft	Description	Volume bbl
55.00	GOCM 22%g 18%o 60%m	0.498
0.00	2590 ft.of GIP	0.000

Total Length: 55.00 ft Total Volume: 0.498 bbl

Num Fluid Samples: 0

Num Gas Bombs: 0

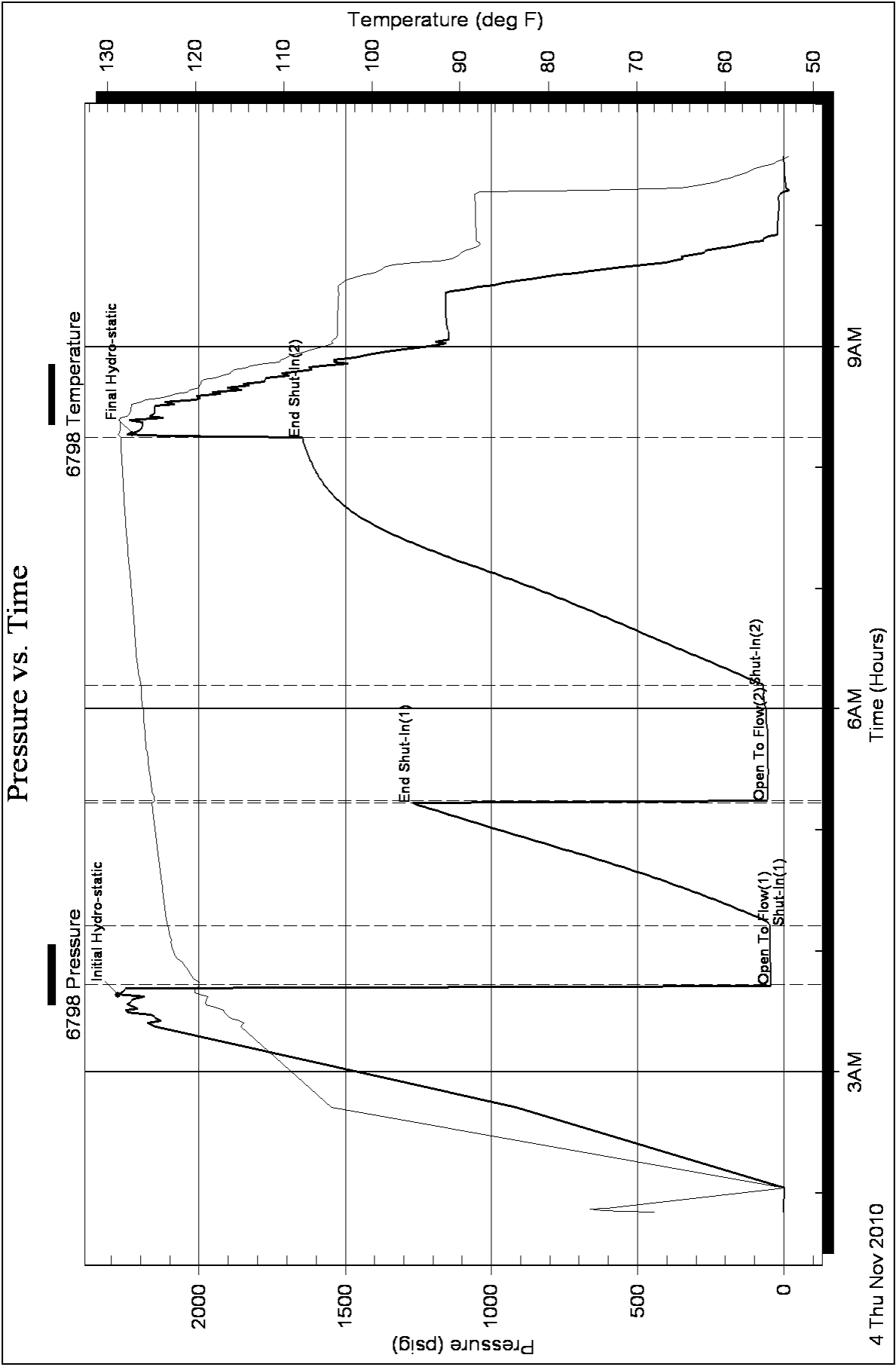
Serial #: none

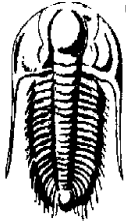
Laboratory Name:

Laboratory Location:

Recovery Comments:

Pressure vs. Time





TRILOBITE TESTING, INC.

DRILL STEM TEST REPORT

Woolseey Operating Co.LLC
 125 N.Market,Ste.1000
 Wichita ks.67202
 ATTN: Bill Klaver

Lewis#1
23-34s-9w Harper Ks.
 Job Ticket: 039220 **DST#: 2**
 Test Start: 2010.11.05 @ 02:10:30

GENERAL INFORMATION:

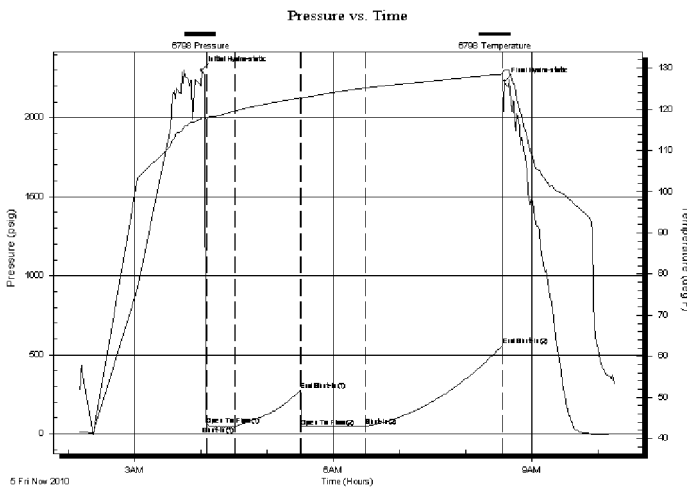
Formation: **Miss.**
 Deviated: No Whipstock: ft (KB)
 Time Tool Opened: 04:05:15
 Time Test Ended: 10:16:00
 Test Type: Conventional Bottom Hole
 Tester: Gary Pevoteaux
 Unit No: 45
 Interval: **4631.00 ft (KB) To 4685.00 ft (KB) (TVD)**
 Total Depth: 4685.00 ft (KB) (TVD)
 Hole Diameter: 7.88 inches Hole Condition: Poor
 Reference Elevations: 1289.00 ft (KB)
 1278.00 ft (CF)
 KB to GR/CF: 11.00 ft

Serial #: 6798

Inside

Press @RunDepth: 47.42 psig @ 4632.00 ft (KB) Capacity: 8000.00 psig
 Start Date: 2010.11.05 End Date: 2010.11.05 Last Calib.: 2010.11.05
 Start Time: 02:10:31 End Time: 10:16:00 Time On Btm: 2010.11.05 @ 04:00:45
 Time Off Btm: 2010.11.05 @ 08:35:15

TEST COMMENT: IF:Weak blow . Slow increase to 4".
 ISI:No blow .
 FF:Weak to fair blow . Slow increase to 6 1/2".
 FSI:No blow .



PRESSURE SUMMARY

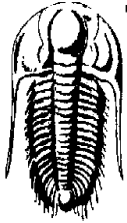
Time (Min.)	Pressure (psig)	Temp (deg F)	Annotation
0	2301.60	118.06	Initial Hydro-static
5	55.77	117.67	Open To Flow (1)
31	46.04	119.59	Shut-In(1)
90	274.39	122.84	End Shut-In(1)
91	43.93	122.76	Open To Flow (2)
149	47.42	125.19	Shut-In(2)
273	555.05	128.55	End Shut-In(2)
275	2230.73	129.51	Final Hydro-static

Recovery

Length (ft)	Description	Volume (bbl)
40.00	GCM w trace of oil 5%g 95%m	0.29
0.00	150 ft.of GIP	0.00

Gas Rates

	Choke (inches)	Pressure (psig)	Gas Rate (Mcf/d)



**TRILOBITE
TESTING, INC**

DRILL STEM TEST REPORT

FLUID SUMMARY

Woolseey Operating Co.LLC

Lewis#1

125 N.Market,Ste.1000
Wichita ks.67202

23-34s-9w Harper Ks.

Job Ticket: 039220

DST#: 2

ATTN: Bill Klaver

Test Start: 2010.11.05 @ 02:10:30

Mud and Cushion Information

Mud Type: Gel Chem

Cushion Type:

Oil API:

deg API

Mud Weight: 9.00 lb/gal

Cushion Length:

ft

Water Salinity:

3000 ppm

Viscosity: 60.00 sec/qt

Cushion Volume:

bbl

Water Loss: 8.99 in³

Gas Cushion Type:

Resistivity: 0.00 ohm.m

Gas Cushion Pressure:

psig

Salinity: 3000.00 ppm

Filter Cake: 0.20 inches

Recovery Information

Recovery Table

Length ft	Description	Volume bbl
40.00	GCM w trace of oil 5%g 95%m	0.288
0.00	150 ft.of GIP	0.000

Total Length: 40.00 ft Total Volume: 0.288 bbl

Num Fluid Samples: 0

Num Gas Bombs: 0

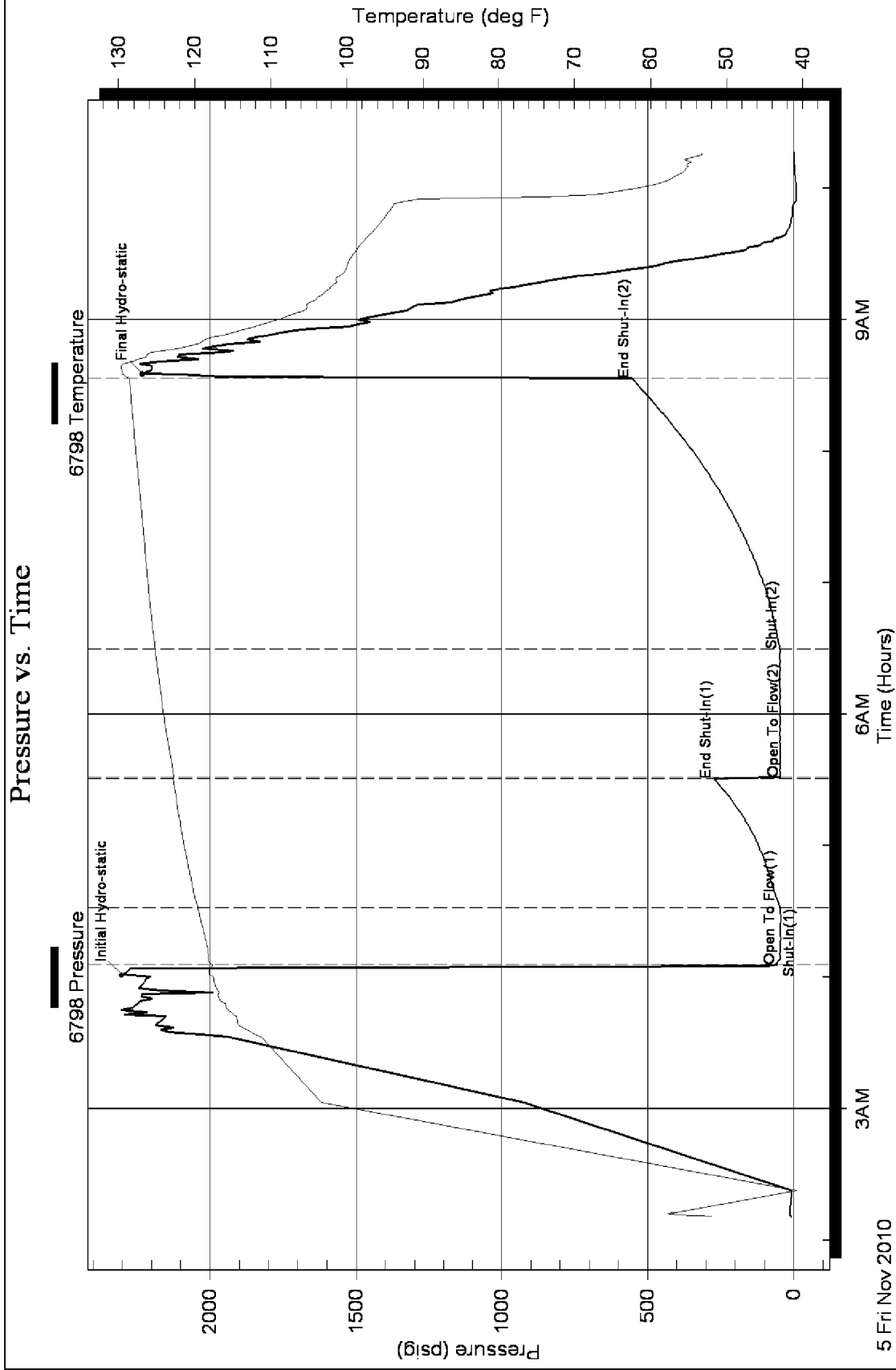
Serial #: none

Laboratory Name:

Laboratory Location:

Recovery Comments:

Pressure vs. Time





TRILOBITE TESTING, INC

DRILL STEM TEST REPORT

Woolseey Operating Co.LLC

Lewis#1

125 N.Market, Ste.1000
Wichita ks.67202

23-34s-9w Harper Ks.

Job Ticket: 039221

DST#: 3

ATTN: Bill Klaver

Test Start: 2010.11.05 @ 23:48:34

GENERAL INFORMATION:

Formation: **Miss.**

Deviated: No Whipstock: ft (KB)

Time Tool Opened: 01:49:04

Time Test Ended: 06:45:04

Test Type: Conventional Bottom Hole

Tester: Gary Pevoteaux

Unit No: 45

Interval: 4687.00 ft (KB) To 4765.00 ft (KB) (TVD)

Reference Elevations: 1289.00 ft (KB)

Total Depth: 4765.00 ft (KB) (TVD)

1278.00 ft (CF)

Hole Diameter: 7.88 inches Hole Condition: Fair

KB to GR/CF: 11.00 ft

Serial #: 6798

Inside

Press @RunDepth: 70.31 psig @ 4688.00 ft (KB)

Capacity: 8000.00 psig

Start Date: 2010.11.05

End Date:

2010.11.06

Last Calib.:

2010.11.06

Start Time:

23:48:35

End Time:

06:45:04

Time On Btm:

2010.11.06 @ 01:47:04

Time Off Btm:

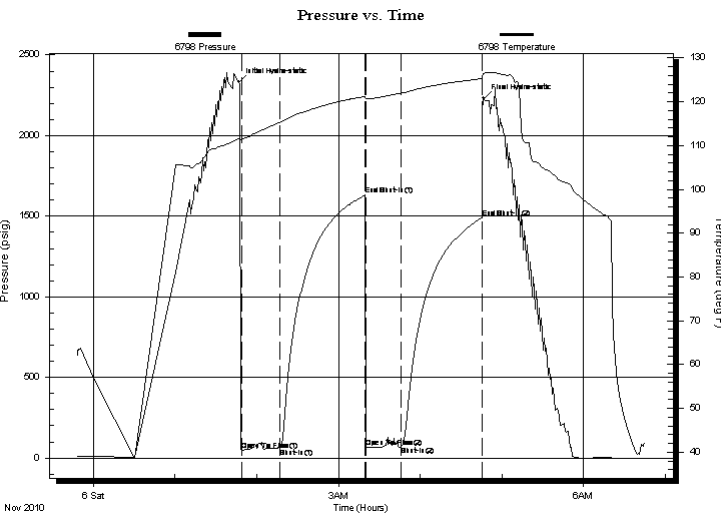
2010.11.06 @ 04:46:49

TEST COMMENT: IF:Weak blow . 1/2 - 1".

IS:No blow .

FF:Weak blow . (surface) Dead in 1 min.

FS:No blow .



PRESSURE SUMMARY

Time (Min.)	Pressure (psig)	Temp (deg F)	Annotation
0	2330.90	111.59	Initial Hydro-static
2	49.04	111.42	Open To Flow (1)
31	61.07	115.33	Shut-In(1)
93	1631.04	121.21	End Shut-In(1)
94	68.00	120.69	Open To Flow (2)
119	70.31	121.91	Shut-In(2)
179	1489.76	125.28	End Shut-In(2)
180	2230.09	126.48	Final Hydro-static

Recovery

Length (ft)	Description	Volume (bbl)
35.00	Heavy mud	0.22

Gas Rates

Choke (inches)	Pressure (psig)	Gas Rate (Mcf/d)



**TRILOBITE
TESTING, INC**

DRILL STEM TEST REPORT

FLUID SUMMARY

Woolseey Operating Co.LLC

Lewis#1

125 N.Market, Ste.1000
Wichita ks.67202

23-34s-9w Harper Ks.

Job Ticket: 039221

DST#: 3

ATTN: Bill Klaver

Test Start: 2010.11.05 @ 23:48:34

Mud and Cushion Information

Mud Type: Gel Chem

Cushion Type:

Oil API:

deg API

Mud Weight: 9.00 lb/gal

Cushion Length:

ft

Water Salinity:

5500 ppm

Viscosity: 51.00 sec/qt

Cushion Volume:

bbf

Water Loss: 8.99 in³

Gas Cushion Type:

Resistivity: 0.00 ohm.m

Gas Cushion Pressure:

psig

Salinity: 5500.00 ppm

Filter Cake: 0.20 inches

Recovery Information

Recovery Table

Length ft	Description	Volume bbf
35.00	Heavy mud	0.218

Total Length: 35.00 ft Total Volume: 0.218 bbf

Num Fluid Samples: 0

Num Gas Bombs: 0

Serial #: none

Laboratory Name:

Laboratory Location:

Recovery Comments:

