



## DRILL STEM TEST REPORT

Prepared For: **F.G.Holl Company L.L.C.**

9431 East Central Suite 100  
Wichita, Kansas 67206-2563

ATTN: Ryan Greenbaum

**21-21s-14w Stafford**

**Bayer East #3**

Start Date: 2011.03.15 @ 01:30:00

End Date: 2011.03.15 @ 07:50:30

Job Ticket #: 15778                      DST #: 2

Superior Testers Enterprises LLC  
PO Box 138 Great Bend KS 67530  
1-800-792-6902

Printed: 2011.03.15 @ 20:39:09



# DRILL STEM TEST REPORT

F.G.Holl Company L.L.C.

**Bayer East #3**

9431 East Central Suite 100  
Wichita, Kansas 67206-2563

**21-21s-14w Stafford**

Job Ticket: 15778

**DST#: 2**

ATTN: Ryan Greenbaum

Test Start: 2011.03.15 @ 01:30:00

## GENERAL INFORMATION:

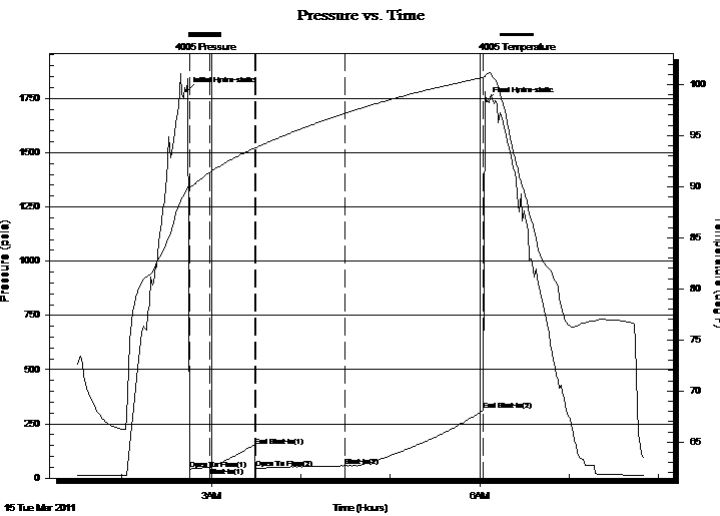
Formation: **Kansas City "J"**  
 Deviated: No Whipstock: ft (KB)  
 Time Tool Opened: 02:45:30  
 Time Test Ended: 07:50:30  
 Interval: **3570.00 ft (KB) To 3590.00 ft (KB) (TVD)**  
 Total Depth: 3590.00 ft (KB) (TVD)  
 Hole Diameter: 7.88 inches Hole Condition: Fair  
 Test Type: Conventional Bottom Hole (Initial)  
 Tester: Gene Budig  
 Unit No: 3335-29  
 Reference Elevations: 1943.00 ft (KB)  
 1935.00 ft (CF)  
 KB to GR/CF: 8.00 ft

## Serial #: 4005

Inside

Press @ Run Depth: 56.55 psia @ 3586.00 ft (KB) Capacity: 5000.00 psia  
 Start Date: 2011.03.15 End Date: 2011.03.15 Last Calib.: 2011.03.15  
 Start Time: 01:30:00 End Time: 07:50:30 Time On Btm: 2011.03.15 @ 02:43:30  
 Time Off Btm: 2011.03.15 @ 06:04:30

**TEST COMMENT:** 1st Opening 15 Minutes-Weak blow for 12 minutes and died  
 1st Shut-In 30 Minutes-No blow back  
 2nd Opening 60 Minutes-Fair blow built to the bottom of a 5 gallon bucket in 40 minutes  
 2nd Shut-In-No blow back



## PRESSURE SUMMARY

Time (Min.)	Pressure (psia)	Temp (deg F)	Annotation
0	1782.22	89.66	Initial Hydro-static
2	39.68	89.97	Open To Flow (1)
16	48.12	91.38	Shut-In(1)
46	148.88	93.76	End Shut-In(1)
47	45.95	93.81	Open To Flow (2)
106	56.55	97.16	Shut-In(2)
199	312.63	100.71	End Shut-In(2)
201	1735.89	100.98	Final Hydro-static

## Recovery

Length (ft)	Description	Volume (bbl)
5.00	Clean gassy Oil 100% Oil	0.07
60.00	Oil cut Mud 50%/50%	0.84
0.00	120' Gas in the pipe	0.00

## Gas Rates

	Choke (inches)	Pressure (psia)	Gas Rate (Mcf/d)



# DRILL STEM TEST REPORT

F.G.Holl Company L.L.C.

**Bayer East #3**

9431 East Central Suite 100  
Wichita, Kansas 67206-2563

**21-21s-14w Stafford**

Job Ticket: 15778

**DST#: 2**

ATTN: Ryan Greenbaum

Test Start: 2011.03.15 @ 01:30:00

## GENERAL INFORMATION:

Formation: **Kansas City "J"**

Deviated: No Whipstock: ft (KB)

Time Tool Opened: 02:45:30

Time Test Ended: 07:50:30

Test Type: Conventional Bottom Hole (Initial)

Tester: Gene Budig

Unit No: 3335-29

**Interval: 3570.00 ft (KB) To 3590.00 ft (KB) (TVD)**

Reference Elevations: 1943.00 ft (KB)

Total Depth: 3590.00 ft (KB) (TVD)

1935.00 ft (CF)

Hole Diameter: 7.88 inches Hole Condition: Fair

KB to GR/CF: 8.00 ft

**Serial #: 30176 Outside**

Press @ Run Depth: 308.33 psia @ 3587.00 ft (KB)

Capacity: 5000.00 psia

Start Date: 2011.03.15 End Date: 2011.03.15

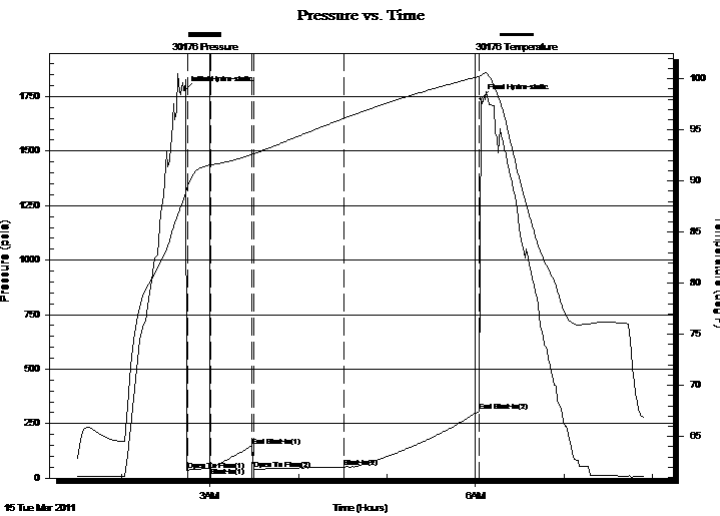
Last Calib.: 2011.03.15

Start Time: 01:30:00 End Time: 07:54:29

Time On Btm: 2011.03.15 @ 02:43:00

Time Off Btm: 2011.03.15 @ 06:03:30

**TEST COMMENT:** 1st Opening 15 Minutes-Weak blow for 12 minutes and died  
1st Shut-In 30 Minutes-No blow back  
2nd Opening 60 Minutes-Fair blow built to the bottom of a 5 gallon bucket in 40 minutes  
2nd Shut-In-No blow back



## PRESSURE SUMMARY

Time (Min.)	Pressure (psia)	Temp (deg F)	Annotation
0	1778.57	88.57	Initial Hydro-static
2	34.93	89.49	Open To Flow (1)
18	47.92	91.57	Shut-In(1)
46	147.71	92.61	End Shut-In(1)
47	39.31	92.66	Open To Flow (2)
108	50.93	96.10	Shut-In(2)
200	308.33	100.24	End Shut-In(2)
201	1739.68	100.28	Final Hydro-static

## Recovery

Length (ft)	Description	Volume (bbl)
5.00	Clean gassy Oil 100% Oil	0.07
60.00	Oil cut Mud 50%/50%	0.84
0.00	120' Gas in the pipe	0.00

## Gas Rates

	Choke (inches)	Pressure (psia)	Gas Rate (Mcf/d)



# DRILL STEM TEST REPORT

**TOOL DIAGRAM**

F.G.Holl Company L.L.C.

**Bayer East #3**

9431 East Central Suite 100  
Wichita, Kansas 67206-2563

**21-21s-14w Stafford**

Job Ticket: 15778

**DST#: 2**

ATTN: Ryan Greenbaum

Test Start: 2011.03.15 @ 01:30:00

## Tool Information

Drill Pipe:	Length: 3544.00 ft	Diameter: 3.80 inches	Volume: 49.71 bbl	Tool Weight: 2000.00 lb
Heavy Wt. Pipe:	Length: 0.00 ft	Diameter: 2.86 inches	Volume: 0.00 bbl	Weight set on Packer: 20000.00 lb
Drill Collar:	Length: 0.00 ft	Diameter: 2.25 inches	Volume: 0.00 bbl	Weight to Pull Loose: 55000.00 lb
			<u>Total Volume: 49.71 bbl</u>	Tool Chased 0.00 ft
Drill Pipe Above KB:	3.00 ft			String Weight: Initial 40000.00 lb
Depth to Top Packer:	3570.00 ft			Final 41000.00 lb
Depth to Bottom Packer:	ft			
Interval between Packers:	20.00 ft			
Tool Length:	49.00 ft			
Number of Packers:	2	Diameter: 6.75 inches		

Tool Comments:

Tool Description	Length (ft)	Serial No.	Position	Depth (ft)	Accum. Lengths
Change Over Sub	1.00			3542.00	
Shut-In Tool	5.00			3547.00	
Hydroic Tool	5.00			3552.00	
Jars	6.00			3558.00	
Safety Joint	2.00			3560.00	
Packer	5.00			3565.00	29.00 Bottom Of Top Packer
Packer	5.00			3570.00	
Perforations	15.00			3585.00	
Recorder	1.00	4005	Inside	3586.00	
Recorder	1.00	95712	Outside	3587.00	
Bullnose	3.00			3590.00	20.00 Bottom Packers & Anchor

**Total Tool Length: 49.00**



# DRILL STEM TEST REPORT

**FLUID SUMMARY**

F.G.Holl Company L.L.C.

**Bayer East #3**

9431 East Central Suite 100  
Wichita, Kansas 67206-2563

**21-21s-14w Stafford**

Job Ticket: 15778

**DST#: 2**

ATTN: Ryan Greenbaum

Test Start: 2011.03.15 @ 01:30:00

## Mud and Cushion Information

Mud Type: Gel Chem  
Mud Weight: 9.00 lb/gal  
Viscosity: 64.00 sec/qt  
Water Loss: 8.40 in<sup>3</sup>  
Resistivity: ohm.m  
Salinity: 7900.00 ppm  
Filter Cake: 1.00 inches

Cushion Type:  
Cushion Length: ft  
Cushion Volume: bbl  
Gas Cushion Type:  
Gas Cushion Pressure: psia

Oil API: deg API  
Water Salinity: ppm

## Recovery Information

Recovery Table

Length ft	Description	Volume bbl
5.00	Clean gassy Oil 100% Oil	0.070
60.00	Oil cut Mud 50%/50%	0.842
0.00	120' Gas in the pipe	0.000

Total Length: 65.00 ft      Total Volume: 0.912 bbl

Num Fluid Samples: 0

Num Gas Bombs: 0

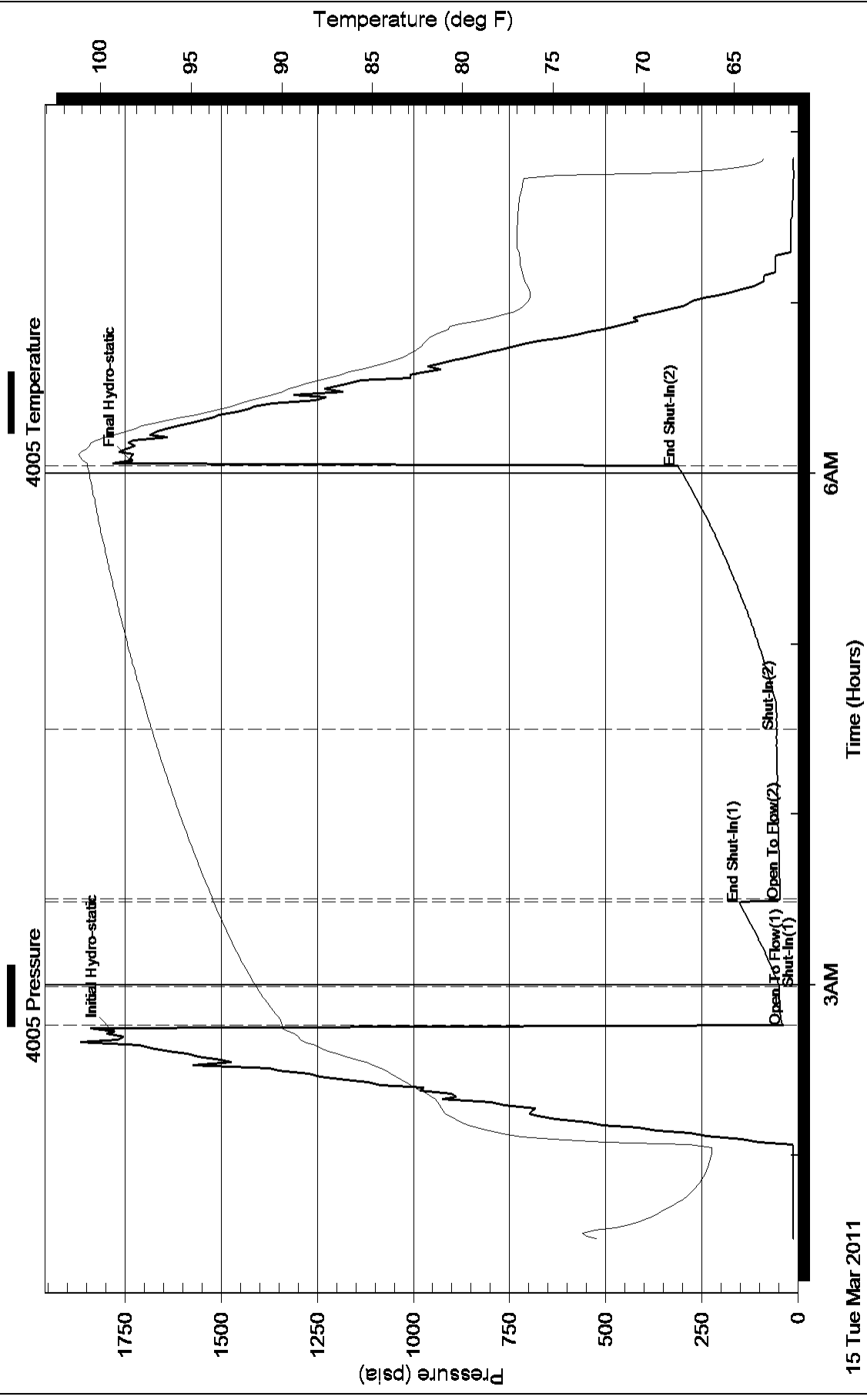
Serial #:

Laboratory Name:

Laboratory Location:

Recovery Comments:

# Pressure vs. Time



### Pressure vs. Time

