



DRILL STEM TEST REPORT

Prepared For: **F.G.Holl Company L.L.C.**

9431 East Central Suite 100
Wichita, Kansas 67206-2563

ATTN: Ryan Greenbaum

21-21s-14w Stafford

Bayer East #3

Start Date: 2011.03.16 @ 05:05:00

End Date: 2011.03.16 @ 00:00:00

Job Ticket #: 15780 DST #: 4

Superior Testers Enterprises LLC
PO Box 138 Great Bend KS 67530
1-800-792-6902

Printed: 2011.03.16 @ 23:08:38



DRILL STEM TEST REPORT

F.G.Holl Company L.L.C.

Bayer East #3

9431 East Central Suite 100
Wichita, Kansas 67206-2563

21-21s-14w Stafford

Job Ticket: 15780

DST#: 4

ATTN: Ryan Greenbaum

Test Start: 2011.03.16 @ 05:05:00

GENERAL INFORMATION:

Formation: **Kansas City "L"**

Deviated: No Whipstock: ft (KB)

Time Tool Opened: 00:00:00

Time Test Ended: 00:00:00

Test Type: Conventional Bottom Hole (Initial)

Tester: Gene Budig

Unit No: 3335-29

Interval: 3621.00 ft (KB) To 3640.00 ft (KB) (TVD)

Reference Elevations: 1943.00 ft (KB)

Total Depth: 3640.00 ft (KB) (TVD)

1935.00 ft (CF)

Hole Diameter: 7.88 inches Hole Condition: Fair

KB to GR/CF: 8.00 ft

Serial #: 4005

Inside

Press @ Run Depth: 405.64 psia @ 3636.00 ft (KB)

Capacity: 5000.00 psia

Start Date: 2011.03.16

End Date: 2011.03.16

Last Calib.: 2011.03.16

Start Time: 05:05:00

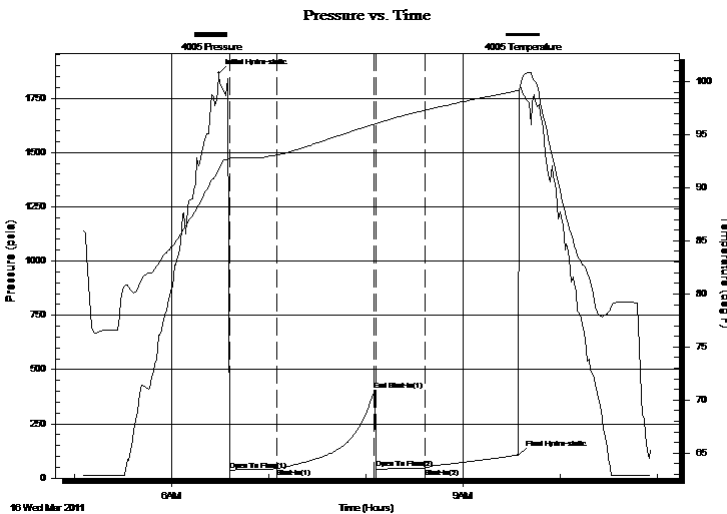
End Time: 10:55:30

Time On Btm: 2011.03.16 @ 06:29:00

Time Off Btm: 2011.03.16 @ 09:34:00

TEST COMMENT: 1st Opening 30 Minutes-Weak blow for 15 minutes and died
1st Shut-In 60 Minutes-No blow back
2nd Opening 30 Minutes-w eak intermittant surface blow for 20 minutes and died
2nd Shut-In 60 Minutes-No blow back

PRESSURE SUMMARY



Time (Min.)	Pressure (psia)	Temp (deg F)	Annotation
0	1865.13	91.72	Initial Hydro-static
7	36.56	92.86	Open To Flow (1)
36	44.12	93.09	Shut-In(1)
96	405.64	95.98	End Shut-In(1)
97	44.31	96.03	Open To Flow (2)
128	45.26	97.31	Shut-In(2)
185	107.32	99.15	Final Hydro-static

Recovery

Length (ft)	Description	Volume (bbl)
2.00	Clean oil	0.03
40.00	Oil Cut Mud 7% Oil 93% Mud	0.56

Gas Rates

Choke (inches)	Pressure (psia)	Gas Rate (Mcf/d)



DRILL STEM TEST REPORT

F.G.Holl Company L.L.C.

Bayer East #3

9431 East Central Suite 100
Wichita, Kansas 67206-2563

21-21s-14w Stafford

ATTN: Ryan Greenbaum

Job Ticket: 15780

DST#: 4

Test Start: 2011.03.16 @ 05:05:00

GENERAL INFORMATION:

Formation: **Kansas City "L"**

Deviated: No Whipstock: ft (KB)

Time Tool Opened: 00:00:00

Time Test Ended: 00:00:00

Test Type: Conventional Bottom Hole (Initial)

Tester: Gene Budig

Unit No: 3335-29

Interval: 3621.00 ft (KB) To 3640.00 ft (KB) (TVD)

Reference Elevations: 1943.00 ft (KB)

Total Depth: 3640.00 ft (KB) (TVD)

1935.00 ft (CF)

Hole Diameter: 7.88 inches Hole Condition: Fair

KB to GR/CF: 8.00 ft

Serial #: 30176 Outside

Press @ RunDepth: 101.67 psia @ 3637.00 ft (KB)

Capacity: 5000.00 psia

Start Date: 2011.03.16

End Date: 2011.03.16

Last Calib.: 2011.03.16

Start Time: 05:05:00

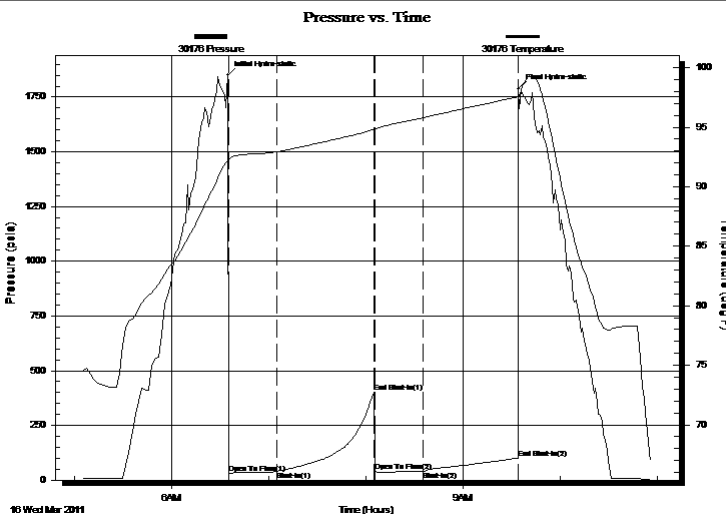
End Time: 10:55:30

Time On Btm: 2011.03.16 @ 06:34:30

Time Off Btm: 2011.03.16 @ 09:34:00

TEST COMMENT: 1st Opening 30 Minutes-Weak blow for 15 minutes and died
1st Shut-In 60 Minutes-No blow back
2nd Opening 30 Minutes-w eak intermittent surface blow for 20 minutes and died
2nd Shut-In 60 Minutes-No blow back

PRESSURE SUMMARY



Time (Min.)	Pressure (psia)	Temp (deg F)	Annotation
0	1849.37	92.19	Initial Hydro-static
1	31.08	92.29	Open To Flow (1)
31	39.28	92.93	Shut-In(1)
90	402.33	94.79	End Shut-In(1)
91	38.75	94.83	Open To Flow (2)
121	39.37	95.80	Shut-In(2)
179	101.67	97.54	End Shut-In(2)
180	1787.19	97.56	Final Hydro-static

Recovery

Length (ft)	Description	Volume (bbl)
2.00	Clean oil	0.03
40.00	Oil Cut Mud 7% Oil 93% Mud	0.56

Gas Rates

Choke (inches)	Pressure (psia)	Gas Rate (Mcf/d)



DRILL STEM TEST REPORT

TOOL DIAGRAM

F.G.Holl Company L.L.C.

Bayer East #3

9431 East Central Suite 100
Wichita, Kansas 67206-2563

21-21s-14w Stafford

Job Ticket: 15780

DST#: 4

ATTN: Ryan Greenbaum

Test Start: 2011.03.16 @ 05:05:00

Tool Information

Drill Pipe:	Length: 3605.00 ft	Diameter: 3.80 inches	Volume: 50.57 bbl	Tool Weight: 2000.00 lb
Heavy Wt. Pipe:	Length: 0.00 ft	Diameter: 2.86 inches	Volume: 0.00 bbl	Weight set on Packer: 20000.00 lb
Drill Collar:	Length: 0.00 ft	Diameter: 2.25 inches	Volume: 0.00 bbl	Weight to Pull Loose: 45000.00 lb
			<u>Total Volume: 50.57 bbl</u>	Tool Chased 0.00 ft
Drill Pipe Above KB:	13.00 ft			String Weight: Initial 40000.00 lb
Depth to Top Packer:	3621.00 ft			Final 40000.00 lb
Depth to Bottom Packer:	ft			
Interval between Packers:	19.00 ft			
Tool Length:	48.00 ft			
Number of Packers:	1	Diameter: 6.75 inches		

Tool Comments:

Tool Description	Length (ft)	Serial No.	Position	Depth (ft)	Accum. Lengths
------------------	-------------	------------	----------	------------	----------------

Change Over Sub	1.00			3593.00	
Shut-In Tool	5.00			3598.00	
Hydroic Tool	5.00			3603.00	
Jars	6.00			3609.00	
Safety Joint	2.00			3611.00	
Packer	5.00			3616.00	29.00 Bottom Of Top Packer
Packer	5.00			3621.00	
Perforations	14.00			3635.00	
Recorder	1.00	4005	Inside	3636.00	
Recorder	1.00	95712	Outside	3637.00	
Bullnose	3.00			3640.00	19.00 Bottom Packers & Anchor

Total Tool Length: 48.00



DRILL STEM TEST REPORT

FLUID SUMMARY

F.G.Holl Company L.L.C.

Bayer East #3

9431 East Central Suite 100
Wichita, Kansas 67206-2563

21-21s-14w Stafford

Job Ticket: 15780

DST#: 4

ATTN: Ryan Greenbaum

Test Start: 2011.03.16 @ 05:05:00

Mud and Cushion Information

Mud Type: Gel Chem

Mud Weight: 9.00 lb/gal

Viscosity: 57.00 sec/qt

Water Loss: 10.40 in³

Resistivity: ohm.m

Salinity: 8900.00 ppm

Filter Cake: inches

Cushion Type:

Cushion Length: ft

Cushion Volume: bbl

Gas Cushion Type:

Gas Cushion Pressure: psia

Oil API:

Water Salinity: deg API

ppm

Recovery Information

Recovery Table

Length ft	Description	Volume bbl
2.00	Clean oil	0.028
40.00	Oil Cut Mud 7% Oil 93% Mud	0.561

Total Length: 42.00 ft Total Volume: 0.589 bbl

Num Fluid Samples: 0

Num Gas Bombs: 0

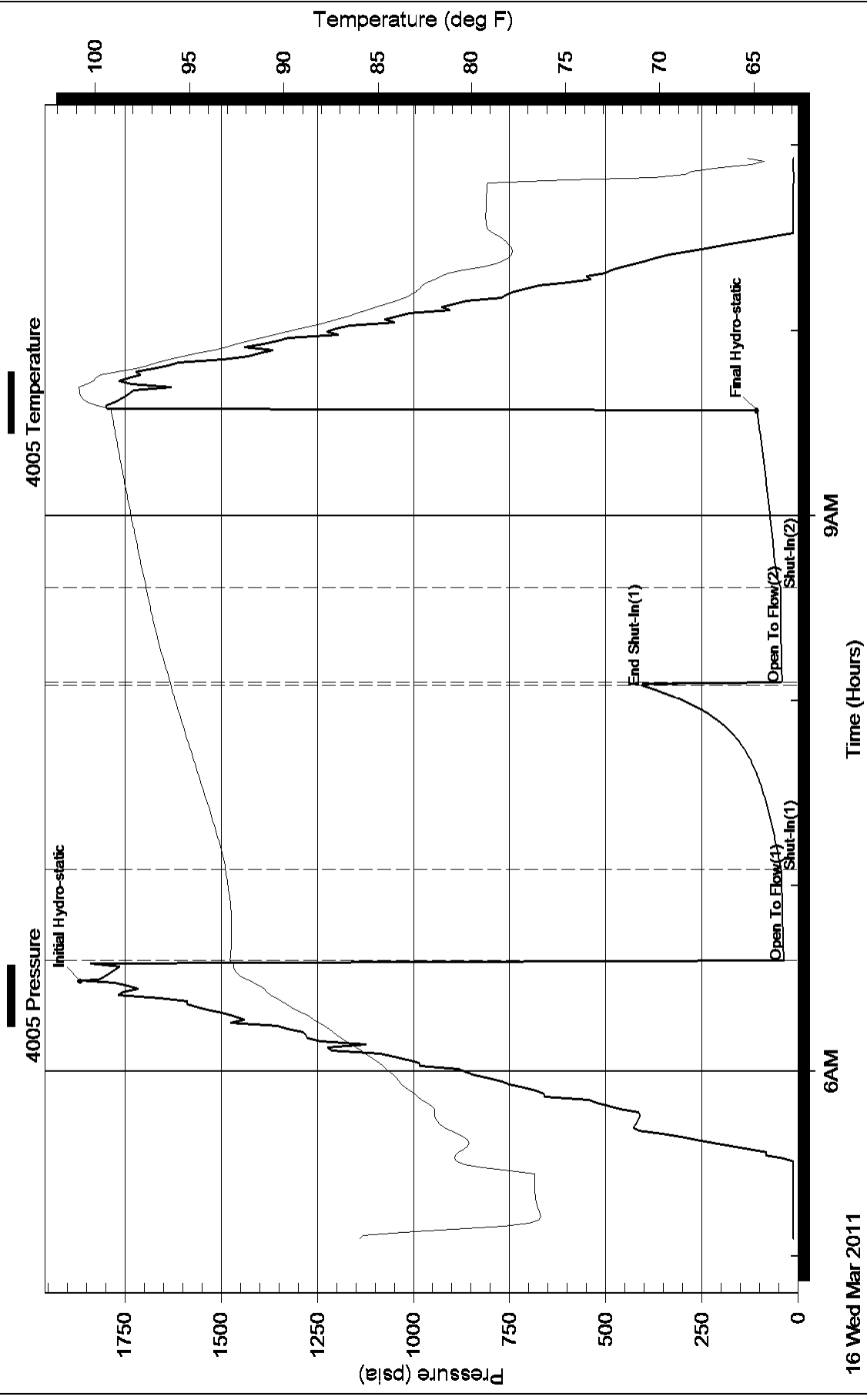
Serial #:

Laboratory Name:

Laboratory Location:

Recovery Comments:

Pressure vs. Time



Pressure vs. Time

