



DRILL STEM TEST REPORT

Prepared For: **FALCON EXPLORATION**

125 N MARKET STE 1252
WICHITA KS 67202

ATTN: KEITH REAVIS

34-27S-30W GRAY

M.D. ISAAC 1-34

Start Date: 2011.01.09 @ 20:00:00

End Date: 2011.01.09 @ 04:44:30

Job Ticket #: 1062 DST #: 1

Eagle Testers LLC.

P.O.Box 1011, Great Bend, KS 67530

620-617-7548

Printed: 2011.01.10 @ 14:35:14

FALCON EXPLORATION
M.D. ISAAC 1-34
34-27S-30W GRAY
DST # 1
STOTLER
2011.01.09



DRILL STEM TEST REPORT

FALCON EXPLORATION
 125 N MARKET STE 1252
 WICHITA KS 67202
 ATTN: KEITH REAVIS

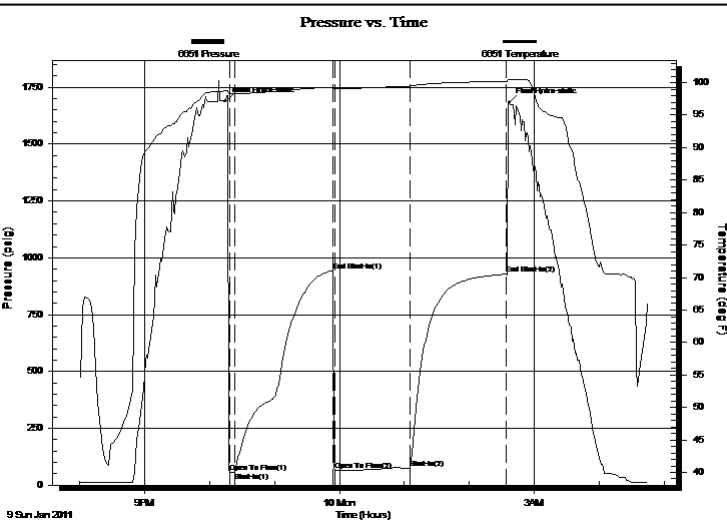
M.D. ISAAC 1-34
34-27S-30W GRAY
 Job Ticket: 1062 **DST#: 1**
 Test Start: 2011.01.09 @ 20:00:00

GENERAL INFORMATION:

Formation: **STOTLER**
 Deviated: No Whipstock: ft (KB)
 Time Tool Opened: 22:18:30
 Time Test Ended: 04:44:30
 Interval: **3494.00 ft (KB) To 3554.00 ft (KB) (TVD)**
 Total Depth: 3554.00 ft (KB) (TVD)
 Hole Diameter: 7.88 inches Hole Condition: Fair
 Test Type: Conventional Bottom Hole (Initial)
 Tester: DAVID NICHOLS
 Unit No: 15 270 MRT ELLINWOO
 Reference Elevations: 2809.00 ft (KB)
 2799.00 ft (CF)
 KB to GR/CF: 10.00 ft

Serial #: 6651 Inside
 Press @ Run Depth: 73.42 psig @ 3550.00 ft (KB) Capacity: 5000.00 psig
 Start Date: 2011.01.09 End Date: 2011.01.10 Last Calib.: 2010.12.25
 Start Time: 20:01:00 End Time: 04:44:30 Time On Btm: 2011.01.09 @ 22:14:30
 Time Off Btm: 2011.01.10 @ 02:37:00

TEST COMMENT: 5-INITIAL OPENING GOOD BLOW BOTTOM BUCKET IN 2 MINS
 90-INITIAL SHUT IN GOOD BLOW BACK BOTTOM BUCKET IN 10 MINS
 70-FINAL OPENING GOOD BLOW BOTTOM BUCKET IN 30 SEC GAS TO SURFACE IN 60 MINS
 90-FINAL SHUT IN GOOD BLOW BACK BOTTOM BUCKET IN 10 MINS



PRESSURE SUMMARY			
Time (Min.)	Pressure (psig)	Temp (deg F)	Annotation
0	1688.52	98.72	Initial Hydro-static
4	55.19	98.30	Open To Flow (1)
9	55.46	98.24	Shut-In(1)
99	942.76	99.31	End Shut-In(1)
101	64.76	99.05	Open To Flow (2)
171	73.42	99.48	Shut-In(2)
260	927.79	100.24	End Shut-In(2)
263	1681.50	100.46	Final Hydro-static

Recovery		
Length (ft)	Description	Volume (bbl)
3400.00	GAS IN PIPE 100%GAS	49.72
50.00	MUD 100%MUD	0.73

Gas Rates			
	Choke (inches)	Pressure (psig)	Gas Rate (Mcf/d)
First Gas Rate	0.25	3.00	5.28



DRILL STEM TEST REPORT

FALCON EXPLORATION
 125 N MARKET STE 1252
 WICHITA KS 67202
 ATTN: KEITH REAVIS

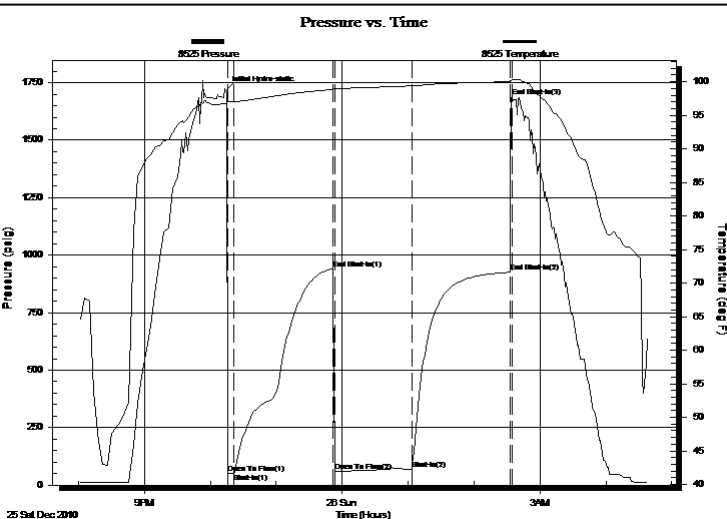
M.D. ISAAC 1-34
34-27S-30W GRAY
 Job Ticket: 1062 **DST#: 1**
 Test Start: 2011.01.09 @ 20:00:00

GENERAL INFORMATION:

Formation: **STOTLER**
 Deviated: No Whipstock: ft (KB)
 Time Tool Opened: 22:18:30
 Time Test Ended: 04:44:30
 Interval: **3494.00 ft (KB) To 3554.00 ft (KB) (TVD)**
 Total Depth: 3554.00 ft (KB) (TVD)
 Hole Diameter: 7.88 inches Hole Condition: Fair
 Test Type: Conventional Bottom Hole (Initial)
 Tester: DAVID NICHOLS
 Unit No: 15 270 MRT ELLINWOO
 Reference Elevations: 2809.00 ft (KB)
 2799.00 ft (CF)
 KB to GR/CF: 10.00 ft

Serial #: 8525 Outside
 Press @ Run Depth: 1688.51 psig @ 3551.00 ft (KB) Capacity: 5000.00 psig
 Start Date: 2010.12.25 End Date: 2010.12.26 Last Calib.: 2010.12.25
 Start Time: 20:02:00 End Time: 04:38:30 Time On Btm: 2010.12.25 @ 22:14:00
 Time Off Btm:

TEST COMMENT: 5-INITIAL OPENING GOOD BLOW BOTTOM BUCKET IN 2 MINS
 90-INITIAL SHUT IN GOOD BLOW BACK BOTTOM BUCKET IN 10 MINS
 70-FINAL OPENING GOOD BLOW BOTTOM BUCKET IN 30 SEC GAS TO SURFACE IN 60 MINS
 90-FINAL SHUT IN GOOD BLOW BACK BOTTOM BUCKET IN 10 MINS



PRESSURE SUMMARY			
Time (Min.)	Pressure (psig)	Temp (deg F)	Annotation
0	1714.89	96.78	Initial Hydro-static
2	50.47	96.97	Open To Flow (1)
8	51.71	97.04	Shut-In(1)
98	940.88	98.84	End Shut-In(1)
100	60.42	99.04	Open To Flow (2)
170	70.05	99.39	Shut-In(2)
259	925.71	100.01	End Shut-In(2)
261	1688.51	100.27	End Shut-In(3)

Recovery		
Length (ft)	Description	Volume (bbl)
3400.00	GAS IN PIPE 100%GAS	49.72
50.00	MUD 100%MUD	0.73

Gas Rates			
	Choke (inches)	Pressure (psig)	Gas Rate (Mcf/d)
First Gas Rate	0.25	3.00	5.28



DRILL STEM TEST REPORT

TOOL DIAGRAM

FALCON EXPLORATION
 125 N MARKET STE 1252
 WICHITA KS 67202
 ATTN: KEITH REAVIS

M.D. ISAAC 1-34
34-27S-30W GRAY
 Job Ticket: 1062 **DST#: 1**
 Test Start: 2011.01.09 @ 20:00:00

Tool Information

Drill Pipe:	Length: 3468.00 ft	Diameter: 3.88 inches	Volume: 50.72 bbl	Tool Weight: 2000.00 lb
Heavy Wt. Pipe:	Length: 0.00 ft	Diameter: 0.00 inches	Volume: 0.00 bbl	Weight set on Packer: 20000.00 lb
Drill Collar:	Length: 0.00 ft	Diameter: 2.25 inches	Volume: 0.00 bbl	Weight to Pull Loose: lb
			<u>Total Volume: 50.72 bbl</u>	Tool Chased 0.00 ft
Drill Pipe Above KB:	2.75 ft			String Weight: Initial 61000.00 lb
Depth to Top Packer:	3494.00 ft			Final 61000.00 lb
Depth to Bottom Packer:	ft			
Interval between Packers:	60.00 ft			
Tool Length:	88.75 ft			
Number of Packers:	2	Diameter: 6.75 inches		

Tool Comments:

Tool Description	Length (ft)	Serial No.	Position	Depth (ft)	Accum. Lengths
Shut-in tool	5.00			3470.25	
Hydraulic tool	5.00			3475.25	
Change over sub	0.75			3476.00	
Jars	6.00			3482.00	
Safety Joint	2.00			3484.00	
Packer	5.00			3489.00	28.75 Bottom Of Top Packer
Packer	5.00			3494.00	
Anchor	2.00			3496.00	
change over sub	0.75			3496.75	
drill pipe	31.50			3528.25	
change over sub	0.75			3529.00	
anchor	20.00			3549.00	
Recorder	1.00	6651	Inside	3550.00	
Recorder	1.00	8525	Outside	3551.00	
bull plug	3.00			3554.00	60.00 Bottom Packers & Anchor

Total Tool Length: 88.75



DRILL STEM TEST REPORT

FLUID SUMMARY

FALCON EXPLORATION
125 N MARKET STE 1252
WICHITA KS 67202
ATTN: KEITH REAVIS

M.D. ISAAC 1-34
34-27S-30W GRAY
Job Ticket: 1062 **DST#: 1**
Test Start: 2011.01.09 @ 20:00:00

Mud and Cushion Information

Mud Type:	Gel Chem	Cushion Type:		Oil API:	deg API
Mud Weight:	9.00 lb/gal	Cushion Length:	ft	Water Salinity:	ppm
Viscosity:	57.00 sec/qt	Cushion Volume:	bbbl		
Water Loss:	9.19 in ³	Gas Cushion Type:			
Resistivity:	ohm.m	Gas Cushion Pressure:	psig		
Salinity:	3500.00 ppm				
Filter Cake:	inches				

Recovery Information

Recovery Table

Length ft	Description	Volume bbl
3400.00	GAS IN PIPE 100%GAS	49.722
50.00	MUD 100%MUD	0.731

Total Length: 3450.00 ft Total Volume: 50.453 bbl

Num Fluid Samples: 0 Num Gas Bombs: 0 Serial #:

Laboratory Name: Laboratory Location:

Recovery Comments:



DRILL STEM TEST REPORT

GAS RATES

FALCON EXPLORATION
125 N MARKET STE 1252
WICHITA KS 67202
ATTN: KEITH REAVIS

M.D. ISAAC 1-34
34-27S-30W GRAY
Job Ticket: 1062 **DST#: 1**
Test Start: 2011.01.09 @ 20:00:00

Gas Rates Information

Temperature: 2 (deg F)
Relative Density: 0.65
Z Factor: 0.8

Gas Rates Table

Flow Period	Elapsed Time	Choke (inches)	Pressure (psig)	Gas Rate (Mcf/d)
2	70	0.25	3.00	5.28

Serial #: 6651

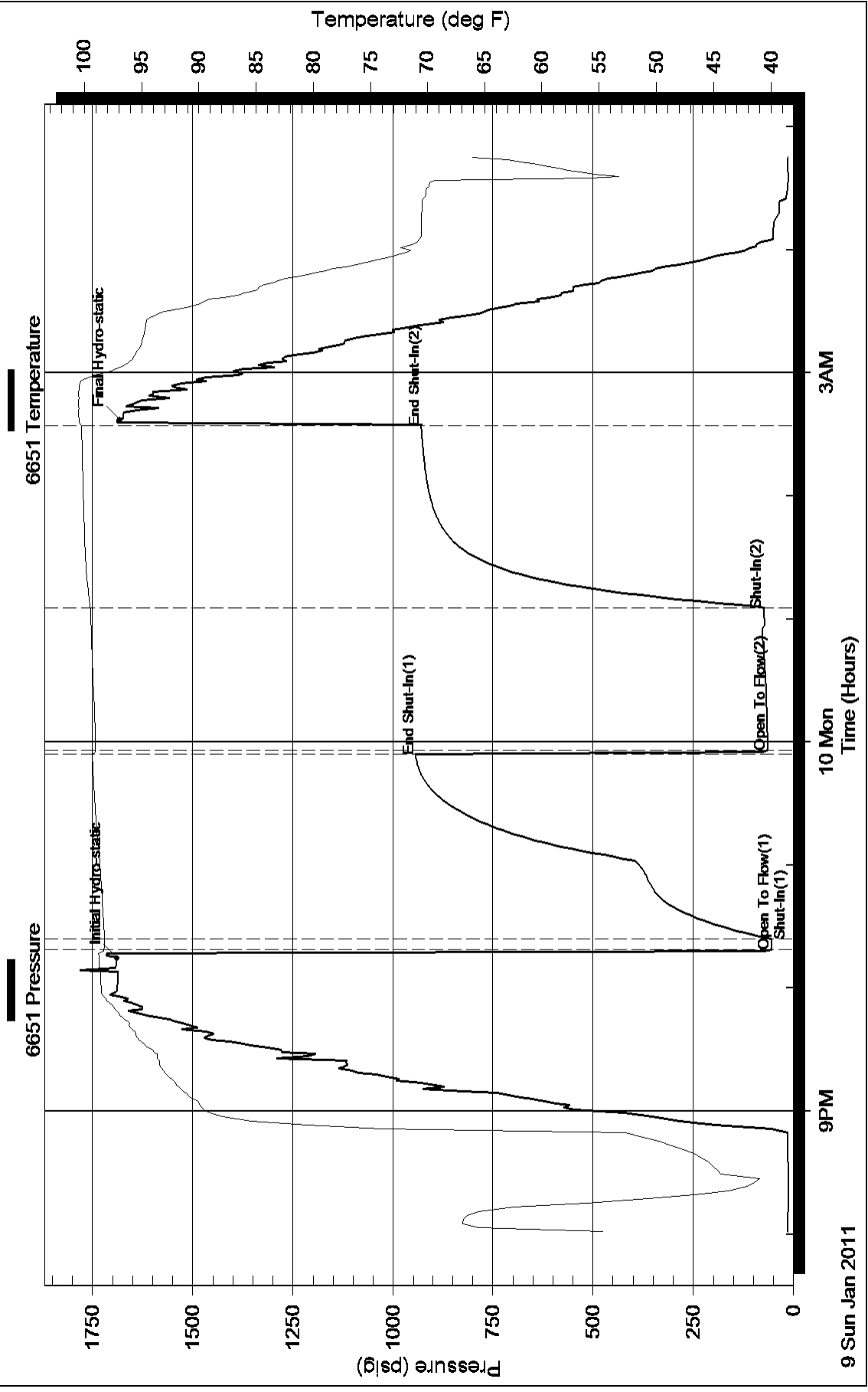
Inside

FALCON EXPLORATION

34-27S-30W GRAY

DST Test Number: 1

Pressure vs. Time



Pressure vs. Time

