



DRILL STEM TEST REPORT

Prepared For: **MULL DRILLING COMPANY INC**

1700 N WATERFRONT PKWY BLDG 1200
WICHITA KS 67206

ATTN: KEVIN KESSLER

10-15S-27W

JLT 1-10

Start Date: 2011.03.10 @ 06:00:00

End Date: 2011.03.10 @ 13:08:00

Job Ticket #: 1004 DST #: 7

Eagle Testers LLC.

P.O.Box 1011, Great Bend, KS 67530

620-617-7548

Printed: 2011.03.10 @ 06:56:35

MULL DRILLING COMPANY INC
JLT 1-10
10-15S-27W
DST # 7
MISS
2011.03.10



DRILL STEM TEST REPORT

MULL DRILLING COMPANY INC

JLT 1-10

1700 N WATERFRONT PKWY BLDG 1200
WICHITA KS 67206

10-15S-27W

Job Ticket: 1004

DST#: 7

ATTN: KEVIN KESSLER

Test Start: 2011.03.10 @ 06:00:00

GENERAL INFORMATION:

Formation: **MISS**

Deviated: No Whipstock: ft (KB)

Time Tool Opened: 08:04:00

Time Test Ended: 13:08:00

Test Type: Conventional Bottom Hole (Initial)

Tester: DAVID NICHOLS

Unit No: 15 53 MRT DIGTION

Interval: 4255.00 ft (KB) To 4270.00 ft (KB) (TVD)

Reference Elevations: 2440.00 ft (KB)

Total Depth: 4270.00 ft (KB) (TVD)

2434.00 ft (CF)

Hole Diameter: 7.88 inches Hole Condition: Fair

KB to GR/CF: 6.00 ft

Serial #: 6666 Outside

Press @ Run Depth: 42.72 psig @ 4267.00 ft (KB)

Capacity: 5000.00 psig

Start Date: 2011.03.10

End Date: 2011.03.10

Last Calib.: 2011.03.10

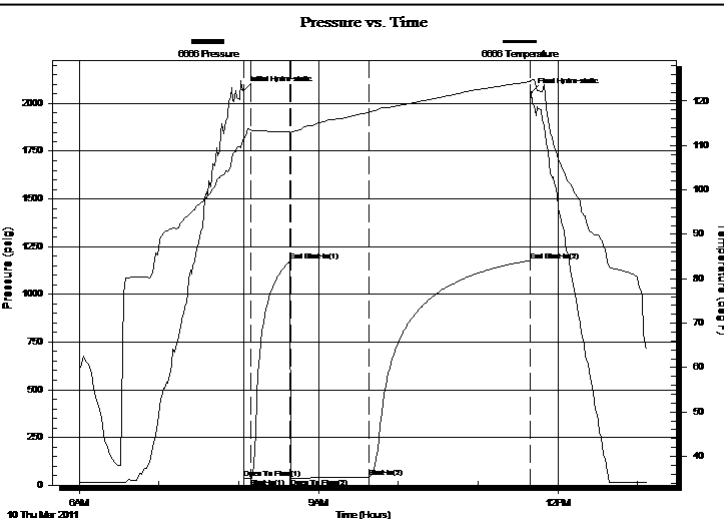
Start Time: 06:00:00

End Time: 13:08:00

Time On Btm: 2011.03.10 @ 08:03:30

Time Off Btm: 2011.03.10 @ 11:40:00

TEST COMMENT: 5-INITIAL OPENING WEAK SURFACE BLOW
30-INITIAL SHUT IN NO BLOW BACK
60-FINAL OPENING VERY WEAK SURFACE BLOW DIED AFTER 8 MINS
120-FINAL SHUT IN NO BLOW BACK



PRESSURE SUMMARY

Time (Min.)	Pressure (psig)	Temp (deg F)	Annotation
0	2070.05	111.71	Initial Hydro-static
1	34.29	111.22	Open To Flow (1)
6	35.05	113.48	Shut-In(1)
35	1172.78	113.15	End Shut-In(1)
36	36.13	112.76	Open To Flow (2)
95	42.72	117.52	Shut-In(2)
216	1177.81	124.41	End Shut-In(2)
217	2056.16	124.64	Final Hydro-static

Recovery

Length (ft)	Description	Volume (bbl)
10.00	MUD WITH A GOOD SHOW OF OIL 100%	0.05

Gas Rates

Choke (inches)	Pressure (psig)	Gas Rate (Mcf/d)



DRILL STEM TEST REPORT

MULL DRILLING COMPANY INC

JLT 1-10

1700 N WATERFRONT PKWY BLDG 1200
WICHITA KS 67206

10-15S-27W

ATTN: KEVIN KESSLER

Job Ticket: 1004

DST#: 7

Test Start: 2011.03.10 @ 06:00:00

GENERAL INFORMATION:

Formation: **MISS**

Deviated: No Whipstock: ft (KB)

Time Tool Opened: 08:04:00

Time Test Ended: 13:08:00

Test Type: Conventional Bottom Hole (Initial)

Tester: DAVID NICHOLS

Unit No: 15 53 MRT DIGTION

Interval: 4255.00 ft (KB) To 4270.00 ft (KB) (TVD)

Reference Elevations: 2440.00 ft (KB)

Total Depth: 4270.00 ft (KB) (TVD)

2434.00 ft (CF)

Hole Diameter: 7.88 inches Hole Condition: Fair

KB to GR/CF: 6.00 ft

Serial #: 6651

Inside

Press @ Run Depth: 1180.13 psig @ 4266.00 ft (KB)

Capacity: 5000.00 psig

Start Date: 2011.03.10

End Date: 2011.03.10

Last Calib.: 2011.03.10

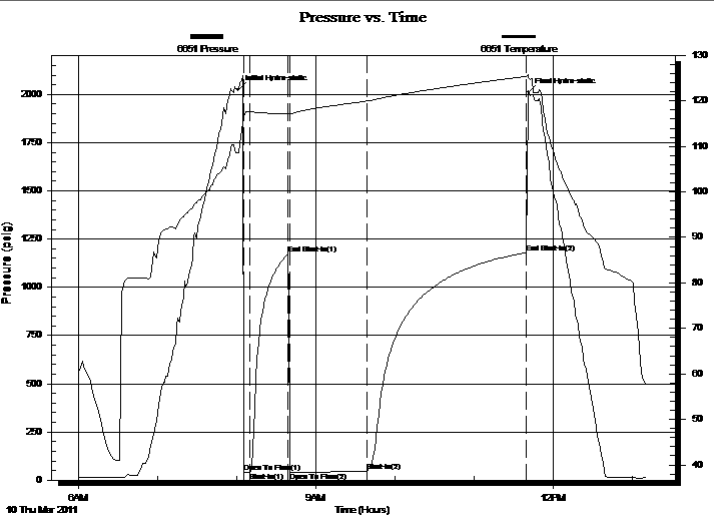
Start Time: 06:00:00

End Time: 13:11:00

Time On Btm: 2011.03.10 @ 08:01:30

Time Off Btm: 2011.03.10 @ 11:41:00

TEST COMMENT: 5-INITIAL OPENING WEAK SURFACE BLOW
30-INITIAL SHUT IN NO BLOW BACK
60-FINAL OPENING VERY WEAK SURFACE BLOW DIED AFTER 8 MINS
120-FINAL SHUT IN NO BLOW BACK



PRESSURE SUMMARY

Time (Min.)	Pressure (psig)	Temp (deg F)	Annotation
0	2023.71	108.69	Initial Hydro-static
4	38.62	115.74	Open To Flow (1)
8	38.35	117.69	Shut-In(1)
38	1172.25	117.22	End Shut-In(1)
39	39.84	116.94	Open To Flow (2)
97	45.06	119.97	Shut-In(2)
219	1180.13	125.42	End Shut-In(2)
220	2010.29	125.31	Final Hydro-static

Recovery

Length (ft)	Description	Volume (bbl)
10.00	MUD WITH A GOOD SHOW OF OIL 100%	0.05

Gas Rates

Choke (inches)	Pressure (psig)	Gas Rate (Mcf/d)



DRILL STEM TEST REPORT

TOOL DIAGRAM

MULL DRILLING COMPANY INC
 1700 N WATERFRONT PKWY BLDG 1200
 WICHITA KS 67206
 ATTN: KEVIN KESSLER

JLT 1-10
10-15S-27W
 Job Ticket: 1004 **DST#: 7**
 Test Start: 2011.03.10 @ 06:00:00

Tool Information

Drill Pipe:	Length: 4109.00 ft	Diameter: 3.88 inches	Volume: 60.09 bbl	Tool Weight:	2000.00 lb
Heavy Wt. Pipe:	Length: 0.00 ft	Diameter: 0.00 inches	Volume: 0.00 bbl	Weight set on Packer:	20000.00 lb
Drill Collar:	Length: 120.00 ft	Diameter: 2.25 inches	Volume: 0.59 bbl	Weight to Pull Loose:	70000.00 lb
			<u>Total Volume: 60.68 bbl</u>	Tool Chased	0.00 ft
Drill Pipe Above KB:	2.75 ft			String Weight: Initial	63000.00 lb
Depth to Top Packer:	4255.00 ft			Final	63000.00 lb
Depth to Bottom Packer:	ft				
Interval between Packers:	15.00 ft				
Tool Length:	43.75 ft				
Number of Packers:	2	Diameter: 6.75 inches			

Tool Comments:

Tool Description	Length (ft)	Serial No.	Position	Depth (ft)	Accum. Lengths
Shut-in tool	5.00			4231.25	
Hydraulic tool	5.00			4236.25	
Change over sub	0.75			4237.00	
Jars	6.00			4243.00	
Safety Joint	2.00			4245.00	
Packer	5.00			4250.00	28.75 Bottom Of Top Packer
Packer	5.00			4255.00	
Anchor	10.00			4265.00	
Recorder	1.00	6651	Inside	4266.00	
Recorder	1.00	6666	Outside	4267.00	
Bull plug	3.00			4270.00	15.00 Bottom Packers & Anchor

Total Tool Length: 43.75



DRILL STEM TEST REPORT

FLUID SUMMARY

MULL DRILLING COMPANY INC

JLT 1-10

1700 N WATERFRONT PKWY BLDG 1200
WICHITA KS 67206

10-15S-27W

Job Ticket: 1004

DST#: 7

ATTN: KEVIN KESSLER

Test Start: 2011.03.10 @ 06:00:00

Mud and Cushion Information

Mud Type: Gel Chem

Cushion Type:

Oil API:

deg API

Mud Weight: 9.00 lb/gal

Cushion Length:

ft

Water Salinity:

ppm

Viscosity: 56.00 sec/qt

Cushion Volume:

bbbl

Water Loss: 7.20 in³

Gas Cushion Type:

Resistivity: ohm.m

Gas Cushion Pressure:

psig

Salinity: 4600.00 ppm

Filter Cake: inches

Recovery Information

Recovery Table

Length ft	Description	Volume bbl
10.00	MUD WITH A GOOD SHOW OF OIL 100%M	0.049

Total Length: 10.00 ft Total Volume: 0.049 bbl

Num Fluid Samples: 0

Num Gas Bombs: 0

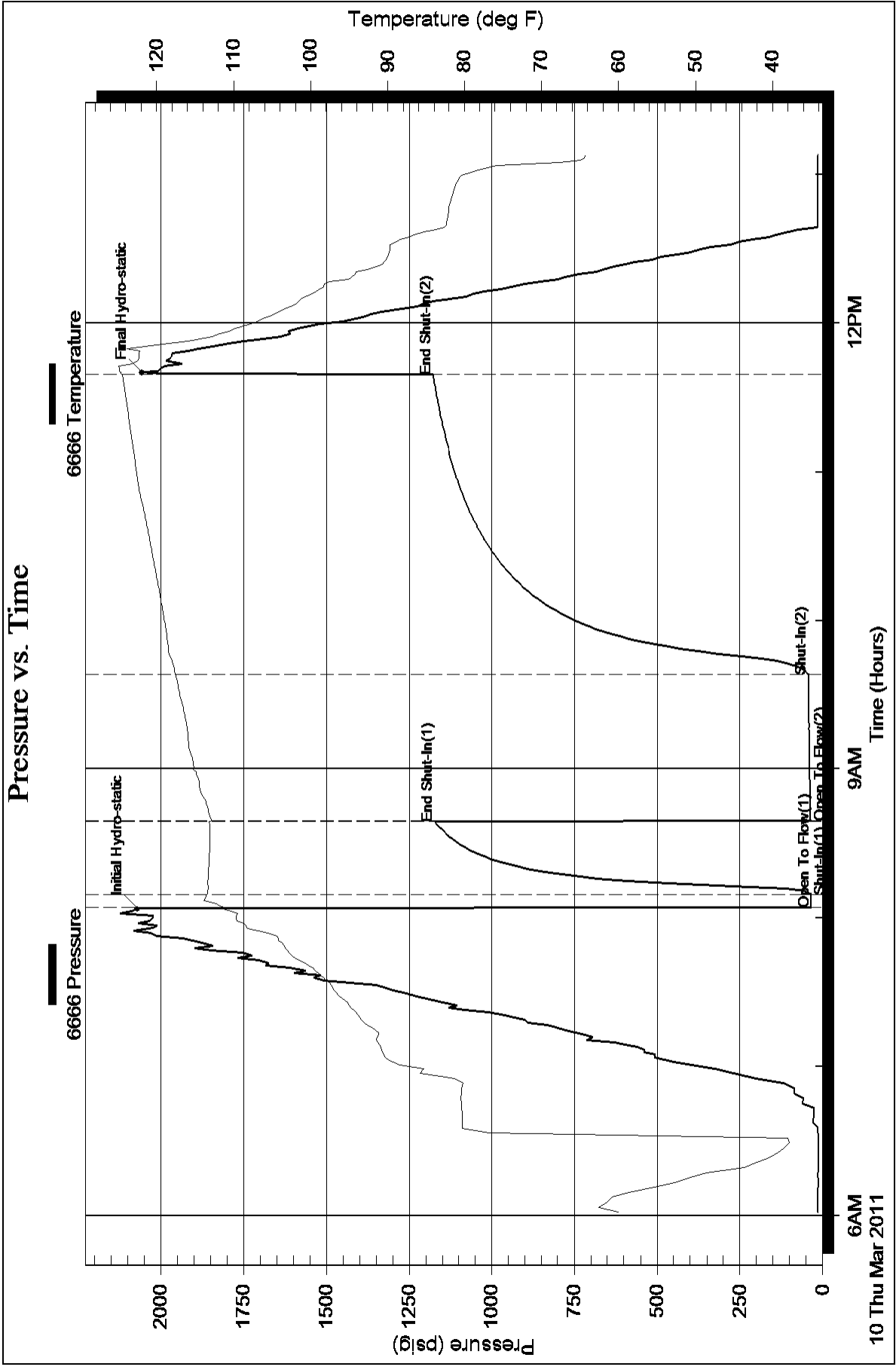
Serial #:

Laboratory Name:

Laboratory Location:

Recovery Comments:

Pressure vs. Time



Pressure vs. Time

