



## DRILL STEM TEST REPORT

Prepared For: **Woolsey Operating Company**

125 North Market Suite 1000  
Wichita Kansas 67202+1729

ATTN: Scott Alberg

**10/35S/12W Barber**

**Platt "GU" #2**

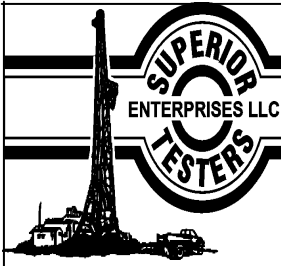
Start Date: 2011.01.28 @ 08:45:00

End Date: 2011.01.30 @ 00:18:33

Job Ticket #: 16024                      DST #: 1

Superior Testers Enterprises LLC  
PO Box 138 Great Bend KS 67530  
1-800-792-6902

Printed: 2011.01.30 @ 12:58:31



# DRILL STEM TEST REPORT

Woolsey Operating Company

Platt "GU" #2

125 North Market Suite 1000  
Wichita Kansas 67202+1729

10/35S/12W Barber

Job Ticket: 16024

DST#: 1

ATTN: Scott Alberg

Test Start: 2011.01.28 @ 08:45:00

## GENERAL INFORMATION:

Formation: **Mississippi**

Deviated: No Whipstock: ft (KB)

Time Tool Opened: 13:47:03

Time Test Ended: 00:18:33

Test Type: Conventional Bottom Hole (Initial)

Tester: Dylan E Ellis

Unit No: 3345/Pratt/66

Interval: **4742.00 ft (KB) To 4900.00 ft (KB) (TVD)**

Reference Elevations: 1393.00 ft (KB)

Total Depth: 4900.00 ft (KB) (TVD)

1382.00 ft (CF)

Hole Diameter: 7.88 inches Hole Condition: Fair

KB to GR/CF: 11.00 ft

**Serial #: 8405 Inside**

Press @ Run Depth: 554.43 psia @ 4895.26 ft (KB)

Capacity: 5000.00 psia

Start Date: 2011.01.28

End Date: 2011.01.30

Last Calib.: 2011.01.30

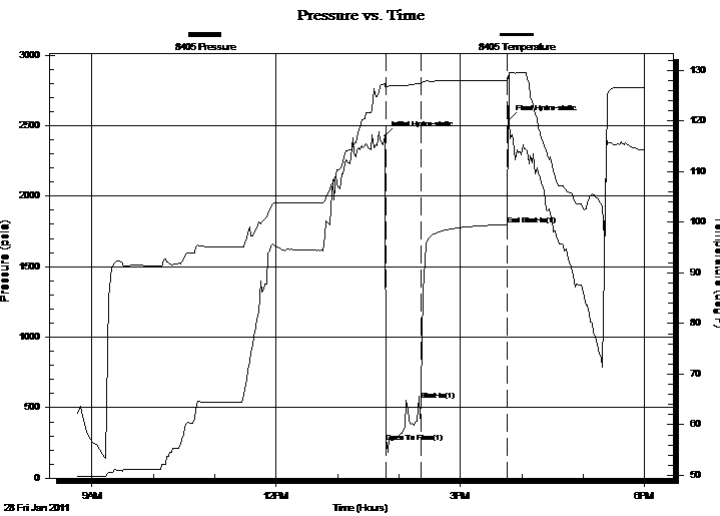
Start Time: 08:46:01

End Time: 00:18:33

Time On Btm: 2011.01.28 @ 13:46:33

Time Off Btm: 2011.01.28 @ 15:48:03

TEST COMMENT: 1ST Opening 30 Minutes strong blow/blow blew to bottom of bucket in 1 minute/gas to surface in 10 minutes  
 1ST Shut-In 60 Minutes yes blow back  
 2ND Opening N/A  
 2ND Shut-In N/A



## PRESSURE SUMMARY

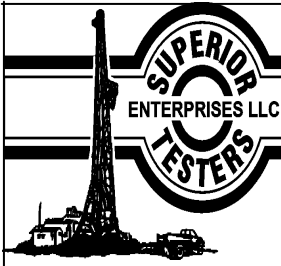
Time (Min.)	Pressure (psia)	Temp (deg F)	Annotation
0	2425.64	127.23	Initial Hydro-static
1	257.86	126.43	Open To Flow (1)
35	554.43	127.44	Shut-In(1)
119	1798.24	127.96	End Shut-In(1)
122	2543.53	129.48	Final Hydro-static

## Recovery

Length (ft)	Description	Volume (bbl)
180.00	Gassy Drilling Mud	0.89
180.00	Gassy Water cut mud 80%Mud 20% w at	1.30
180.00	Gassy Water cut mud 80%Mud 20%Wate	2.52
180.00	Gassy water cut muf 85%Mud 15% Wate	2.52
240.00	dry stands no fluid	3.37
240.00	gassy mud	3.37

## Gas Rates

Choke (inches)	Pressure (psia)	Gas Rate (Mcf/d)
----------------	-----------------	------------------



# DRILL STEM TEST REPORT

Woolsey Operating Company

Platt "GU" #2

125 North Market Suite 1000  
Wichita Kansas 67202+1729

10/35S/12W Barber

Job Ticket: 16024

DST#: 1

ATTN: Scott Alberg

Test Start: 2011.01.28 @ 08:45:00

## GENERAL INFORMATION:

Formation: **Mississippi**

Deviated: No Whipstock: ft (KB)

Time Tool Opened: 13:47:03

Time Test Ended: 00:18:33

Test Type: Conventional Bottom Hole (Initial)

Tester: Dylan E Ellis

Unit No: 3345/Pratt/66

Interval: **4742.00 ft (KB) To 4900.00 ft (KB) (TVD)**

Reference Elevations: 1393.00 ft (KB)

Total Depth: 4900.00 ft (KB) (TVD)

1382.00 ft (CF)

Hole Diameter: 7.88 inches Hole Condition: Fair

KB to GR/CF: 11.00 ft

Serial #: **8400** Outside

Press @ Run Depth: 1799.47 psia @ 4896.26 ft (KB)

Capacity: 5000.00 psia

Start Date: 2011.01.28

End Date: 2011.01.30

Last Calib.: 2011.01.30

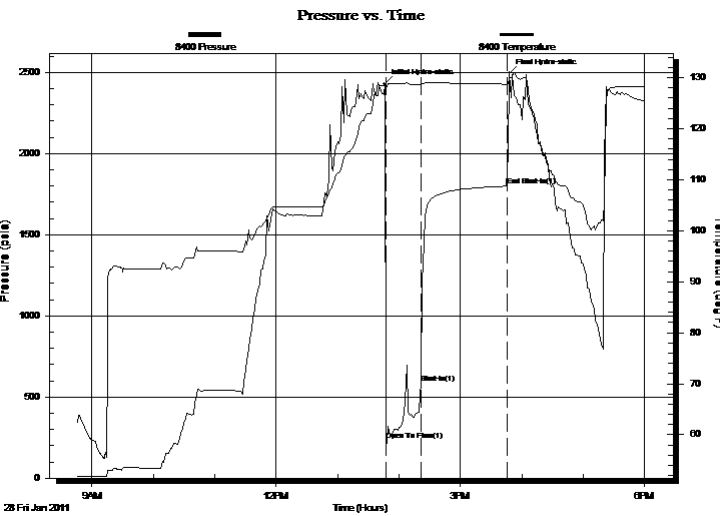
Start Time: 08:45:10

End Time: 00:27:10

Time On Btm: 2011.01.28 @ 13:46:00

Time Off Btm: 2011.01.28 @ 15:48:00

TEST COMMENT: 1ST Opening 30 Minutes strong blow/blow blew to bottom of bucket in 1 minute/gas to surface in 10 minutes  
 1ST Shut-In 60 Minutes yes blow back  
 2ND Opening N/A  
 2ND Shut-In N/A



## PRESSURE SUMMARY

Time (Min.)	Pressure (psia)	Temp (deg F)	Annotation
0	2429.78	128.46	Initial Hydro-static
1	231.69	127.97	Open To Flow (1)
36	587.70	128.65	Shut-In(1)
120	1799.47	128.74	End Shut-In(1)
122	2494.33	129.85	Final Hydro-static

## Recovery

Length (ft)	Description	Volume (bbl)
180.00	Gassy Drilling Mud	0.89
180.00	Gassy Water cut mud 80%Mud 20% water	1.30
180.00	Gassy Water cut mud 80%Mud 20% Water	2.52
180.00	Gassy water cut mud 85%Mud 15% Water	2.52
240.00	dry stands no fluid	3.37
240.00	gassy mud	3.37

## Gas Rates

Choke (inches)	Pressure (psia)	Gas Rate (Mcf/d)



# DRILL STEM TEST REPORT

**TOOL DIAGRAM**

Woolsey Operating Company

**Platt "GU" #2**

125 North Market Suite 1000  
Wichita Kansas 67202+1729

**10/35S/12W Barber**

Job Ticket: 16024

**DST#: 1**

ATTN: Scott Alberg

Test Start: 2011.01.28 @ 08:45:00

## Tool Information

Drill Pipe:	Length: 4430.00 ft	Diameter: 3.80 inches	Volume: 62.14 bbl	Tool Weight: 2000.00 lb
Heavy Wt. Pipe:	Length: 0.00 ft	Diameter: 0.00 inches	Volume: 0.00 bbl	Weight set on Packer: 20000.00 lb
Drill Collar:	Length: 314.61 ft	Diameter: 2.25 inches	Volume: 1.55 bbl	Weight to Pull Loose: 38000.00 lb
			<u>Total Volume: 63.69 bbl</u>	Tool Chased 4.00 ft
Drill Pipe Above KB:	30.61 ft			String Weight: Initial 68000.00 lb
Depth to Top Packer:	4742.00 ft			Final 70000.00 lb
Depth to Bottom Packer:	ft			
Interval between Packers:	157.26 ft			
Tool Length:	185.26 ft			
Number of Packers:	2	Diameter: 6.75 inches		

Tool Comments:

Tool Description	Length (ft)	Serial No.	Position	Depth (ft)	Accum. Lengths
------------------	-------------	------------	----------	------------	----------------

Shut-In Tool	5.00			4719.00	
Hydraulic Tool	5.00			4724.00	
Jars	6.00			4730.00	
Safety Joint	2.00			4732.00	
Packer	5.00			4737.00	28.00 Bottom Of Top Packer
Packer	5.00			4742.00	
Perforations	9.00			4751.00	
Change Over Sub	0.75			4751.75	
Drill Pipe	126.76			4878.51	
Change Over Sub	0.75			4879.26	
Perforations	15.00			4894.26	
Recorder	1.00	8405	Inside	4895.26	
Recorder	1.00	8400	Outside	4896.26	
Bull Plug	3.00			4899.26	157.26 Bottom Packers & Anchor

**Total Tool Length: 185.26**



# DRILL STEM TEST REPORT

## FLUID SUMMARY

Woolsey Operating Company

Platt "GU" #2

125 North Market Suite 1000  
Wichita Kansas 67202+1729

10/35S/12W Barber

Job Ticket: 16024

DST#: 1

ATTN: Scott Alberg

Test Start: 2011.01.28 @ 08:45:00

### Mud and Cushion Information

Mud Type: Gel Chem  
Mud Weight: 9.00 lb/gal  
Viscosity: 48.00 sec/qt  
Water Loss: 8.79 in<sup>3</sup>  
Resistivity: ohm.m  
Salinity: 3000.00 ppm  
Filter Cake: inches

Cushion Type:  
Cushion Length: ft  
Cushion Volume: bbl  
Gas Cushion Type:  
Gas Cushion Pressure: psia

Oil API: deg API  
Water Salinity: ppm

### Recovery Information

Recovery Table

Length ft	Description	Volume bbl
180.00	Gassy Drilling Mud	0.885
180.00	Gassy Water cut mud 80%Mud 20% w ater	1.299
180.00	Gassy Water cut mud 80%Mud 20%Water	2.525
180.00	Gassy w ater cut muf 85%Mud 15% Water	2.525
240.00	dry stands no fluid	3.367
240.00	gassy mud	3.367
0.00	chlorides 58000	0.000
0.00	Resisitivity .08 @70 Degrees	0.000

Total Length: 1200.00 ft      Total Volume: 13.968 bbl

Num Fluid Samples: 0      Num Gas Bombs: 0      Serial #:

Laboratory Name:      Laboratory Location:

Recovery Comments: All recovery w as gassy thick heavy emulsified mud  
There w as no final opening or shut-in - Shutin Tool w as out of rotaing order w hen it w as ran in  
the hole ?

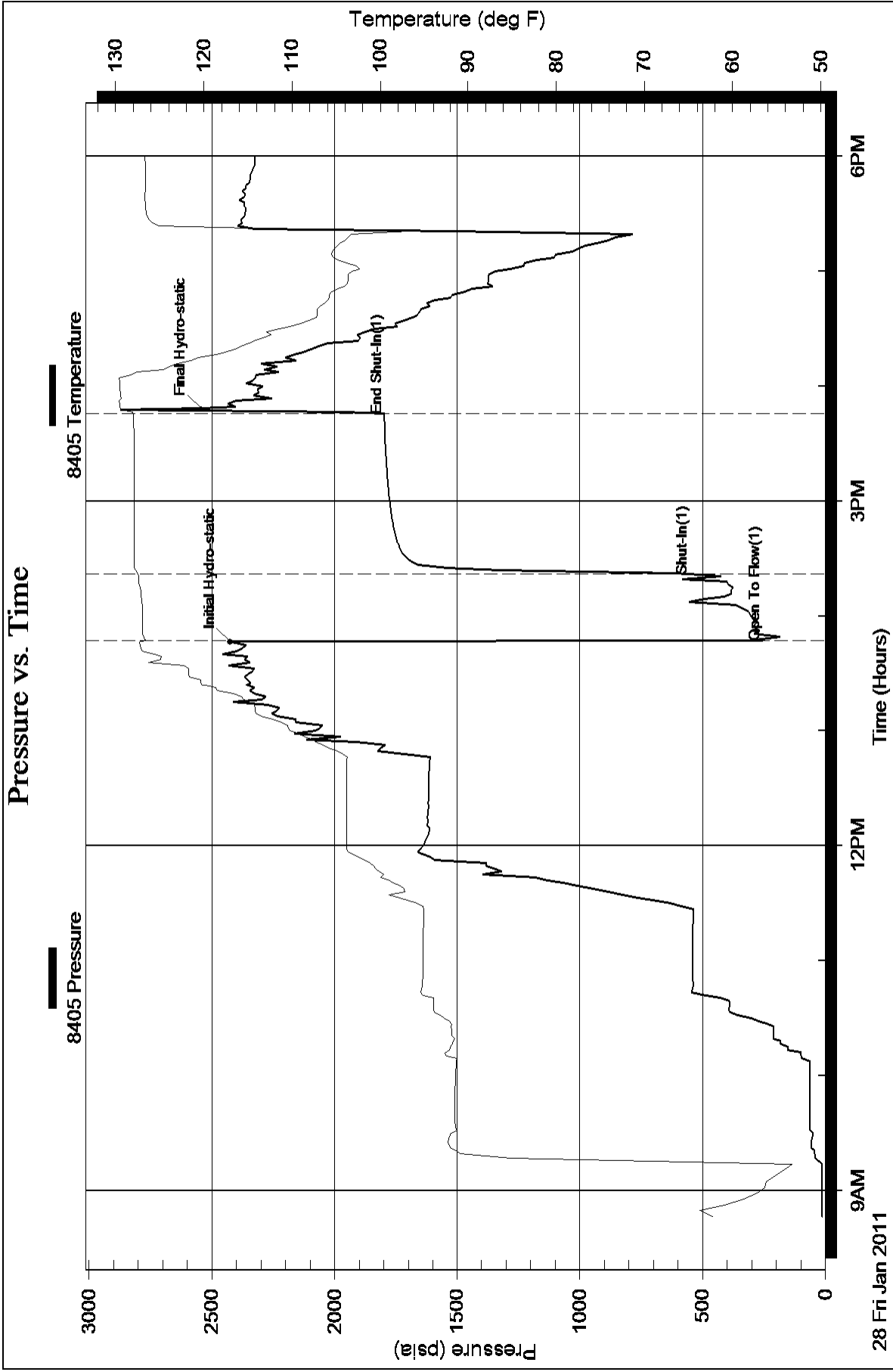
Serial #: 8405

Inside

Woolsey Operating Company

10/35S/12W Barber

DST Test Number: 1



Serial #: 8400

Outside Woolsey Operating Company

10/35S/12W Barber

DST Test Number: 1

