

DRILL STEM TEST REPORT

Prepared For: **Oil Producers Inc. of Kansas**

1710 Waterfront Parkway
Wichita, KS 67206-6603

ATTN: Derek Patterson

2-24s-15w Stafford K

Vosburgh 1-2

Start Date: 2010.12.21 @ 09:04:00

End Date: 2010.12.21 @ 16:10:15

Job Ticket #: 39312 DST #: 1

Trilobite Testing, Inc

PO Box 1733 Hays, KS 67601

ph: 785-625-4778 fax: 785-625-5620



**TRILOBITE
TESTING, INC**

DRILL STEM TEST REPORT

Oil Producers Inc. of Kansas

Vosburgh 1-2

1710 Waterfront Parkway
Wichita, KS 67206-6603

2-24s-15w Stafford K

Job Ticket: 39312

DST#: 1

ATTN: Derek Patterson

Test Start: 2010.12.21 @ 09:04:00

GENERAL INFORMATION:

Formation: **VIOLA**

Deviated: No Whipstock: ft (KB)

Time Tool Opened: 11:07:00

Time Test Ended: 16:10:15

Test Type: Conventional Bottom Hole

Tester: Jake Fahrenbruch

Unit No: 43

Interval: **4044.00 ft (KB) To 4080.00 ft (KB) (TVD)**

Reference Elevations: 2006.00 ft (KB)

Total Depth: 4080.00 ft (KB) (TVD)

2002.00 ft (CF)

Hole Diameter: 7.88 inches Hole Condition: Good

KB to GR/CF: 4.00 ft

Serial #: 6799

Outside

Press@RunDepth: 28.56 psig @ 4045.00 ft (KB)

Capacity: 8000.00 psig

Start Date: 2010.12.21

End Date:

2010.12.21

Last Calib.: 2010.12.21

Start Time: 09:04:05

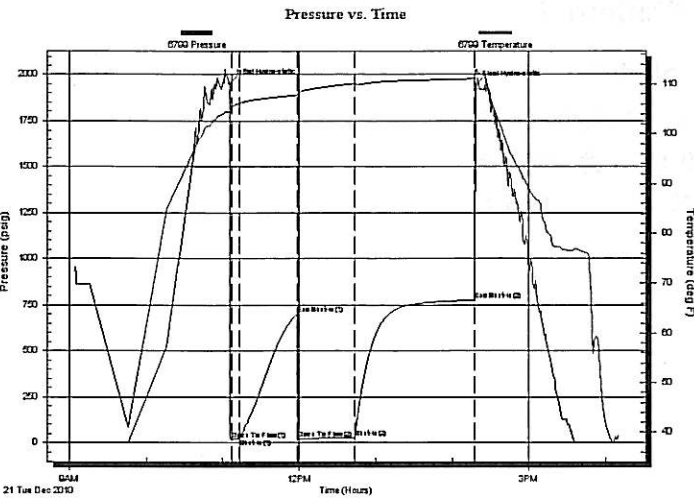
End Time:

16:10:14

Time On Btm: 2010.12.21 @ 11:05:45

Time Off Btm: 2010.12.21 @ 14:18:45

TEST COMMENT: IF: Fair blow, built to BOB in 7 minutes.
IS: Bled off, no blow back.
FF: Strong blow, built to BOB immediately. No GTS.
FS: Bled off, no blow back.



PRESSURE SUMMARY

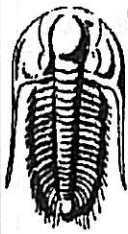
Time (Min.)	Pressure (psig)	Temp (deg F)	Annotation
0	1953.03	104.40	Initial Hydro-static
2	19.02	105.34	Open To Flow (1)
8	22.30	106.09	Shut-In(1)
53	703.55	107.79	End Shut-In(1)
54	24.41	107.85	Open To Flow (2)
98	28.56	110.15	Shut-In(2)
193	776.69	111.16	End Shut-In(2)
193	1946.61	112.70	Final Hydro-static

Recovery

Length (ft)	Description	Volume (bbl)
50.00	Mud 100% m	0.25
0.00	2250' Gas In Pipe	0.00

Gas Rates

Choke (inches)	Pressure (psig)	Gas Rate (Mcf/d)



**TRILOBITE
TESTING, INC**

DRILL STEM TEST REPORT

TOOL DIAGRAM

Oil Producers Inc. of Kansas

Vosburgh 1-2

1710 Waterfront Parkway
Wichita, KS 67206-6603

2-24s-15w Stafford K

Job Ticket: 39312

DST#: 1

ATTN: Derek Patterson

Test Start: 2010.12.21 @ 09:04:00

Tool Information

Drill Pipe:	Length: 3800.00 ft	Diameter: 3.80 inches	Volume: 53.30 bbl	Tool Weight: 2500.00 lb
Heavy Wt. Pipe:	Length: 0.00 ft	Diameter: 0.00 inches	Volume: 0.00 bbl	Weight set on Packer: 25000.00 lb
Drill Collar:	Length: 240.00 ft	Diameter: 2.25 inches	Volume: 1.18 bbl	Weight to Pull Loose: 70000.00 lb
		Total Volume:	54.48 bbl	Tool Chased 4.00 ft
Drill Pipe Above KB:	24.00 ft			String Weight: Initial 52000.00 lb
Depth to Top Packer:	4044.00 ft			Final 52000.00 lb
Depth to Bottom Packer:	ft			
Interval between Packers:	36.00 ft			
Tool Length:	64.00 ft			
Number of Packers:	2	Diameter: 6.75 inches		

Tool Comments:

Tool Description	Length (ft)	Serial No.	Position	Depth (ft)	Accum. Lengths
Shut In Tool	5.00			4021.00	
Hydraulic tool	5.00			4026.00	
Jars	5.00			4031.00	
Safety Joint	3.00			4034.00	
Packer	5.00			4039.00	28.00 Bottom Of Top Packer
Packer	5.00			4044.00	
Stubb	1.00			4045.00	
Recorder	0.00	8655	Inside	4045.00	
Recorder	0.00	6799	Outside	4045.00	
Perforations	30.00			4075.00	
Bullnose	5.00			4080.00	36.00 Bottom Packers & Anchor

Total Tool Length: 64.00



**TRILOBITE
TESTING, INC**

DRILL STEM TEST REPORT

FLUID SUMMARY

Oil Producers Inc. of Kansas

Vosburgh 1-2

1710 Waterfront Parkway
Wichita, KS 67206-6603

2-24s-15w Stafford K

Job Ticket: 39312 DST#: 1

ATTN: Derek Patterson

Test Start: 2010.12.21 @ 09:04:00

Mud and Cushion Information

Mud Type: Gel Chem

Cushion Type:

Oil API:

deg API

Mud Weight: 9.00 lb/gal

Cushion Length:

ft

Water Salinity:

ppm

Viscosity: 45.00 sec/qt

Cushion Volume:

bbbl

Water Loss: 11.98 in³

Gas Cushion Type:

Resistivity: ohm.m

Gas Cushion Pressure:

psig

Salinity: 9600.00 ppm

Filter Cake: inches

Recovery Information

Recovery Table

Length ft	Description	Volume bbl
50.00	Mud 100% _m	0.246
0.00	2250' Gas In Pipe	0.000

Total Length: 50.00 ft Total Volume: 0.246 bbl

Num Fluid Samples: 0

Num Gas Bombs: 0

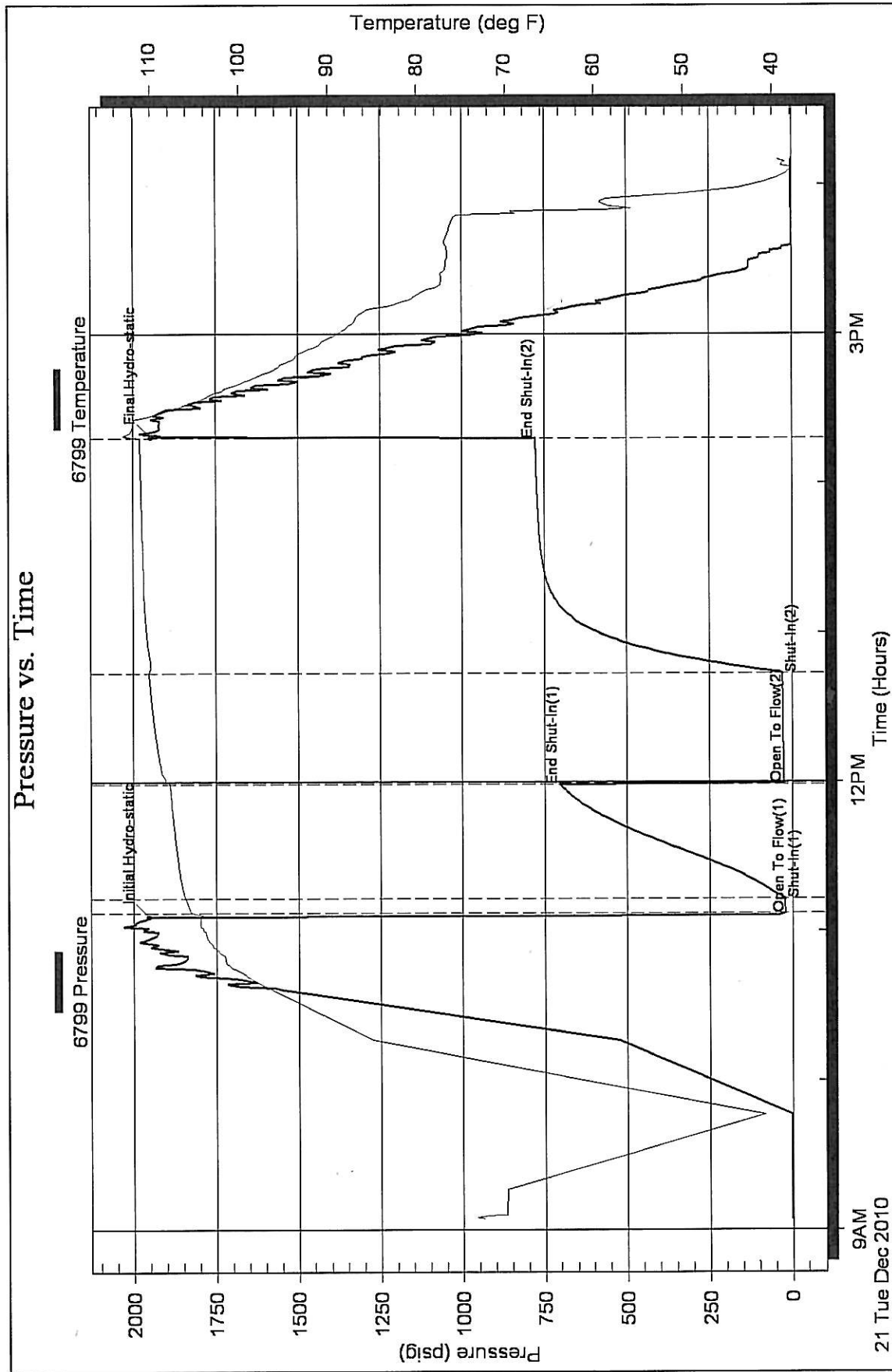
Serial #:

Laboratory Name:

Laboratory Location:

Recovery Comments:

Pressure vs. Time



Faint, illegible text, possibly bleed-through from the reverse side of the page. The text is too light to transcribe accurately.