



## DRILL STEM TEST REPORT

Prepared For: **SHELBY RESOURCES L.L.C**

2717 CANAL BLVD SUITE C HAYS KS 67601

ATTN: CHARLIE STURDAVANT

**24-17S14W BARTON**

**CLARK #5-24**

Start Date: 2011.02.25 @ 12:03:00

End Date: 2011.02.25 @ 19:50:30

Job Ticket #: 16097                      DST #: 2

Superior Testers Enterprises LLC  
PO Box 138 Great Bend KS 67530  
1-800-792-6902

Printed: 2011.02.25 @ 20:09:11

SHELBY RESOURCES L.L.C  
CLARK #5-24  
24-17S14W BARTON  
DST # 2  
ARBUCKLE  
2011.02.25



# DRILL STEM TEST REPORT

SHELBY RESOURCES L.L.C

**CLARK #5-24**

2717 CANAL BLVD SUITE C HAYS KS 67601

**24-17S14W BARTON**

ATTN: CHARLIE STURDAVANT

Job Ticket: 16097

**DST#: 2**

Test Start: 2011.02.25 @ 12:03:00

## GENERAL INFORMATION:

Formation: **ARBUCKLE**

Deviated: No Whipstock: ft (KB)

Time Tool Opened: 14:13:30

Time Test Ended: 19:50:30

Test Type: Conventional Bottom Hole (Initial)

Tester: JARED SCHECK

Unit No: 3320-20-GREAT BEND

**Interval: ft (KB) To ft (KB) (TVD)**

Reference Elevations: 1928.00 ft (KB)

Total Depth: 3422.00 ft (KB) (TVD)

1917.00 ft (CF)

Hole Diameter: 7.88 inches Hole Condition: Fair

KB to GR/CF: 11.00 ft

**Serial #: 8419**

**Inside**

Press@RunDepth: 69.61 psia @ 3418.00 ft (KB)

Capacity: 5000.00 psia

Start Date: 2011.02.25

End Date: 2011.02.25

Last Calib.: 2011.02.25

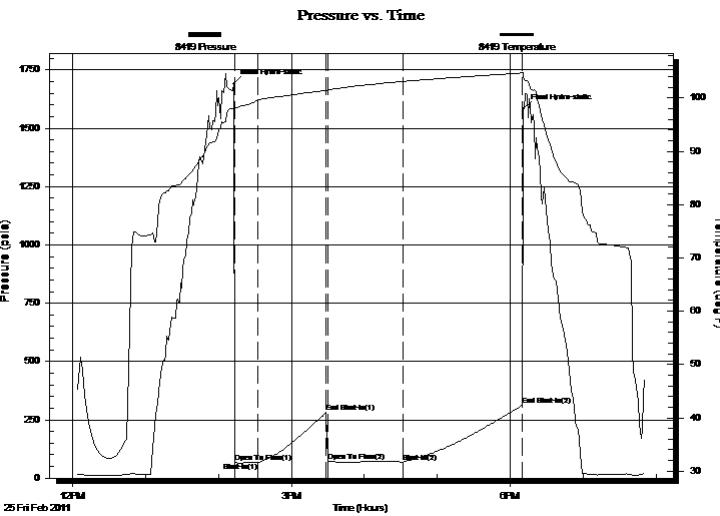
Start Time: 12:03:00

End Time: 19:50:30

Time On Btm: 2011.02.25 @ 14:12:30

Time Off Btm: 2011.02.25 @ 18:11:00

**TEST COMMENT:** 15/INITIAL OPEN:WEAK BUT BUILDING BLOW BUILT 1 1/4 INTO WATER IN 15 MINUTES  
 60/INITIAL SHUT IN:VERY WEAK SURFACE BLOW  
 60/FINAL OPEN:VERY WEAK SURFACE BLOW STAYED STEADY THROUGHOUT OPEN  
 90/FINAL SHUT IN:VERY WEAK SURFACE BLOW



## PRESSURE SUMMARY

Time (Min.)	Pressure (psia)	Temp (deg F)	Annotation
0	1690.98	98.08	Initial Hydro-static
1	69.27	98.03	Open To Flow (1)
20	66.85	99.55	Shut-In(1)
76	281.07	101.41	End Shut-In(1)
78	73.20	101.50	Open To Flow (2)
140	69.61	103.09	Shut-In(2)
237	311.01	104.67	End Shut-In(2)
239	1582.64	103.97	Final Hydro-static

## Recovery

Length (ft)	Description	Volume (bbl)
15.00	SPOT OIL CUT MUD 1%OIL 99%MUD	0.07

## Gas Rates

Choke (inches)	Pressure (psia)	Gas Rate (Mcf/d)



# DRILL STEM TEST REPORT

SHELBY RESOURCES L.L.C

**CLARK #5-24**

2717 CANAL BLVD SUITE C HAYS KS 67601

**24-17S14W BARTON**

ATTN: CHARLIE STURDAVANT

Job Ticket: 16097

**DST#: 2**

Test Start: 2011.02.25 @ 12:03:00

## GENERAL INFORMATION:

Formation: **ARBUCKLE**

Deviated: No Whipstock: ft (KB)

Time Tool Opened: 14:13:30

Time Test Ended: 19:50:30

Test Type: Conventional Bottom Hole (Initial)

Tester: JARED SCHECK

Unit No: 3320-20-GREAT BEND

**Interval: ft (KB) To ft (KB) (TVD)**

Reference Elevations: 1928.00 ft (KB)

Total Depth: 3422.00 ft (KB) (TVD)

1917.00 ft (CF)

Hole Diameter: 7.88 inches Hole Condition: Fair

KB to GR/CF: 11.00 ft

**Serial #: 8524**

**Outside**

Press@RunDepth: 313.54 psia @ 3419.00 ft (KB)

Capacity: 5000.00 psia

Start Date: 2011.02.25

End Date: 2011.02.25

Last Calib.: 2011.02.25

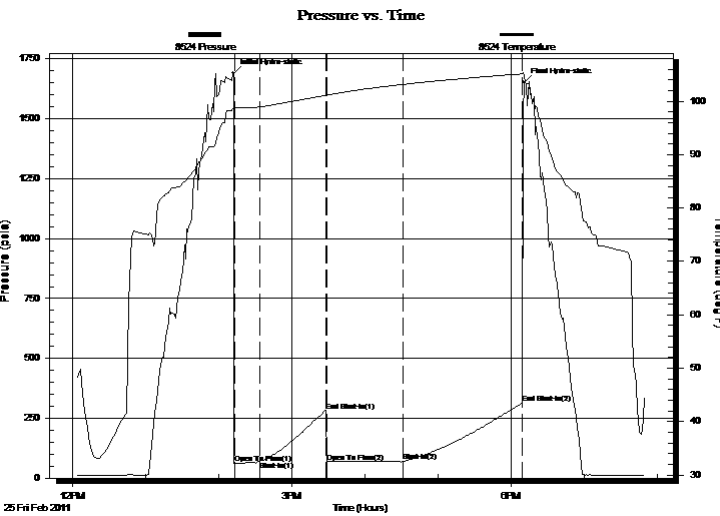
Start Time: 12:03:00

End Time: 19:50:00

Time On Btm: 2011.02.25 @ 14:12:00

Time Off Btm: 2011.02.25 @ 18:10:30

**TEST COMMENT:** 15/INITIAL OPEN:WEAK BUT BUILDING BLOW BUILT 1 1/4 INTO WATER IN 15 MINUTES  
 60/INITIAL SHUT IN:VERY WEAK SURFACE BLOW  
 60/FINAL OPEN:VERY WEAK SURFACE BLOW STAYED STEADY THROUGHOUT OPEN  
 90/FINAL SHUT IN:VERY WEAK SURFACE BLOW



## PRESSURE SUMMARY

Time (Min.)	Pressure (psia)	Temp (deg F)	Annotation
0	1689.23	98.81	Initial Hydro-static
1	60.19	98.75	Open To Flow (1)
22	69.88	98.95	Shut-In(1)
76	281.03	101.11	End Shut-In(1)
77	68.09	101.14	Open To Flow (2)
140	69.86	103.17	Shut-In(2)
237	313.54	105.14	End Shut-In(2)
239	1652.30	105.01	Final Hydro-static

## Recovery

Length (ft)	Description	Volume (bbl)
15.00	SPOT OIL CUT MUD 1%OIL 99%MUD	0.07

## Gas Rates

Choke (inches)	Pressure (psia)	Gas Rate (Mcf/d)



# DRILL STEM TEST REPORT

**TOOL DIAGRAM**

SHELBY RESOURCES L.L.C

**CLARK #5-24**

2717 CANAL BLVD SUITE C HAYS KS 67601

**24-17S14W BARTON**

Job Ticket: 16097

**DST#: 2**

ATTN: CHARLIE STURDAVANT

Test Start: 2011.02.25 @ 12:03:00

## Tool Information

Drill Pipe:	Length: 3197.00 ft	Diameter: 3.80 inches	Volume: 44.85 bbl	Tool Weight:	1000.00 lb
Heavy Wt. Pipe:	Length: 0.00 ft	Diameter: 0.00 inches	Volume: 0.00 bbl	Weight set on Packer:	20000.00 lb
Drill Collar:	Length: 180.00 ft	Diameter: 2.25 inches	Volume: 0.89 bbl	Weight to Pull Loose:	80000.00 lb
			<u>Total Volume: 45.74 bbl</u>	Tool Chased	0.00 ft
Drill Pipe Above KB:	31.00 ft			String Weight: Initial	60000.00 lb
Depth to Top Packer:	3375.00 ft			Final	60000.00 lb
Depth to Bottom Packer:	ft				
Interval between Packers:	47.00 ft				
Tool Length:	76.00 ft				
Number of Packers:	2	Diameter:	6.75 inches		
Tool Comments:					

Tool Description	Length (ft)	Serial No.	Position	Depth (ft)	Accum. Lengths
------------------	-------------	------------	----------	------------	----------------

Change Over Sub	1.00			3347.00	
Shut-In Tool	5.00			3352.00	
Hydraulic Tool	5.00			3357.00	
Jars	6.00			3363.00	
Safety Joint	2.00			3365.00	
Packer	5.00			3370.00	29.00 Bottom Of Top Packer
Packer	5.00			3375.00	
Change Over Sub	0.75			3375.75	
Drill Pipe	31.50			3407.25	
Change Over Sub	0.75			3408.00	
Perforations	9.00			3417.00	
Recorder	1.00	8419	Inside	3418.00	
Recorder	1.00	8524	Outside	3419.00	
Bullnose	3.00			3422.00	47.00 Bottom Packers & Anchor

**Total Tool Length: 76.00**



# DRILL STEM TEST REPORT

## FLUID SUMMARY

SHELBY RESOURCES L.L.C

**CLARK #5-24**

2717 CANAL BLVD SUITE C HAYS KS 67601

**24-17S14W BARTON**

Job Ticket: 16097

**DST#: 2**

ATTN: CHARLIE STURDAVANT

Test Start: 2011.02.25 @ 12:03:00

### Mud and Cushion Information

Mud Type: Gel Chem

Mud Weight: 9.00 lb/gal

Viscosity: 51.00 sec/qt

Water Loss: 8.00 in<sup>3</sup>

Resistivity: ohm.m

Salinity: 4900.00 ppm

Filter Cake: 1.00 inches

Cushion Type:

Cushion Length: ft

Cushion Volume: bbl

Gas Cushion Type:

Gas Cushion Pressure: psia

Oil API:

Water Salinity: deg API

ppm

### Recovery Information

Recovery Table

Length ft	Description	Volume bbl
15.00	SPOT OIL CUT MUD 1%OIL 99%MUD	0.074

Total Length: 15.00 ft      Total Volume: 0.074 bbl

Num Fluid Samples: 0

Num Gas Bombs: 0

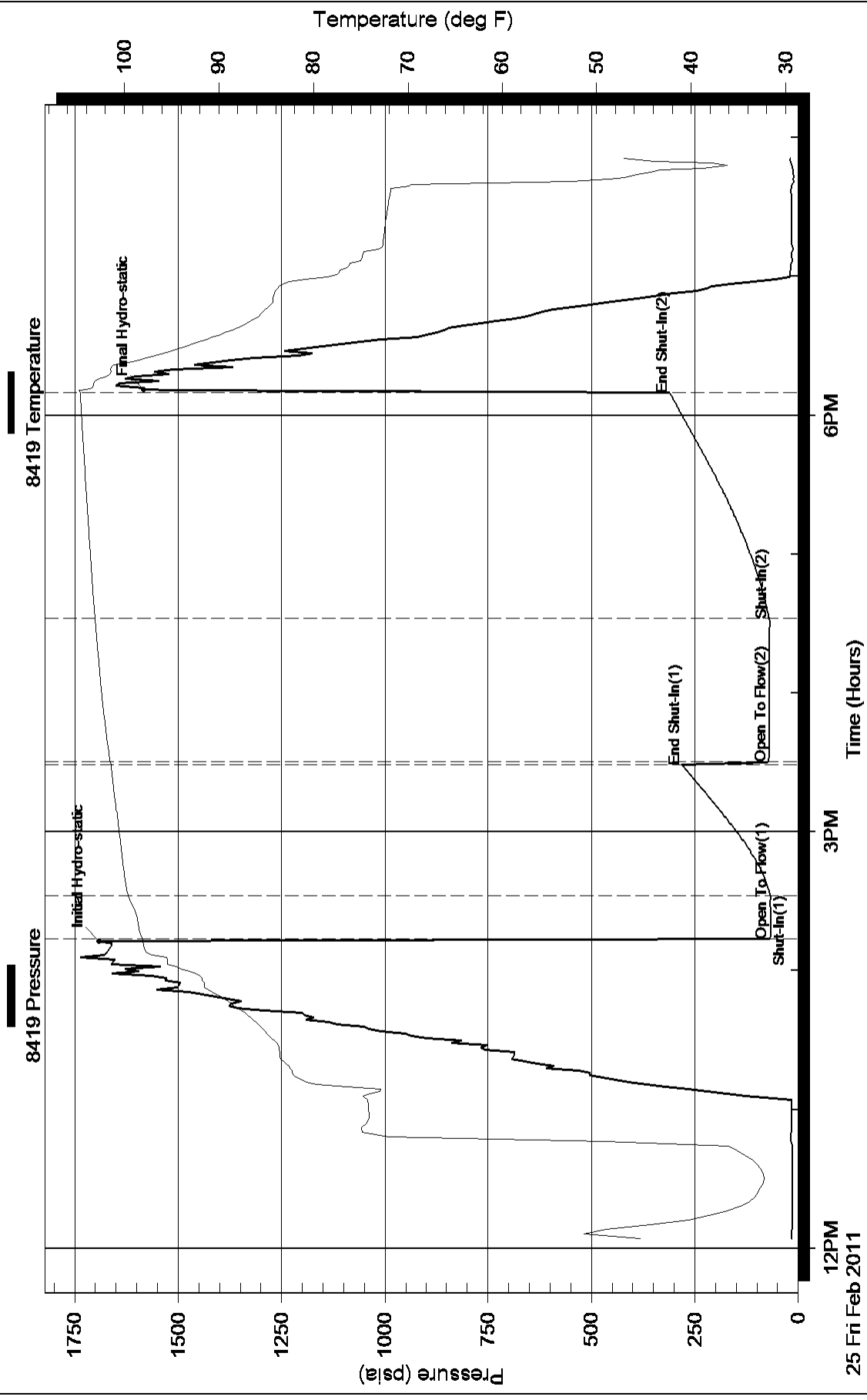
Serial #:

Laboratory Name:

Laboratory Location:

Recovery Comments:

### Pressure vs. Time



### Pressure vs. Time

