



DRILL STEM TEST REPORT

Prepared For: **Shelby Resources L.L.C.**

445 Union Boulevard Suite 208
Lakewood , Colorado 80228

ATTN: Charley Sturdavant

`24-17s-14w

Clark #4-24

Start Date: 2010.11.18 @ 12:15:00

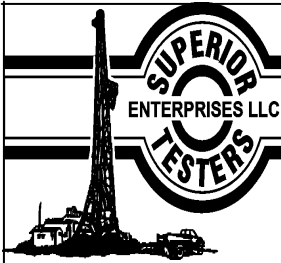
End Date: 2010.11.18 @ 00:00:00

Job Ticket #: 15746 DST #: 2

Superior Testers Enterprises LLC
PO Box 138 Great Bend KS 67530
1-800-792-6902

Printed: 2010.11.18 @ 07:13:26

Shelby Resources L.L.C. Clark #4-24 `24-17s-14w DST # 2 Arbuckle 2010.11.18



DRILL STEM TEST REPORT

Shelby Resources L.L.C.
445 Union Boulevard Suite 208
Lakewood, Colorado 80228
ATTN: Charley Sturdavant

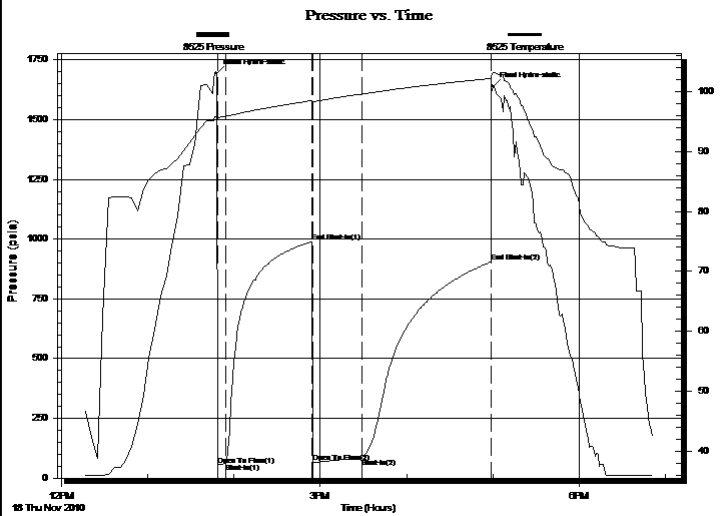
Clark #4-24
24-17s-14w
Job Ticket: 15746 **DST#: 2**
Test Start: 2010.11.18 @ 12:15:00

GENERAL INFORMATION:

Formation: **Arbuckle**
Deviated: No Whipstock: ft (KB) Test Type: Conventional Bottom Hole (Initial)
Time Tool Opened: 00:00:00 Tester: Gene Budig
Time Test Ended: 00:00:00 Unit No: 3335-38
Interval: 3374.00 ft (KB) To 3422.00 ft (KB) (TVD) Reference Elevations: 1927.00 ft (KB)
Total Depth: 3422.00 ft (KB) (TVD) 1916.00 ft (CF)
Hole Diameter: 7.88 inches Hole Condition: Fair KB to GR/CF: 11.00 ft

Serial #: 8525 Outside
Press @ Run Depth: 904.06 psia @ 3419.30 ft (KB) Capacity: 5000.00 psia
Start Date: 2010.11.18 End Date: 2010.11.18 Last Calib.: 2010.11.18
Start Time: 12:17:00 End Time: 18:51:30 Time On Btm: 2010.11.18 @ 13:48:00
Time Off Btm: 2010.11.18 @ 17:00:00

TEST COMMENT: 1st Opening 05 Minutes weak building blow built to 1 1/2 inches into the water
1st Shut-In 60 Minutes-No blow back
2nd Opening 35 Minutes-Weak blow built to 1 inch into the water decreased and died in 28 minutes
2nd Shut-In 90 Minutes-No blow back



PRESSURE SUMMARY

| Time (Min.) | Pressure (psia) | Temp (deg F) | Annotation |
|-------------|-----------------|--------------|----------------------|
| 0 | 1694.64 | 95.84 | Initial Hydro-static |
| 1 | 53.45 | 95.42 | Open To Flow (1) |
| 7 | 61.25 | 95.89 | Shut-In(1) |
| 66 | 989.56 | 98.49 | End Shut-In(1) |
| 67 | 66.32 | 98.36 | Open To Flow (2) |
| 101 | 83.14 | 99.59 | Shut-In(2) |
| 191 | 904.06 | 102.19 | End Shut-In(2) |
| 192 | 1639.04 | 103.20 | Final Hydro-static |

Recovery

| Length (ft) | Description | Volume (bbl) |
|-------------|-----------------------------|--------------|
| 30.00 | Clean oil | 0.15 |
| 50.00 | oil cut mud 20% oil 80% Mud | 0.25 |
| | | |
| | | |
| | | |
| | | |

Gas Rates

| Choke (inches) | Pressure (psia) | Gas Rate (Mcf/d) |
|----------------|-----------------|------------------|
| | | |



DRILL STEM TEST REPORT

Shelby Resources L.L.C.

Clark #4-24

445 Union Boulevard Suite 208
Lakewood, Colorado 80228

24-17s-14w

Job Ticket: 15746

DST#: 2

ATTN: Charley Sturdavant

Test Start: 2010.11.18 @ 12:15:00

GENERAL INFORMATION:

Formation: **Arbuckle**

Deviated: No Whipstock: ft (KB)

Time Tool Opened: 00:00:00

Time Test Ended: 00:00:00

Test Type: Conventional Bottom Hole (Initial)

Tester: Gene Budig

Unit No: 3335-38

Interval: 3374.00 ft (KB) To 3422.00 ft (KB) (TVD)

Reference Elevations: 1927.00 ft (KB)

Total Depth: 3422.00 ft (KB) (TVD)

1916.00 ft (CF)

Hole Diameter: 7.88 inches Hole Condition: Fair

KB to GR/CF: 11.00 ft

Serial #: 8524

Inside

Press @ Run Depth: 905.06 psia @ 3418.30 ft (KB)

Capacity: 5000.00 psia

Start Date: 2010.11.18

End Date: 2010.11.18

Last Calib.: 2010.11.18

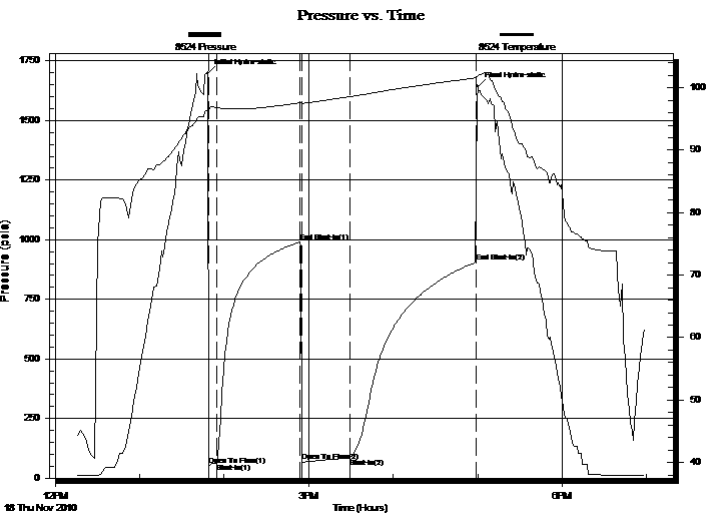
Start Time: 12:16:00

End Time: 18:58:30

Time On Btm: 2010.11.18 @ 13:48:30

Time Off Btm: 2010.11.18 @ 17:00:00

TEST COMMENT: 1st Opening 05 Minutes weak building blow built to 1 1/2 inches into the water
1st Shut-In 60 Minutes-No blow back
2nd Opening 35 Minutes-Weak blow built to 1 inch into the water decreased and died in 28 minutes
2nd Shut-In 90 Minutes-No blow back



PRESSURE SUMMARY

| Time (Min.) | Pressure (psia) | Temp (deg F) | Annotation |
|-------------|-----------------|--------------|----------------------|
| 0 | 1696.93 | 96.47 | Initial Hydro-static |
| 1 | 54.26 | 96.10 | Open To Flow (1) |
| 6 | 62.38 | 96.81 | Shut-In(1) |
| 66 | 990.46 | 97.58 | End Shut-In(1) |
| 67 | 68.59 | 97.51 | Open To Flow (2) |
| 101 | 84.10 | 98.56 | Shut-In(2) |
| 190 | 905.06 | 101.56 | End Shut-In(2) |
| 192 | 1643.33 | 101.97 | Final Hydro-static |

Recovery

| Length (ft) | Description | Volume (bbl) |
|-------------|-----------------------------|--------------|
| 30.00 | Clean oil | 0.15 |
| 50.00 | oil cut mud 20% oil 80% Mud | 0.25 |
| | | |
| | | |
| | | |

Gas Rates

| | Choke (inches) | Pressure (psia) | Gas Rate (Mcf/d) |
|--|----------------|-----------------|------------------|
| | | | |



DRILL STEM TEST REPORT

TOOL DIAGRAM

Shelby Resources L.L.C.
 445 Union Boulevard Suite 208
 Lakewood, Colorado 80228
 ATTN: Charley Sturdavant

Clark #4-24
24-17s-14w
 Job Ticket: 15746 **DST#: 2**
 Test Start: 2010.11.18 @ 12:15:00

Tool Information

| | | | | |
|---------------------------|--------------------|-----------------------|--------------------------------|------------------------------------|
| Drill Pipe: | Length: 3164.00 ft | Diameter: 3.80 inches | Volume: 44.38 bbl | Tool Weight: 2000.00 lb |
| Heavy Wt. Pipe: | Length: 0.00 ft | Diameter: 2.76 inches | Volume: 0.00 bbl | Weight set on Packer: 20000.00 lb |
| Drill Collar: | Length: 187.00 ft | Diameter: 2.25 inches | Volume: 0.92 bbl | Weight to Pull Loose: 70000.00 lb |
| | | | <u>Total Volume: 45.30 bbl</u> | Tool Chased 0.00 ft |
| Drill Pipe Above KB: | 5.00 ft | | | String Weight: Initial 62000.00 lb |
| Depth to Top Packer: | 3374.00 ft | | | Final 62000.00 lb |
| Depth to Bottom Packer: | ft | | | |
| Interval between Packers: | 48.30 ft | | | |
| Tool Length: | 76.30 ft | | | |
| Number of Packers: | 2 | Diameter: 6.75 inches | | |

Tool Comments:

| Tool Description | Length (ft) | Serial No. | Position | Depth (ft) | Accum. Lengths |
|------------------|-------------|------------|----------|------------|------------------------------------|
| Shut-In Tool | 5.00 | | | 3351.00 | |
| Hydraulic Tool | 5.00 | | | 3356.00 | |
| Jars | 6.00 | | | 3362.00 | |
| Safety Joint | 2.00 | | | 3364.00 | |
| Packer | 5.00 | | | 3369.00 | 28.00 Bottom Of Top Packer |
| Packer | 5.00 | | | 3374.00 | |
| Perforations | 5.00 | | | 3379.00 | |
| Change Over Sub | 0.75 | | | 3379.75 | |
| Drill Pipe | 31.80 | | | 3411.55 | |
| Change Over Sub | 0.75 | | | 3412.30 | |
| Perforations | 5.00 | | | 3417.30 | |
| Recorder | 1.00 | 8524 | Inside | 3418.30 | |
| Recorder | 1.00 | 8525 | Outside | 3419.30 | |
| Bull Plug | 3.00 | | | 3422.30 | 48.30 Bottom Packers & Anchor |

Total Tool Length: 76.30



DRILL STEM TEST REPORT

FLUID SUMMARY

Shelby Resources L.L.C.

Clark #4-24

445 Union Boulevard Suite 208
Lakewood, Colorado 80228

24-17s-14w

Job Ticket: 15746

DST#: 2

ATTN: Charley Sturdavant

Test Start: 2010.11.18 @ 12:15:00

Mud and Cushion Information

Mud Type: Gel Chem
Mud Weight: 9.00 lb/gal
Viscosity: 48.00 sec/qt
Water Loss: 8.79 in³
Resistivity: ohm.m
Salinity: 5300.00 ppm
Filter Cake: inches

Cushion Type:
Cushion Length: ft
Cushion Volume: bbl
Gas Cushion Type:
Gas Cushion Pressure: psia

Oil API: deg API
Water Salinity: ppm

Recovery Information

Recovery Table

| Length ft | Description | Volume bbl |
|--------------|-----------------------------|---------------|
| 30.00 | Clean oil | 0.148 |
| 50.00 | oil cut mud 20% oil 80% Mud | 0.246 |

Total Length: 80.00 ft Total Volume: 0.394 bbl

Num Fluid Samples: 0

Num Gas Bombs: 0

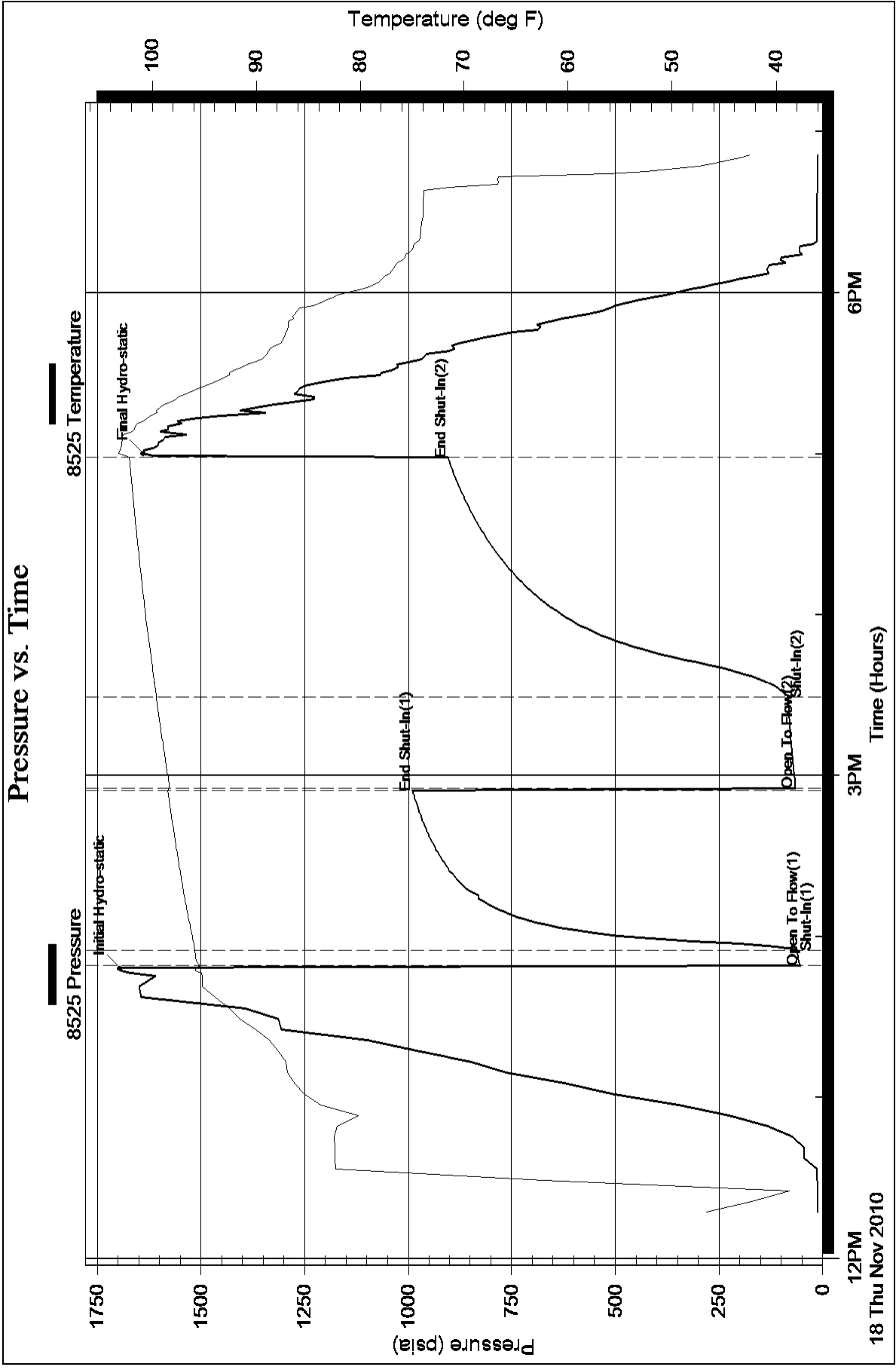
Serial #:

Laboratory Name:

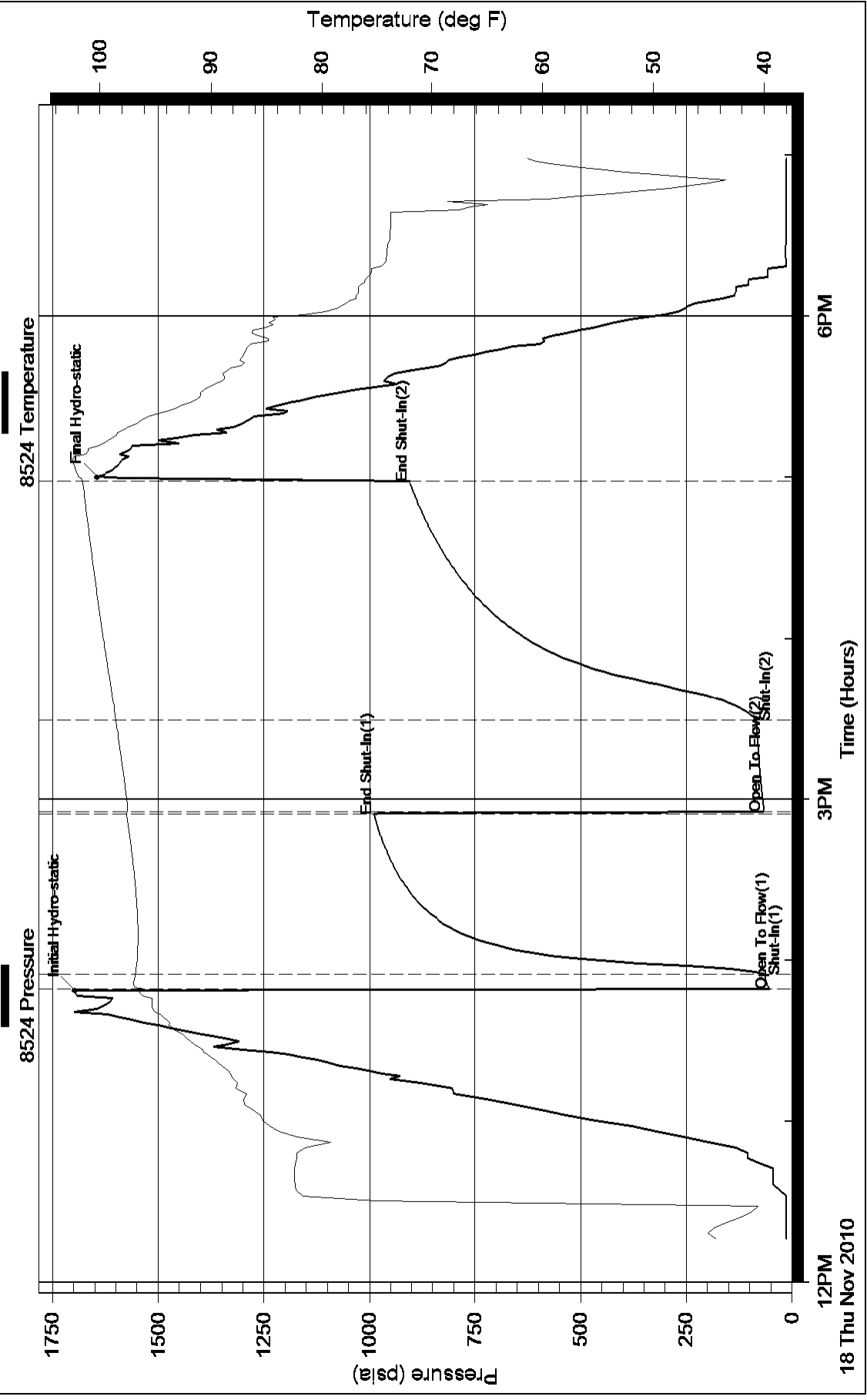
Laboratory Location:

Recovery Comments:

Pressure vs. Time



Pressure vs. Time



12PM
18 Thu Nov 2010

3PM

6PM