



## DRILL STEM TEST REPORT

Prepared For: **Shelby Resources L.L.C.**

445 Union Boulevard Suite 208  
Lakewood , Colorado 80228

ATTN: Charley Sturdavant

**`24-17s-14w**

**Clark #4-24**

Start Date: 2010.11.18 @ 02:10:00

End Date: 2010.11.18 @ 09:55:30

Job Ticket #: 15747                      DST #: 3

Superior Testers Enterprises LLC  
PO Box 138 Great Bend KS 67530  
1-800-792-6902

Printed: 2010.11.18 @ 22:15:23

Shelby Resources L.L.C.      Clark #4-24      `24-17s-14w      DST # 3      Arbuckle      2010.11.18



# DRILL STEM TEST REPORT

Shelby Resources L.L.C.

**Clark #4-24**

445 Union Boulevard Suite 208  
Lakewood, Colorado 80228

**24-17s-14w**

Job Ticket: 15747

**DST#: 3**

ATTN: Charley Sturdavant

Test Start: 2010.11.18 @ 02:10:00

## GENERAL INFORMATION:

Formation: **Arbuckle**

Deviated: No Whipstock: ft (KB)

Time Tool Opened: 03:47:00

Time Test Ended: 09:55:30

Test Type: Conventional Bottom Hole (Initial)

Tester: Gene Budig

Unit No: 3335

**Interval: 3422.00 ft (KB) To 3432.00 ft (KB) (TVD)**

Reference Elevations: 1927.00 ft (KB)

Total Depth: 3432.00 ft (KB) (TVD)

1916.00 ft (CF)

Hole Diameter: 7.88 inches Hole Condition: Fair

KB to GR/CF: 11.00 ft

**Serial #: 8524 Inside**

Press @ Run Depth: 118.16 psia @ 3428.00 ft (KB)

Capacity: 5000.00 psia

Start Date: 2010.11.18

End Date: 2010.11.18

Last Calib.: 2010.11.18

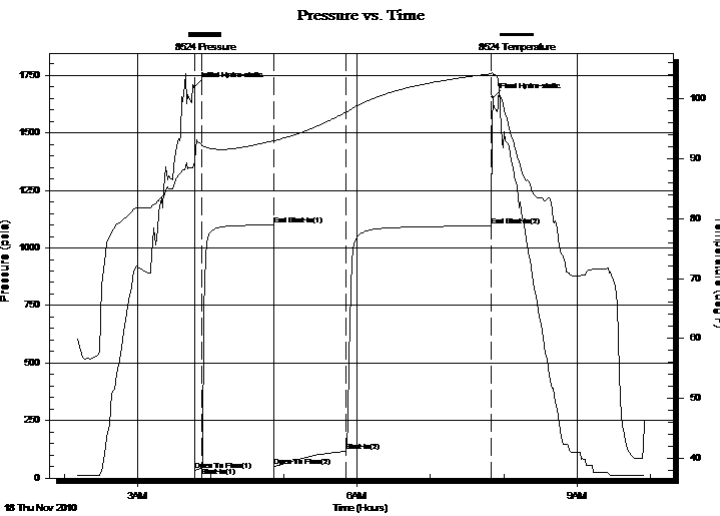
Start Time: 02:10:00

End Time: 09:55:30

Time On Btm: 2010.11.18 @ 03:46:30

Time Off Btm: 2010.11.18 @ 07:51:00

**TEST COMMENT:** 1st Opening 05 Minutes-Weak building blow built to 2 1/2 inches into the water  
 1st Shut-In 60 Minutes-No Blow back  
 2nd Opening 60 Minutes-Weak building blow built to the bottom of a 5 gallon bucket in 52 Minutes  
 2ns shut-In 120 Minutes- No blow back



## PRESSURE SUMMARY

Time (Min.)	Pressure (psia)	Temp (deg F)	Annotation
0	1700.23	89.50	Initial Hydro-static
1	34.13	89.53	Open To Flow (1)
7	44.93	92.18	Shut-In(1)
65	1099.49	92.99	End Shut-In(1)
66	49.64	92.94	Open To Flow (2)
125	118.16	97.74	Shut-In(2)
244	1095.32	104.18	End Shut-In(2)
245	1653.92	104.27	Final Hydro-static

## Recovery

Length (ft)	Description	Volume (bbl)
150.00	Clean gassy oil Gravity 37 corrected	0.74
0.00	15% Gas 85% Oil	0.00
30.00	Oil & Gas cut mud	0.15
0.00	5% Gas 10% Oil 85% Mud	0.00
40.00	Oil and Gas cut muddy water	0.50
0.00	5% Gas 15% Oil 40% Mud 40% Water	0.00

## Gas Rates

Choke (inches)	Pressure (psia)	Gas Rate (Mcf/d)



# DRILL STEM TEST REPORT

Shelby Resources L.L.C.

**Clark #4-24**

445 Union Boulevard Suite 208  
Lakewood, Colorado 80228

**24-17s-14w**

Job Ticket: 15747

**DST#: 3**

ATTN: Charley Sturdavant

Test Start: 2010.11.18 @ 02:10:00

## GENERAL INFORMATION:

Formation: **Arbuckle**

Deviated: No Whipstock: ft (KB)

Time Tool Opened: 03:47:00

Time Test Ended: 09:55:30

Test Type: Conventional Bottom Hole (Initial)

Tester: Gene Budig

Unit No: 3335

**Interval: 3422.00 ft (KB) To 3432.00 ft (KB) (TVD)**

Reference Elevations: 1927.00 ft (KB)

Total Depth: 3432.00 ft (KB) (TVD)

1916.00 ft (CF)

Hole Diameter: 7.88 inches Hole Condition: Fair

KB to GR/CF: 11.00 ft

**Serial #: 2525 Outside**

Press @ Run Depth: 1094.29 psia @ 3429.00 ft (KB)

Capacity: 5000.00 psia

Start Date: 2010.11.18

End Date: 2010.11.18

Last Calib.: 2010.11.18

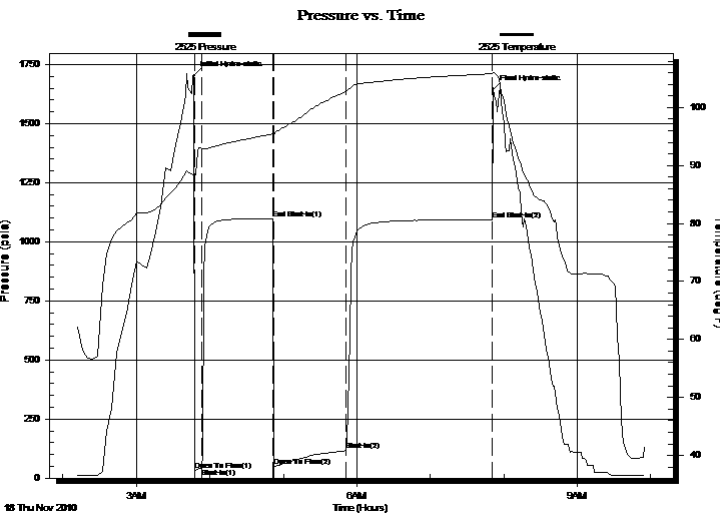
Start Time: 02:10:00

End Time: 09:55:00

Time On Btm: 2010.11.18 @ 03:47:00

Time Off Btm: 2010.11.18 @ 07:51:30

**TEST COMMENT:** 1st Opening 05 Minutes-Weak building blow built to 2 1/2 inches into the water  
 1st Shut-In 60 Minutes-No Blow back  
 2nd Opening 60 Minutes-Weak building blow built to the bottom of a 5 gallon bucket in 52 Minutes  
 2ns shut-In 120 Minutes- No blow back



## PRESSURE SUMMARY

Time (Min.)	Pressure (psia)	Temp (deg F)	Annotation
0	1702.30	88.20	Initial Hydro-static
1	33.30	88.06	Open To Flow (1)
6	43.30	92.99	Shut-In(1)
65	1098.62	95.46	End Shut-In(1)
65	48.27	95.14	Open To Flow (2)
124	116.59	102.85	Shut-In(2)
244	1094.29	105.85	End Shut-In(2)
245	1644.32	106.02	Final Hydro-static

## Recovery

Length (ft)	Description	Volume (bbl)
150.00	Clean gassy oil Gravity 37 corrected	0.74
0.00	15% Gas 85% Oil	0.00
30.00	Oil & Gas cut mud	0.15
0.00	5% Gas 10% Oil 85% Mud	0.00
40.00	Oil and Gas cut muddy water	0.50
0.00	5% Gas 15% Oil 40% Mud 40% Water	0.00

## Gas Rates

Choke (inches)	Pressure (psia)	Gas Rate (Mcf/d)



# DRILL STEM TEST REPORT

**TOOL DIAGRAM**

Shelby Resources L.L.C.

**Clark #4-24**

445 Union Boulevard Suite 208  
Lakewood, Colorado 80228

**24-17s-14w**

Job Ticket: 15747

**DST#: 3**

ATTN: Charley Sturdavant

Test Start: 2010.11.18 @ 02:10:00

## Tool Information

Drill Pipe:	Length: 3232.00 ft	Diameter: 3.80 inches	Volume: 45.34 bbl	Tool Weight: 2000.00 lb
Heavy Wt. Pipe:	Length: 0.00 ft	Diameter: 2.76 inches	Volume: 0.00 bbl	Weight set on Packer: 20000.00 lb
Drill Collar:	Length: 187.00 ft	Diameter: 2.25 inches	Volume: 0.92 bbl	Weight to Pull Loose: 75000.00 lb
		Total Volume: 46.26 bbl		Tool Chased 0.00 ft
Drill Pipe Above KB:	25.00 ft			String Weight: Initial 62000.00 lb
Depth to Top Packer:	3422.00 ft			Final 62000.00 lb
Depth to Bottom Packer:	ft			
Interval between Packers:	10.00 ft			
Tool Length:	38.00 ft			
Number of Packers:	2	Diameter: 6.75 inches		

Tool Comments:

Tool Description	Length (ft)	Serial No.	Position	Depth (ft)	Accum. Lengths
Shut-In Tool	5.00			3399.00	
Hydraulic Tool	5.00			3404.00	
Jars	6.00			3410.00	
Safety Joint	2.00			3412.00	
Packer	5.00			3417.00	28.00 Bottom Of Top Packer
Packer	5.00			3422.00	
Perforations	5.00			3427.00	
Recorder	1.00	8524	Inside	3428.00	
Recorder	1.00	2525	Outside	3429.00	
Bull Plug	3.00			3432.00	10.00 Bottom Packers & Anchor
<b>Total Tool Length:</b>	<b>38.00</b>				



# DRILL STEM TEST REPORT

## FLUID SUMMARY

Shelby Resources L.L.C.

**Clark #4-24**

445 Union Boulevard Suite 208  
Lakewood, Colorado 80228

**24-17s-14w**

Job Ticket: 15747

**DST#: 3**

ATTN: Charley Sturdavant

Test Start: 2010.11.18 @ 02:10:00

### Mud and Cushion Information

Mud Type: Gel Chem  
Mud Weight: 9.00 lb/gal  
Viscosity: 56.00 sec/qt  
Water Loss: 11.20 in<sup>3</sup>  
Resistivity: ohm.m  
Salinity: 8100.00 ppm  
Filter Cake: inches

Cushion Type:  
Cushion Length: ft  
Cushion Volume: bbl  
Gas Cushion Type:  
Gas Cushion Pressure: psia

Oil API: deg API  
Water Salinity: ppm

### Recovery Information

Recovery Table

Length ft	Description	Volume bbl
150.00	Clean gassy oil Gravity 37 corrected	0.738
0.00	15% Gas 85% Oil	0.000
30.00	Oil & Gas cut mud	0.148
0.00	5% Gas 10% Oil 85% Mud	0.000
40.00	Oil and Gas cut muddy water	0.497
0.00	5% Gas 15% Oil 40% Mud 40% Water	0.000
0.00	Chlorides 12000	0.000

Total Length: 220.00 ft      Total Volume: 1.383 bbl

Num Fluid Samples: 0

Num Gas Bombs: 0

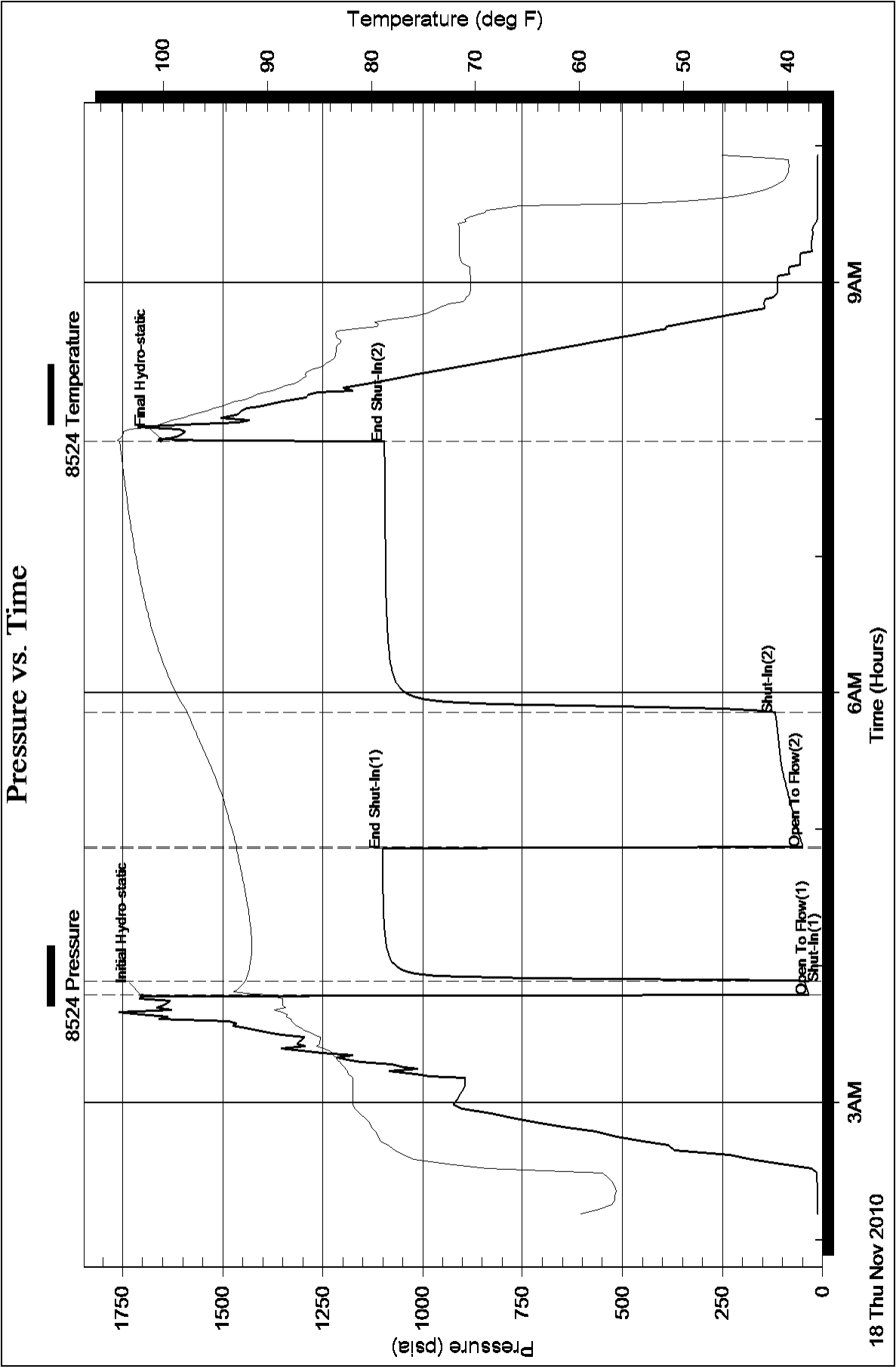
Serial #:

Laboratory Name:

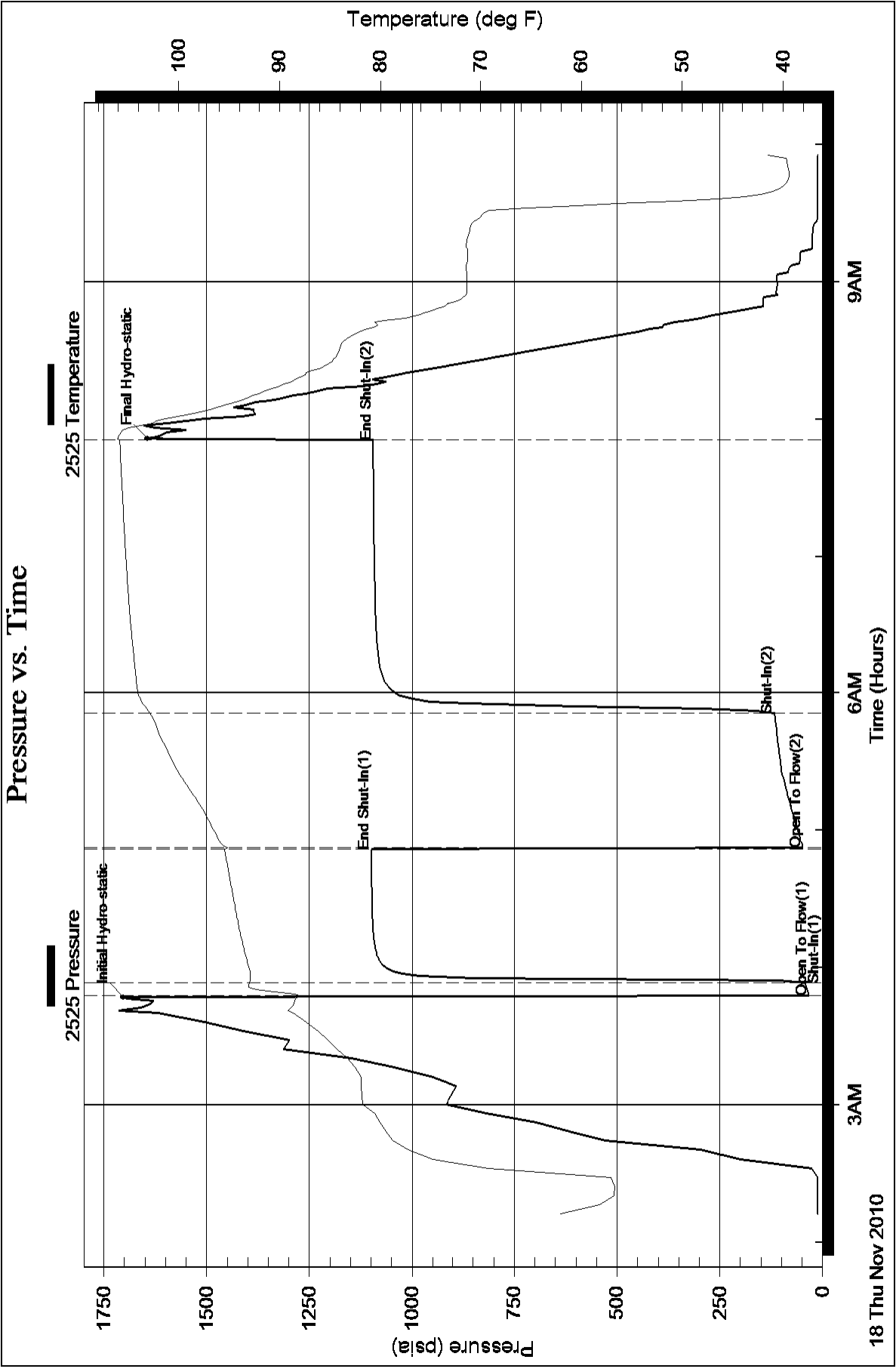
Laboratory Location:

Recovery Comments:

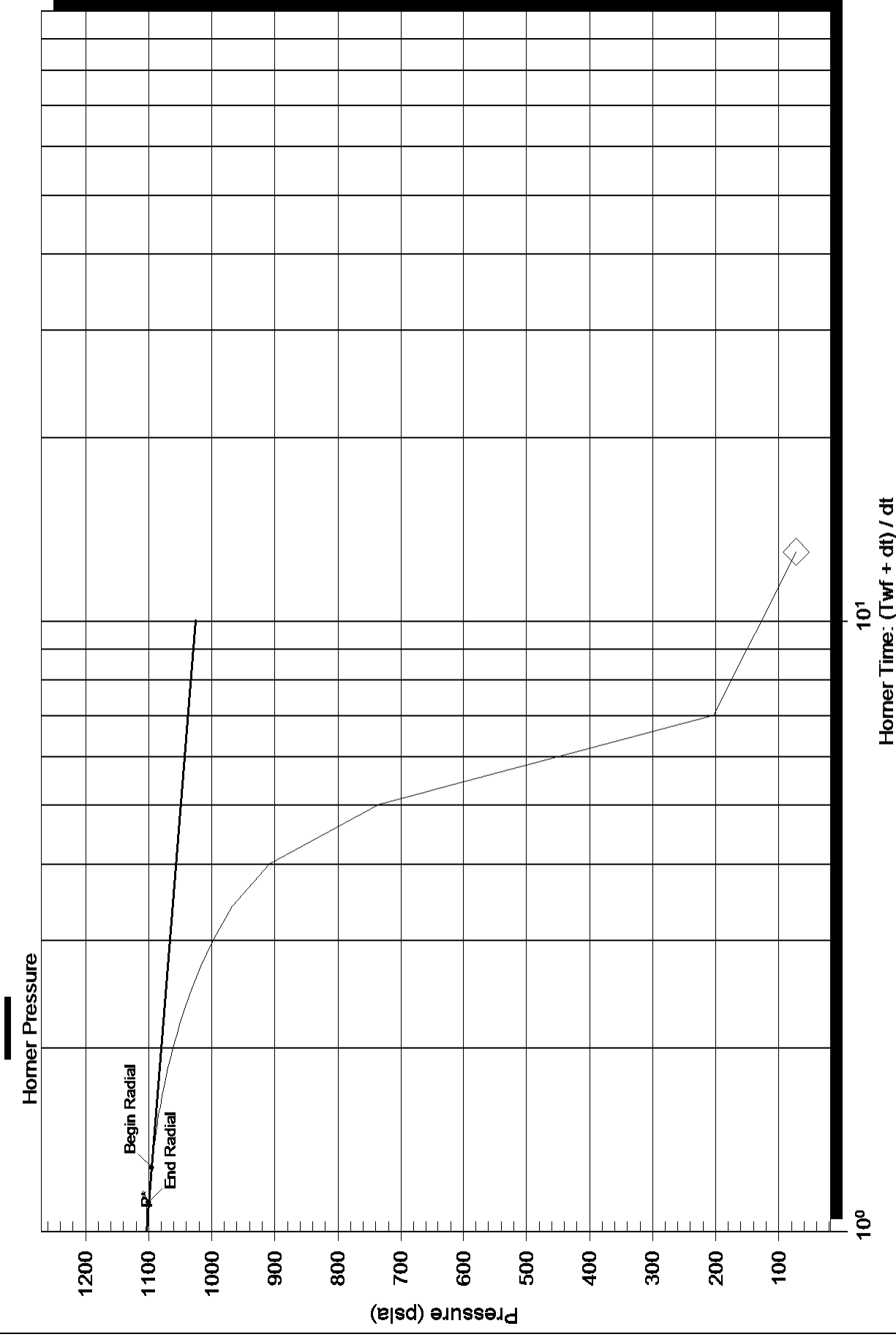
### Pressure vs. Time



### Pressure vs. Time

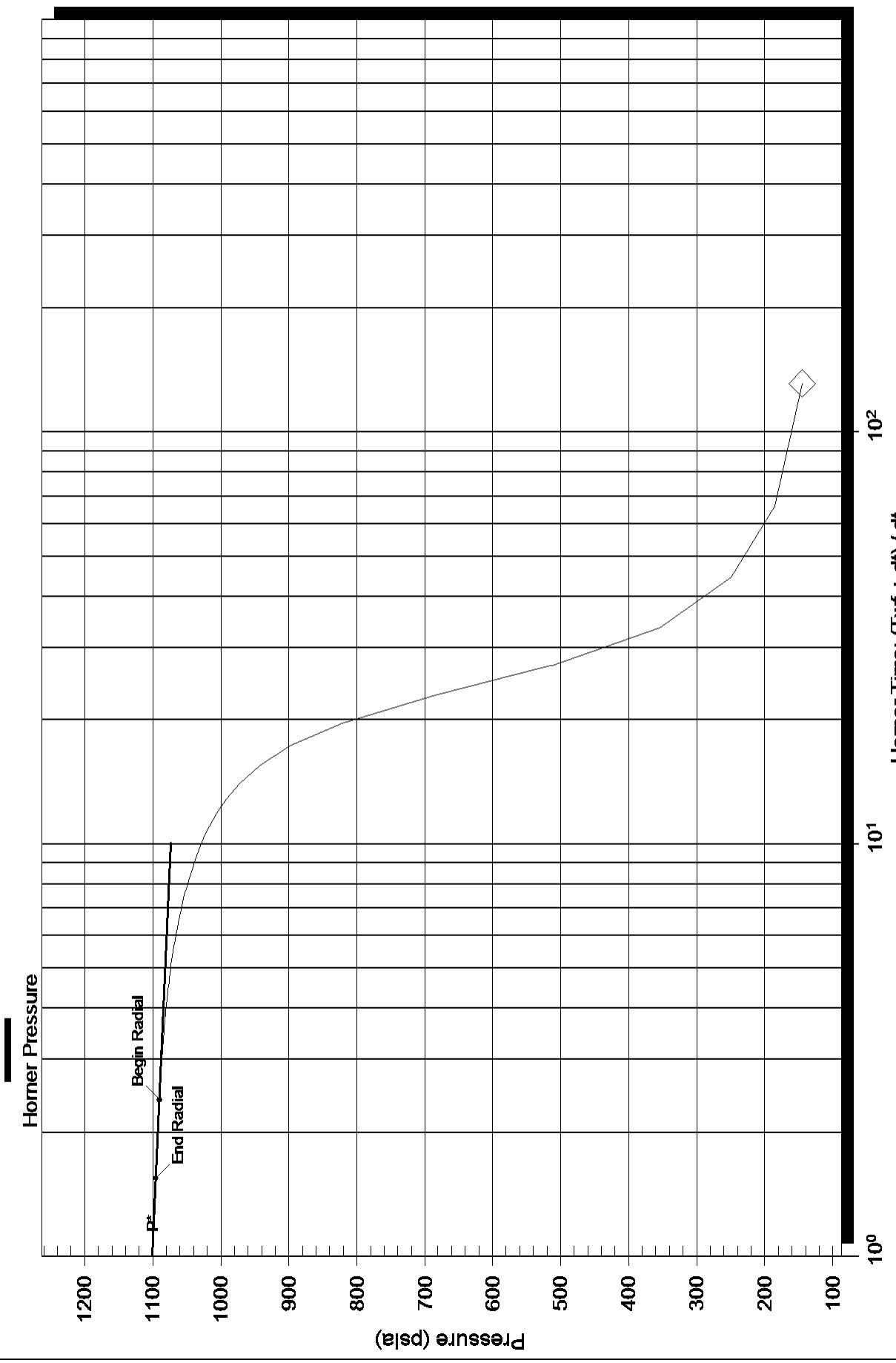


### Horner Plot

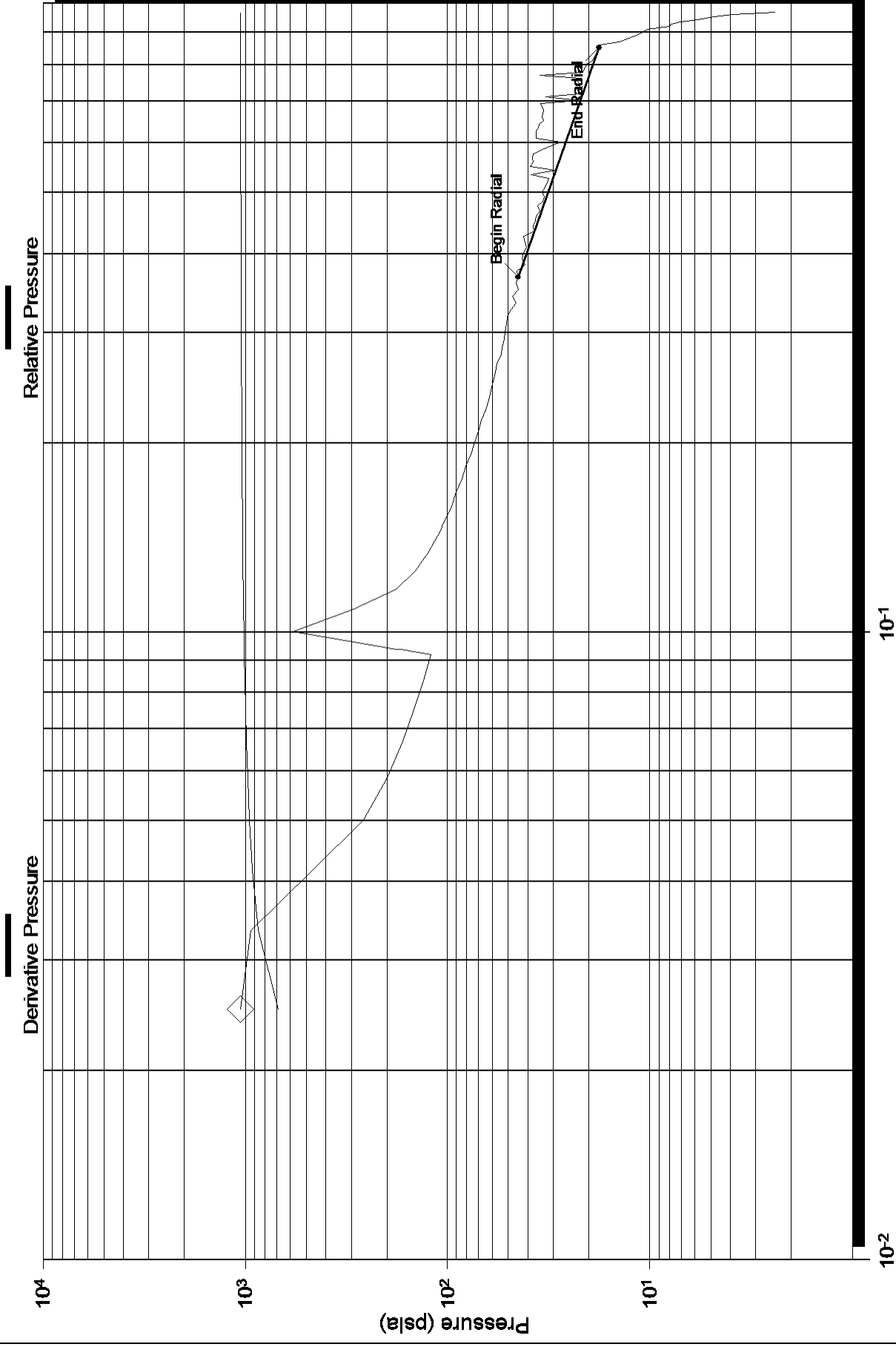




### Horner Plot



# Log-Log and Pseudo-Derivative



# Log-Log and Pseudo-Derivative

