



DRILL STEM TEST REPORT

Prepared For: **SHELBY RESOURCES L.L.C**

1217 CANAL BLVD SUITE C
HAYS KS 67601

ATTN: DEREK PATTERSON

25-21S-16W-PAWNEE

WFY UNIT #1

Start Date: 2010.02.12 @ 20:00:00

End Date: 2010.02.13 @ 03:21:30

Job Ticket #: 15889 DST #: 1

Superior Testers Enterprises LLC
PO Box 138 Great Bend KS 67530
1-800-792-6902

Printed: 2010.02.12 @ 03:19:31

SHELBY RESOURCES L.L.C
WFY UNIT #1
25-21S-16W-PAWNEE
DST # 1
LKG -G-
2010.02.12



DRILL STEM TEST REPORT

SHELBY RESOURCES L.L.C

WFY UNIT #1

1217 CANAL BLVD SUITE C
HAYS KS 67601

25-21S-16W-PAWNEE

ATTN: DEREK PATTERSON

Job Ticket: 15889

DST#: 1

Test Start: 2010.02.12 @ 20:00:00

GENERAL INFORMATION:

Formation: **LKC -G-**
 Deviated: No Whipstock: ft (KB)
 Time Tool Opened: 23:05:30
 Time Test Ended: 03:21:30
 Interval: **3536.00 ft (KB) To 3566.00 ft (KB) (TVD)**
 Total Depth: 3566.00 ft (KB) (TVD)
 Hole Diameter: 7.88 inches Hole Condition: Fair
 Test Type: Conventional Bottom Hole (Initial)
 Tester: DAVID NICHOLS
 Unit No: 3345 63 M GB
 Reference Elevations: 1979.00 ft (KB)
 1971.00 ft (CF)
 KB to GR/CF: 8.00 ft

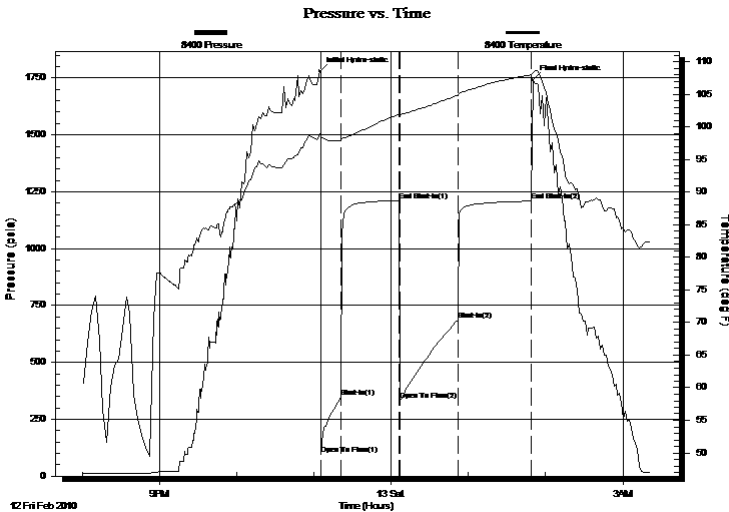
Serial #: 8400

Inside

Press@RunDepth: 685.53 psia @ 3561.00 ft (KB) Capacity: 5000.00 psia
 Start Date: 2010.02.12 End Date: 2010.02.13 Last Calib.: 2010.02.12
 Start Time: 20:00:00 End Time: 03:21:30 Time On Btm: 2010.02.12 @ 23:04:30
 Time Off Btm: 2010.02.13 @ 01:50:00

TEST COMMENT: 15-INITIAL OPENING GOOD BLOW BOTTOM OF THE BUCKET IN 3 MINS
 45-INITIAL SHUT IN WEAK BLOW BACK
 45-FINAL OPENING GOOD BLOW BOTTOM OF THE BUCKET IN 4 MINS
 60-FINAL SHUT IN SURFACE BLOW BACK

PRESSURE SUMMARY



| Time (Min.) | Pressure (psia) | Temp (deg F) | Annotation |
|-------------|-----------------|--------------|----------------------|
| 0 | 1780.05 | 99.02 | Initial Hydro-static |
| 1 | 97.90 | 98.11 | Open To Flow (1) |
| 17 | 348.21 | 97.95 | Shut-In(1) |
| 62 | 1211.78 | 101.91 | End Shut-In(1) |
| 62 | 333.31 | 101.69 | Open To Flow (2) |
| 108 | 685.53 | 104.83 | Shut-In(2) |
| 165 | 1208.85 | 107.97 | End Shut-In(2) |
| 166 | 1741.58 | 108.37 | Final Hydro-static |

Recovery

| Length (ft) | Description | Volume (bbl) |
|-------------|----------------------|--------------|
| 120.00 | GAS IN PIPE 100%G | 0.59 |
| 180.00 | MUDDY WATER 30%M70#W | 1.76 |
| 1160.00 | WATER 100%W | 16.96 |
| 60.00 | WATERY MUD50%M50%W | 0.88 |
| | | |
| | | |

Gas Rates

| | Choke (inches) | Pressure (psia) | Gas Rate (Mcf/d) |
|--|----------------|-----------------|------------------|
| | | | |



DRILL STEM TEST REPORT

SHELBY RESOURCES L.L.C

WFY UNIT #1

1217 CANAL BLVD SUITE C
HAYS KS 67601

25-21S-16W-PAWNEE

ATTN: DEREK PATTERSON

Job Ticket: 15889

DST#: 1

Test Start: 2010.02.12 @ 20:00:00

GENERAL INFORMATION:

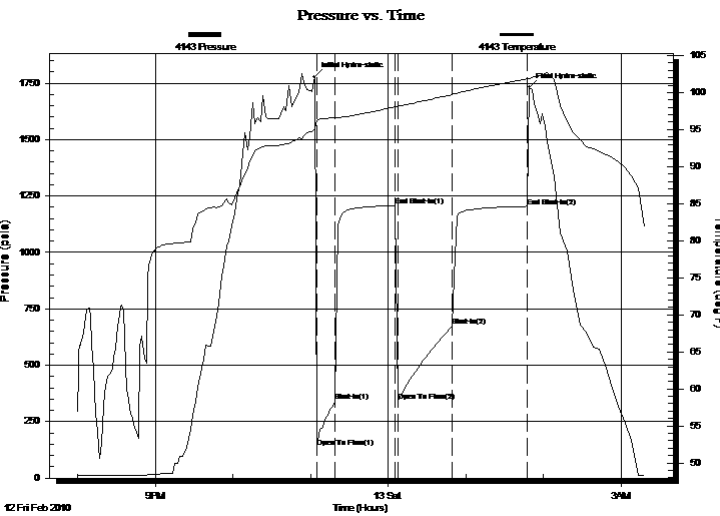
Formation: **LKC -G-**
 Deviated: No Whipstock: ft (KB)
 Time Tool Opened: 23:05:30
 Time Test Ended: 03:21:30
 Interval: **3536.00 ft (KB) To 3566.00 ft (KB) (TVD)**
 Total Depth: 3566.00 ft (KB) (TVD)
 Hole Diameter: 7.88 inches Hole Condition: Fair
 Test Type: Conventional Bottom Hole (Initial)
 Tester: DAVID NICHOLS
 Unit No: 3345 63 M GB
 Reference Elevations: 1979.00 ft (KB)
 1971.00 ft (CF)
 KB to GR/CF: 8.00 ft

Serial #: 4143

Outside

Press@RunDepth: 1204.05 psia @ 3561.00 ft (KB) Capacity: 5000.00 psia
 Start Date: 2010.02.12 End Date: 2010.02.13 Last Calib.: 2010.02.12
 Start Time: 20:00:00 End Time: 03:18:10 Time On Btm: 2010.02.12 @ 23:03:10
 Time Off Btm: 2010.02.13 @ 01:49:10

TEST COMMENT: 15-INITIAL OPENING GOOD BLOW BOTTOM OF THE BUCKET IN 3 MINS
 45-INITIAL SHUT IN WEAK BLOW BACK
 45-FINAL OPENING GOOD BLOW BOTTOM OF THE BUCKET IN 4 MINS
 60-FINAL SHUT IN SURFACE BLOW BACK



PRESSURE SUMMARY

| Time (Min.) | Pressure (psia) | Temp (deg F) | Annotation |
|-------------|-----------------|--------------|----------------------|
| 0 | 1778.57 | 95.14 | Initial Hydro-static |
| 2 | 134.97 | 96.25 | Open To Flow (1) |
| 16 | 339.75 | 96.58 | Shut-In(1) |
| 62 | 1207.21 | 98.06 | End Shut-In(1) |
| 64 | 341.78 | 98.14 | Open To Flow (2) |
| 106 | 673.28 | 99.71 | Shut-In(2) |
| 164 | 1204.05 | 101.82 | End Shut-In(2) |
| 166 | 1731.86 | 101.90 | Final Hydro-static |

Recovery

| Length (ft) | Description | Volume (bbl) |
|-------------|----------------------|--------------|
| 120.00 | GAS IN PIPE 100%G | 0.59 |
| 180.00 | MUDDY WATER 30%M70#W | 1.76 |
| 1160.00 | WATER 100%W | 16.96 |
| 60.00 | WATERY MUD50%M50%W | 0.88 |
| | | |
| | | |

Gas Rates

| | Choke (inches) | Pressure (psia) | Gas Rate (Mcf/d) |
|--|----------------|-----------------|------------------|
| | | | |



DRILL STEM TEST REPORT

TOOL DIAGRAM

SHELBY RESOURCES L.L.C

WFY UNIT #1

1217 CANAL BLVD SUITE C
HAYS KS 67601

25-21S-16W-PAWNEE

Job Ticket: 15889

DST#: 1

ATTN: DEREK PATTERSON

Test Start: 2010.02.12 @ 20:00:00

Tool Information

| | | | | | |
|---------------------------|--------------------|-----------------------|--------------------------------|------------------------|-------------|
| Drill Pipe: | Length: 3300.00 ft | Diameter: 3.88 inches | Volume: 48.26 bbl | Tool Weight: | 2000.00 lb |
| Heavy Wt. Pipe: | Length: 0.00 ft | Diameter: 0.00 inches | Volume: 0.00 bbl | Weight set on Packer: | 20000.00 lb |
| Drill Collar: | Length: 210.00 ft | Diameter: 2.25 inches | Volume: 1.03 bbl | Weight to Pull Loose: | 80.00 lb |
| | | | <u>Total Volume: 49.29 bbl</u> | Tool Chased | 0.00 ft |
| Drill Pipe Above KB: | 3.00 ft | | | String Weight: Initial | 64000.00 lb |
| Depth to Top Packer: | 3536.00 ft | | | Final | 70000.00 lb |
| Depth to Bottom Packer: | ft | | | | |
| Interval between Packers: | 30.00 ft | | | | |
| Tool Length: | 59.00 ft | | | | |
| Number of Packers: | 2 | Diameter: | 6.75 inches | | |
| Tool Comments: | | | | | |

| Tool Description | Length (ft) | Serial No. | Position | Depth (ft) | Accum. Lengths |
|------------------|-------------|------------|----------|------------|----------------|
|------------------|-------------|------------|----------|------------|----------------|

| | | | | | |
|-----------------|-------|------|---------|---------|-------------------------------|
| Change Over Sub | 1.00 | | | 3508.00 | |
| Shut-In Tool | 5.00 | | | 3513.00 | |
| Hydroic Tool | 5.00 | | | 3518.00 | |
| Jars | 6.00 | | | 3524.00 | |
| Safety Joint | 2.00 | | | 3526.00 | |
| Packer | 5.00 | | | 3531.00 | 29.00 Bottom Of Top Packer |
| Packer | 5.00 | | | 3536.00 | |
| Perforations | 25.00 | | | 3561.00 | |
| Recorder | 0.00 | 8400 | Inside | 3561.00 | |
| Recorder | 0.00 | 4143 | Outside | 3561.00 | |
| Bullnose | 5.00 | | | 3566.00 | 30.00 Bottom Packers & Anchor |

Total Tool Length: 59.00



DRILL STEM TEST REPORT

FLUID SUMMARY

SHELBY RESOURCES L.L.C

WFY UNIT #1

1217 CANAL BLVD SUITE C
HAYS KS 67601

25-21S-16W-PAWNEE

Job Ticket: 15889

DST#: 1

ATTN: DEREK PATTERSON

Test Start: 2010.02.12 @ 20:00:00

Mud and Cushion Information

Mud Type: Gel Chem
Mud Weight: 9.00 lb/gal
Viscosity: 48.00 sec/qt
Water Loss: 14.20 in³
Resistivity: ohm.m
Salinity: 12000.00 ppm
Filter Cake: inches

Cushion Type:
Cushion Length: ft
Cushion Volume: bbl
Gas Cushion Type:
Gas Cushion Pressure: psia

Oil API: deg API
Water Salinity: ppm

Recovery Information

Recovery Table

| Length ft | Description | Volume bbl |
|--------------|----------------------|---------------|
| 120.00 | GAS IN PIPE 100%G | 0.590 |
| 180.00 | MUDDY WATER 30%M70#W | 1.759 |
| 1160.00 | WATER 100%W | 16.964 |
| 60.00 | WATERY MUD50%M50%W | 0.877 |

Total Length: 1520.00 ft Total Volume: 20.190 bbl

Num Fluid Samples: 0

Num Gas Bombs: 0

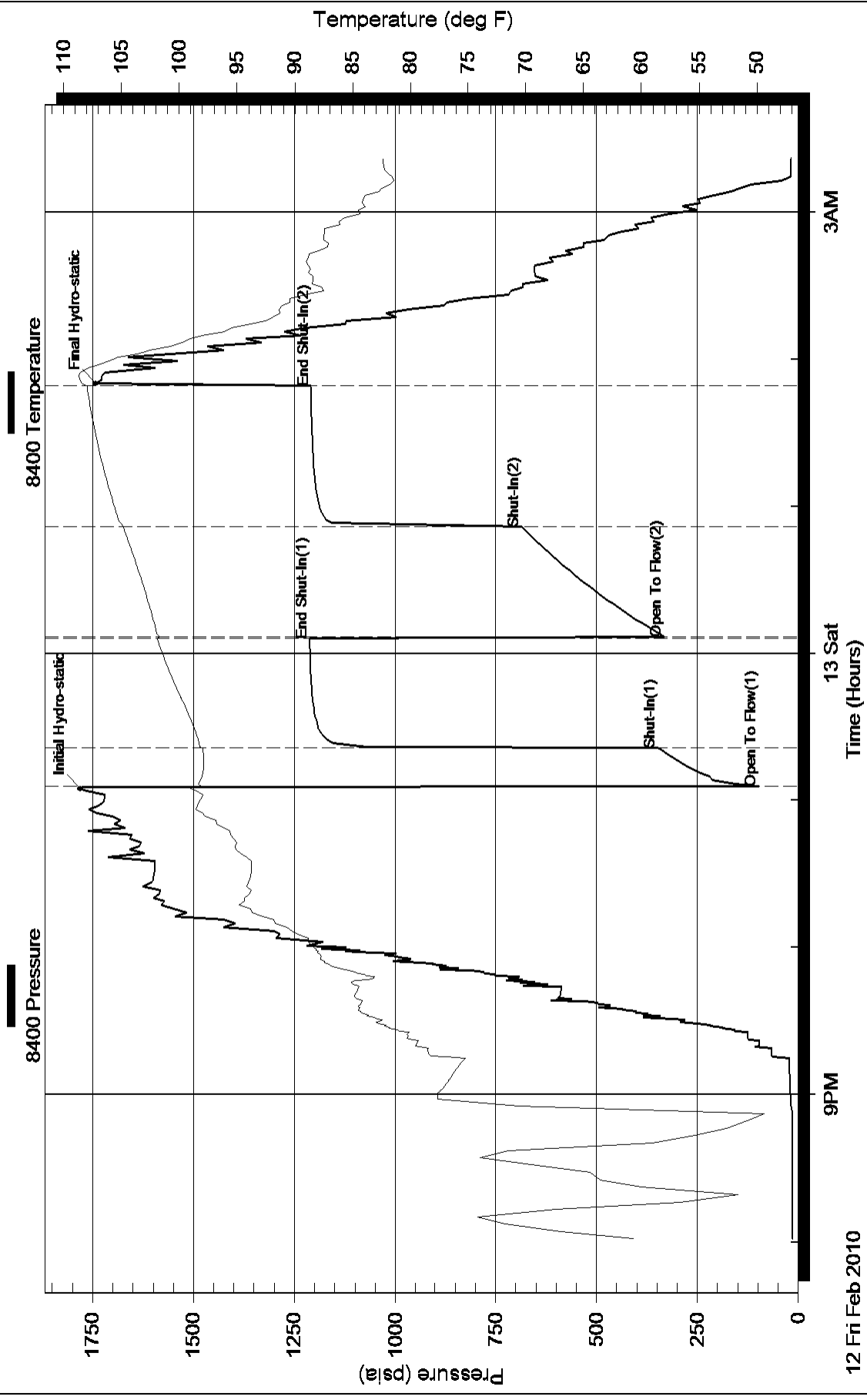
Serial #:

Laboratory Name:

Laboratory Location:

Recovery Comments:

Pressure vs. Time



Pressure vs. Time

