



DRILL STEM TEST REPORT

Prepared For: **SHELBY RESOURCES L.L.C**

1217 CANAL BLVD SUITE C
HAYS KS 67601

ATTN: DEREK PATTERSON

25-21S-16W-PAWNEE

WFY UNIT #1

Start Date: 2010.02.14 @ 01:00:00

End Date: 2010.02.14 @ 06:05:00

Job Ticket #: 15891 DST #: 3

Superior Testers Enterprises LLC
PO Box 138 Great Bend KS 67530
1-800-792-6902

Printed: 2010.02.14 @ 06:11:20

SHELBY RESOURCES L.L.C
WFY UNIT #1
25-21S-16W-PAWNEE
DST # 3
ARBUCKLE
2010.02.14



DRILL STEM TEST REPORT

SHELBY RESOURCES L.L.C

WFY UNIT #1

1217 CANAL BLVD SUITE C
HAYS KS 67601

25-21S-16W-PAWNEE

Job Ticket: 15891

DST#: 3

ATTN: DEREK PATTERSON

Test Start: 2010.02.14 @ 01:00:00

GENERAL INFORMATION:

Formation: **ARBUCKLE**

Deviated: No Whipstock: ft (KB)

Time Tool Opened: 02:29:20

Time Test Ended: 06:05:00

Test Type: Conventional Bottom Hole (Initial)

Tester: DAVID NICHOLS

Unit No: 3345 63 M GB

Interval: 3845.00 ft (KB) To 3852.00 ft (KB) (TVD)

Reference Elevations: 1979.00 ft (KB)

Total Depth: 3852.00 ft (KB) (TVD)

1971.00 ft (CF)

Hole Diameter: 7.88 inches Hole Condition: Fair

KB to GR/CF: 8.00 ft

Serial #: 8400

Inside

Press@RunDepth: 910.80 psia @ 3847.00 ft (KB)

Capacity: 5000.00 psia

Start Date: 2010.02.14

End Date:

2010.02.14

Last Calib.:

2010.02.14

Start Time: 01:00:00

End Time:

06:05:00

Time On Btm:

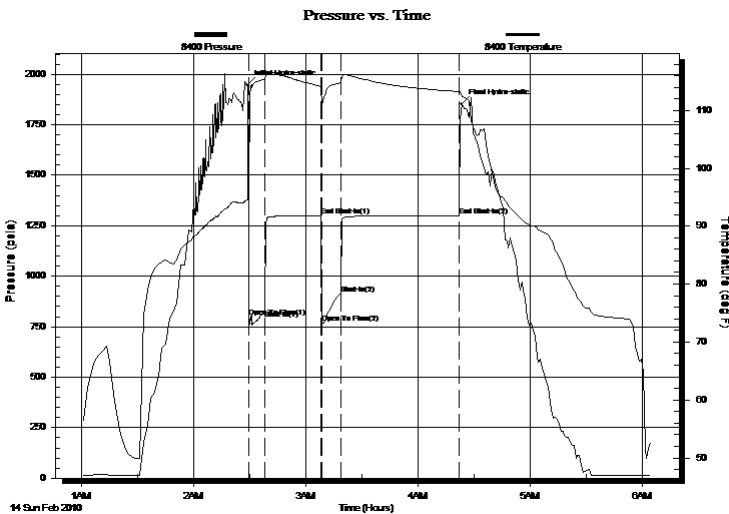
2010.02.14 @ 02:28:50

Time Off Btm:

2010.02.14 @ 04:23:30

TEST COMMENT: 10-INITIAL OPENING STRONG BLOW BOTTOM OF THE BUCKET IN 10 SEC
30-INITIAL SHUT IN WEAK BLOW BACK
15-FINAL OPENING STRONG BLOW BOTTOM OF THE BUCKET IN 20 SEC
60-FINAL SHUT IN LEFT OPEN TO BLEED OF H2S GAS

PRESSURE SUMMARY



Time (Min.)	Pressure (psia)	Temp (deg F)	Annotation
0	1948.55	94.63	Initial Hydro-static
1	799.39	96.87	Open To Flow (1)
10	830.74	115.43	Shut-In(1)
40	1298.50	114.11	End Shut-In(1)
40	769.69	110.87	Open To Flow (2)
50	910.80	114.72	Shut-In(2)
114	1298.51	113.25	End Shut-In(2)
115	1853.03	112.33	Final Hydro-static

Recovery

Length (ft)	Description	Volume (bbl)
70.00	MUDDY WATER 40%M60%W	0.34
360.00	WATER 100	3.77

Gas Rates

	Choke (inches)	Pressure (psia)	Gas Rate (Mcf/d)
First Gas Rate	1.00	68.00	1954.92
Last Gas Rate	1.00	68.00	1954.92



DRILL STEM TEST REPORT

SHELBY RESOURCES L.L.C

WFY UNIT #1

1217 CANAL BLVD SUITE C
HAYS KS 67601

25-21S-16W-PAWNEE

ATTN: DEREK PATTERSON

Job Ticket: 15891

DST#: 3

Test Start: 2010.02.14 @ 01:00:00

GENERAL INFORMATION:

Formation: **ARBUCKLE**

Deviated: No Whipstock: ft (KB)

Time Tool Opened: 02:29:20

Time Test Ended: 06:05:00

Test Type: Conventional Bottom Hole (Initial)

Tester: DAVID NICHOLS

Unit No: 3345 63 M GB

Interval: 3845.00 ft (KB) To 3852.00 ft (KB) (TVD)

Reference Elevations: 1979.00 ft (KB)

Total Depth: 3852.00 ft (KB) (TVD)

1971.00 ft (CF)

Hole Diameter: 7.88 inches Hole Condition: Fair

KB to GR/CF: 8.00 ft

Serial #: 4143 Outside

Press@RunDepth: 1294.11 psia @ 3847.00 ft (KB)

Capacity: 5000.00 psia

Start Date: 2010.02.14

End Date: 2010.02.14

Last Calib.: 2010.02.14

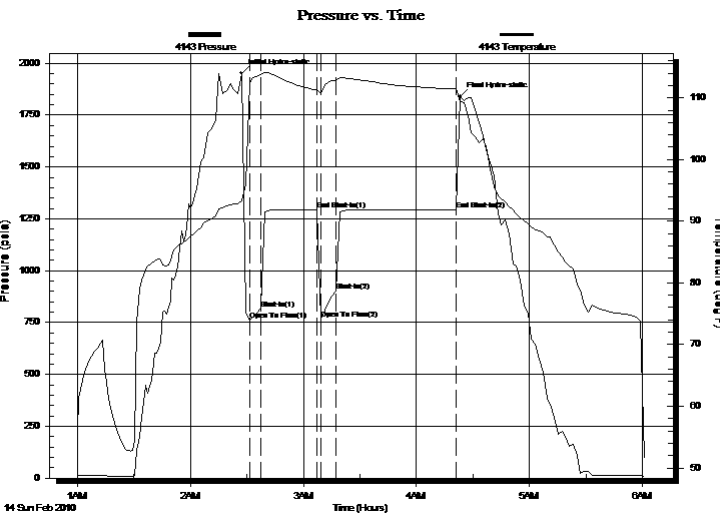
Start Time: 01:00:00

End Time: 06:01:09

Time On Btm: 2010.02.14 @ 02:27:10

Time Off Btm: 2010.02.14 @ 04:23:10

TEST COMMENT: 10-INITIAL OPENING STRONG BLOW BOTTOM OF THE BUCKET IN 10 SEC
30-INITIAL SHUT IN WEAK BLOW BACK
15-FINAL OPENING STRONG BLOW BOTTOM OF THE BUCKET IN 20 SEC
60-FINAL SHUT IN LEFT OPEN TO BLEED OF H2S GAS



PRESSURE SUMMARY

Time (Min.)	Pressure (psia)	Temp (deg F)	Annotation
0	1951.87	93.38	Initial Hydro-static
4	759.75	112.53	Open To Flow (1)
10	817.75	113.71	Shut-In(1)
40	1294.39	111.28	End Shut-In(1)
42	768.69	110.62	Open To Flow (2)
50	901.76	112.88	Shut-In(2)
114	1294.11	111.45	End Shut-In(2)
116	1839.19	109.44	Final Hydro-static

Recovery

Length (ft)	Description	Volume (bbl)
70.00	MUDDY WATER 40%M60%W	0.34
360.00	WATER 100	3.77

Gas Rates

	Choke (inches)	Pressure (psia)	Gas Rate (Mcf/d)
First Gas Rate	1.00	68.00	1954.92
Last Gas Rate	1.00	68.00	1954.92



DRILL STEM TEST REPORT

TOOL DIAGRAM

SHELBY RESOURCES L.L.C

WFY UNIT #1

1217 CANAL BLVD SUITE C
HAYS KS 67601

25-21S-16W-PAWNEE

Job Ticket: 15891

DST#: 3

ATTN: DEREK PATTERSON

Test Start: 2010.02.14 @ 01:00:00

Tool Information

Drill Pipe:	Length: 3612.00 ft	Diameter: 3.80 inches	Volume: 50.67 bbl	Tool Weight: 2000.00 lb
Heavy Wt. Pipe:	Length: ft	Diameter: 0.00 inches	Volume: 0.00 bbl	Weight set on Packer: 20000.00 lb
Drill Collar:	Length: 210.00 ft	Diameter: 2.25 inches	Volume: 1.03 bbl	Weight to Pull Loose: 80000.00 lb
			<u>Total Volume: 51.70 bbl</u>	Tool Chased 0.00 ft
Drill Pipe Above KB:	1.00 ft			String Weight: Initial 67000.00 lb
Depth to Top Packer:	3845.00 ft			Final 68000.00 lb
Depth to Bottom Packer:	ft			
Interval between Packers:	7.00 ft			
Tool Length:	31.00 ft			
Number of Packers:	2	Diameter: 6.75 inches		

Tool Comments:

Tool Description	Length (ft)	Serial No.	Position	Depth (ft)	Accum. Lengths
Change Over Sub	1.00			3822.00	
Shut-In Tool	5.00			3827.00	
Hydroic Tool	5.00			3832.00	
Jars	6.00			3838.00	
Safety Joint	2.00			3840.00	
Packer	5.00			3845.00	24.00 Bottom Of Top Packer
Perforations	2.00			3847.00	
Recorder	0.00	8400	Inside	3847.00	
Recorder	0.00	4143	Outside	3847.00	
Bullnose	5.00			3852.00	7.00 Anchor Tool
Total Tool Length:	31.00				



DRILL STEM TEST REPORT

FLUID SUMMARY

SHELBY RESOURCES L.L.C

WFY UNIT #1

1217 CANAL BLVD SUITE C
HAYS KS 67601

25-21S-16W-PAWNEE

Job Ticket: 15891

DST#: 3

ATTN: DEREK PATTERSON

Test Start: 2010.02.14 @ 01:00:00

Mud and Cushion Information

Mud Type: Gel Chem

Mud Weight: 9.00 lb/gal

Viscosity: 57.00 sec/qt

Water Loss: 13.40 in³

Resistivity: ohm.m

Salinity: 16500.00 ppm

Filter Cake: inches

Cushion Type:

Cushion Length: ft

Cushion Volume: bbl

Gas Cushion Type:

Gas Cushion Pressure: psia

Oil API:

Water Salinity: deg API

ppm

Recovery Information

Recovery Table

Length ft	Description	Volume bbl
70.00	MUDDY WATER 40%M60%W	0.344
360.00	WATER 100	3.775

Total Length: 430.00 ft Total Volume: 4.119 bbl

Num Fluid Samples: 0

Num Gas Bombs: 0

Serial #:

Laboratory Name:

Laboratory Location:

Recovery Comments:



DRILL STEM TEST REPORT

GAS RATES

SHELBY RESOURCES L.L.C

WFY UNIT #1

1217 CANAL BLVD SUITE C
HAYS KS 67601

25-21S-16W-PAWNEE

Job Ticket: 15891

DST#: 3

ATTN: DEREK PATTERSON

Test Start: 2010.02.14 @ 01:00:00

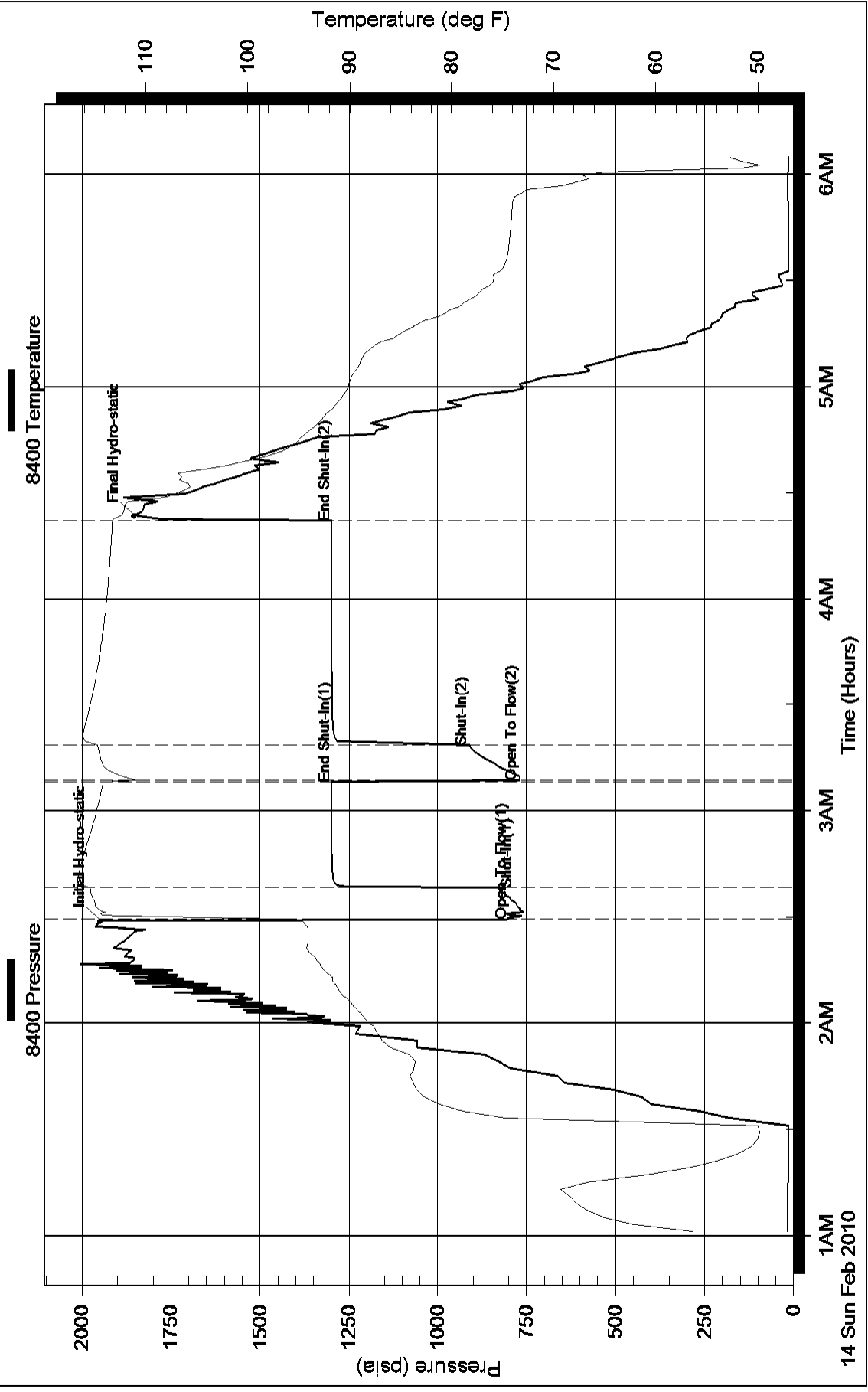
Gas Rates Information

Temperature: 59 (deg F)
Relative Density: 0.65
Z Factor: 0.8

Gas Rates Table

Flow Period	Elapsed Time	Choke (inches)	Pressure (psia)	Gas Rate (Mcf/d)
1	10	1.00	68.00	1954.92
2	8	1.00	68.00	1954.92

Pressure vs. Time



Pressure vs. Time

