



DRILL STEM TEST REPORT

Prepared For: **NOBLE PETROLEUM INC**

3101 N ROCK RD STE 125 WICHITA KS
67226+3100

ATTN:

17-28-4 BUTLER

JONES #2

Start Date: 2011.05.22 @ 11:05:00

End Date: 2011.05.22 @ 16:55:30

Job Ticket #: 15809 DST #: 2

Superior Testers Enterprises LLC
PO Box 138 Great Bend KS 67530
1-800-792-6902

Printed: 2011.05.22 @ 17:05:34

NOBLE PETROLEUM INC
JONES #2
17-28-4 BUTLER
DST # 2
LOWER LANSING
2011.05.22



DRILL STEM TEST REPORT

TOOL DIAGRAM

NOBLE PETROLEUM INC
 3101 N ROCK RD STE 125 WICHITA KS
 67226+3100
 ATTN:

JONES #2
17-28-4 BUTLER
 Job Ticket: 15809 **DST#: 2**
 Test Start: 2011.05.22 @ 11:05:00

Tool Information

Drill Pipe:	Length: 1861.00 ft	Diameter: 3.80 inches	Volume: 26.10 bbl	Tool Weight: 1000.00 lb
Heavy Wt. Pipe:	Length: 0.00 ft	Diameter: 0.00 inches	Volume: 0.00 bbl	Weight set on Packer: 20000.00 lb
Drill Collar:	Length: 180.00 ft	Diameter: 2.25 inches	Volume: 0.89 bbl	Weight to Pull Loose: 60000.00 lb
			<u>Total Volume: 26.99 bbl</u>	Tool Chased 0.00 ft
Drill Pipe Above KB:	7.00 ft			String Weight: Initial 35000.00 lb
Depth to Top Packer:	2063.00 ft			Final 35000.00 lb
Depth to Bottom Packer:	ft			
Interval between Packers:	11.00 ft			
Tool Length:	40.00 ft			
Number of Packers:	2	Diameter: 6.75 inches		

Tool Comments:

Tool Description	Length (ft)	Serial No.	Position	Depth (ft)	Accum. Lengths
Change Over Sub	1.00			2035.00	
Shut-In Tool	5.00			2040.00	
Hydroic Tool	5.00			2045.00	
Jars	6.00			2051.00	
Safety Joint	2.00			2053.00	
Packer	5.00			2058.00	29.00 Bottom Of Top Packer
Packer	5.00			2063.00	
Perforations	6.00			2069.00	
Recorder	1.00	6663	Inside	2070.00	
Recorder	1.00	6666	Outside	2071.00	
Bullnose	3.00			2074.00	11.00 Bottom Packers & Anchor

Total Tool Length: 40.00



DRILL STEM TEST REPORT

FLUID SUMMARY

NOBLE PETROLEUM INC
3101 N ROCK RD STE 125 WICHITA KS
67226+3100
ATTN:

JONES #2
17-28-4 BUTLER
Job Ticket: 15809 **DST#: 2**
Test Start: 2011.05.22 @ 11:05:00

Mud and Cushion Information

Mud Type:	Gel Chem	Cushion Type:		Oil API:	deg API
Mud Weight:	9.00 lb/gal	Cushion Length:	ft	Water Salinity:	ppm
Viscosity:	47.00 sec/qt	Cushion Volume:	bbbl		
Water Loss:	8.00 in ³	Gas Cushion Type:			
Resistivity:	ohm.m	Gas Cushion Pressure:	psia		
Salinity:	200.00 ppm				
Filter Cake:	1.00 inches				

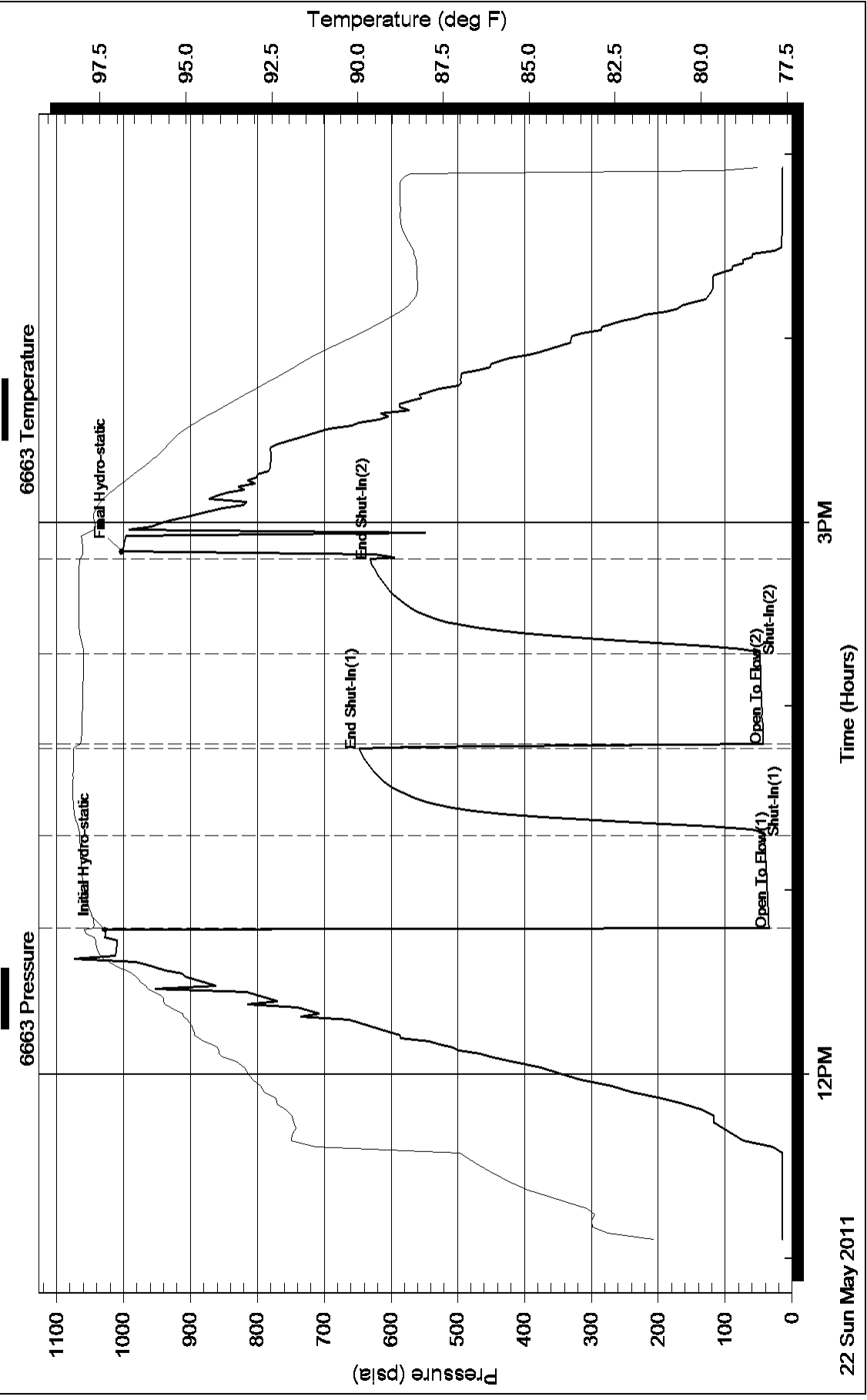
Recovery Information

Recovery Table

Length ft	Description	Volume bbl
30.00	MUD	0.148

Total Length: 30.00 ft Total Volume: 0.148 bbl
Num Fluid Samples: 0 Num Gas Bombs: 0 Serial #:
Laboratory Name: Laboratory Location:
Recovery Comments:

Pressure vs. Time



22 Sun May 2011

12PM

3PM

Time (Hours)

Pressure vs. Time

