



DRILL STEM TEST REPORT

Prepared For: **NOBLE PETROLEUM INC**

3101 N ROCK RD STE 125 WICHITA KS
67226+3100

ATTN:

17-28-4 BUTLER

JONES #2

Start Date: 2011.05.24 @ 11:10:00

End Date: 2011.05.24 @ 18:19:00

Job Ticket #: 15811 DST #: 4

Superior Testers Enterprises LLC
PO Box 138 Great Bend KS 67530
1-800-792-6902

Printed: 2011.05.24 @ 18:33:27

NOBLE PETROLEUM INC
JONES #2
17-28-4 BUTLER
DST # 4
ARBUCKLE TEST
2011.05.24



DRILL STEM TEST REPORT

TOOL DIAGRAM

NOBLE PETROLEUM INC
 3101 N ROCK RD STE 125 WICHITA KS
 67226+3100
 ATTN:

JONES #2
17-28-4 BUTLER
 Job Ticket: 15811 **DST#: 4**
 Test Start: 2011.05.24 @ 11:10:00

Tool Information

Drill Pipe:	Length: 2265.00 ft	Diameter: 3.80 inches	Volume: 31.77 bbl	Tool Weight:	1000.00 lb
Heavy Wt. Pipe:	Length: 0.00 ft	Diameter: 0.00 inches	Volume: 0.00 bbl	Weight set on Packer:	1000.00 lb
Drill Collar:	Length: 180.00 ft	Diameter: 2.25 inches	Volume: 0.89 bbl	Weight to Pull Loose:	5500.00 lb
			<u>Total Volume: 32.66 bbl</u>	Tool Chased	0.00 ft
Drill Pipe Above KB:	6.00 ft			String Weight: Initial	39000.00 lb
Depth to Top Packer:	2468.00 ft			Final	39000.00 lb
Depth to Bottom Packer:	ft				
Interval between Packers:	14.00 ft				
Tool Length:	43.00 ft				
Number of Packers:	2	Diameter: 6.75 inches			

Tool Comments:

Tool Description	Length (ft)	Serial No.	Position	Depth (ft)	Accum. Lengths
Change Over Sub	1.00			2440.00	
Shut-In Tool	5.00			2445.00	
Hydroic Tool	5.00			2450.00	
Jars	6.00			2456.00	
Safety Joint	2.00			2458.00	
Packer	5.00			2463.00	29.00 Bottom Of Top Packer
Packer	5.00			2468.00	
Perforations	9.00			2477.00	
Recorder	1.00	6663	Inside	2478.00	
Recorder	1.00	6666	Outside	2479.00	
Bullnose	3.00			2482.00	14.00 Bottom Packers & Anchor

Total Tool Length: 43.00



DRILL STEM TEST REPORT

FLUID SUMMARY

NOBLE PETROLEUM INC
 3101 N ROCK RD STE 125 WICHITA KS
 67226+3100
 ATTN:

JONES #2
17-28-4 BUTLER
 Job Ticket: 15811 **DST#: 4**
 Test Start: 2011.05.24 @ 11:10:00

Mud and Cushion Information

Mud Type: Gel Chem	Cushion Type:	Oil API: 42 deg API
Mud Weight: 9.00 lb/gal	Cushion Length: ft	Water Salinity: ppm
Viscosity: 45.00 sec/qt	Cushion Volume: bbl	
Water Loss: 9.20 in ³	Gas Cushion Type:	
Resistivity: ohm.m	Gas Cushion Pressure: psia	
Salinity: 2000.00 ppm		
Filter Cake: 1.00 inches		

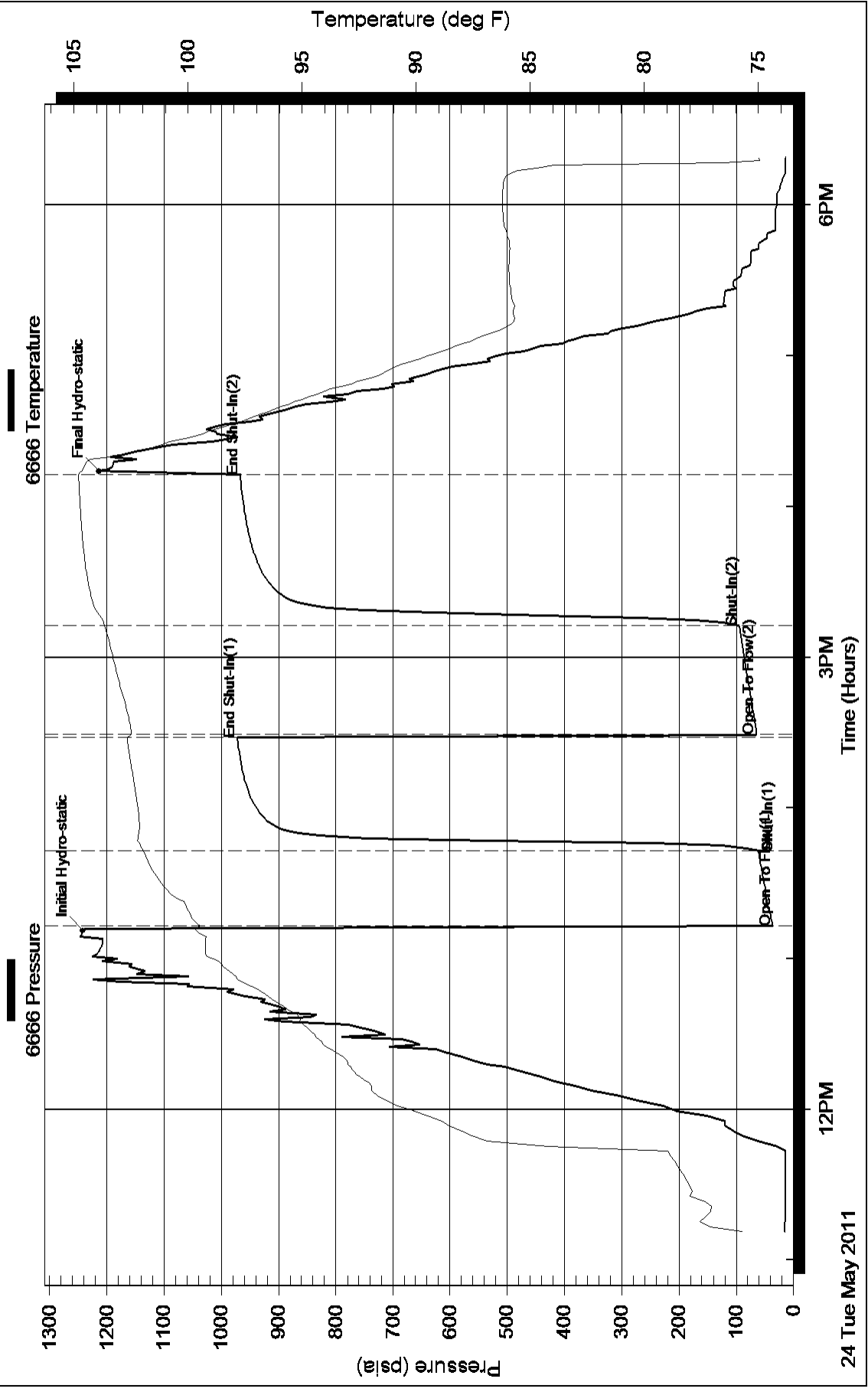
Recovery Information

Recovery Table

Length ft	Description	Volume bbl
60.00	SLIGHTLEY OIL CUT MUD 10%OIL 90%MUD	0.295
90.00	CLEAN OIL 100%OIL	0.443
0.00	GRAVITY OIL 42	0.000

Total Length: 150.00 ft Total Volume: 0.738 bbl
 Num Fluid Samples: 0 Num Gas Bombs: 0 Serial #:
 Laboratory Name: Laboratory Location:
 Recovery Comments: GRAVITY OIL 42

Pressure vs. Time



Pressure vs. Time

