



TRILOBITE TESTING, INC

DRILL STEM TEST REPORT

Murfin Drilling Company
 250 N Water STE Site 300
 Wichita, KS 67202
 ATTN: Robert Hendrix

Lundgren #1-36
S 36-14-30
 Job Ticket: 43128 **DST#: 1**
 Test Start: 2011.05.17 @ 16:10:00

GENERAL INFORMATION:

Formation: **Toronto, Lansing, A-**
 Deviated: No Whipstock: ft (KB)
 Time Tool Opened: 18:12:10
 Time Test Ended: 00:45:10
 Interval: **3690.00 ft (KB) To 3775.00 ft (KB) (TVD)**
 Total Depth: 3775.00 ft (KB) (TVD)
 Hole Diameter: 7.88 inches Hole Condition: Good
 Test Type: Conventional Bottom Hole
 Tester: Chuck Smith - Jace M
 Unit No: 37
 Reference Elevations: 2692.00 ft (KB)
 2687.00 ft (CF)
 KB to GR/CF: 5.00 ft

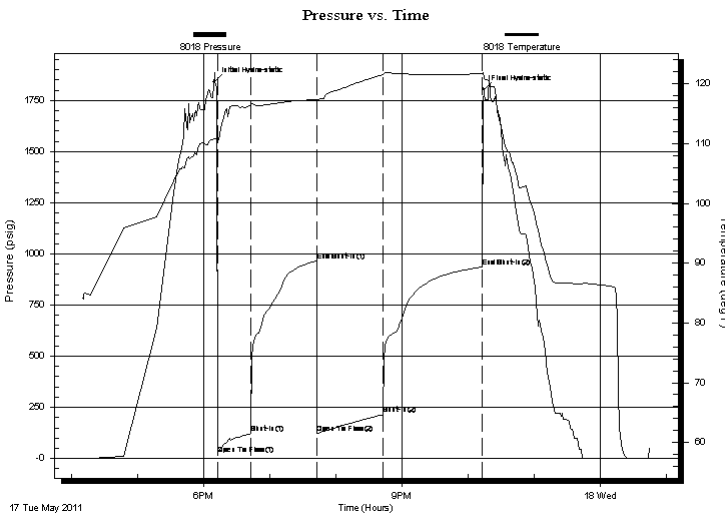
Serial #: 8018

Inside

Press @ Run Depth: 215.01 psig @ 3693.00 ft (KB) Capacity: 8000.00 psig
 Start Date: 2011.05.17 End Date: 2011.05.18 Last Calib.: 2011.05.18
 Start Time: 16:10:05 End Time: 00:45:10 Time On Btm: 2011.05.17 @ 18:09:50
 Time Off Btm: 2011.05.17 @ 22:14:09

TEST COMMENT: IF: B.O.B. @ 23 min.
 IS: No Return
 FF: B.O.B @ 26 min.
 FIS: No Return

PRESSURE SUMMARY



| Time (Min.) | Pressure (psig) | Temp (deg F) | Annotation |
|-------------|-----------------|--------------|----------------------|
| 0 | 1839.98 | 110.75 | Initial Hydro-static |
| 3 | 21.41 | 110.09 | Open To Flow (1) |
| 33 | 121.21 | 116.50 | Shut-In(1) |
| 93 | 966.14 | 117.40 | End Shut-In(1) |
| 93 | 122.87 | 117.16 | Open To Flow (2) |
| 153 | 215.01 | 121.57 | Shut-In(2) |
| 243 | 936.70 | 121.68 | End Shut-In(2) |
| 245 | 1804.70 | 121.18 | Final Hydro-static |

Recovery

| Length (ft) | Description | Volume (bbl) |
|-------------|--------------------------------------|--------------|
| 0.00 | API: .255 @ 64 Degrees F = 29000 PPM | 0.00 |
| 60.00 | OSMW 35% m 65% w | 0.30 |
| 246.00 | OSMW 15% m 85% w | 2.90 |
| 109.00 | OSWM 30% w 70% m | 1.53 |
| 15.00 | 100% o | 0.21 |

Gas Rates

| Choke (inches) | Pressure (psig) | Gas Rate (Mcf/d) |
|----------------|-----------------|------------------|
| | | |



**TRILOBITE
TESTING, INC**

DRILL STEM TEST REPORT

FLUID SUMMARY

Murfin Drilling Company
250 N Water STE Site 300
Wichita, KS 67202
ATTN: Robert Hendrix

Lundgren #1-36
S 36-14-30
Job Ticket: 43128 **DST#: 1**
Test Start: 2011.05.17 @ 16:10:00

Mud and Cushion Information

| | | |
|----------------------------------|----------------------------|---------------------------|
| Mud Type: Gel Chem | Cushion Type: | Oil API: 33 deg API |
| Mud Weight: 9.00 lb/gal | Cushion Length: ft | Water Salinity: 29000 ppm |
| Viscosity: 53.00 sec/qt | Cushion Volume: bbl | |
| Water Loss: 7.98 in ³ | Gas Cushion Type: | |
| Resistivity: 0.00 ohm.m | Gas Cushion Pressure: psig | |
| Salinity: 2000.00 ppm | | |
| Filter Cake: 2.00 inches | | |

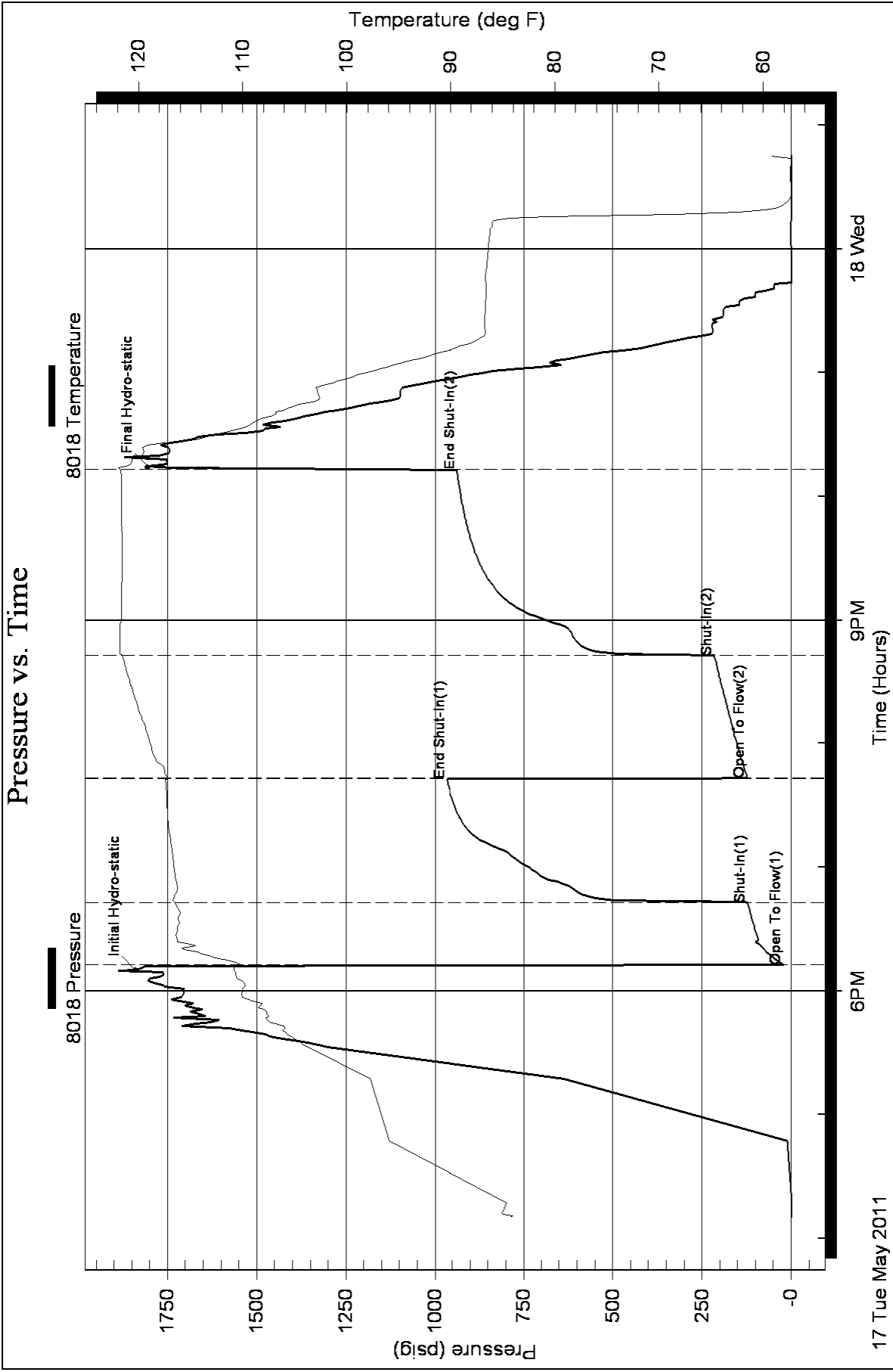
Recovery Information

Recovery Table

| Length ft | Description | Volume bbl |
|--------------|--------------------------------------|---------------|
| 0.00 | API: .255 @ 64 Degrees F = 29000 PPM | 0.000 |
| 60.00 | OSMW 35% <i>m</i> 65% <i>w</i> | 0.295 |
| 246.00 | OSMW 15% <i>m</i> 85% <i>w</i> | 2.904 |
| 109.00 | OSWM 30% <i>w</i> 70% <i>m</i> | 1.529 |
| 15.00 | 100% <i>o</i> | 0.210 |

Total Length: 430.00 ft Total Volume: 4.938 bbl
 Num Fluid Samples: 0 Num Gas Bombs: 0 Serial #:
 Laboratory Name: Laboratory Location:
 Recovery Comments: API: 33 @ 60 Degrees F = 33.

Pressure vs. Time





TRILOBITE TESTING, INC.

DRILL STEM TEST REPORT

Murfin Drilling Company
 250 N Water STE Site 300
 Wichita, KS 67202
 ATTN: Robert Hendrix

Lundgren #1-36
S 36-14-30
 Job Ticket: 43129 **DST#: 2**
 Test Start: 2011.05.18 @ 09:10:00

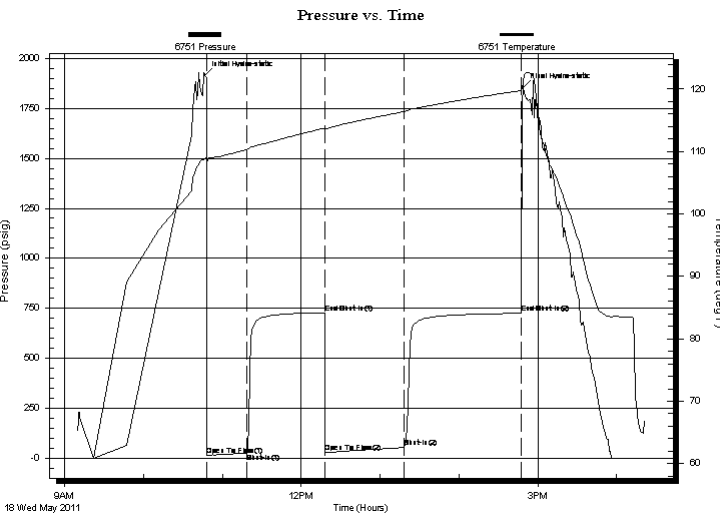
GENERAL INFORMATION:

Formation: **Lansing, D**
 Deviated: No Whipstock: ft (KB)
 Time Tool Opened: 10:48:10
 Time Test Ended: 16:21:39
 Interval: **3782.00 ft (KB) To 3799.00 ft (KB) (TVD)**
 Total Depth: 3799.00 ft (KB) (TVD)
 Hole Diameter: 7.88 inches Hole Condition: Good
 Test Type: Conventional Bottom Hole
 Tester: Chuck Smith - Jace M
 Unit No: 37
 Reference Elevations: 2692.00 ft (KB)
 2687.00 ft (CF)
 KB to GR/CF: 5.00 ft

Serial #: 6751 Outside

Press @ Run Depth: 54.31 psig @ 3783.00 ft (KB) Capacity: 8000.00 psig
 Start Date: 2011.05.18 End Date: 2011.05.18 Last Calib.: 2011.05.18
 Start Time: 09:10:05 End Time: 16:21:39 Time On Btm: 2011.05.18 @ 10:46:50
 Time Off Btm: 2011.05.18 @ 14:48:50

TEST COMMENT: IF: 1" blow
 IS: No Return
 FF: 1" blow
 FIS: No Return



PRESSURE SUMMARY

| Time (Min.) | Pressure (psig) | Temp (deg F) | Annotation |
|-------------|-----------------|--------------|----------------------|
| 0 | 1913.96 | 108.85 | Initial Hydro-static |
| 2 | 13.99 | 107.90 | Open To Flow (1) |
| 32 | 27.27 | 110.34 | Shut-In(1) |
| 92 | 728.40 | 113.79 | End Shut-In(1) |
| 92 | 29.15 | 113.48 | Open To Flow (2) |
| 152 | 54.31 | 116.40 | Shut-In(2) |
| 241 | 725.14 | 119.77 | End Shut-In(2) |
| 242 | 1855.49 | 121.38 | Final Hydro-static |

Recovery

| Length (ft) | Description | Volume (bbl) |
|-------------|-------------|--------------|
| 150.00 | 45% m 55% w | 0.74 |
| 30.00 | 100% w | 0.15 |
| | | |
| | | |
| | | |

Gas Rates

| Choke (inches) | Pressure (psig) | Gas Rate (Mcf/d) |
|----------------|-----------------|------------------|
| | | |



**TRILOBITE
TESTING, INC.**

DRILL STEM TEST REPORT

FLUID SUMMARY

Murfin Drilling Company
250 N Water STE Site 300
Wichita, KS 67202
ATTN: Robert Hendrix

Lundgren #1-36
S 36-14-30
Job Ticket: 43129 **DST#: 2**
Test Start: 2011.05.18 @ 09:10:00

Mud and Cushion Information

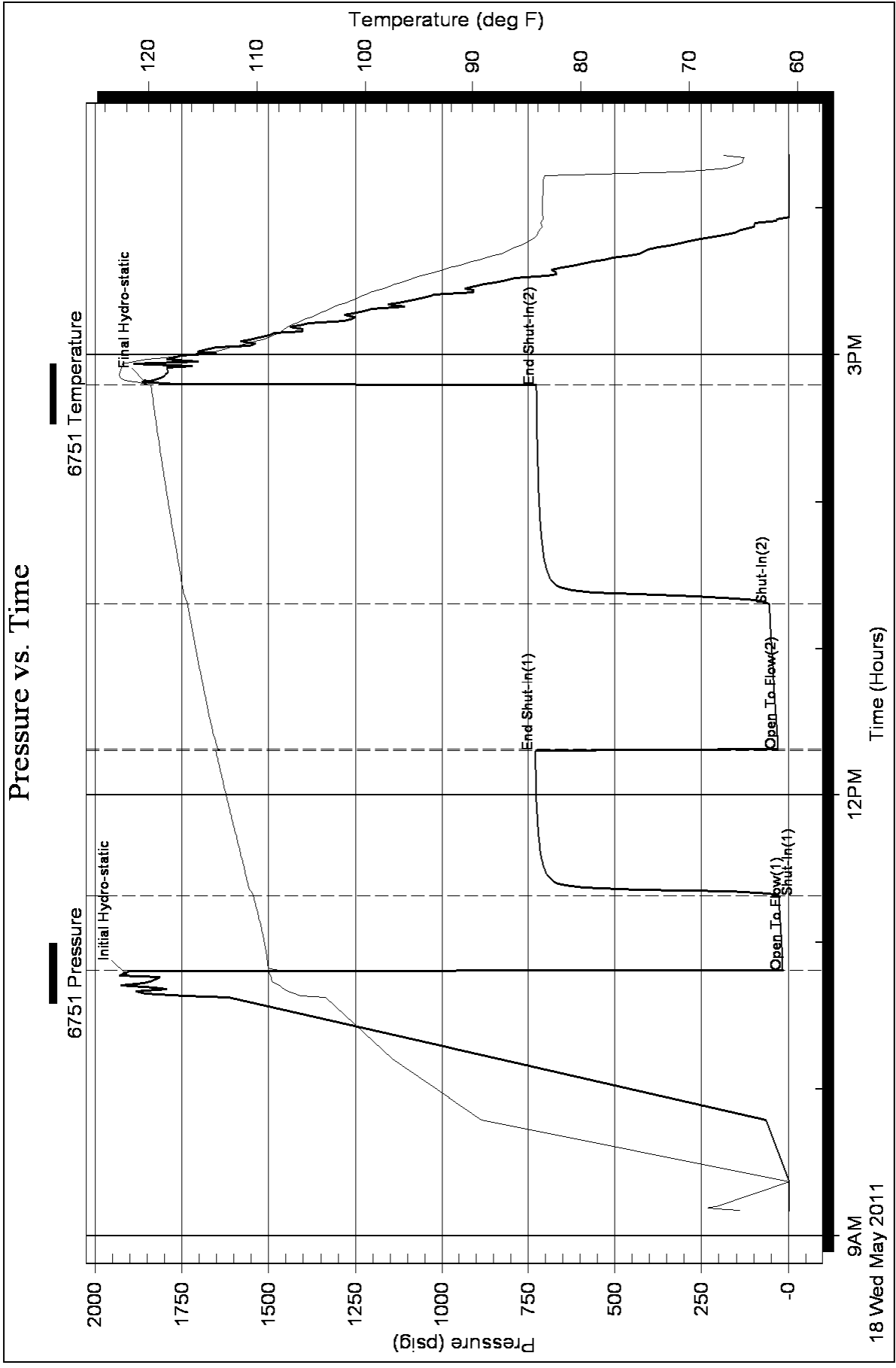
| | | | |
|----------------------------------|----------------------------|-----------------|-----------|
| Mud Type: Gel Chem | Cushion Type: | Oil API: | deg API |
| Mud Weight: 9.00 lb/gal | Cushion Length: ft | Water Salinity: | 48000 ppm |
| Viscosity: 51.00 sec/qt | Cushion Volume: bbl | | |
| Water Loss: 7.99 in ³ | Gas Cushion Type: | | |
| Resistivity: 0.00 ohm.m | Gas Cushion Pressure: psig | | |
| Salinity: 2000.00 ppm | | | |
| Filter Cake: 2.00 inches | | | |

Recovery Information

Recovery Table

| Length ft | Description | Volume bbl |
|--------------|---------------------------|---------------|
| 150.00 | 45% <i>m</i> 55% <i>w</i> | 0.738 |
| 30.00 | 100% <i>w</i> | 0.148 |

Total Length: 180.00 ft Total Volume: 0.886 bbl
 Num Fluid Samples: 0 Num Gas Bombs: 0 Serial #:
 Laboratory Name: Laboratory Location:
 Recovery Comments: API: .15 @ 71 Degrees F = 48000 PPM





TRILOBITE TESTING, INC

DRILL STEM TEST REPORT

Murfin Drilling Company
 250 N Water STE Site 300
 Wichita, KS 67202
 ATTN: Robert Hendrix

Lundgren #1-36
S 36-14-30
 Job Ticket: 43130 **DST#: 3**
 Test Start: 2011.05.19 @ 03:37:00

GENERAL INFORMATION:

Formation: **Lansing E-F**
 Deviated: No Whipstock: ft (KB)
 Time Tool Opened: 05:25:10
 Time Test Ended: 11:19:09
 Interval: **3794.00 ft (KB) To 3833.00 ft (KB) (TVD)**
 Total Depth: 3833.00 ft (KB) (TVD)
 Hole Diameter: 7.88 inches Hole Condition: Good
 Test Type: Conventional Bottom Hole
 Tester: Chuck Smith - Jace M
 Unit No: 37
 Reference Elevations: 2692.00 ft (KB)
 2687.00 ft (CF)
 KB to GR/CF: 5.00 ft

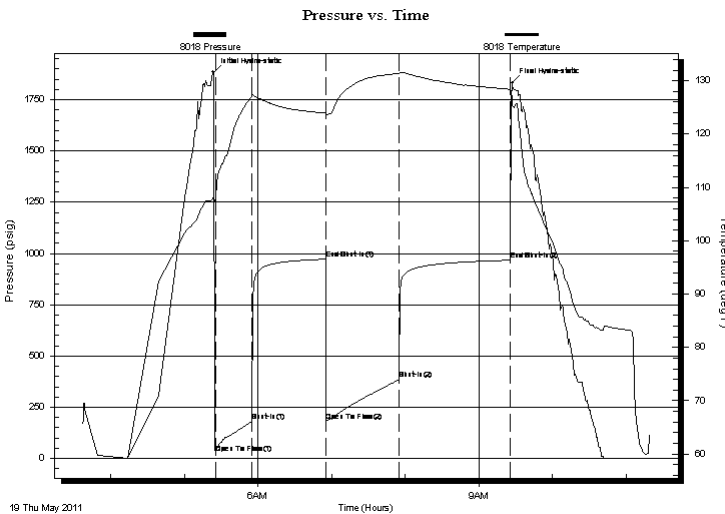
Serial #: 8018

Inside

Press @ Run Depth: 384.69 psig @ 3795.00 ft (KB) Capacity: 8000.00 psig
 Start Date: 2011.05.19 End Date: 2011.05.19 Last Calib.: 2011.05.19
 Start Time: 03:37:05 End Time: 11:19:09 Time On Btm: 2011.05.19 @ 05:23:50
 Time Off Btm: 2011.05.19 @ 09:27:09

TEST COMMENT: IF: B.O.B in 11.5 min.
 IS: Weak surface return
 FF: B.O.B in 12.5 min.
 FIS: Weak surface return died in 40 min.

PRESSURE SUMMARY



| Time (Min.) | Pressure (psig) | Temp (deg F) | Annotation |
|-------------|-----------------|--------------|----------------------|
| 0 | 1883.00 | 108.20 | Initial Hydro-static |
| 2 | 24.23 | 107.84 | Open To Flow (1) |
| 32 | 181.61 | 127.01 | Shut-In(1) |
| 92 | 972.07 | 123.90 | End Shut-In(1) |
| 92 | 182.84 | 123.52 | Open To Flow (2) |
| 152 | 384.69 | 131.38 | Shut-In(2) |
| 242 | 966.86 | 128.42 | End Shut-In(2) |
| 244 | 1830.69 | 126.51 | Final Hydro-static |

Recovery

| Length (ft) | Description | Volume (bbl) |
|-------------|-------------------------------------|--------------|
| 0.00 | API: .17 @ 61 Degrees F = 50000 PPM | 0.00 |
| 184.00 | 5% m 95% w | 1.49 |
| 523.00 | 30% m 70% w | 7.34 |
| 93.00 | 45% m 55% w | 1.30 |
| | | |
| | | |

Gas Rates

| Choke (inches) | Pressure (psig) | Gas Rate (Mcf/d) |
|----------------|-----------------|------------------|
| | | |



**TRILOBITE
TESTING, INC**

DRILL STEM TEST REPORT

FLUID SUMMARY

Murfin Drilling Company
250 N Water STE Site 300
Wichita, KS 67202
ATTN: Robert Hendrix

Lundgren #1-36
S 36-14-30
Job Ticket: 43130 **DST#: 3**
Test Start: 2011.05.19 @ 03:37:00

Mud and Cushion Information

| | | | |
|----------------------------------|----------------------------|-----------------|-----------|
| Mud Type: Gel Chem | Cushion Type: | Oil API: | deg API |
| Mud Weight: 9.00 lb/gal | Cushion Length: ft | Water Salinity: | 50000 ppm |
| Viscosity: 46.00 sec/qt | Cushion Volume: bbl | | |
| Water Loss: 7.60 in ³ | Gas Cushion Type: | | |
| Resistivity: 0.00 ohm.m | Gas Cushion Pressure: psig | | |
| Salinity: 2700.00 ppm | | | |
| Filter Cake: 2.00 inches | | | |

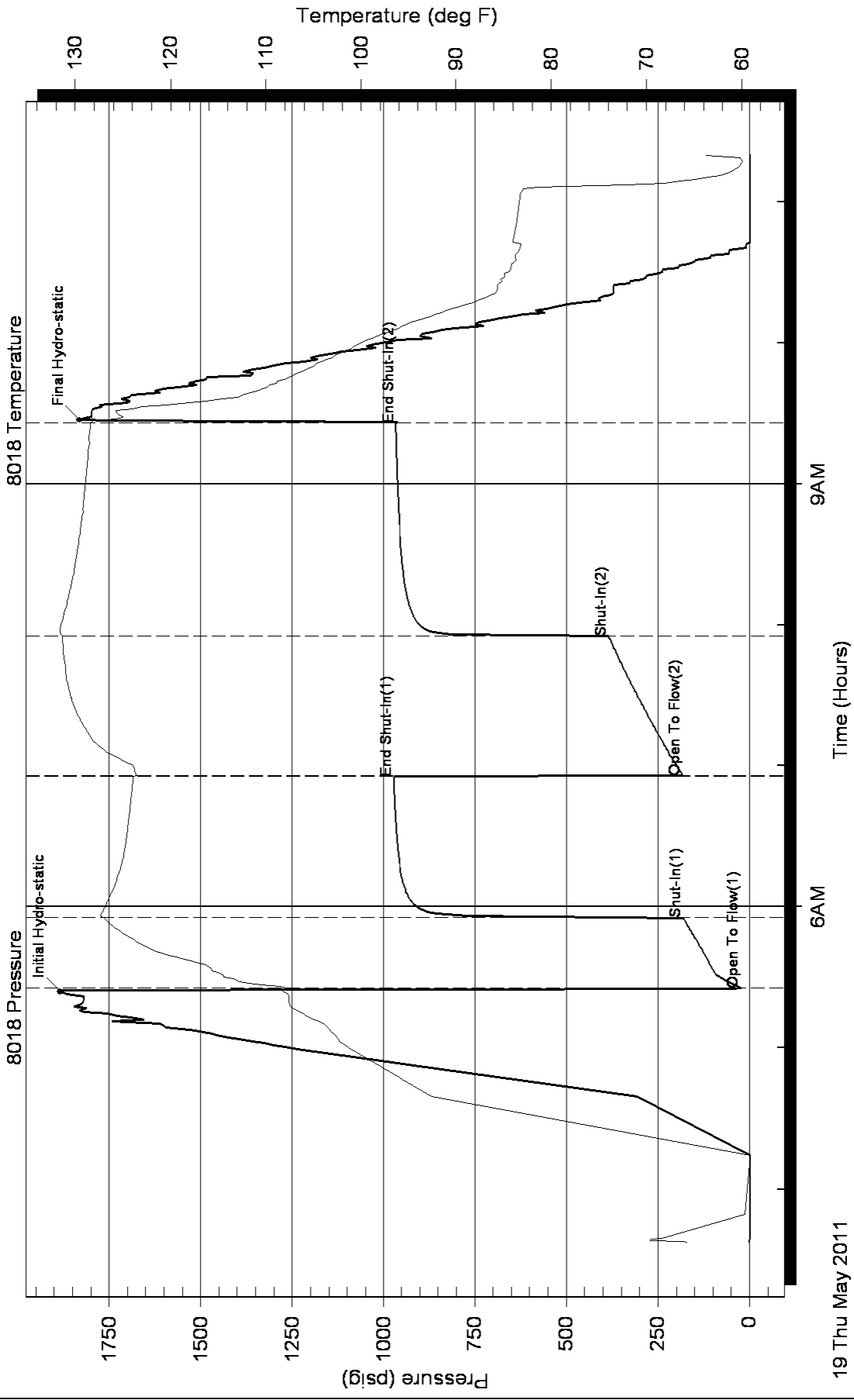
Recovery Information

Recovery Table

| Length ft | Description | Volume bbl |
|--------------|-------------------------------------|---------------|
| 0.00 | API: .17 @ 61 Degrees F = 50000 PPM | 0.000 |
| 184.00 | 5% <i>m</i> 95% <i>w</i> | 1.488 |
| 523.00 | 30% <i>m</i> 70% <i>w</i> | 7.336 |
| 93.00 | 45% <i>m</i> 55% <i>w</i> | 1.305 |

Total Length: 800.00 ft Total Volume: 10.129 bbl
Num Fluid Samples: 0 Num Gas Bombs: 0 Serial #:
Laboratory Name: Laboratory Location:
Recovery Comments:

Pressure vs. Time





TRILOBITE TESTING, INC

DRILL STEM TEST REPORT

Murfin Drilling Company
 250 N Water STE Site 300
 Wichita, KS 67202
 ATTN: Robert Hendrix

Lundgren #1-36
S 36-14-30
 Job Ticket: 43131 **DST#: 4**
 Test Start: 2011.05.20 @ 05:30:00

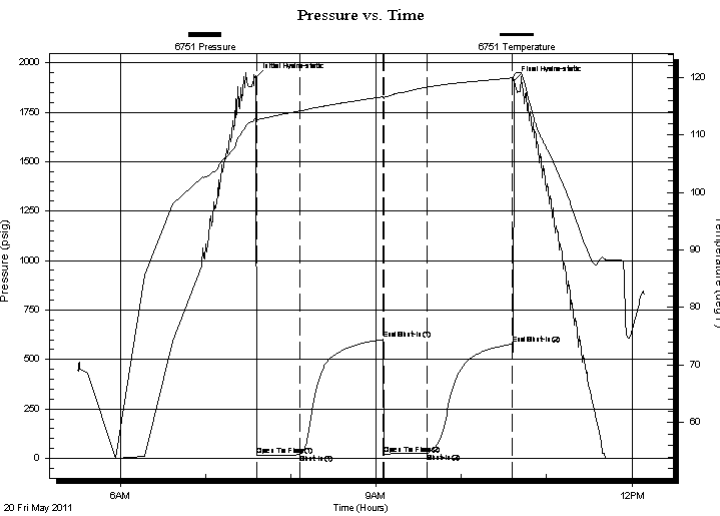
GENERAL INFORMATION:

Formation: **Lansing, HI**
 Deviated: No Whipstock: ft (KB)
 Time Tool Opened: 07:36:00
 Time Test Ended: 12:09:09
 Interval: **3905.00 ft (KB) To 3951.00 ft (KB) (TVD)**
 Total Depth: 3951.00 ft (KB) (TVD)
 Hole Diameter: 7.88 inches Hole Condition: Good
 Test Type: Conventional Bottom Hole
 Tester: Chuck Smith - Jace M
 Unit No: 37
 Reference Elevations: 2692.00 ft (KB)
 2687.00 ft (CF)
 KB to GR/CF: 5.00 ft

Serial #: 6751 Outside

Press @ Run Depth: 25.70 psig @ 3906.00 ft (KB) Capacity: 8000.00 psig
 Start Date: 2011.05.20 End Date: 2011.05.20 Last Calib.: 2011.05.20
 Start Time: 05:30:05 End Time: 12:09:10 Time On Btm: 2011.05.20 @ 07:35:40
 Time Off Btm: 2011.05.20 @ 10:37:09

TEST COMMENT: IF: Built to 1/2" blow died in 25 min.
 IS: No Return
 FF: Dead Blow
 FIS: No Return



PRESSURE SUMMARY

| Time (Min.) | Pressure (psig) | Temp (deg F) | Annotation |
|-------------|-----------------|--------------|----------------------|
| 0 | 1924.95 | 112.85 | Initial Hydro-static |
| 1 | 16.75 | 112.26 | Open To Flow (1) |
| 31 | 18.03 | 114.18 | Shut-In(1) |
| 90 | 601.39 | 116.65 | End Shut-In(1) |
| 90 | 21.47 | 116.30 | Open To Flow (2) |
| 121 | 25.70 | 118.30 | Shut-In(2) |
| 181 | 577.35 | 119.93 | End Shut-In(2) |
| 182 | 1910.61 | 120.42 | Final Hydro-static |

Recovery

| Length (ft) | Description | Volume (bbl) |
|-------------|---------------------------|--------------|
| 30.00 | osm 100% oil scum in tool | 0.15 |
| | | |
| | | |
| | | |
| | | |

Gas Rates

| Choke (inches) | Pressure (psig) | Gas Rate (Mcf/d) |
|----------------|-----------------|------------------|
| | | |



**TRILOBITE
TESTING, INC**

DRILL STEM TEST REPORT

FLUID SUMMARY

Murfin Drilling Company
250 N Water STE Site 300
Wichita, KS 67202
ATTN: Robert Hendrix

Lundgren #1-36
S 36-14-30
Job Ticket: 43131 **DST#: 4**
Test Start: 2011.05.20 @ 05:30:00

Mud and Cushion Information

| | | | |
|----------------------------------|----------------------------|-----------------|---------|
| Mud Type: Gel Chem | Cushion Type: | Oil API: | deg API |
| Mud Weight: 9.00 lb/gal | Cushion Length: ft | Water Salinity: | ppm |
| Viscosity: 41.00 sec/qt | Cushion Volume: bbl | | |
| Water Loss: 7.59 in ³ | Gas Cushion Type: | | |
| Resistivity: 0.00 ohm.m | Gas Cushion Pressure: psig | | |
| Salinity: 2500.00 ppm | | | |
| Filter Cake: 2.00 inches | | | |

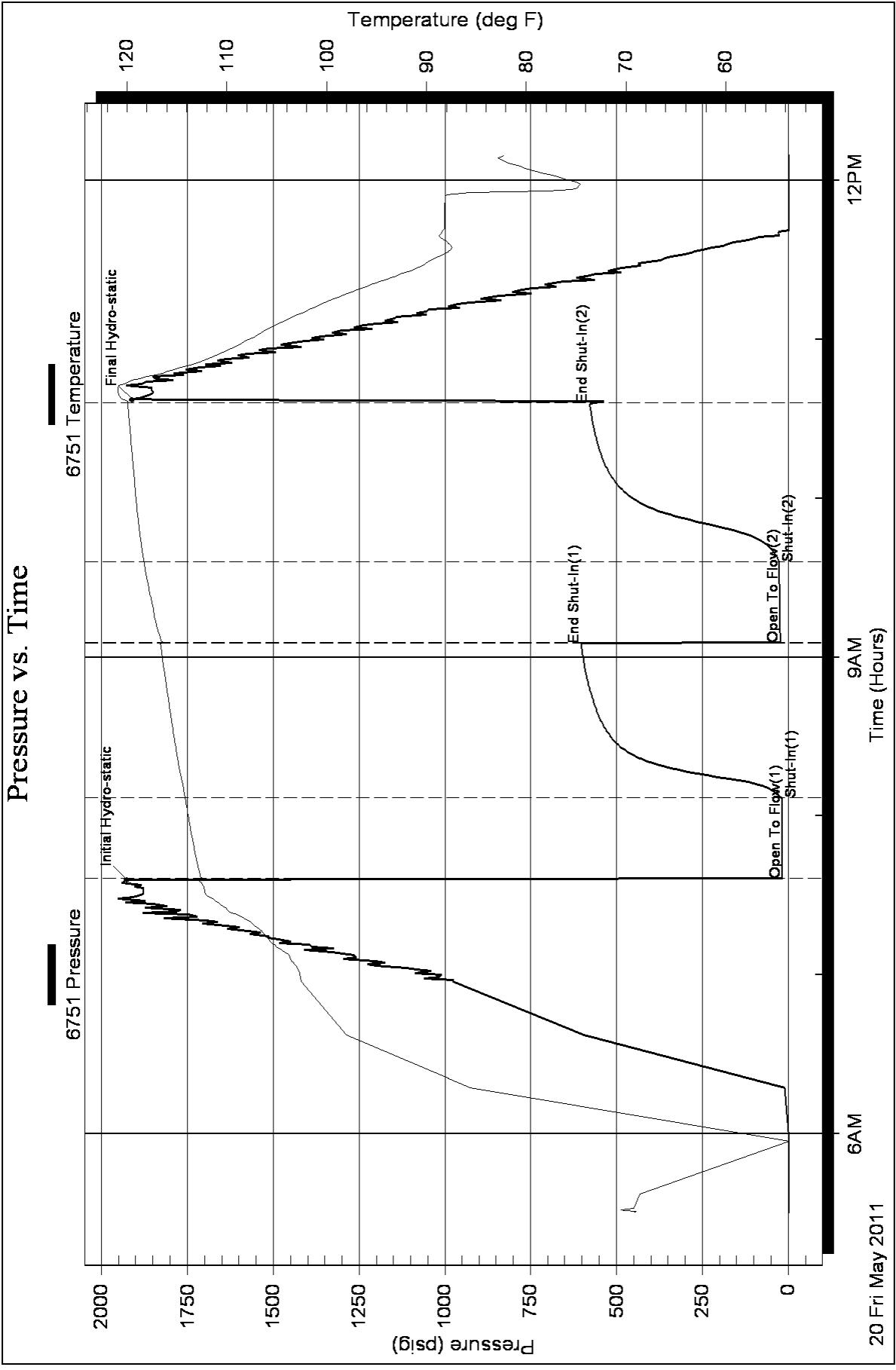
Recovery Information

Recovery Table

| Length ft | Description | Volume bbl |
|--------------|----------------------------|---------------|
| 30.00 | osm 100%m oil scum in tool | 0.148 |

Total Length: 30.00 ft Total Volume: 0.148 bbl
 Num Fluid Samples: 0 Num Gas Bombs: 0 Serial #:
 Laboratory Name: Laboratory Location:
 Recovery Comments:

Pressure vs. Time





**TRILOBITE
TESTING, INC.**

DRILL STEM TEST REPORT

Murfin Drilling Company
250 N Water STE Site 300
Wichita, KS 67202
ATTN: Robert Hendrix

Lundgren #1-36
S 36-14-30
Job Ticket: 43132 **DST#: 5**
Test Start: 2011.05.21 @ 01:00:00

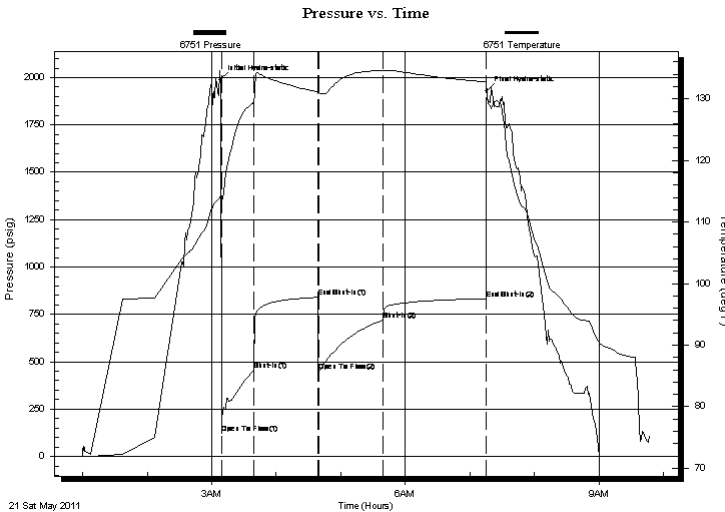
GENERAL INFORMATION:

Formation: **Lansing " I J K"**
Deviated: No Whipstock: ft (KB) Test Type: Conventional Bottom Hole
Time Tool Opened: 03:09:00 Tester: Chuck Smith - Jace M
Time Test Ended: 09:47:19 Unit No: 37
Interval: 3948.00 ft (KB) To 4023.00 ft (KB) (TVD) Reference Elevations: 2692.00 ft (KB)
Total Depth: 4023.00 ft (KB) (TVD) 2687.00 ft (CF)
Hole Diameter: 7.88 inches Hole Condition: Good KB to GR/CF: 5.00 ft

Serial #: 6751 Outside
Press @ Run Depth: 719.92 psig @ 3949.00 ft (KB) Capacity: 8000.00 psig
Start Date: 2011.05.21 End Date: 2011.05.21 Last Calib.: 2011.05.21
Start Time: 01:00:02 End Time: 09:47:19 Time On Btm: 2011.05.21 @ 03:08:00
Time Off Btm: 2011.05.21 @ 07:16:00

TEST COMMENT: IF: B.O.B in 3 min.
IS: Built to 1" Return Blow
FF: B.O.B in 4.5 min.
FIS: No Return

PRESSURE SUMMARY



| Time (Min.) | Pressure (psig) | Temp (deg F) | Annotation |
|-------------|-----------------|--------------|----------------------|
| 0 | 1986.76 | 114.04 | Initial Hydro-static |
| 1 | 123.14 | 112.84 | Open To Flow (1) |
| 31 | 456.72 | 129.04 | Shut-In(1) |
| 91 | 840.52 | 131.15 | End Shut-In(1) |
| 92 | 450.27 | 130.99 | Open To Flow (2) |
| 152 | 719.92 | 134.58 | Shut-In(2) |
| 247 | 833.18 | 132.75 | End Shut-In(2) |
| 248 | 1930.26 | 130.49 | Final Hydro-static |

Recovery

| Length (ft) | Description | Volume (bbl) |
|-------------|-------------------------------------|--------------|
| 0.00 | RW: .14 @ 62 F = 60000 | 0.00 |
| 180.00 | mw 50%m 50%w | 0.89 |
| 930.00 | mw 20%m 80%w popping gas circulated | 13.05 |
| 186.00 | mw 20%m 80%w popping gas | 2.61 |
| 248.00 | osw m 35%w 65%m | 3.48 |

Gas Rates

| Choke (inches) | Pressure (psig) | Gas Rate (Mcf/d) |
|----------------|-----------------|------------------|
| | | |



**TRILOBITE
TESTING, INC.**

DRILL STEM TEST REPORT

FLUID SUMMARY

Murfin Drilling Company
250 N Water STE Site 300
Wichita, KS 67202
ATTN: Robert Hendrix

Lundgren #1-36
S 36-14-30
Job Ticket: 43132 **DST#: 5**
Test Start: 2011.05.21 @ 01:00:00

Mud and Cushion Information

| | | | |
|----------------------------------|----------------------------|-----------------|-----------|
| Mud Type: Gel Chem | Cushion Type: | Oil API: | deg API |
| Mud Weight: 9.00 lb/gal | Cushion Length: ft | Water Salinity: | 60000 ppm |
| Viscosity: 49.00 sec/qt | Cushion Volume: bbl | | |
| Water Loss: 7.99 in ³ | Gas Cushion Type: | | |
| Resistivity: 0.00 ohm.m | Gas Cushion Pressure: psig | | |
| Salinity: 2200.00 ppm | | | |
| Filter Cake: 2.00 inches | | | |

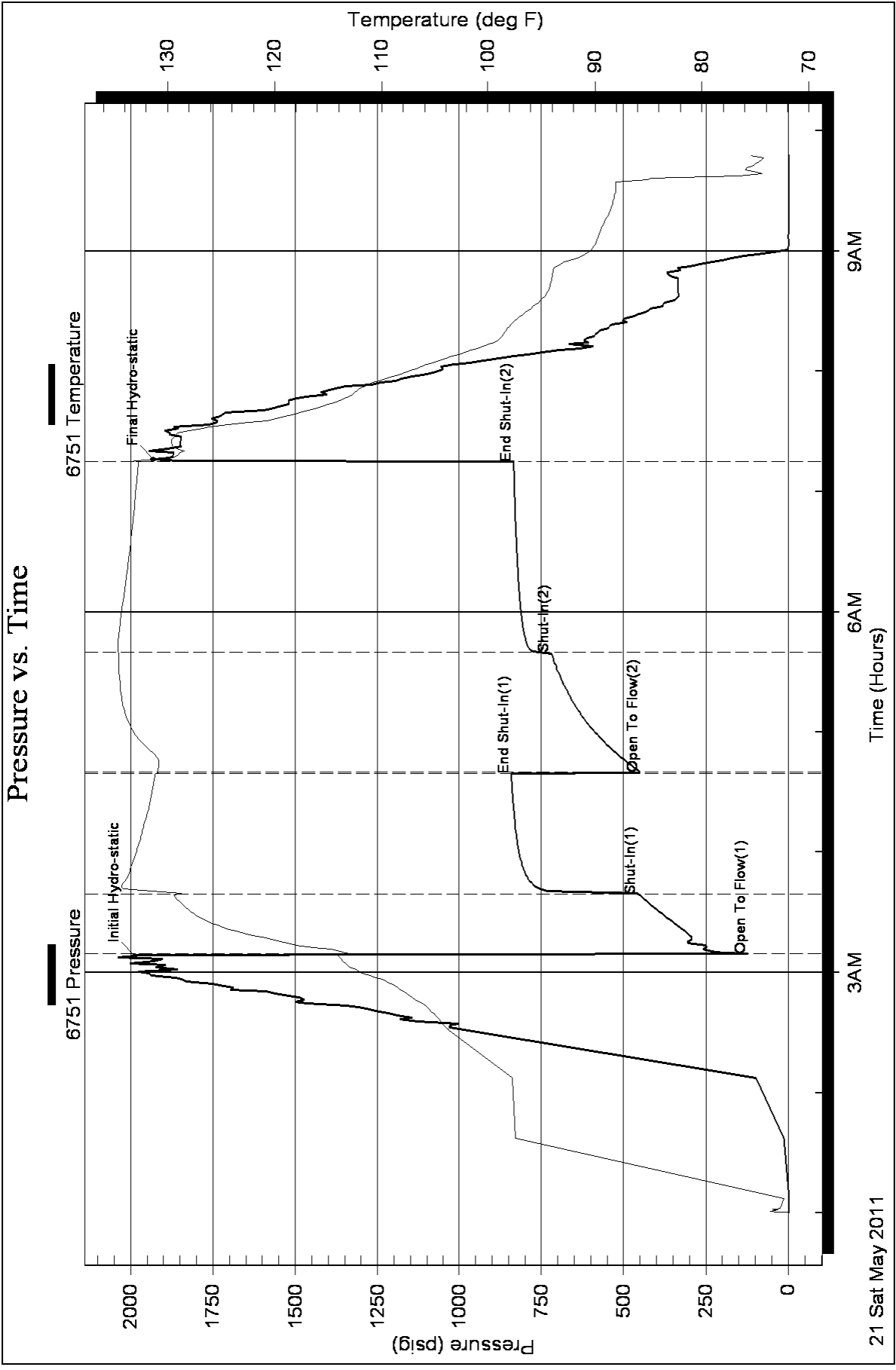
Recovery Information

Recovery Table

| Length ft | Description | Volume bbl |
|--------------|---|---------------|
| 0.00 | RW: .14 @ 62 F = 60000 | 0.000 |
| 180.00 | mw 50%m 50%w | 0.885 |
| 930.00 | mw 20%m 80%w popping gas circulated out | 13.045 |
| 186.00 | mw 20%m 80%w popping gas | 2.609 |
| 248.00 | osw m 35%w 65%m | 3.479 |

Total Length: 1544.00 ft Total Volume: 20.018 bbl
 Num Fluid Samples: 0 Num Gas Bombs: 0 Serial #:
 Laboratory Name: Laboratory Location:
 Recovery Comments:

Pressure vs. Time





TRILOBITE TESTING, INC

DRILL STEM TEST REPORT

Murfin Drilling Company
 250 N Water STE Site 300
 Wichita, KS 67202
 ATTN: Robert Hendrix

Lundgren #1-36
S 36-14-30
 Job Ticket: 43133 **DST#: 6**
 Test Start: 2011.05.22 @ 16:24:00

GENERAL INFORMATION:

Formation: **Pawnee & Myric Stati**
 Deviated: No Whipstock: ft (KB)
 Time Tool Opened: 18:20:30
 Time Test Ended: 01:23:49
 Interval: **4165.00 ft (KB) To 4233.00 ft (KB) (TVD)**
 Total Depth: 4233.00 ft (KB) (TVD)
 Hole Diameter: 7.88 inches Hole Condition: Good
 Test Type: Conventional Bottom Hole
 Tester: Chuck Smith - Jace M
 Unit No: 37
 Reference Elevations: 2692.00 ft (KB)
 2687.00 ft (CF)
 KB to GR/CF: 5.00 ft

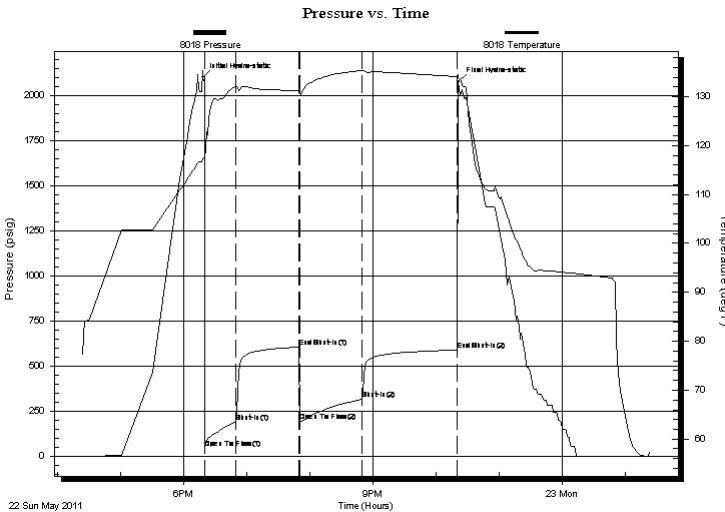
Serial #: 8018

Inside

Press @ Run Depth: 316.69 psig @ 4166.00 ft (KB) Capacity: 8000.00 psig
 Start Date: 2011.05.22 End Date: 2011.05.23 Last Calib.: 2011.05.23
 Start Time: 16:24:02 End Time: 01:23:49 Time On Btm: 2011.05.22 @ 18:18:30
 Time Off Btm: 2011.05.22 @ 22:21:30

TEST COMMENT: IF: B.O.B. in 6 min.
 IS: Built to 4.5" & Died to 2"
 FF: B.O.B in 9 min.
 FIS: B.O.B 14 min Return Blow

PRESSURE SUMMARY



| Time (Min.) | Pressure (psig) | Temp (deg F) | Annotation |
|-------------|-----------------|--------------|----------------------|
| 0 | 2099.06 | 117.21 | Initial Hydro-static |
| 2 | 45.64 | 117.05 | Open To Flow (1) |
| 32 | 188.69 | 132.07 | Shut-In(1) |
| 92 | 604.99 | 131.16 | End Shut-In(1) |
| 92 | 194.69 | 130.86 | Open To Flow (2) |
| 152 | 316.69 | 135.35 | Shut-In(2) |
| 242 | 589.65 | 134.10 | End Shut-In(2) |
| 243 | 2074.91 | 134.18 | Final Hydro-static |

Recovery

| Length (ft) | Description | Volume (bbl) |
|-------------|---------------------------|--------------|
| 120.00 | ogmw 10%o 15%g 35%m 40%w | 0.59 |
| 124.00 | mw og 20%m 20%w 30%o 30%g | 1.74 |
| 124.00 | mog 40%m 40%o 20%g | 1.74 |
| 186.00 | omg 20%o 30%m 50%g | 2.61 |
| 201.00 | gmo 5%g 5%m 90%o | 2.82 |
| 0.00 | 450 FT gas in pipe | 0.00 |

Gas Rates

| Choke (inches) | Pressure (psig) | Gas Rate (Mcf/d) |
|----------------|-----------------|------------------|
| | | |



**TRILOBITE
TESTING, INC**

DRILL STEM TEST REPORT

FLUID SUMMARY

Murfin Drilling Company
250 N Water STE Site 300
Wichita, KS 67202
ATTN: Robert Hendrix

Lundgren #1-36
S 36-14-30
Job Ticket: 43133 **DST#: 6**
Test Start: 2011.05.22 @ 16:24:00

Mud and Cushion Information

| | | |
|----------------------------------|----------------------------|---------------------------|
| Mud Type: Gel Chem | Cushion Type: | Oil API: 34 deg API |
| Mud Weight: 9.00 lb/gal | Cushion Length: ft | Water Salinity: 49000 ppm |
| Viscosity: 56.00 sec/qt | Cushion Volume: bbl | |
| Water Loss: 9.19 in ³ | Gas Cushion Type: | |
| Resistivity: 0.00 ohm.m | Gas Cushion Pressure: psig | |
| Salinity: 2800.00 ppm | | |
| Filter Cake: 2.00 inches | | |

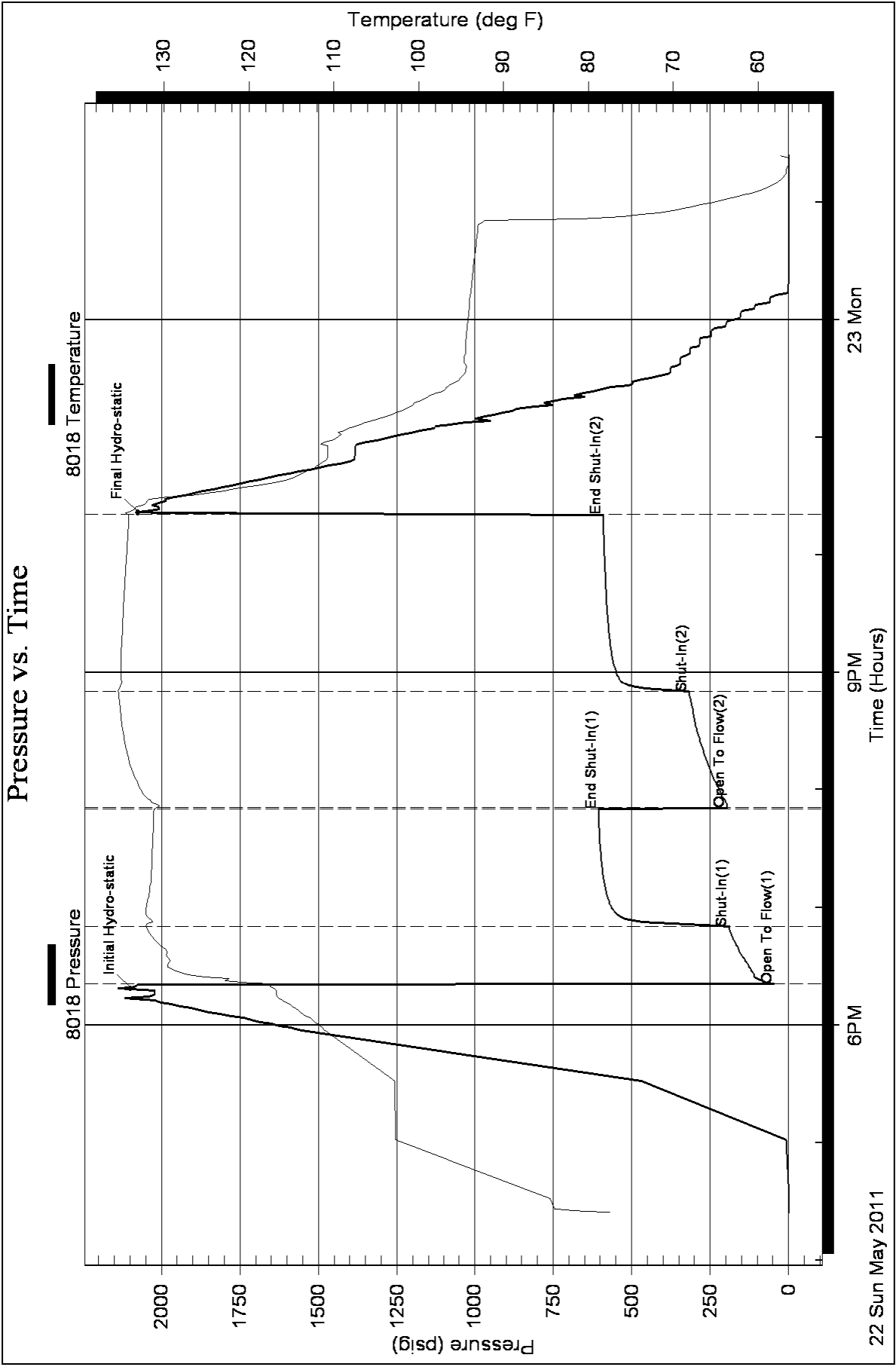
Recovery Information

Recovery Table

| Length ft | Description | Volume bbl |
|--------------|---------------------------|---------------|
| 120.00 | ogmw 10%o 15%g 35%m 40%w | 0.590 |
| 124.00 | mw og 20%m 20%w 30%o 30%g | 1.739 |
| 124.00 | mog 40%m 40%o 20%g | 1.739 |
| 186.00 | omg 20%o 30%m 50%g | 2.609 |
| 201.00 | gmo 5%g 5%m 90%o | 2.820 |
| 0.00 | 450 FT gas in pipe | 0.000 |

Total Length: 755.00 ft Total Volume: 9.497 bbl
 Num Fluid Samples: 0 Num Gas Bombs: 0 Serial #:
 Laboratory Name: Laboratory Location:
 Recovery Comments: API: 34 @ 60 F = 34 RW: .177 @ 60 Degrees F = 49000 PPM

Pressure vs. Time





**TRILOBITE
TESTING, INC**

DRILL STEM TEST REPORT

Murfin Drilling Company
250 N Water STE Site 300
Wichita, KS 67202
ATTN: Robert Hendrix

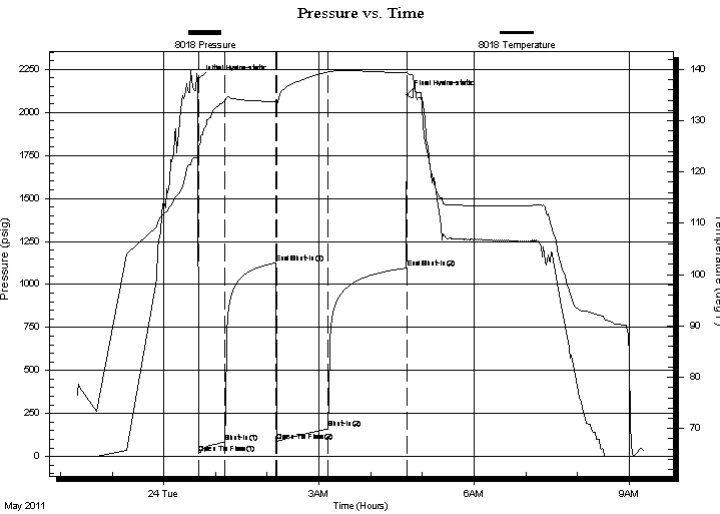
Lundgren #1-36
S 36-14-30
Job Ticket: 43134 **DST#: 7**
Test Start: 2011.05.23 @ 22:20:00

GENERAL INFORMATION:

Formation: **Mississippi**
Deviated: No Whipstock: ft (KB)
Time Tool Opened: 00:40:30
Time Test Ended: 09:18:40
Test Type: Conventional Bottom Hole
Tester: Chuck Smith - Jace M
Unit No: 37
Interval: **4353.00 ft (KB) To 4377.00 ft (KB) (TVD)**
Reference Elevations: 2692.00 ft (KB)
Total Depth: 4377.00 ft (KB) (TVD) 2687.00 ft (CF)
Hole Diameter: 7.88 inches Hole Condition: Good KB to GR/CF: 5.00 ft

Serial #: 8018 Inside
Press @ Run Depth: 161.54 psig @ 4354.00 ft (KB) Capacity: 8000.00 psig
Start Date: 2011.05.23 End Date: 2011.05.24 Last Calib.: 2011.05.24
Start Time: 22:20:02 End Time: 09:18:40 Time On Btm: 2011.05.24 @ 00:39:50
Time Off Btm: 2011.05.24 @ 04:42:30

TEST COMMENT: IF: B.O.B. in 23 min.
IS: Built to 1/2" Return Blow
FF: B.O.B in 22 min.
FIS: Built to 1/4" Return Blow



PRESSURE SUMMARY

| Time (Min.) | Pressure (psig) | Temp (deg F) | Annotation |
|-------------|-----------------|--------------|----------------------|
| 0 | 2191.85 | 122.69 | Initial Hydro-static |
| 1 | 18.24 | 121.67 | Open To Flow (1) |
| 31 | 83.61 | 133.93 | Shut-In(1) |
| 91 | 1126.30 | 133.70 | End Shut-In(1) |
| 92 | 90.23 | 133.20 | Open To Flow (2) |
| 152 | 161.54 | 139.52 | Shut-In(2) |
| 243 | 1094.99 | 139.34 | End Shut-In(2) |
| 243 | 2101.73 | 139.58 | Final Hydro-static |

Recovery

| Length (ft) | Description | Volume (bbl) |
|-------------|---------------------|--------------|
| 120.00 | gcom 10%g 10%o 80%m | 0.59 |
| 62.00 | gcmo 10%g 20%m 70%o | 0.87 |
| 186.00 | gco 10%g 90%o | 2.61 |
| 216.00 | 100%o | 3.03 |
| | | |
| | | |

Gas Rates

| | Choke (inches) | Pressure (psig) | Gas Rate (Mcf/d) |
|--|----------------|-----------------|------------------|
| | | | |



**TRILOBITE
TESTING, INC**

DRILL STEM TEST REPORT

FLUID SUMMARY

Murfin Drilling Company
250 N Water STE Site 300
Wichita, KS 67202
ATTN: Robert Hendrix

Lundgren #1-36
S 36-14-30
Job Ticket: 43134 **DST#: 7**
Test Start: 2011.05.23 @ 22:20:00

Mud and Cushion Information

| | | |
|----------------------------------|----------------------------|---------------------|
| Mud Type: Gel Chem | Cushion Type: | Oil API: 34 deg API |
| Mud Weight: 9.00 lb/gal | Cushion Length: ft | Water Salinity: ppm |
| Viscosity: 48.00 sec/qt | Cushion Volume: bbl | |
| Water Loss: 8.39 in ³ | Gas Cushion Type: | |
| Resistivity: 0.00 ohm.m | Gas Cushion Pressure: psig | |
| Salinity: 2500.00 ppm | | |
| Filter Cake: 2.00 inches | | |

Recovery Information

Recovery Table

| Length ft | Description | Volume bbl |
|--------------|---------------------|---------------|
| 120.00 | gcom 10%g 10%o 80%m | 0.590 |
| 62.00 | gcmo 10%g 20%m 70%o | 0.870 |
| 186.00 | gco 10%g 90%o | 2.609 |
| 216.00 | 100%o | 3.030 |

Total Length: 584.00 ft Total Volume: 7.099 bbl
Num Fluid Samples: 0 Num Gas Bombs: 0 Serial #:
Laboratory Name: Laboratory Location:
Recovery Comments: API: 34 @ 60 F

Pressure vs. Time

