



DRILL STEM TEST REPORT

Prepared For: **Grand Mesa Operating**

1700 N Waterfront Parkway
Building 600
Wichita, Kansas 67206+5514

ATTN: Steve Stribling

4/16S/33W/Scott

Dirks 1-4

Start Date: 2011.06.20 @ 18:00:00

End Date: 2011.06.21 @ 00:27:30

Job Ticket #: 16589 DST #: 6

Superior Testers Enterprises LLC
PO Box 138 Great Bend KS 67530
1-800-792-6902

Printed: 2011.06.20 @ 22:42:40

Grand Mesa Operating
Dirks 1-4
4/16S/33W/Scott
DST # 6
Marmaton
2011.06.20



DRILL STEM TEST REPORT

Grand Mesa Operating

Dirks 1-4

1700 N Waterfront Parkway
 Building 600
 Wichita, Kansas 67206+5514
 ATTN: Steve Stribling

4/16S/33W/Scott

Job Ticket: 16589

DST#: 6

Test Start: 2011.06.20 @ 18:00:00

GENERAL INFORMATION:

Formation: **Marmaton**

Deviated: No Whipstock: ft (KB)

Time Tool Opened: 20:17:30

Time Test Ended: 00:27:30

Test Type: Conventional Bottom Hole (Initial)

Tester: Ken Swinney

Unit No: 3325 Scott City/28

Interval: **4448.00 ft (KB) To 4590.00 ft (KB) (TVD)**

Reference Elevations: 3068.00 ft (KB)

Total Depth: 4590.00 ft (KB) (TVD)

3063.00 ft (CF)

Hole Diameter: 7.88 inches Hole Condition: Fair

KB to GR/CF: 5.00 ft

Serial #: **6748** Outside

Press @ Run Depth: 105.48 psig @ 4586.50 ft (KB)

Capacity: 5000.00 psig

Start Date: 2011.06.20

End Date: 2011.06.21

Last Calib.: 2011.06.20

Start Time: 18:00:00

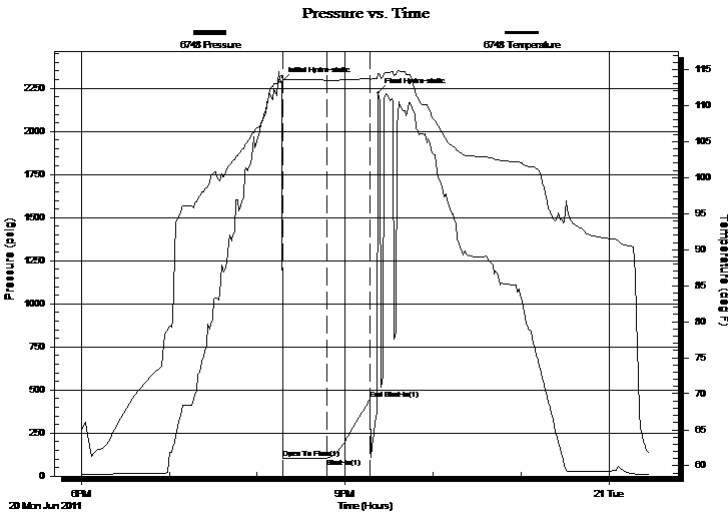
End Time: 00:27:30

Time On Btm: 2011.06.20 @ 20:16:30

Time Off Btm: 2011.06.20 @ 21:22:30

TEST COMMENT: 1ST Open 30 Minutes/Weak blow /Blow built to 1/2 inch
 1ST Shut In 30 Minutes/No blow back
 2ND Open Lost packer seal

PRESSURE SUMMARY



Time (Min.)	Pressure (psig)	Temp (deg F)	Annotation
0	2286.71	114.15	Initial Hydro-static
1	102.42	113.57	Open To Flow (1)
31	105.48	113.52	Shut-In(1)
61	446.65	113.78	End Shut-In(1)
66	2224.00	114.46	Final Hydro-static

Recovery

Length (ft)	Description	Volume (bbl)
10.00	Mud 100%	0.05

Gas Rates

Choke (inches)	Pressure (psig)	Gas Rate (Mcf/d)



DRILL STEM TEST REPORT

TOOL DIAGRAM

Grand Mesa Operating

Dirks 1-4

1700 N Waterfront Parkway
 Building 600
 Wichita, Kansas 67206+5514
 ATTN: Steve Stribling

4/16S/33W/Scott

Job Ticket: 16589

DST#: 6

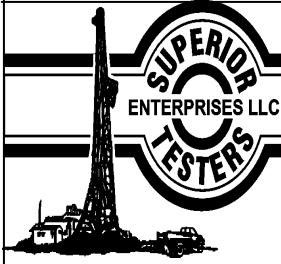
Test Start: 2011.06.20 @ 18:00:00

Tool Information

Drill Pipe:	Length: 4306.00 ft	Diameter: 3.88 inches	Volume: 62.97 bbl	Tool Weight:	2000.00 lb
Heavy Wt. Pipe:	Length: 0.00 ft	Diameter: 0.00 inches	Volume: 0.00 bbl	Weight set on Packer:	20000.00 lb
Drill Collar:	Length: 120.00 ft	Diameter: 2.25 inches	Volume: 0.59 bbl	Weight to Pull Loose:	90000.00 lb
			<u>Total Volume: 63.56 bbl</u>	Tool Chased	0.00 ft
Drill Pipe Above KB:	6.75 ft			String Weight: Initial	60000.00 lb
Depth to Top Packer:	4448.00 ft			Final	60000.00 lb
Depth to Bottom Packer:	ft				
Interval between Packers:	141.50 ft				
Tool Length:	170.25 ft				
Number of Packers:	2	Diameter: 6.75 inches			
Tool Comments:					

Tool Description	Length (ft)	Serial No.	Position	Depth (ft)	Accum. Lengths
Shut-in tool	5.00			4424.25	
Hydraulic tool	5.00			4429.25	
Change over sub	0.75			4430.00	
Jars	6.00			4436.00	
Safety Joint	2.00			4438.00	
Packer	5.00			4443.00	28.75 Bottom Of Top Packer
Packer	5.00			4448.00	
Anchor	0.00			4448.00	
change over sub	0.75			4448.75	
drill pipe	125.00			4573.75	
change over sub	0.75			4574.50	
anchor	10.00			4584.50	
Recorder	1.00	6749	Inside	4585.50	
Recorder	1.00	6748	Outside	4586.50	
bull plug	3.00			4589.50	141.50 Bottom Packers & Anchor

Total Tool Length: 170.25



DRILL STEM TEST REPORT

FLUID SUMMARY

Grand Mesa Operating

Dirks 1-4

1700 N Waterfront Parkway
 Building 600
 Wichita, Kansas 67206+5514
 ATTN: Steve Stribling

4/16S/33W/Scott

Job Ticket: 16589

DST#: 6

Test Start: 2011.06.20 @ 18:00:00

Mud and Cushion Information

Mud Type: Gel Chem
 Mud Weight: 9.00 lb/gal
 Viscosity: 61.00 sec/qt
 Water Loss: 10.39 in³
 Resistivity: ohm.m
 Salinity: 8500.00 ppm
 Filter Cake: 2.00 inches

Cushion Type:
 Cushion Length: ft
 Cushion Volume: bbl
 Gas Cushion Type:
 Gas Cushion Pressure: psig

Oil API: deg API
 Water Salinity: ppm

Recovery Information

Recovery Table

Length ft	Description	Volume bbl
10.00	Mud 100%	0.049

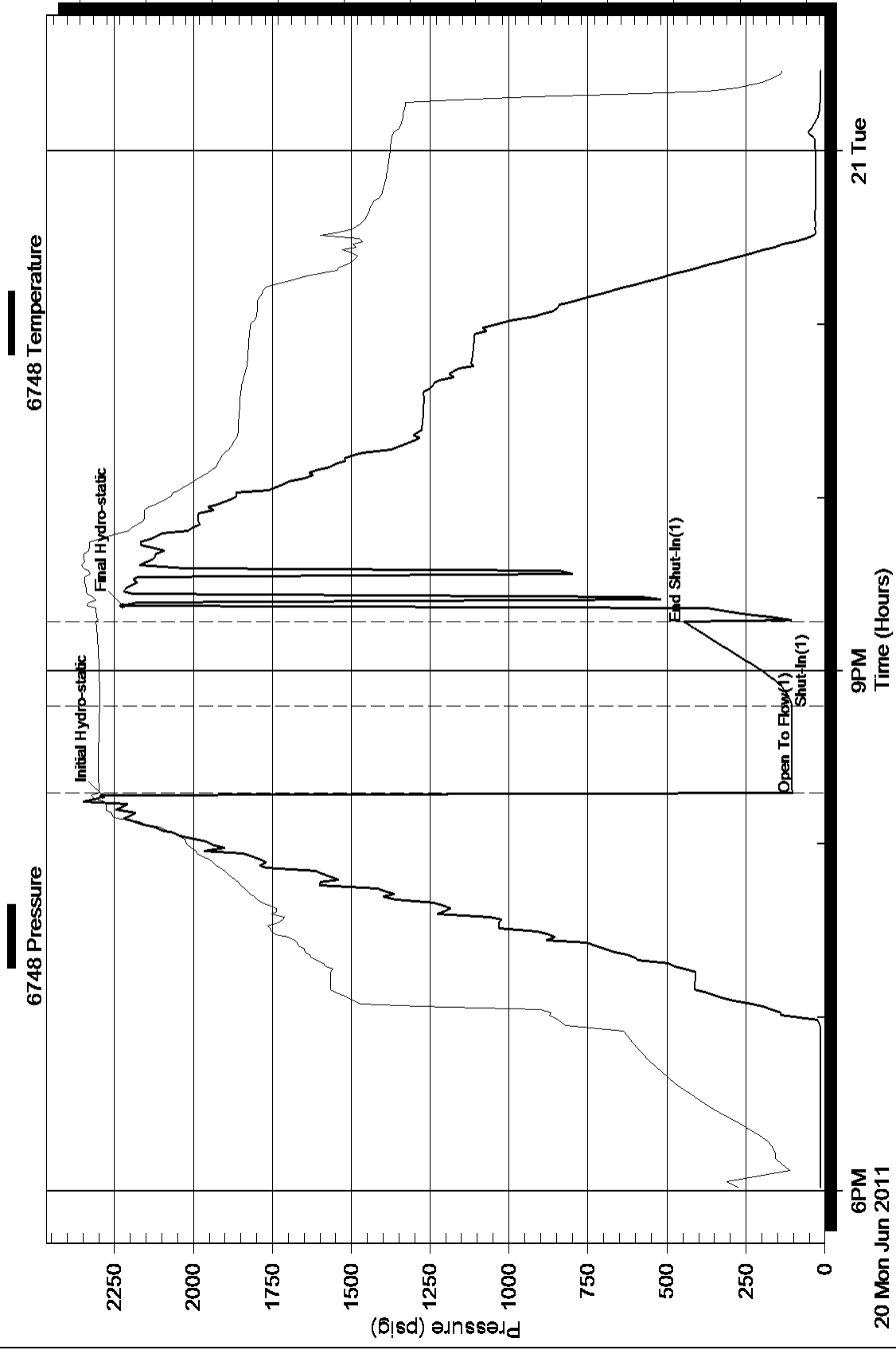
Total Length: 10.00 ft Total Volume: 0.049 bbl

Num Fluid Samples: 0 Num Gas Bombs: 0 Serial #:

Laboratory Name: Laboratory Location:

Recovery Comments: Circulating Sub Yes

Pressure vs. Time



Serial #: 6749

Inside

Grand Mesa Operating

4/16S/33W/Scott

DST Test Number: 6

Pressure vs. Time

